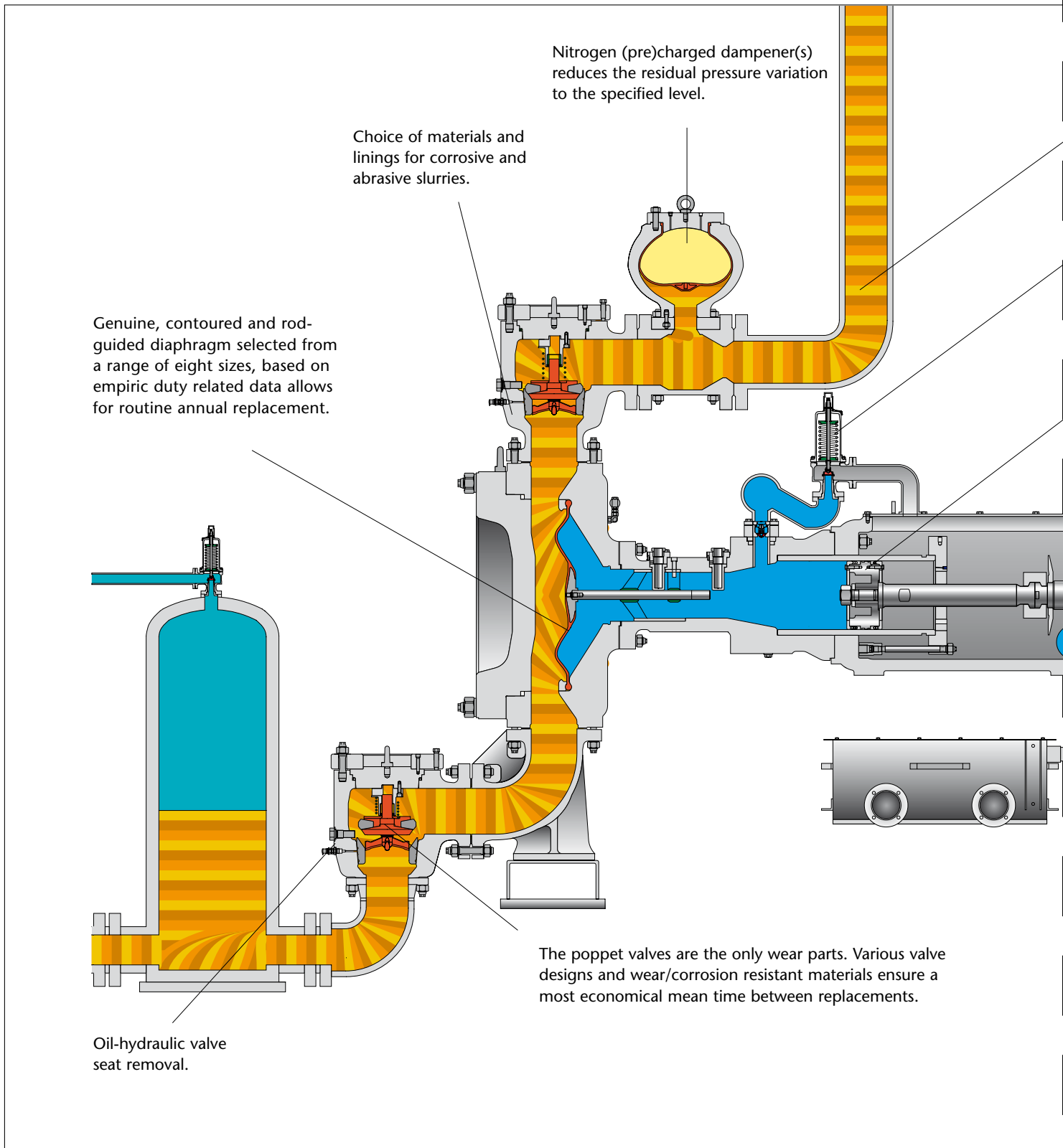


Key features of the GEHO crankshaft driven piston diaphragm slurry pump



## Key features of the GEHO crankshaft driven piston diaphragm slurry pump



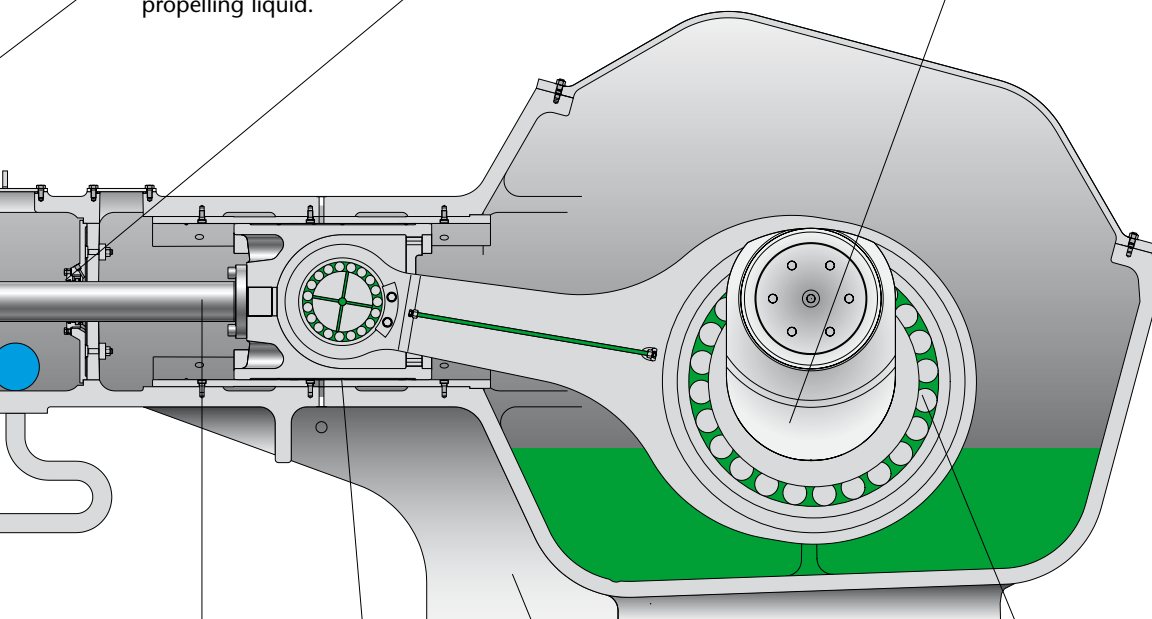
Typical 98% availability,  
up to 96% efficiency.

Single over-pressure  
relief valve protects all  
diaphragm chambers.

Guided low velocity  
piston running in clean  
propelling liquid.

Sealed against exterior  
contamination.

Forged alloy-steel crank-  
shaft driven from external  
gear reducer.



Conservative rod  
load rating.

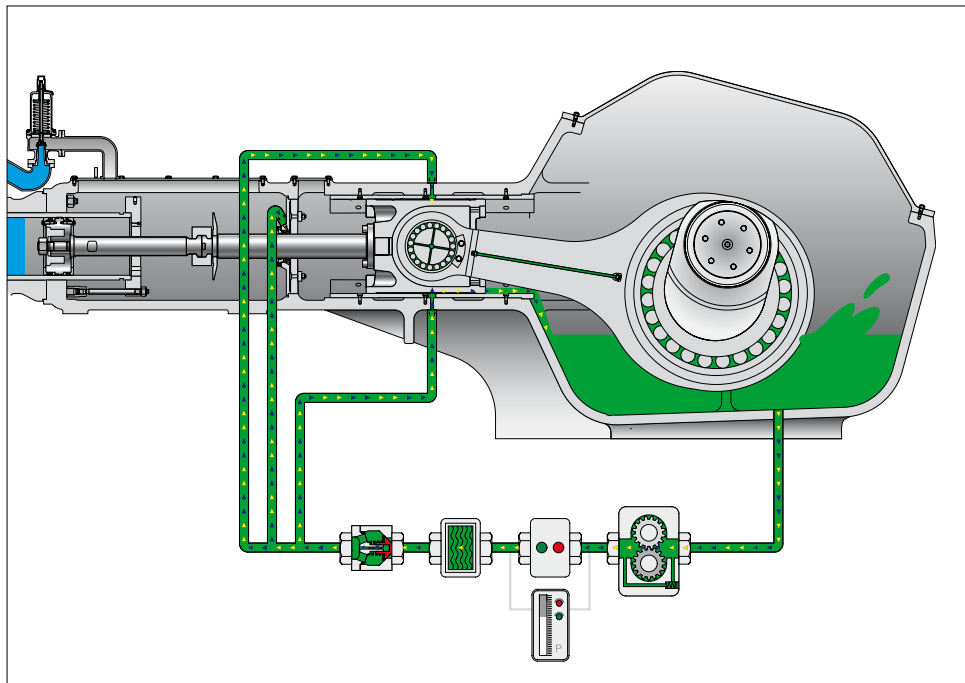
Pre-loaded, long-life roller  
bearings enable rated  
pressure at low speed.

Replaceable  
cross-head guides

Resilient, robust cast  
frame, shaped for low  
stress throughout.



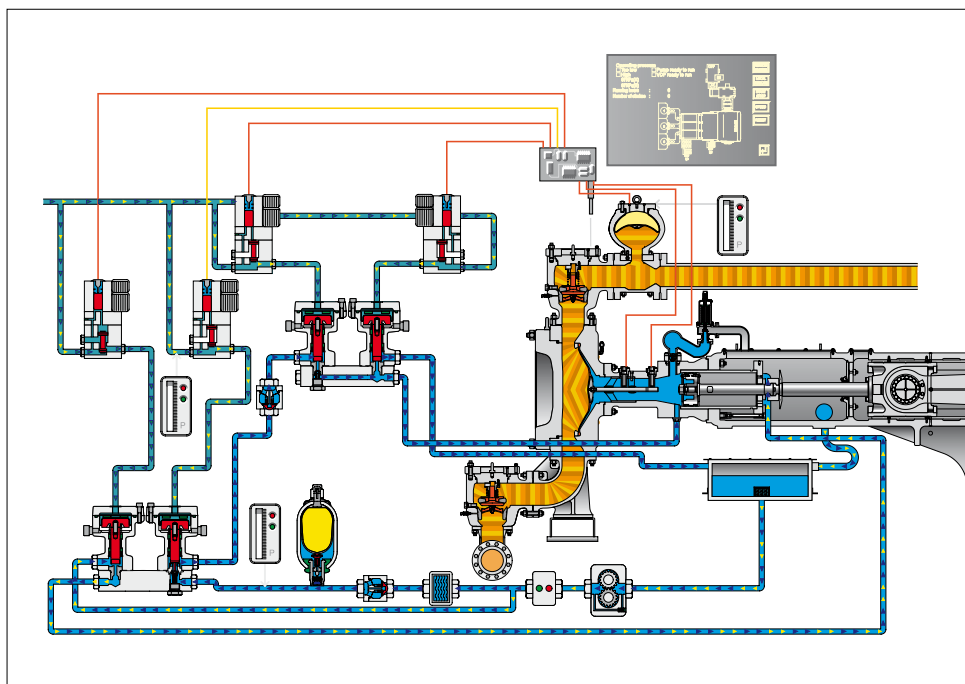
Integral forced-feed lubrication.



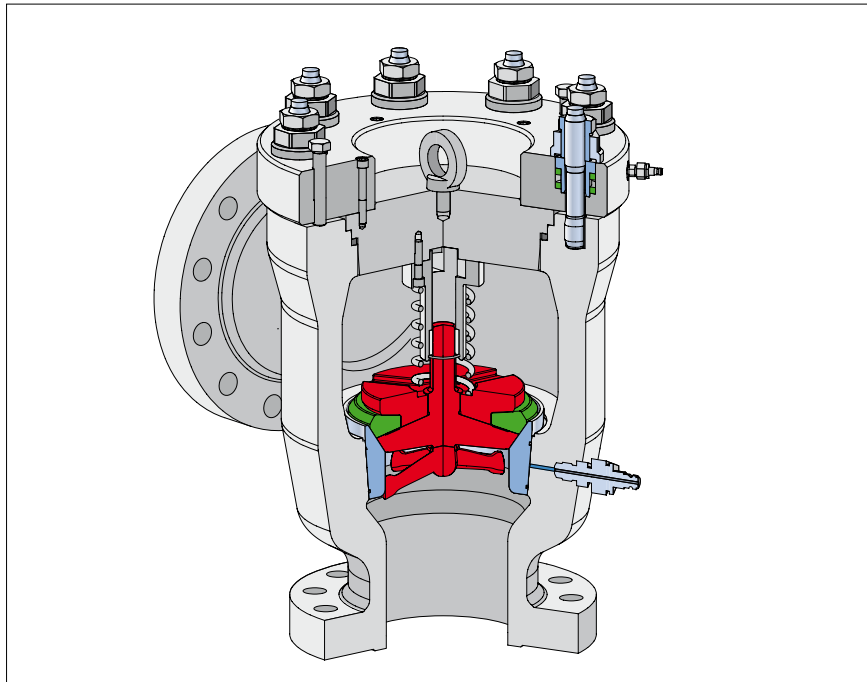
Diaphragm position is controlled in either direction by an integral PLC controlled system adding or removing propelling liquid.

Supervisory control panel PLC for all logic, sequencing and alarm raising functions.

Interactive touch panel for operator convenience.

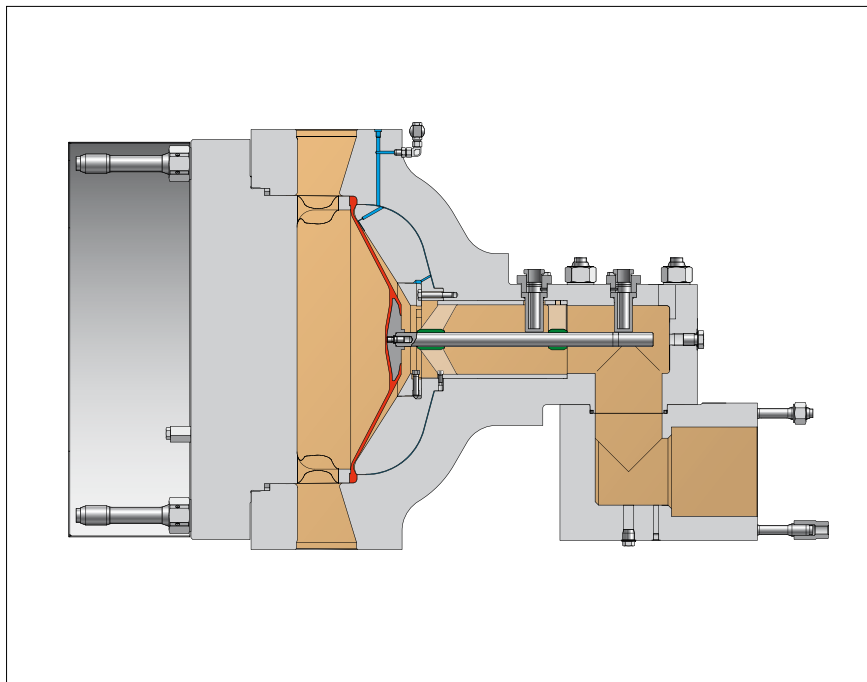


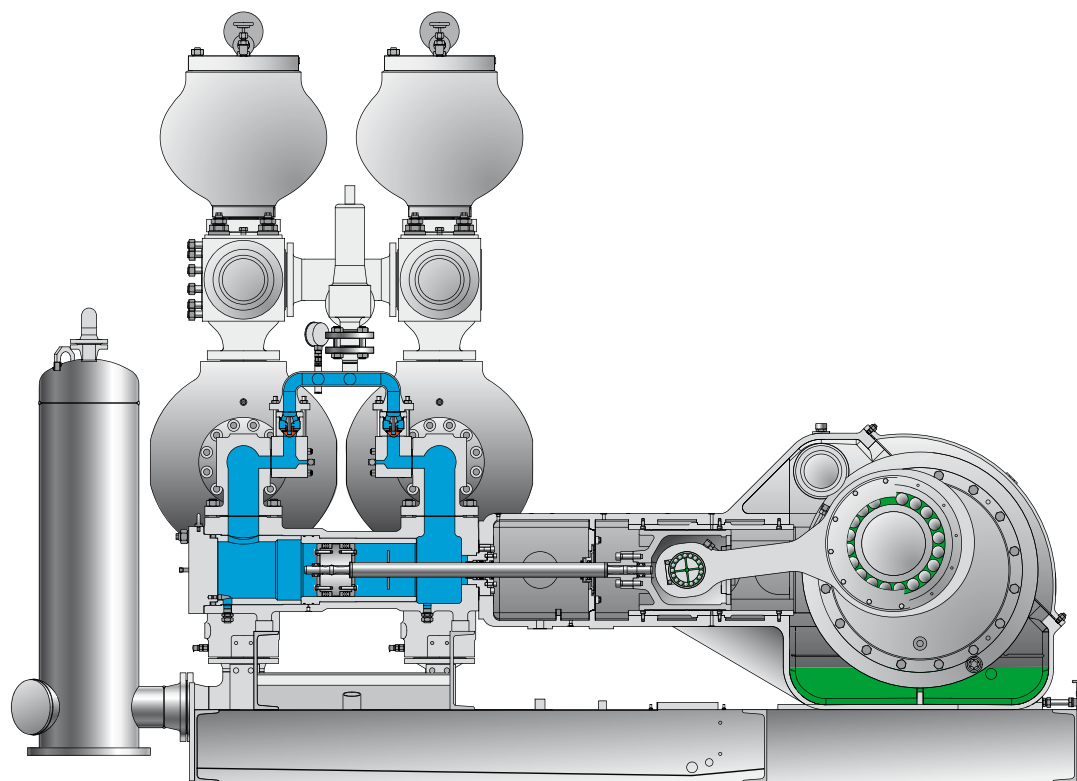
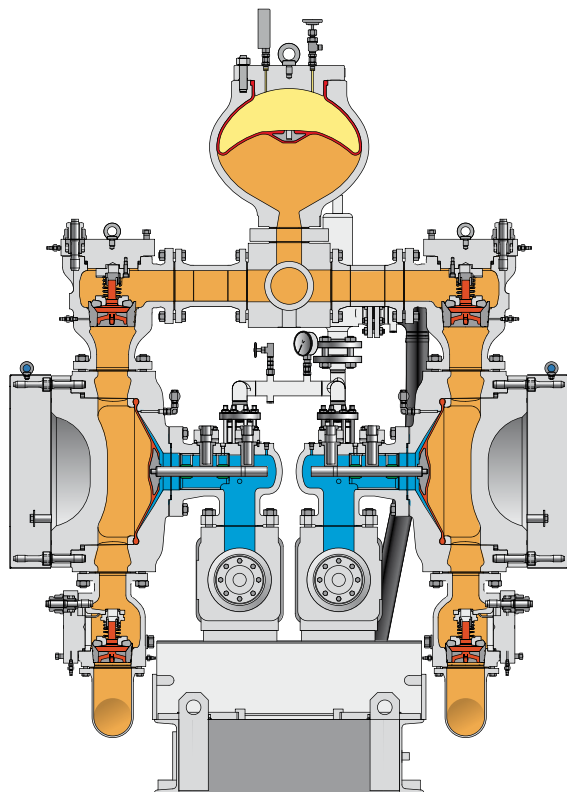
Oil-hydraulic stud tensioning enables rapid valve replacement.



High-pressure diaphragm housing minimizes stress in clamping rim area.

Oil-hydraulic stud tensioning eliminates inaccuracies and stress from torquing.





Complete range single and double-acting pumps (shown above), modular design with wide variety of matching units.

**Weir Minerals Netherlands b.v.**

P.O. Box 249, 5900 AE Venlo, the Netherlands  
 Egtenrayseweg 9, NL-5928 PH Venlo  
 4495  
 Registration No.: 12032525

Tel: +31 (0)77 389 52 00  
 Fax: +31 (0)77 382 48 44  
 Email: [weir@weirminerals.com](mailto:weir@weirminerals.com)  
[www.weirminerals.com](http://www.weirminerals.com)

Excellent  
 Minerals  
 Solutions

