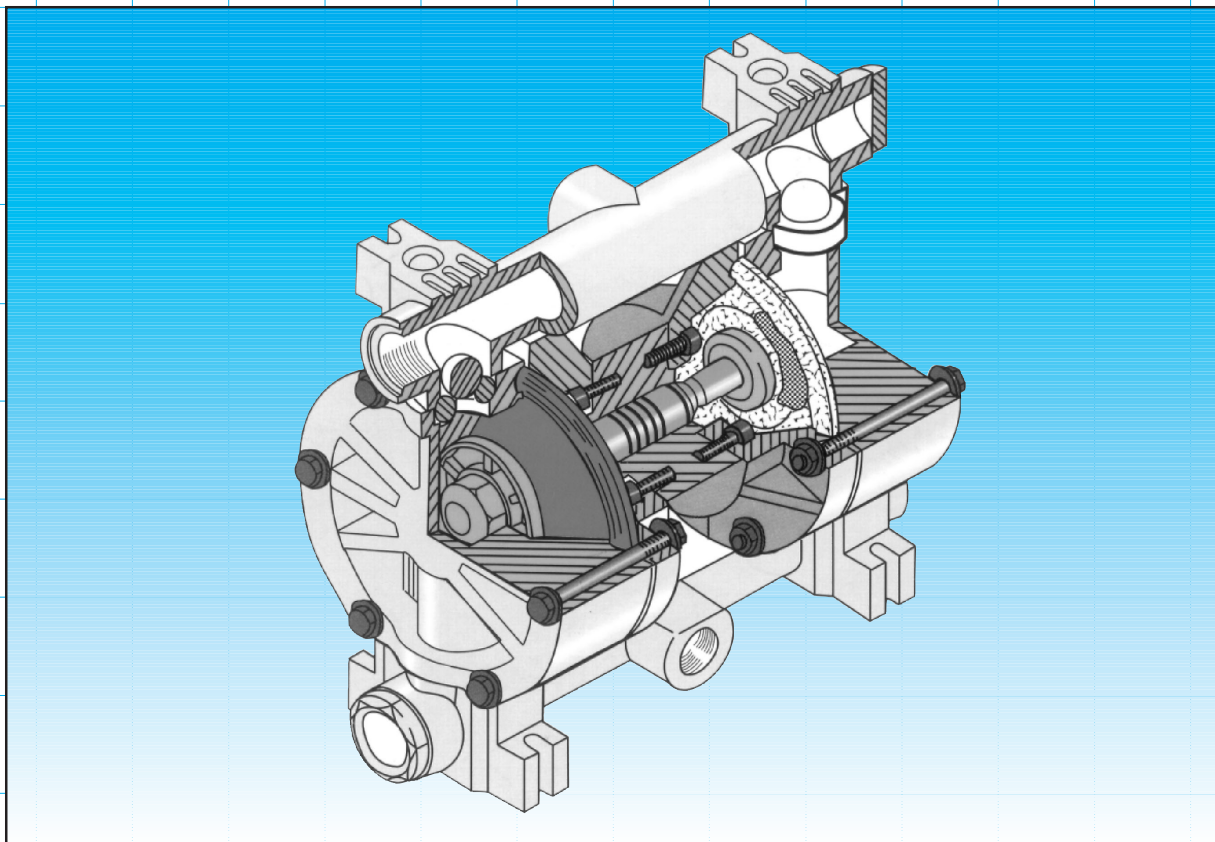


Air operated, double diaphragm pumps **Pompe pneumatiche a doppia membrana**



Applications: CHEMICALS - ELECTRONICS - FOOD
ELECTROPLATING - TEXTILE - ENVIROMENTAL
GRAPHICS - TANNING - CERAMICS - PAINTS.

GemmeCotti AOD Pumps are:

Desined to pump liquids with viscosity from 1 to 3000
cps.

Suitable to pump acids, basis in accordance
with the construction materials: PP, PVDF, ECTFE
STAINLESS STEEL. Suitable to pump abrasive liquid.
Can be operated in dangerous atmosphere ATEX.

Applicazioni: CHIMICA - ELETTRONICA - GALVANICA
TESSILE - ALIMENTARE - ECOLOGIA - GRAFICA
CONCIARIA - CERAMICA - VERNICI.

Le Pompe a Membrana GemmeCotti sono:

Adate al pompaggio di fluidi con viscosità da 1 a 3000
cps. Idonee al pompaggio di fluidi aggressivi, come
acidi e basi compatibili coi materiali di costruzione:
PP, PVDF, ECTFE e acciaio INOX.

Indicate per pompare fluidi abrasivi.

Sono impiegabili in aree classificate ATEX.

Via Alessandro Volta, 85/A - 20020 Ceriano Laghetto (MI) ITALY EU

tel. +39 02 964.60.406

www.gemmecotti.com

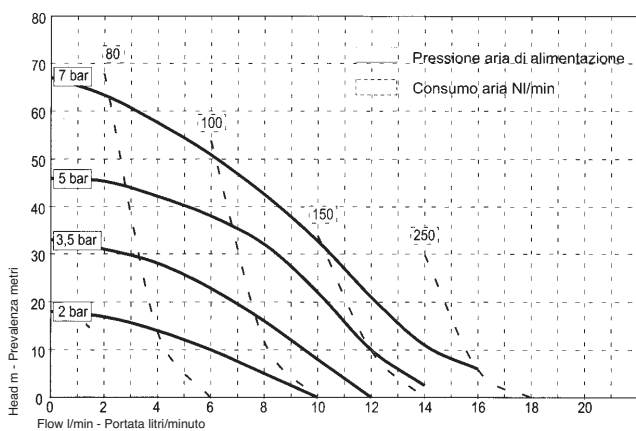
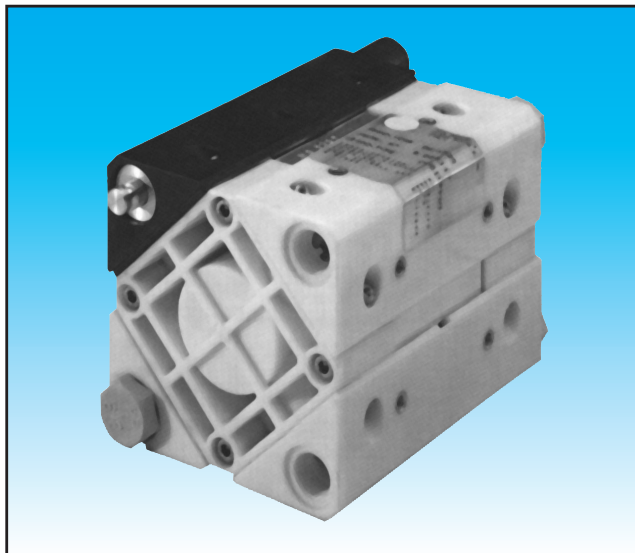


fax +39 02 964.69.114

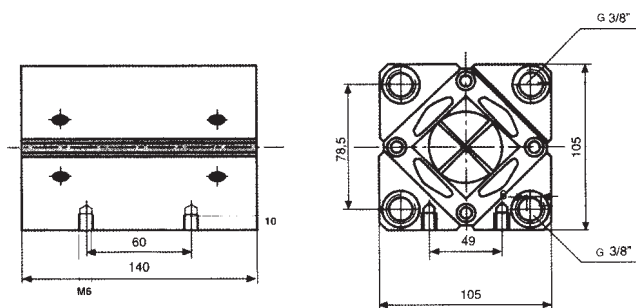
info@gemmecotti.com

HAOD 16

Air operated double diaphragm pumps
Pompe pneumatiche a doppia membrana

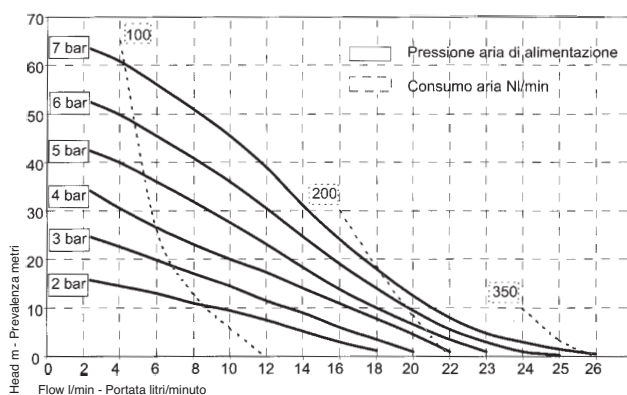
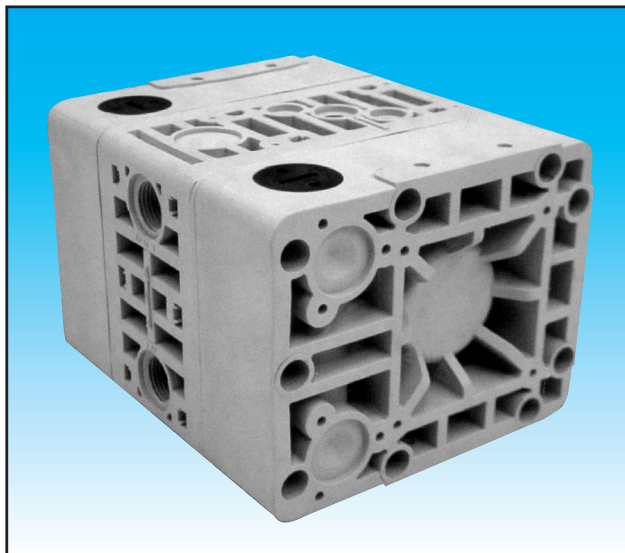


<i>Air inlet</i> - attacco aria:	G 3/8"
<i>Max pressure</i> - pressione max:	7 bar
<i>Max temp.</i> - temp.max	PP : 60°C
“ “	ECTFE: 80°C
<i>Max Ø of solids</i> - max Ø solidi:	0,5 mm
<i>Net weight</i> - peso netto	PP: Kg 1
“ “	ECTFE: Kg 1,5
<i>Noisiness</i> - Rumorosità: Max 70 dB (A) 7 bar	

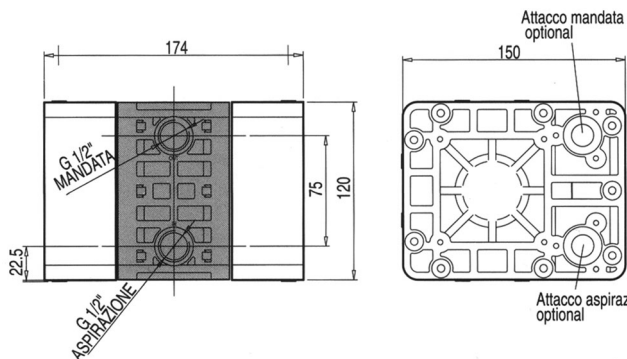


HAOD 25

Air operated double diaphragm pumps
Pompe pneumatiche a doppia membrana

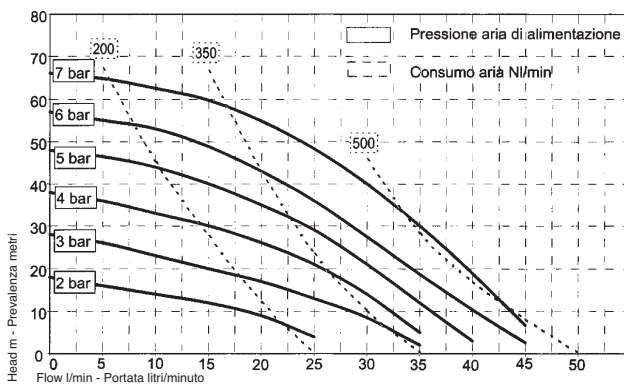


<i>Air inlet</i> - attacco aria:	G 1/2"
<i>Max pressure</i> - pressione max:	7 bar
<i>Max temp.</i> - temp.max	PP : 60°C
“ “	ECTFE: 80°C
<i>Max Ø of solids</i> - max Ø solidi:	2 mm
<i>Net weight</i> - peso netto	PP: Kg 2,6
“ “	ECTFE: Kg 3,5
<i>Noisiness</i> - Rumorosità: Max 70 dB (A) 7 bar	

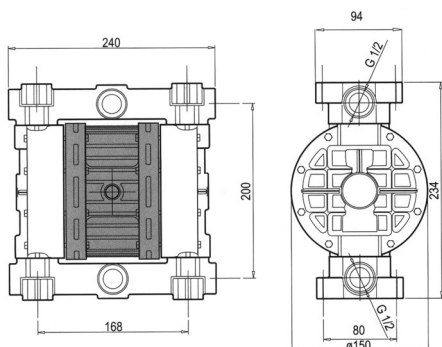


HAOD 50

Air operated double diaphragm pumps
Pompe pneumatiche a doppia membrana

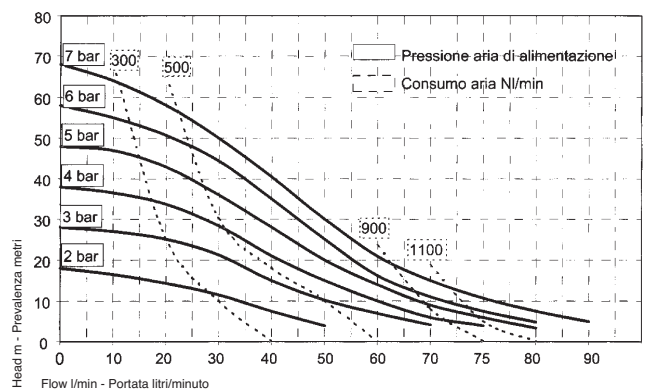
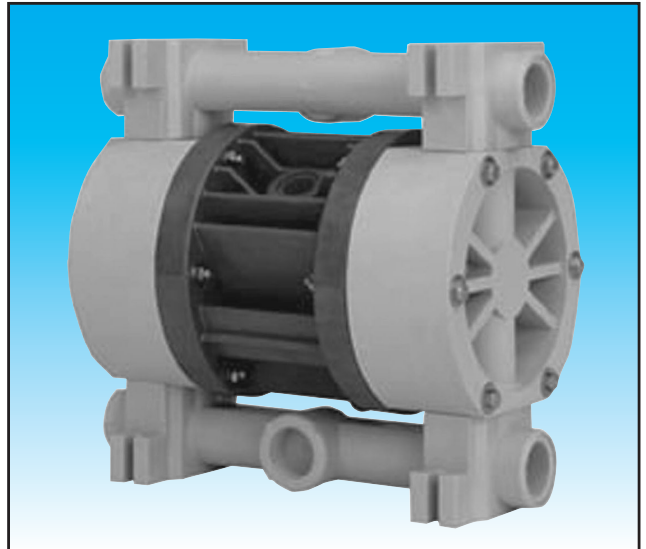


Air inlet - attacco aria:	G 1/2"
Max pressure - pressione max:	7 bar
Max temp. - temp.max	PP : 60°C
" "	ECTFE: 80°C
" "	Alluminio 80°C
Max Ø of solids - max Ø solidi:	3 mm
Net weight - peso netto	PP: Kg 3,6
" "	ECTFE: Kg 4,2
" "	Alluminio Kg 6,5
Noisiness - Rumorosità: Max 78 dB (A) 7 bar	

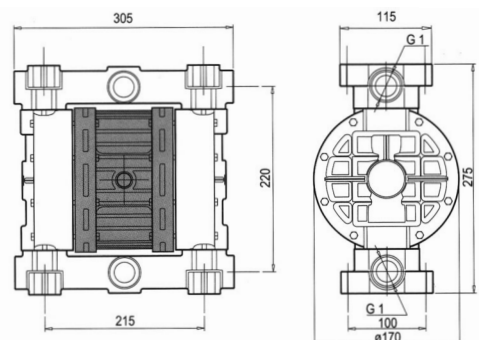


HAOD 90

Air operated double diaphragm pumps
Pompe pneumatiche a doppia membrana



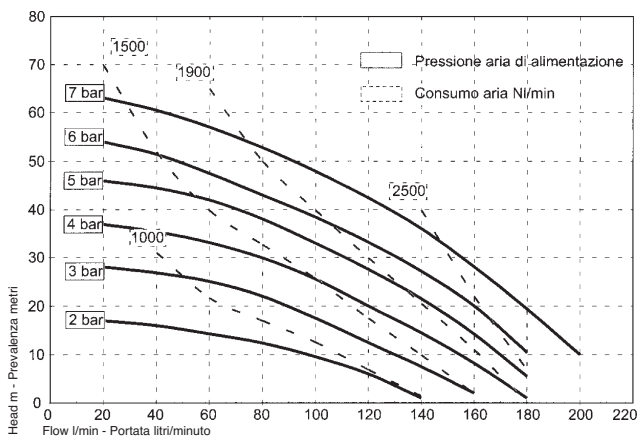
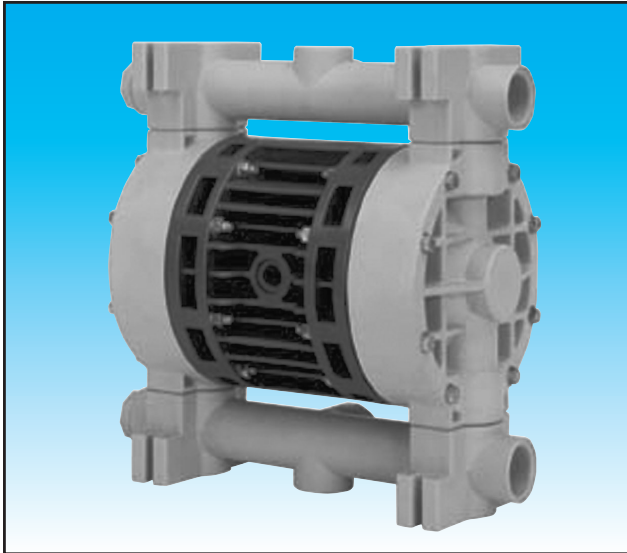
Air inlet - attacco aria:	G 1/2"
Max pressure - pressione max:	7 bar
Max temp. - temp.max	PP : 60°C
" "	ECTFE: 80°C
" "	Alluminio 80°C
Max Ø of solids - max Ø solidi:	4 mm
Net weight - peso netto	PP: Kg 5,5
" "	ECTFE: Kg 6
" "	Alluminio Kg 12
Noisiness - Rumorosità: Max 80 dB (A) 7 bar	



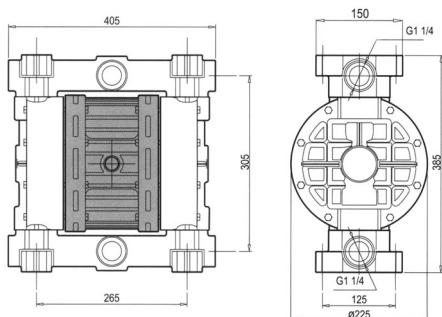
All dates stated are merely an indication and are liable to change without notice.
Tutti i dati indicati nel prospetto sono meramente indicativi e potrebbero subire variazioni senza preavviso.

HAOD 200

Air operated double diaphragm pumps
Pompe pneumatiche a doppia membrana

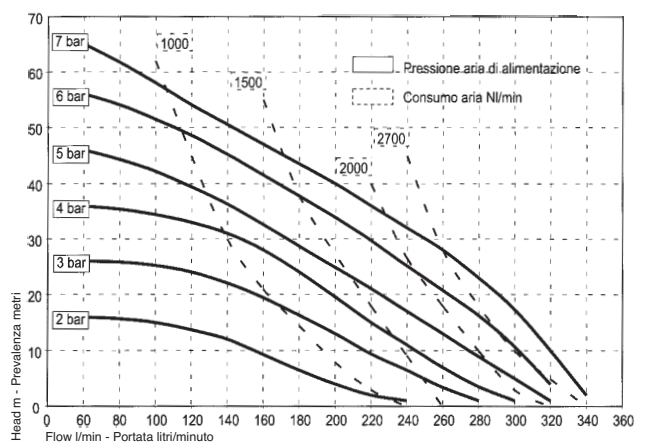
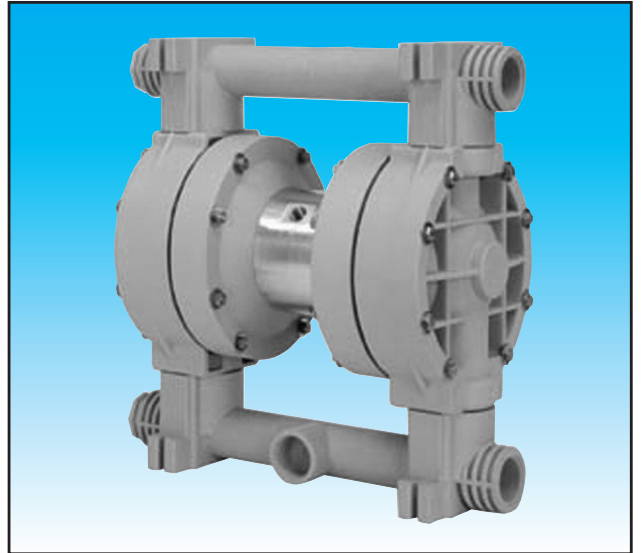


Air inlet - attacco aria:	G 1/2"
Max pressure - pressione max:	7 bar
Max temp. - temp.max	PP : 60°C
" "	ECTFE: 80°C
" "	Alluminio 80°C
Max Ø of solids - max Ø solidi:	4 mm
Net weight - peso netto	PP: Kg 15
" "	ECTFE: Kg 17
" "	Alluminio Kg 19
Noisiness - Rumorosità: Max 80 dB (A) 7 bar	



HAOD 340

Air operated double diaphragm pumps
Pompe pneumatiche a doppia membrana



Air inlet - attacco aria:	G 1/2"
Max pressure - pressione max:	7 bar
Max temp. - temp.max	PP : 60°C
" "	ECTFE: 80°C
" "	Alluminio 80°C
Max Ø of solids - max Ø solidi:	6 mm
Net weight - peso netto	PP: Kg 20
" "	ECTFE: Kg 24
Noisiness - Rumorosità: Max 80 dB (A) 7 bar	

