

MODEL ILLUSTRATED
MUF322

- **GREATLY VERSATILE AND FUNCTIONAL STATE-OF-THE-ART DESIGN** to withstand the most severe environments.
- **DESIGNED TO USE VG32 "ENVIRONMENTALLY SAFE" OIL** - Non-toxic and biodegradable with high-resistance to aging and corrosion, providing long-term "environmentally-responsible" service.



FS SERIES PUMPS

BY MUNRO

MUNRO FS PUMPS COMBINE QUALITY AND VERSATILITY



DESIGNED FOR HIGH HEAD OR HIGH GPM CAPACITY



FOR MORE INFORMATION ABOUT OTHER INNOVATIVE PRODUCTS BY MUNRO, CALL FOR THE DISTRIBUTOR NEAREST YOU

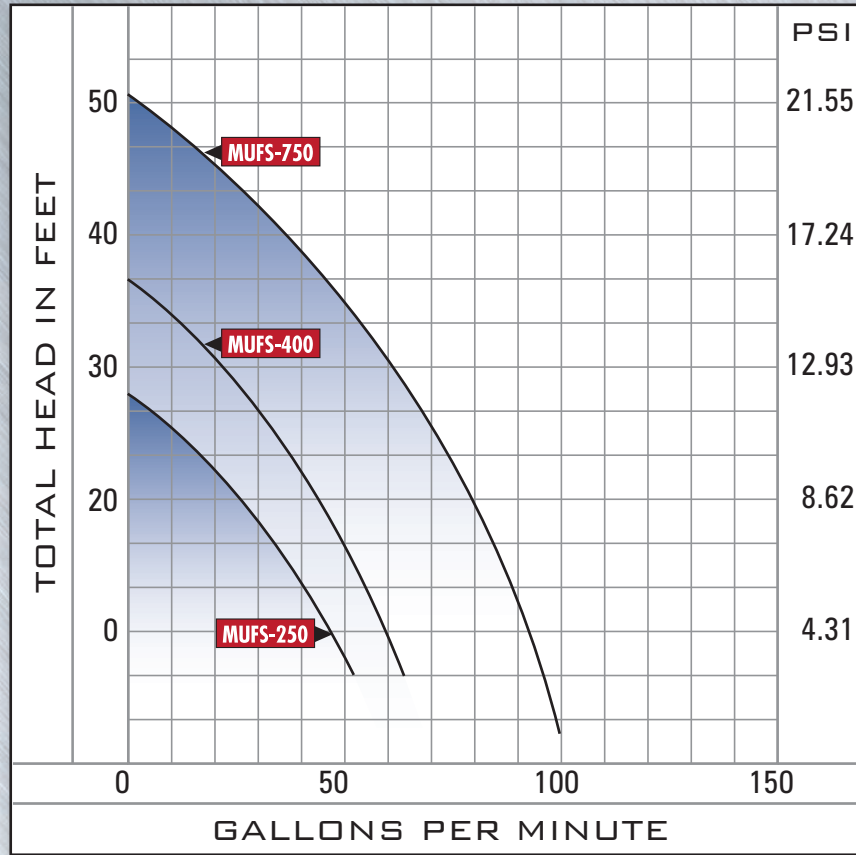
PH: 800.942.4270 • FAX: 970.263.2277

E-MAIL: sales@munropump.com • WEBSITE: www.munropump.com

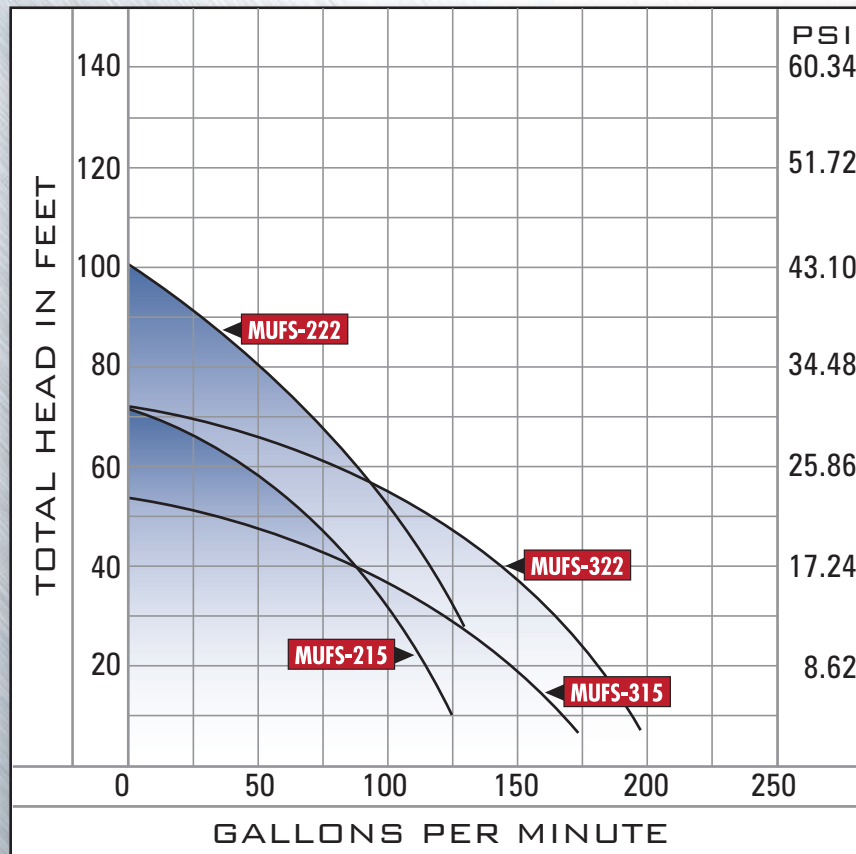
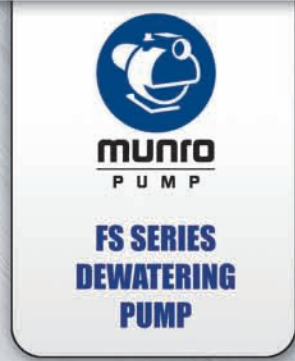
MPI / FS SERIES / REV0807



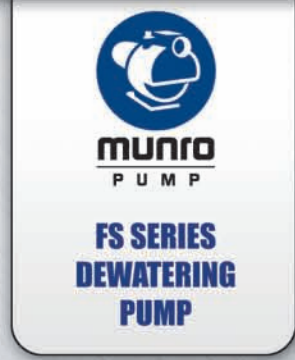
MUNRO PUMP INC.
A MUNRO COMPANY



MODELS FS-250/400/750



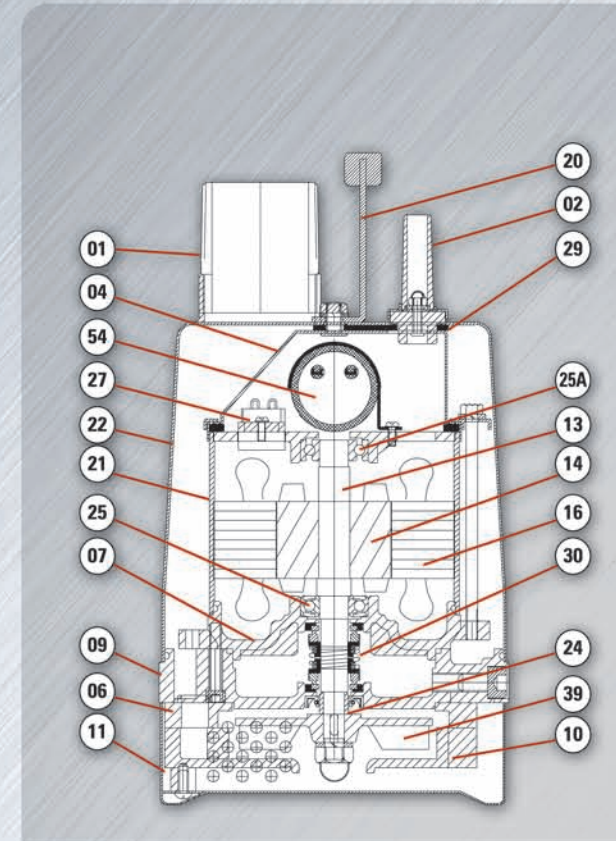
MODELS FS-215/315/222/322



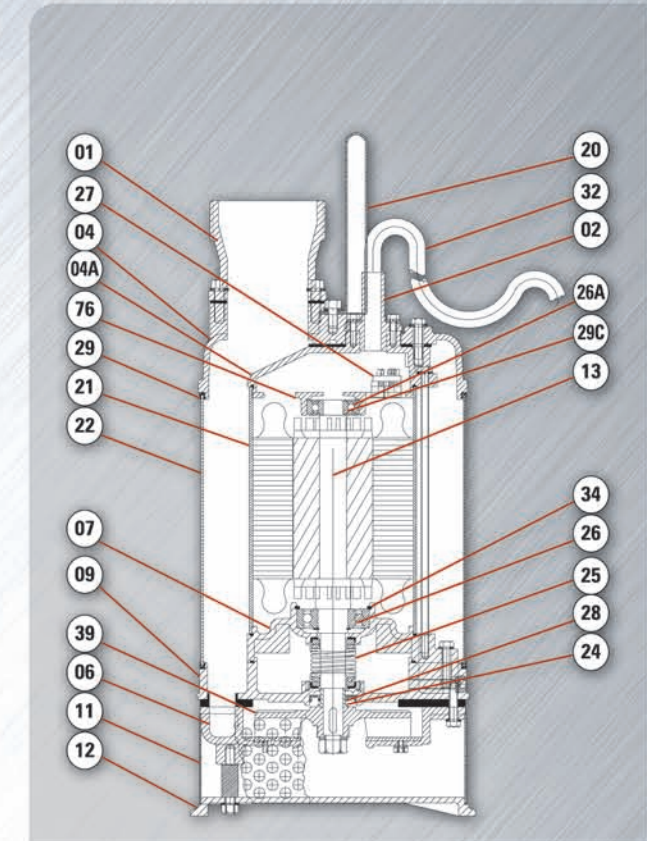
Weight In Lbs.	Solids Handling in Inches	Discharge Size In Inches	Cord Length In Feet	Voltage	Phase	Amps	HP	Part Number
33	.24	1.5	18	110	1	4	1/3	MUFS250S11
32	.24	1.5	18	220	1	2.5	1/3	MUFS250S22
33	.24	2	18	110	1	5.3	1/2	MUFS400S11
33	.24	2	18	220	1	3	1/2	MUFS400S22
40	.32	2	18	110	1	10	1	MUFS750S11
37	.32	2	18	220	1	5	1	MUFS750S22
35	.32	2	18	220	3	4	1	MUFS750T22
35	.32	2	18	440	3	2	1	MUFS750T44
83	.36	2	33	110	1	16	2	MUFS215S11
81	.36	2	33	220	1	9	2	MUFS215S22
70	.36	2	33	220	3	6.8	2	MUFS215T22
60	.36	2	33	440	3	3.5	2	MUFS215T44
83	.36	3	33	110	1	17	2	MUFS315S11
81	.36	3	33	220	1	8	2	MUFS315S22
59	.36	3	33	220	3	6.8	2	MUFS315T22
78	.36	3	33	440	3	3.5	2	MUFS315T44
88	.36	2	33	220	3	10.5	3	MUFS222T22
68	.36	2	33	440	3	5.5	3	MUFS222T44
68	.36	3	33	220	3	11	3	MUFS322T22
69	.36	3	33	440	3	5.5	3	MUFS322T44
142	.4	2	33	220	3	14.5	5	MUFS237T22
122	.4	2	33	440	3	8	5	MUFS237T44
143	.4	3	33	220	3	14	5	MUFS337T22
135	.4	3	33	440	3	8	5	MUFS337T44
145	.4	4	33	220	3	14	5	MUFS437T22
144	.4	4	33	440	3	8	5	MUFS437T44
158	.4	3	33	220	3	20	7.5	MUFS355T22
148	.4	3	33	440	3	11	7.5	MUFS355T44
133	.4	4	33	220	3	20	7.5	MUFS455T22
148	.4	4	33	440	3	11	7.5	MUFS455T44
300	.6	4	33	220	3	30	10	MUFS475T22
300	.6	4	33	440	3	16	10	MUFS475T44
300	.6	6	33	220	3	30	10	MUFS675T22
300	.6	6	33	440	3	16	10	MUFS675T44
305	.6	4	33	220	3	35	15	MUFS411T22
307	.6	4	33	440	3	18	15	MUFS411T44
310	.6	6	33	220	3	35	15	MUFS611T22
311	.6	6	33	440	3	18	15	MUFS611T44

Reference Number	Part Description	MODEL NUMBERS		
		FS250/400/750	FS-215/222/315/322 FS-237/337/355/437/455	FS-475/675 FS-411/611
01	Discharge Flange	Cast Iron 200	Cast Iron 200	Cast Iron 200
02	Cable Gland	Fiber Plastic	NBR	NBR
04	Upper Cover	SUS304	SUS304	SUS304
04A	Motor Cover		Cast Iron 200	Cast Iron 200
06	Pump Casing	Cast Iron 200	Ductile Iron 50	Ductile Iron 50
07	Bearing Block		Cast Iron 200	Cast Iron 200
09	Seal Block		Cast Iron 200	Cast Iron 200
10	Inlet Plate	Cast Iron 200	Cast Iron 200	Cast Iron 200
11	Strainer	SUS304	SUS304	SUS304
12	Bottom Plate		Ductile Iron 50	Ductile Iron 50
13	Shaft	SUS410	SUS410	SUS410
14	Rotor	Silicon Steel	Silicon Steel	Silicon Steel
16	Stator	Silicon Steel	Silicon Steel	Silicon Steel
20	Handle/Hanger	Steel	Steel	Steel
21	Motor Frame	SUS304	Cast Iron 250	Cast Iron 250
22	Outer Case	SUS304	SUS304	SUS304
24	Shaft Sleeve	SUS304	SUS410	SUS410
25-25A	Bearing			
27	Protector			
28	O'Ring	NBR	NBR	NBR
29	Gasket	NBR	NBR	NBR
30	Mechanical Seal	CE/CA+SIC/SIC	CE/CA+SIC/SIC	CE/CA+SIC/SIC
32	Cable			
34	C'Ring		SC40	SC40
39	Impeller	Ductile Iron 45	High Chrome Steel	High Chrome Steel
54	Capacitor			
60	Flange	ABS		
76	Bearing Block	Cast Iron 200	Cast Iron 200	Cast Iron 200
90	Rubber Liner	NBR	NBR	

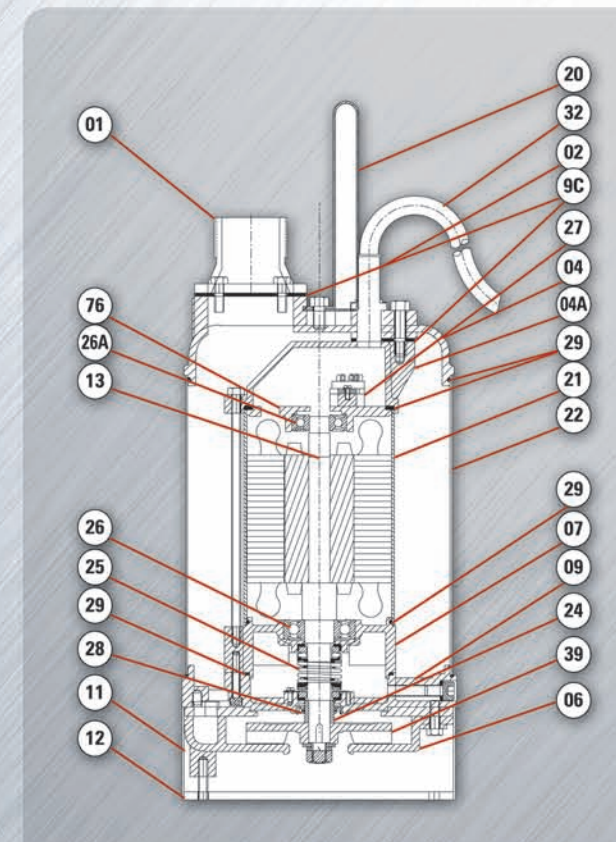
MODELS FS-250/400/400/750



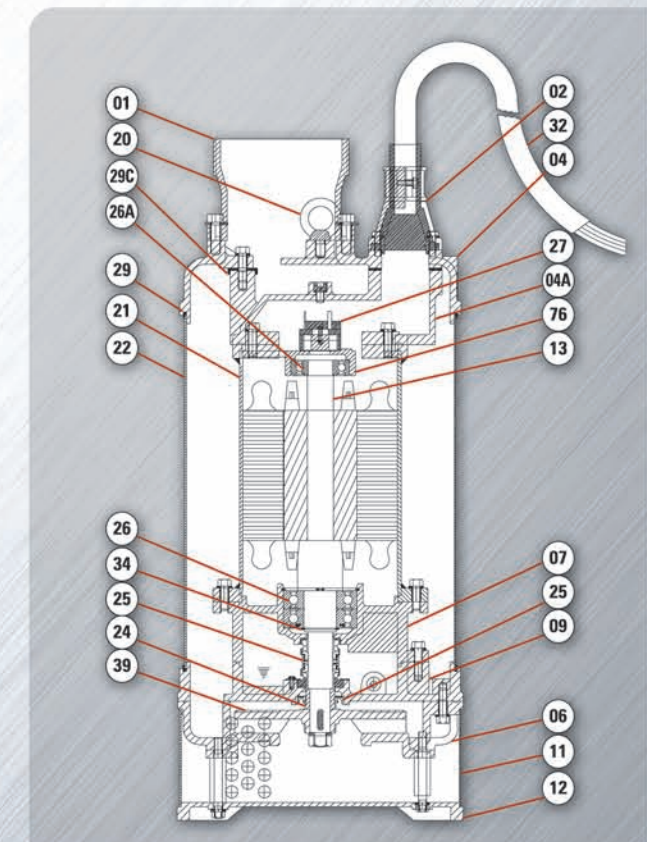
MODELS FS-237/337/437/355/455



MODELS FS-215/315/222/322



MODELS FS-475/675/411/611

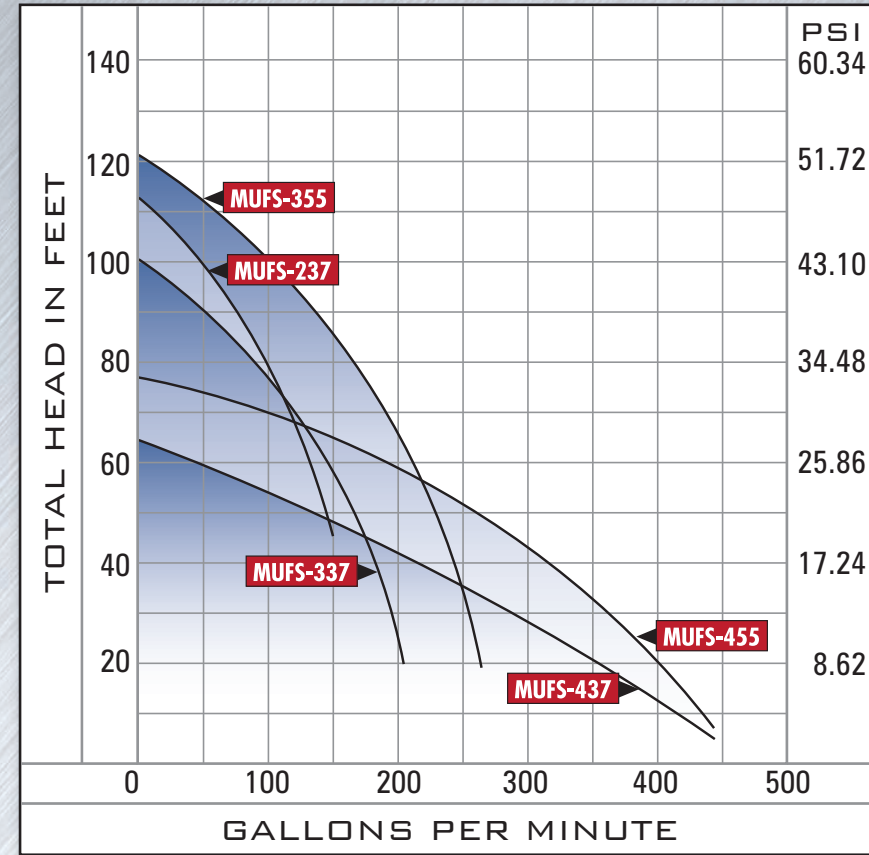
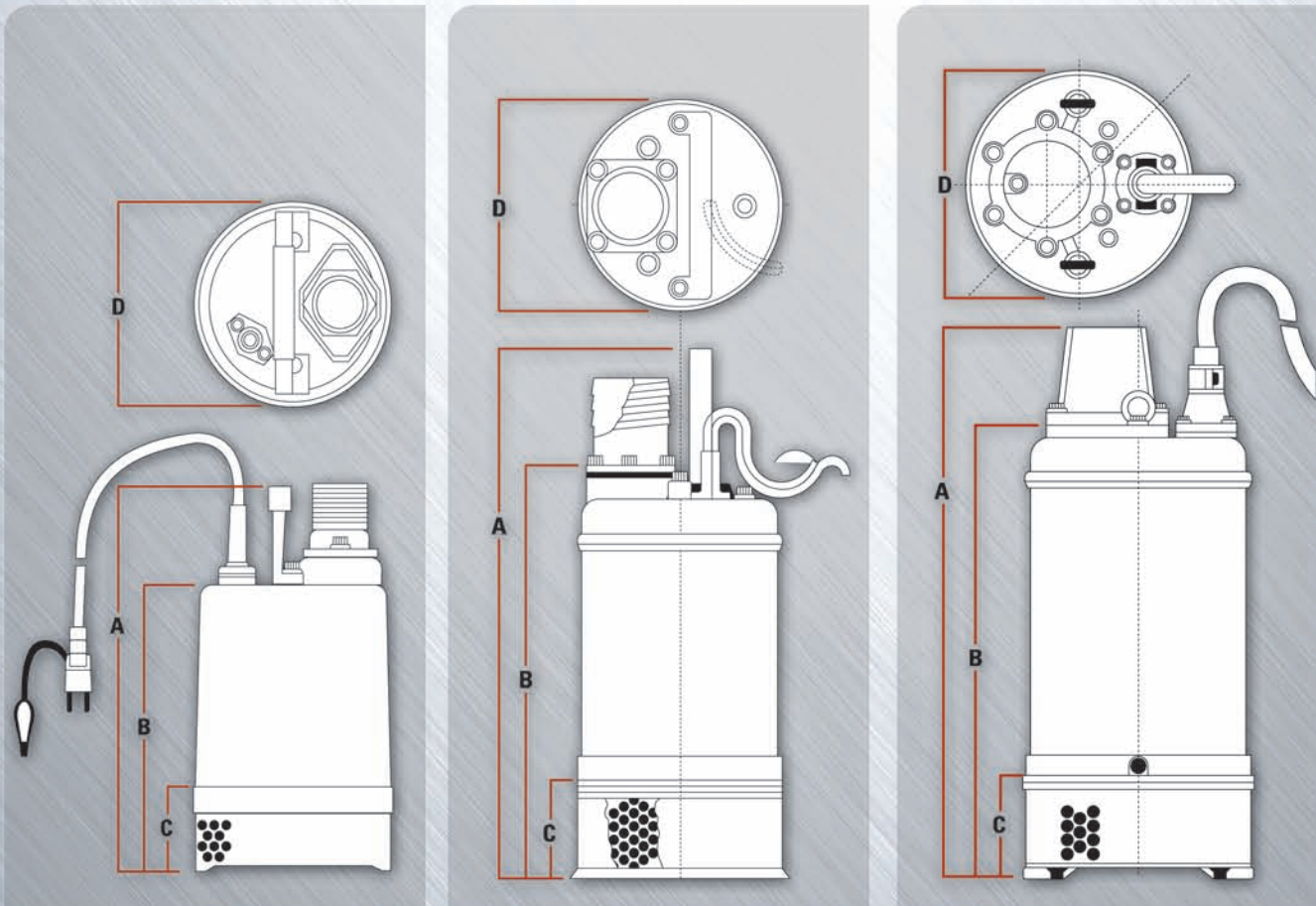


Type	A in Inches	B in Inches	C in Inches	D in Inches
FS-250/400	13.4	10	3	7.1
FS-750	14.6	11.2	3	7.1
FS-215/315	22	16	2.8	8.5
FS-222/322	22	16	2.8	8.5
FS-237/337/437	25.2	19.6	4.7	11.2
FS-355/455	26.4	20.6	4.7	11.2
FS-475/675	33.2	27.4	6.9	13.8
FS-411/611	33.2	27.4	6.9	13.8

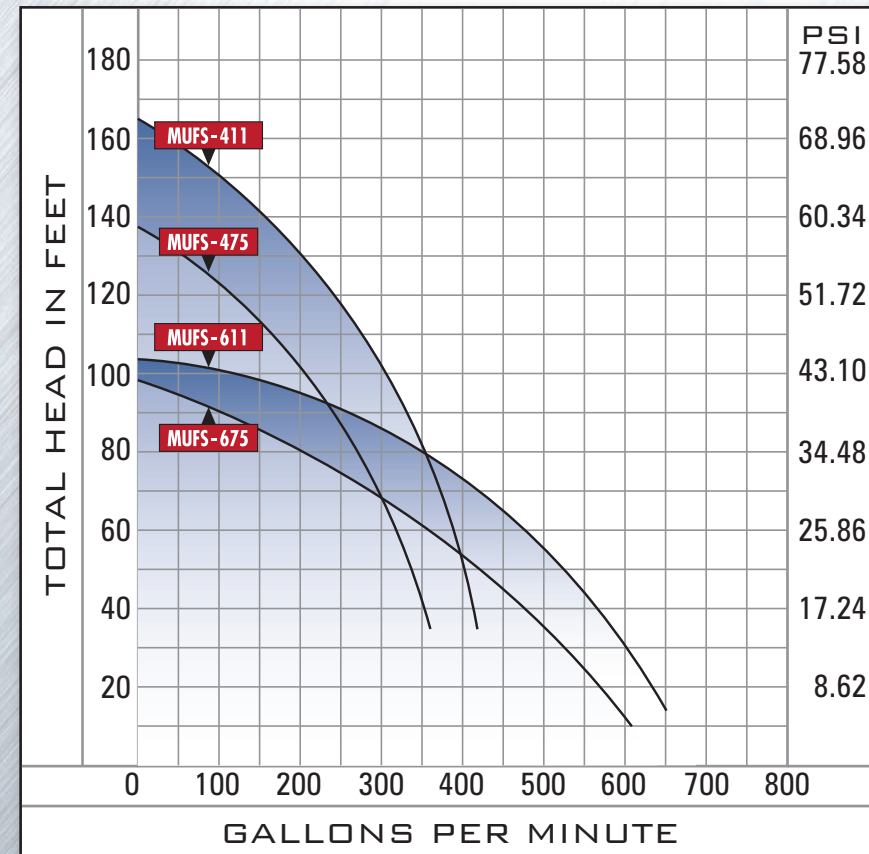
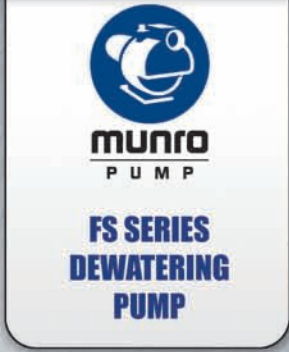
MODELS FS-250/400/750

MODELS FS-215/222/237/315
322/337/355/437/455

MODELS FS-475/675/411/611



MODELS FS-237/337/437/355/455



MODELS FS-475/675/411/611

