

# S50HT SERIES

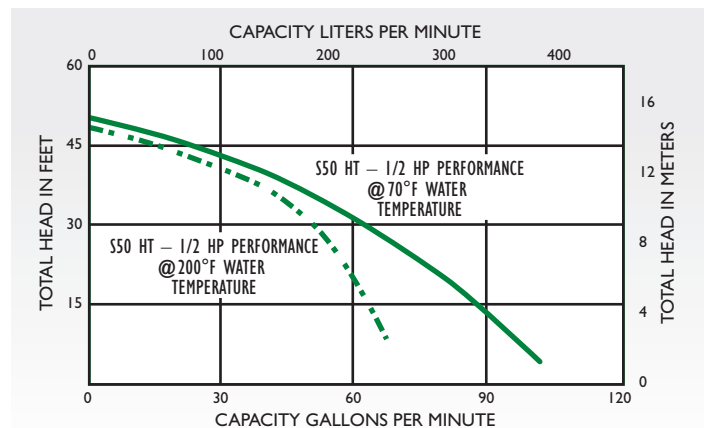
## 1/2 HP High Capacity Submersible Sump Pump

### SPECIFICATIONS

Applications	High-Capacity Sump, Effluent, Boiler Blow-down	
Capacities	100 GPM	378 LPM
Shut-off Head	50'	15.2 m
Max. Spherical Solids	3/4"	19 mm
Liquids Handling	domestic effluent and drain water	
Max. Liquid Temp.	200°F	93°C
Motor Electrical Data	1/2 HP, 3450 RPM, PSC with thermal overload, 115V, 12 FLA, 1Ø, 60Hz	
Acceptable pH Range	5–9	
Specific Gravity	.9–1.1	
Viscosity	28–35 SSU	
Discharge, NPT	2"	50.8 mm
Housing	cast iron	
Minimum Sump Diameter		
Simplex:	24"	61 cm
Duplex:	36"	91.4 cm
Power Cord	20', 16/4, SOOW, SOOW-A	



PW217-280  
Control Panel  
Required  
(sold separately)



### FEATURES

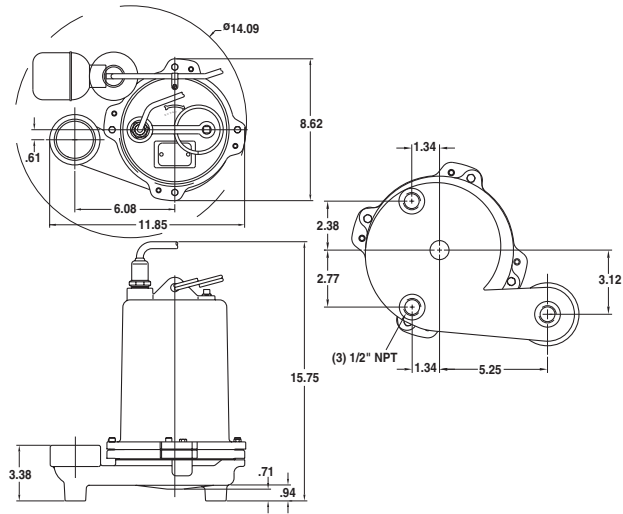
- 1/2 HP
- Class 30 cast iron construction
- 2" (50.8 mm) NPT discharge
- Dual silicon carbide shaft seals
- Oil-filled motor with automatic reset overload provides safe operation
- Ball-bearing construction for long life
- 600V jacketed lead for added durability
- Easily replaceable power cord with optional lengths available



# S50HT SERIES

1/2 HP High Capacity Submersible Sump Pump

OUTLINE DIMENSIONS



Dimensions (in inches) are for estimating purposes only.

SECTIONAL VIEW

