

**Two-Stage
Centrifugal
Pumps**



**Construction
Available**

- All Iron
- Bronze Fitted



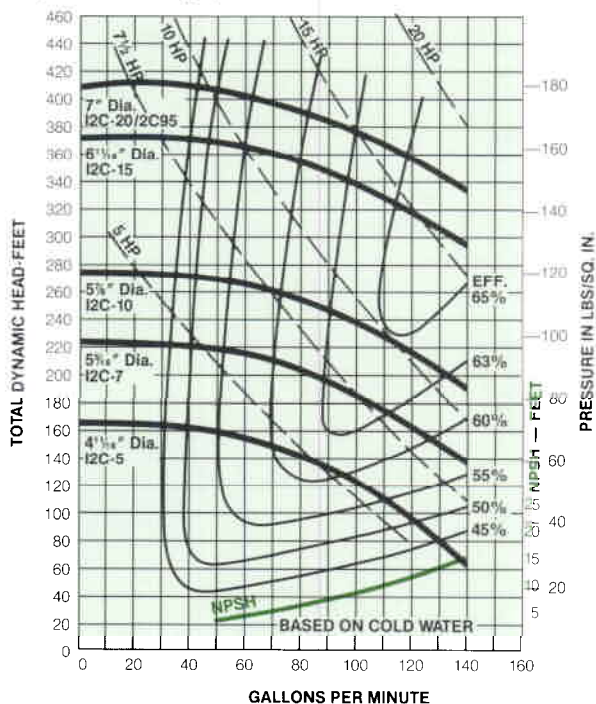
Myers Two-Stage Centrifugal Pumps: Rugged and Versatile



Performance Curves

12C and 12CI Two-Stage Centrifugals

1 1/2" Discharge, 2" Suction Motor Driven—3450 RPM



Myers 12C and 12CI Two-Stage Centrifugal pumps are designed and built for rugged continuous duty service. This general service pump can be found in a wide variety of applications. Over the years, Myers multistage centrifugals have earned a reputation for dependable performance and quality workmanship, delivering maximum performance with smooth, quiet operation.

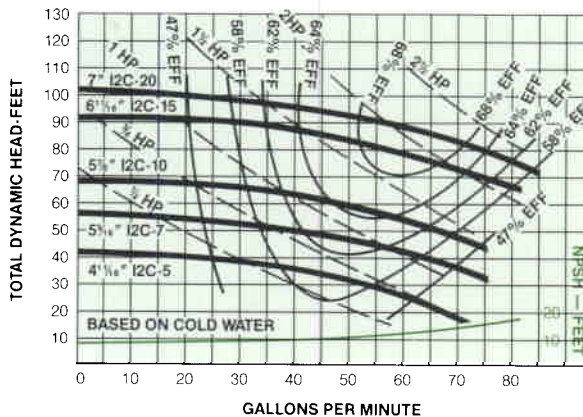
They are 230/460 volt, open drip proof, general purpose type. For special motors, please consult the factory.

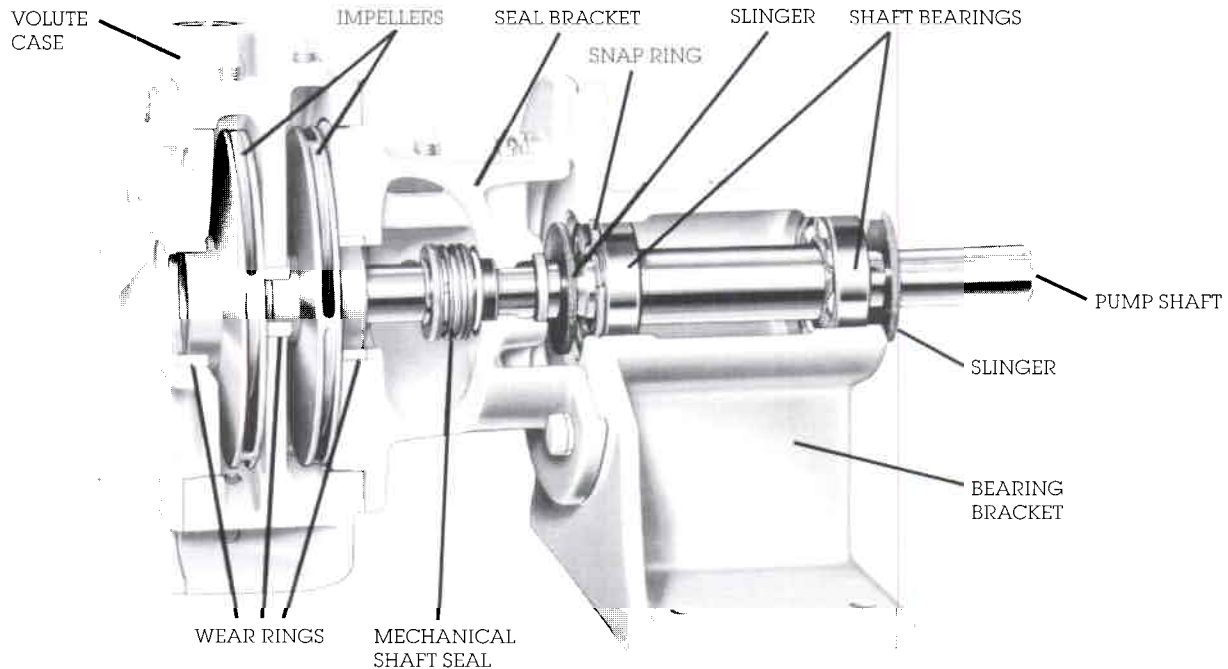
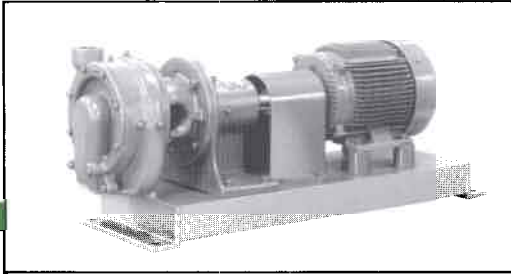
Applications

- Booster service
- Irrigation
- Cold and hot water circulation
- Fluid transfer
- Boiler feed
- Car wash installations
- Water reclamation
- Water supply
- Golf course sprinkling
- General industrial and commercial applications
- Jobs requiring pumping clear or non-corrosive liquids.

These high head (to 400 feet) medium capacity (to 140 GPM) pumps are available in standard fitted (12C) and all iron (12CI) construction. The 12C and 12CI have threaded 2" suction and 1 1/2" discharge ports. All frame mounted motor driven units are standard with 3450 RPM, 60 hertz, three phase motors in 5 to 20 horsepower sizes.

1750 RPM





Construction Materials

VOLUTE CASE

High tensile gray iron casting with wear rings. Threaded discharge tapping rotates to 8 positions.

SEAL BRACKET

High tensile gray iron casting with threaded suction tapping. Seal bracket has oil chamber to lubricate and cool the seal face.

DRAIN PLUGS

Plugs are conveniently located so case can be completely drained in any discharge position.

BEARING BRACKET

Heavy duty bracket provides rigid support for liquid end. Holds shaft bearings in perfect alignment with pump case for quiet operation.

SHAFT BEARINGS

Regreasable heavy duty ball bearings, sealed on outboard side, lubricated at the factory.

IMPELLERS

Dual enclosed impellers are hydraulically and dynamically balanced. Mounted back-to-back for reduced axial thrust, results in vibration free operation and minimum bearing load. I2C has bronze impellers and I2CI has epoxy coated, high tensile gray iron impellers.

WEAR RINGS

Replaceable wear rings and interstage bushings help to eliminate wear of the casting in the impeller hub and ring area. Bronze in I2C, Ni-Resist in I2CI.

MECHANICAL SHAFT SEAL

Located on suction side to provide lower pressure differential and longer seal life and maximum positive inlet pressure of 75 PSI. Standard seal will accommodate 220°F. Please consult factory for special seal applications.

PUMP SHAFT

Manufactured from tough, corrosion resistant 416 stainless steel.

SLINGER

Molded rubber slinger protects bearings from moisture and dirt.

SNAP RING

Carbon steel ring holds bearing/shaft assembly in place, prevents axial movement of the bearings and shaft.

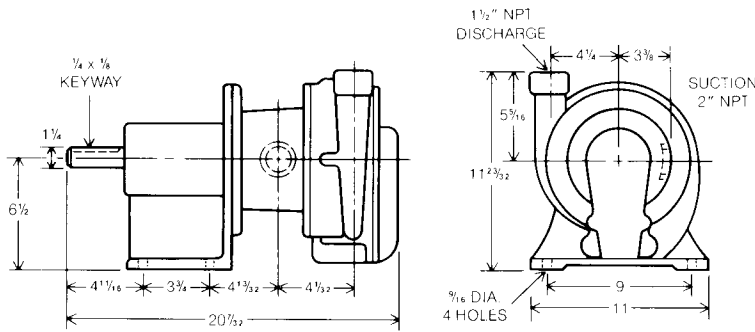
MOTOR (FRAME MOUNTED UNITS)

General purpose, 3450 RPM, open drip proof, 230/460 volt motor is standard. TEFC motors available on request. Frame mounted units use a flexible coupling for easy motor or pump replacement. Mounted on a heavy-duty welded steel base.

Specifications

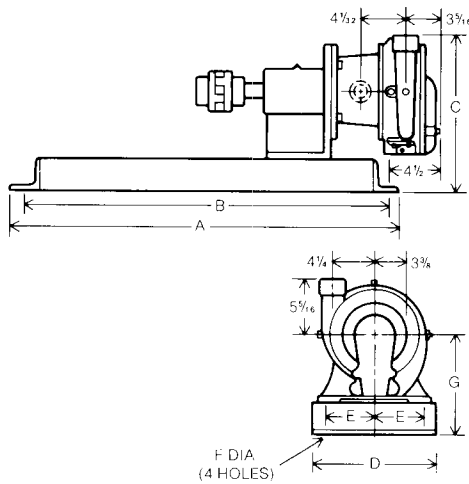
(For estimating only)

I2C (Standard Fitted), I2CI (All Iron) Two-Stage Centrifugals



Basic Pumps

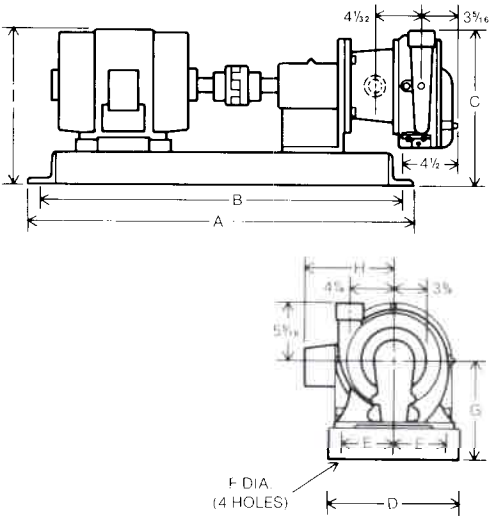
CATALOG NO.	ENGR. NO.	STANDARD IMPELLER DIA.	APPROX. SHIP WT. LBS.
I2C-5	15034E14	4 1/16"	125
I2CI-5	15034E34		
I2C-7	15034E13	5 5/16"	125
I2CI-7	15034E33		
I2C-10	15034E12	5 7/8"	125
I2CI-10	15034E32		
I2C-15	15034E11	6 1/16"	125
I2CI-15	15034E31		
I2C-20	15034E10	7"	125
I2CI-20/2C95	15034E1		



Frame Mounted (Less Motor)

CATALOG NO.	ENGR. NO.	RECOM. MOTOR HP AND FRAME	PUMP SHAFT DIA.	MOTOR SHAFT DIA.	DIMENSION-INCHES							APPROX. SHIP WT. LBS.
					A	B	C	D	E	F	G	
I2CB-5	17375B14	5	1 1/4"	1 1/8"	37	35	14 13/16	12	5	7/8	9 1/2	250
I2CIB-5	17375B39	182T										
I2CB-7	17375B13	7 1/2	1 1/4"	1 1/8"	37	35	14 13/16	12	5	7/8	9 1/2	250
I2CIB-7	17375B38	184T										
I2CB-10	17375B12	10	1 1/4"	1 3/8"	42	40	15 5/16	15	6 1/2	1 1/16	10	250
I2CIB-10	17375B37	213T										
I2CB-15	17375B11	15	1 1/4"	1 3/8"	42	40	15 5/16	15	6 1/2	1 1/16	10	250
I2CIB-15	17375B36	215T										
I2CB-20	17375B10	20	1 1/4"	1 3/8"	42	40	15 5/16	15	6 1/2	1 1/16	10	250
I2CIB-20	17375B35	254T										

*Includes pump base coupling, coupling guard



Frame Mounted (With Motor)

CATALOG NO.	ENGR. NO.	MOTOR HP	PUMP SHAFT DIA.	MOTOR SHAFT DIA.	DIMENSION-INCHES										APPROX. SHIP WT. LBS.
					A	B	C	D	E	F	G	H	I		
I2CB-5M	17375B999*	5	1 1/4"	1 1/8"	37	35	14 13/16	12	5	7/8	9 1/2	8 7/16	14 13/16	386	
I2CIB-5M	17375B998*														
I2CB-5M	17375B4	5	1 1/4"	1 1/8"	37	35	14 13/16	12	5	7/8	9 1/2	8 7/16	14 13/16	356	
I2CIB-5M	17375B34														
I2CB-7M	17375B3	7 1/2	1 1/4"	1 1/8"	37	35	14 13/16	12	5	7/8	9 1/2	8 7/16	14 13/16	360	
I2CIB-7M	17375B33														
I2CB-10M	17375B2	10	1 1/4"	1 3/8"	42	40	15 5/16	15	6 1/2	1 1/16	10	8 7/16	15 5/16	400	
I2CIB-10M	17375B32														
I2CB-15M	17375B1	15	1 1/4"	1 3/8"	42	40	15 5/16	15	6 1/2	1 1/16	10	8 7/16	15 5/16	440	
I2CIB-15M	17375B31														
I2CB-20M	17375B	20	1 1/4"	1 3/8"	42	40	15 5/16	15	6 1/2	1 1/16	10	9 1/16	15 5/16	500	
I2CIB-20M	17375B30														

*Includes pump base coupling, coupling guard, motor
**Single phase

K3149 4/02
Printed in U.S.A.

Myers®

Pentair Pump Group

F. E. Myers, 1101 Myers Parkway, Ashland, Ohio 44805-1969
419/289-1144, FAX: 419/289-6658, www.femyers.com

Myers (Canada), 269 Trillium Drive, Kitchener, Ontario N2G 4W5
519/748-5470, FAX: 519/748-2553

