

S40HT SERIES

High Temperature 4/10 HP
Submersible Sump Pumps



THE MYERS S40HT SUBMERSIBLE HIGH TEMPERATURE 4/10 HP SUMP PUMP IS DESIGNED FOR HOT WATER APPLICATIONS UP TO 195°F. The S40HT series is all cast iron construction with stainless steel fasteners. High temperature pumping applications include boiler blowdown pits, condensate pits and hot water transfer. The S40HT offers a cast iron vortex impeller which can pass a full 3/4" spherical solid. The S40HT is available in an automatic model with a piggyback mechanical float switch or a manual model for use with external controls. For more information, call your Myers distributor or the Myers Ashland, Ohio sales office at 419/289-1144.

ADVANTAGES BY DESIGN

DURABLE MOTOR WILL DELIVER MANY YEARS OF RELIABLE SERVICE.

- Oil-filled motor for maximum heat dissipation and continuous bearing lubrication.
- Overload protected, shaded pole motor eliminates starting switches and relays which are prone to fail.
- Heavy cast iron motor housing and volute case dissipate heat, allow motor to run cooler for extended life.

THE S40HT IS ENGINEERED FOR MANY YEARS OF MAINTENANCE-FREE OPERATION.

- Wide angle, mercury-free, high temperature mechanical float switch for maximum draw down. (Automatic piggyback models only).
- Automatic pump model can be operated manually by unplugging piggyback switch and plugging pump directly into outlet.
- Cast iron vortex impeller passes a full 3/4" solid.

PRODUCT CAPABILITIES

Capacities To	52 gpm	197 lpm
Heads To	23 ft.	7.0 m
Max. Spherical Solids	3/4 in.	19 mm
Liquids Handling	High temperature liquids	
Liquid Temp.	up to 195°F	up to 90°C
Motor Electrical Data	4/10 hp, 1550 rpm shaded pole, oil-filled 115 volts, 12.0 amps, 1 ph, 60 hz Class F Winding	
Third Party Approvals	CSA	
Acceptable pH Range	5 - 9	
Specific Gravity	.9 - 1.1	
Viscosity	28 - 35 SSU	
Discharge, NPT	1-1/2 in.	50.8 mm
Min. Sump Dia. Simplex	24 in.	60.1 cm
Duplex	36 in.	91.4 cm

Construction Materials

Motor Housing	cast iron, Class 30, ASTM A48
Impeller	cast iron, Class 20
Impeller Type	recessed, vortex
Volute	cast iron, Class 30, ASTM A48
Power Cord	20 ft., 16/3 SJOOW/SJOOW-A
Mechanical Shaft Seal	carbon and ceramic
Fasteners	300 Series SST

WHERE INNOVATION MEETS TRADITION

Myers[®]

Pentair Pump Group

S40HT SERIES

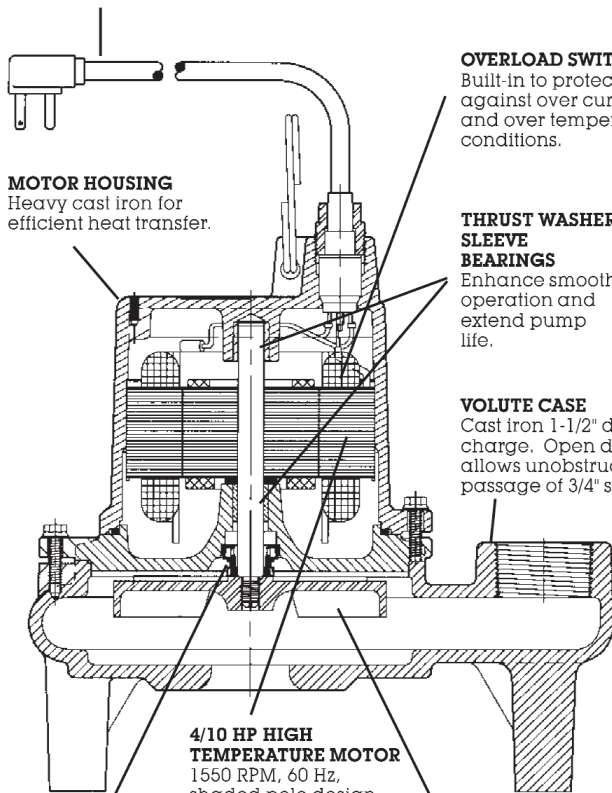
High Temperature 4/10 HP
Submersible Sump Pumps

HIGH TEMPERATURE MECHANICAL FLOAT SWITCH

Mercury-free, 90° angle operation. (Piggyback model only)

HIGH TEMPERATURE POWER CORD

Quick-disconnect watertight fitting.



MOTOR HOUSING
Heavy cast iron for efficient heat transfer.

OVERLOAD SWITCH
Built-in to protect against over current and over temperature conditions.

THRUST WASHER, SLEEVE BEARINGS
Enhance smooth operation and extend pump life.

VOLUTE CASE
Cast iron 1-1/2" discharge. Open design allows unobstructed passage of 3/4" solids.

4/10 HP HIGH TEMPERATURE MOTOR
1550 RPM, 60 Hz, shaded pole design eliminates starting switch or relay mechanism. Pressed in place and oil-filled for best alignment and heat transfer.

MECHANICAL SHAFT SEAL

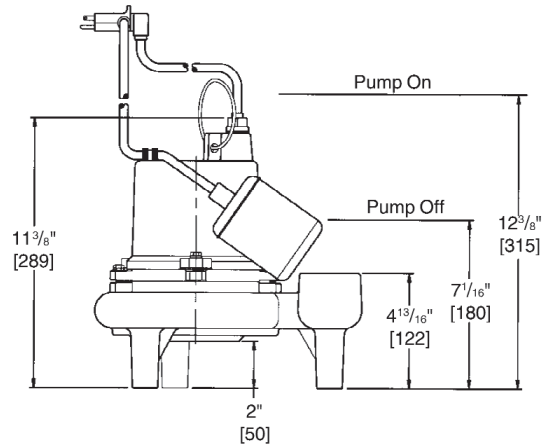
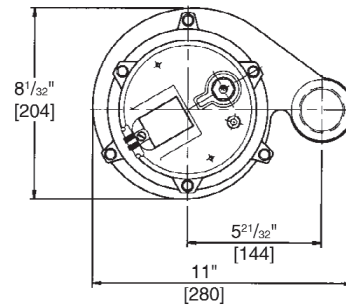
Carbon and ceramic faces. Body is stationary; prevents string or trash from winding on seal.

RECESSED IMPELLER

Operates out of volute passage, allowing maximum flow of liquids and solids up to 3/4" diameter.

DIMENSIONS

[] in mm



PERFORMANCE CURVE

