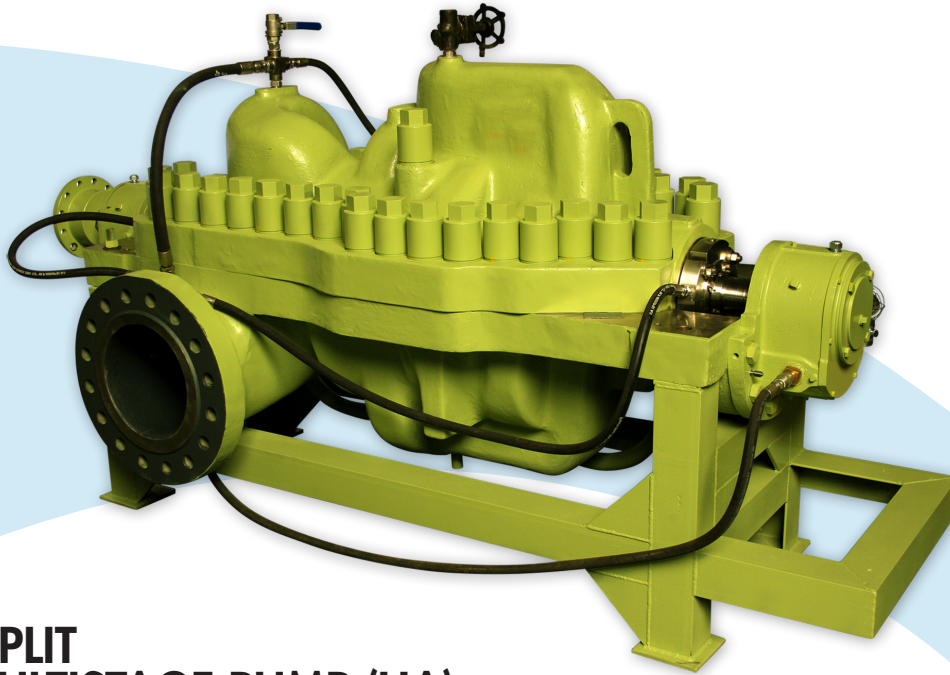




More info here!
Scan with your smartphone



AXIAL SPLIT CASE MULTISTAGE PUMP (HA)

OPERATING PARAMETERS

- Head up to 2,700 Feet (800 m)
- Power through 1.000 hp (750 kW)
- Pressures up to 1,180 psi (8.148 kPa)
- Frequency 50/60 Hz
- Temperatures to 300°F (150°C)
- Discharge sizes from 3" to 14"

DESIGN FEATURES

- Neptuno Pumps® high-efficiency design
- High-quality investment cast impellers and stage diffusers
- Axially split casing for ease of maintenance
- Heavy duty single row bolting
- Opposed impeller arrangement for thrust balancing

- Special material selection for standard or abrasive/corrosive service
- Different suction and discharge flange orientation
- Mechanical sealing

SERVICES

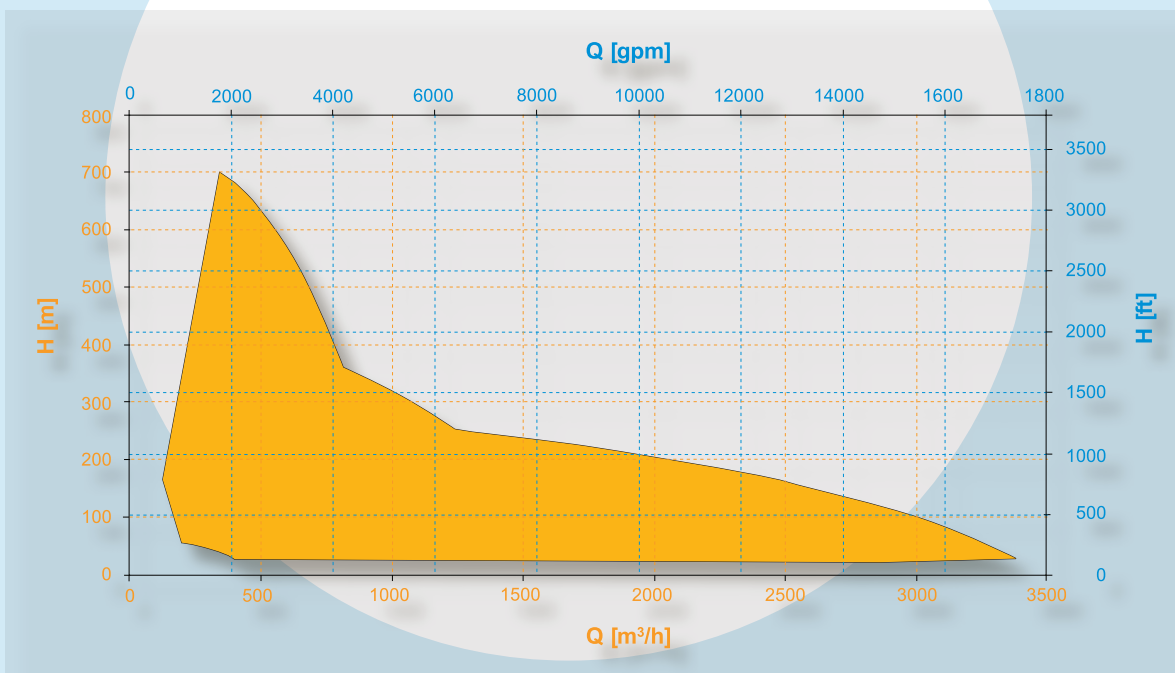
- Primary Water Supply – Fresh water or Sea water
- Mining Processes - Solvent Extraction/ Electro-Winning (SX/EW), Dewatering, Tailings & Post Processed Solutions
- Oil & Gas Production – Onshore, Offshore and Pipeline
- Pulp and Paper
- Municipal Water & Wastewater
- Agriculture - Irrigation.

MATERIALS

Wide ranges of engineered wear/corrosion resistant materials are available including:

- Bronze
- Cast Iron
- Carbon Steels
- Stainless Steels - 316, 317 SS
- Duplex - 2205
- Super Duplex - 2507
- Super Austenitic - 254 SMO
- Nickel-Based Super Alloys - Hastelloy
- Shafts - 316, 410, 420 SS, K-Monel, Zeron 100, 17-4 PH, Inconel 718, Nitronic 50.

AXIAL SPLIT CASE MULTISTAGE PUMP (HA)
Range Chart - 50/60 Hz - 1 Stage



AXIAL SPLIT CASE MULTISTAGE PUMP (HA)
Range Chart - 50/60 Hz - 1 Stage