

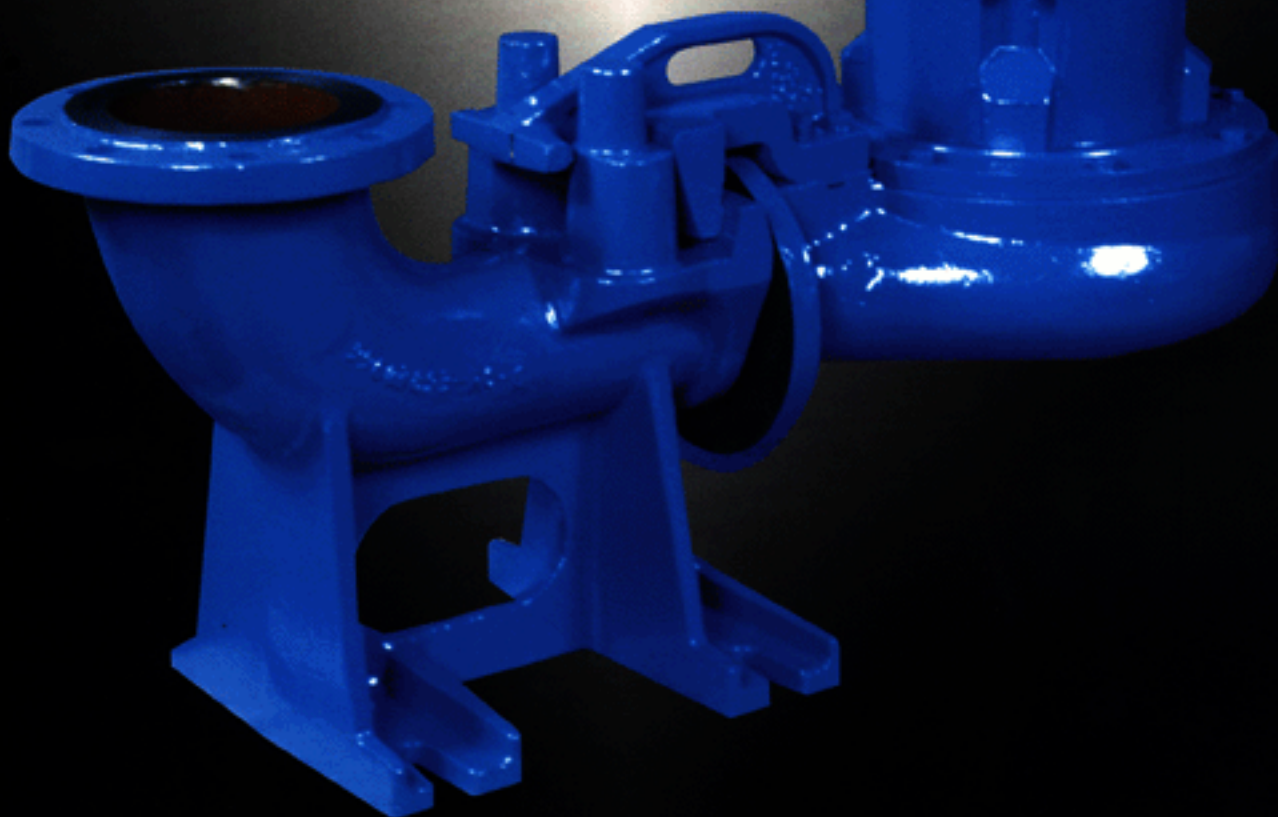
PACO
PUMPS

**Submersible
Quick Disconnect
Pumps**

Type QDSC

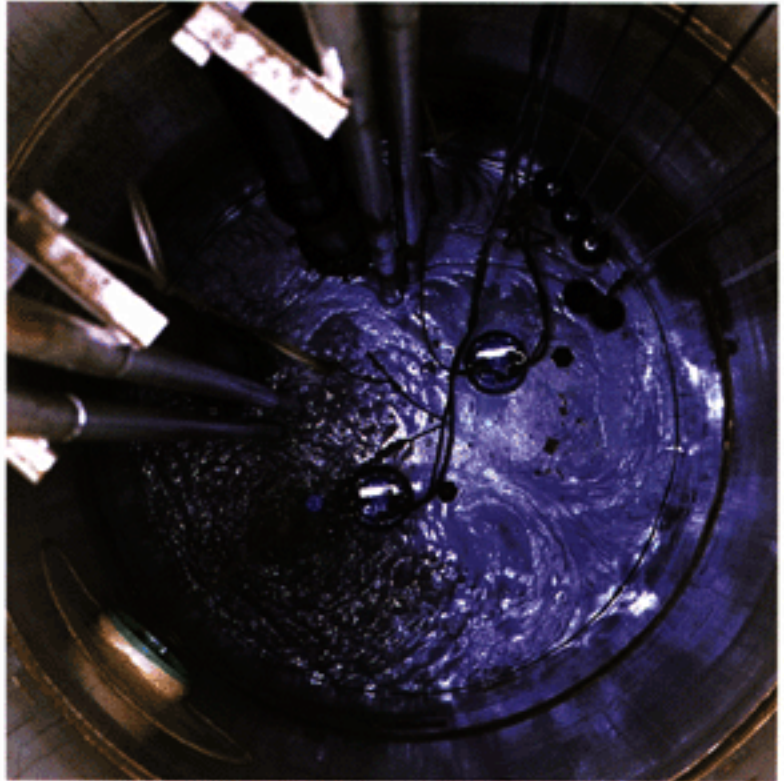
Flows to 4200 GPM

Heads to 250 Feet



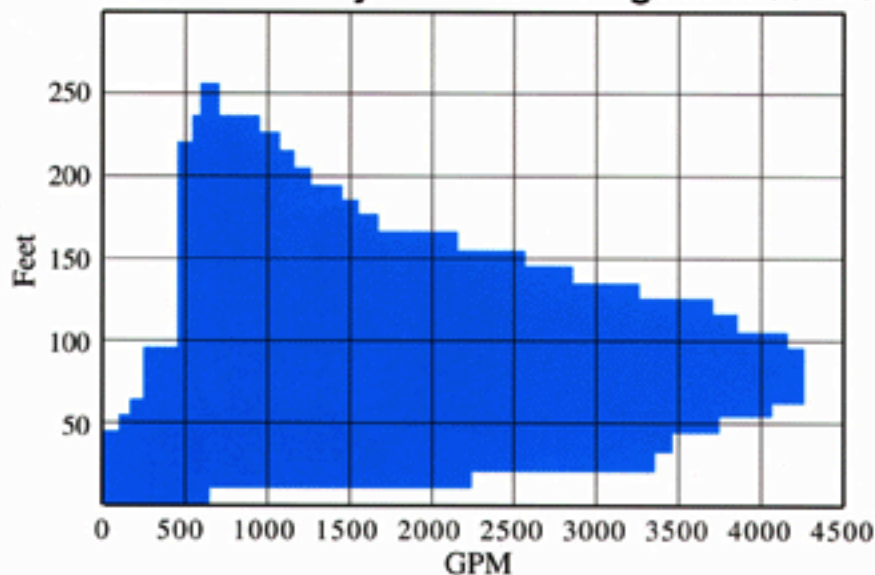
PACO Pumps... Features with proven benefits

- Impellers are trimmed to provide optimal performance at design conditions, resulting in lower operation costs.
- Increased efficiency reduces horsepower requirements resulting in lower investment and operation costs.
- Increased flows and heads with smaller pumps and reduced space requirements translating into lower installation costs.
- Adjustable cast iron case wear ring provides longer pump life and maintains hydraulic efficiencies resulting in reduced operation costs.
- Ease of spare parts procurement due to domestic manufacturing and parts kits programs.
- Cable entry assembly ensures the best possible protection against leakage into the motor, reducing maintenance problems and down time.
- Moisture and thermal sensors provide preventative maintenance diagnostics, reducing unscheduled down time.
- Double mechanical tandem seals provide extended life and motor protection, reducing maintenance problems and down time.



- Use of standard fasteners facilitates ease of maintenance through availability and reduced down time.
- Interchangeable with universal guide rail systems for added retrofit options.

QDSC Hydraulic Coverage at 1750 and 1150 RPM



Flows To: 4200 gpm
(954 m³/hr)

Heads To: 250 feet
(76 m)

Sizes To: 8 inch

HPs To: 150 HP

Features that make the **PACO** difference

34F Cable Entry Assembly - The electrical cables enter through Buna-N grommets and are epoxy sealed for a non-wicking connection that ensures the best possible protection against leakage into the motor.

1M Motor Housing - Rugged cast iron Class 30 or higher certified for Class 1; Division 1; Groups C&D service for hazardous locations and designed to withstand 200 psi water pressure at all sealing locations.

65A Motor - The UL and CSA approved motor is an air filled, squirrel cage induction design. Stator windings are dipped and baked with Class F insulation.

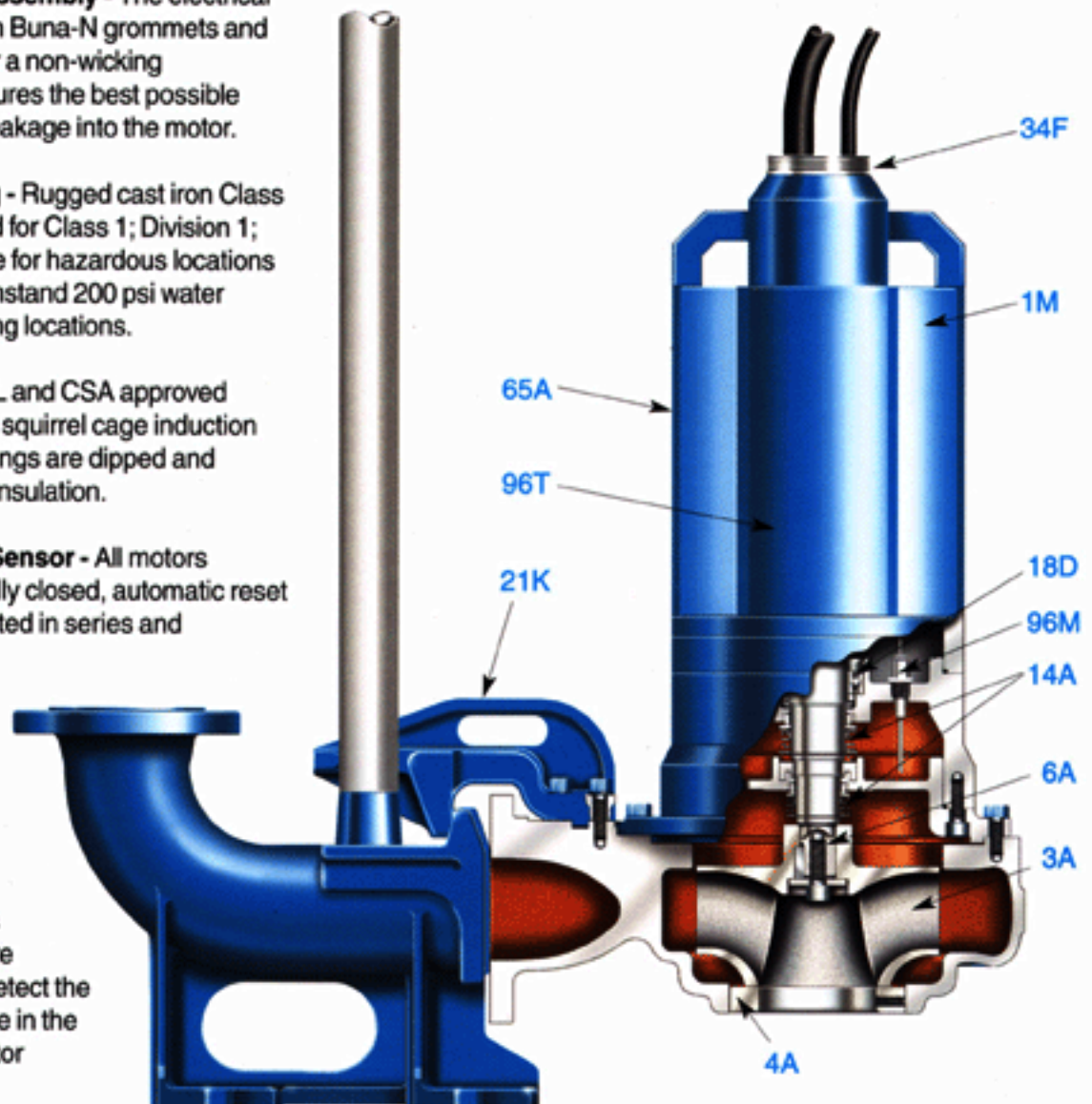
96T Temperature Sensor - All motors include dual, normally closed, automatic reset thermostats connected in series and embedded in adjoining phases to protect against an over temperature condition.

96M Moisture Sensor - All motors include dual moisture sensing probes to detect the presence of moisture in the oil chamber and stator housing.

18D Bearings - The bearings are oversized to carry thrust and radial loads at all operating conditions, prepacked, and sealed for life with special high temperature grease, ensuring trouble-free operation.

6A Shaft - Oversized AISI 416 stainless steel shaft to minimize deflection thereby reducing wear on seals and bearings.

14A Mechanical Seals - Two carbon/ceramic mechanical seals are mounted in tandem and operate independently in an oil bath for lubrication, cooling, and as an added barrier between the pumpage and stator housing.



3A Impeller - The Class 30 cast iron impeller has an enclosed design as standard and contoured passages to ensure clog-free performance. The impeller can be trimmed and balanced to meet design conditions with optimum efficiency.

4A Wear Ring - All pumps include an adjustable cast iron case wear ring as standard, with optional 400 series stainless steel case rings and impeller rings.

21K Sliding Bracket - The sliding bracket is designed to allow interchangeability with universal guide rail systems for new installations and retrofits at existing sites.

Other PACO Products

- Vertical Turbines
- In-Line Pumps
- Split Case Pumps
- Boiler Feed Pumps
- Sludge Pumps
- Regenerative Turbine Pumps
- Booster Packages
- Vertical Sump Pumps
- Vertical Sewage Pumps
- Dry Pit Non-Clogs
- Submersible Non-Clogs
- Dewatering and Sump Pumps
- Condensate Packages
- VFD Packages
- Trash Pumps

PACO[®]
PUMPS

PACO Pumps • 902 Koomey Road • Brookshire, TX 77423
(281) 994-2700 or (800) 955-5847
Fax: (800) 945-4777
www.pacopumps.com

Represented by: