



L10/40Gb/2005FA—PBS-brochure(ParagonPumps)Jesrich P2 New 0606



**PARAGON PUMP COMPANY, LLC**

18102 Courtney Breeze Drive  
Tampa, Florida, 33647, USA  
Tel : (813) 994-3356  
Fax : (813) 994-1237

**PARAGON PUMP (ASIA) PTE LTD**

37 Kallang Pudding Road #08-08  
Tong Lee Building Block B  
Singapore 349315  
Tel : (65) 6841-2818  
Fax : (65) 6841-5988





ARAGON  
UMPS

## PBS SERIES PUMP

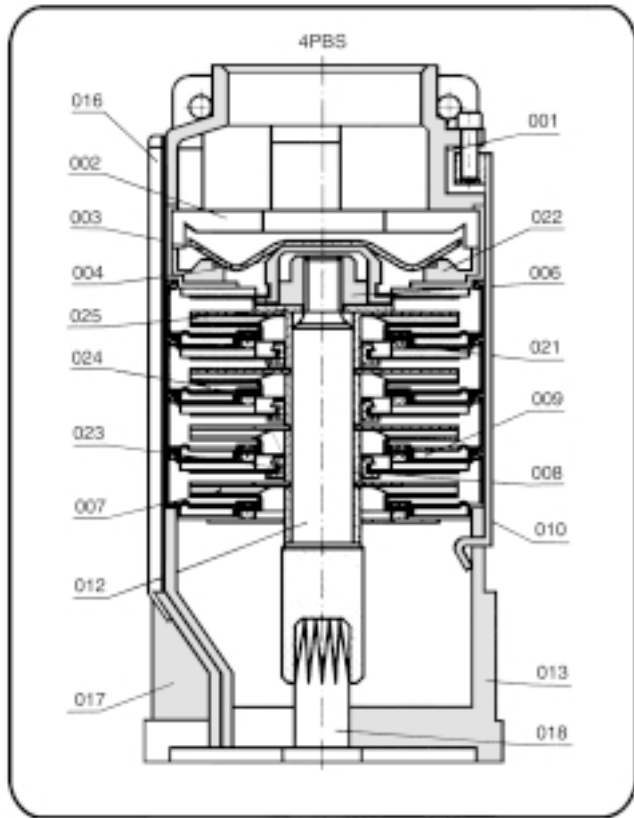


4" & 6" Stainless Steel Submersible Borehole Pump  
Pumps Type PBS



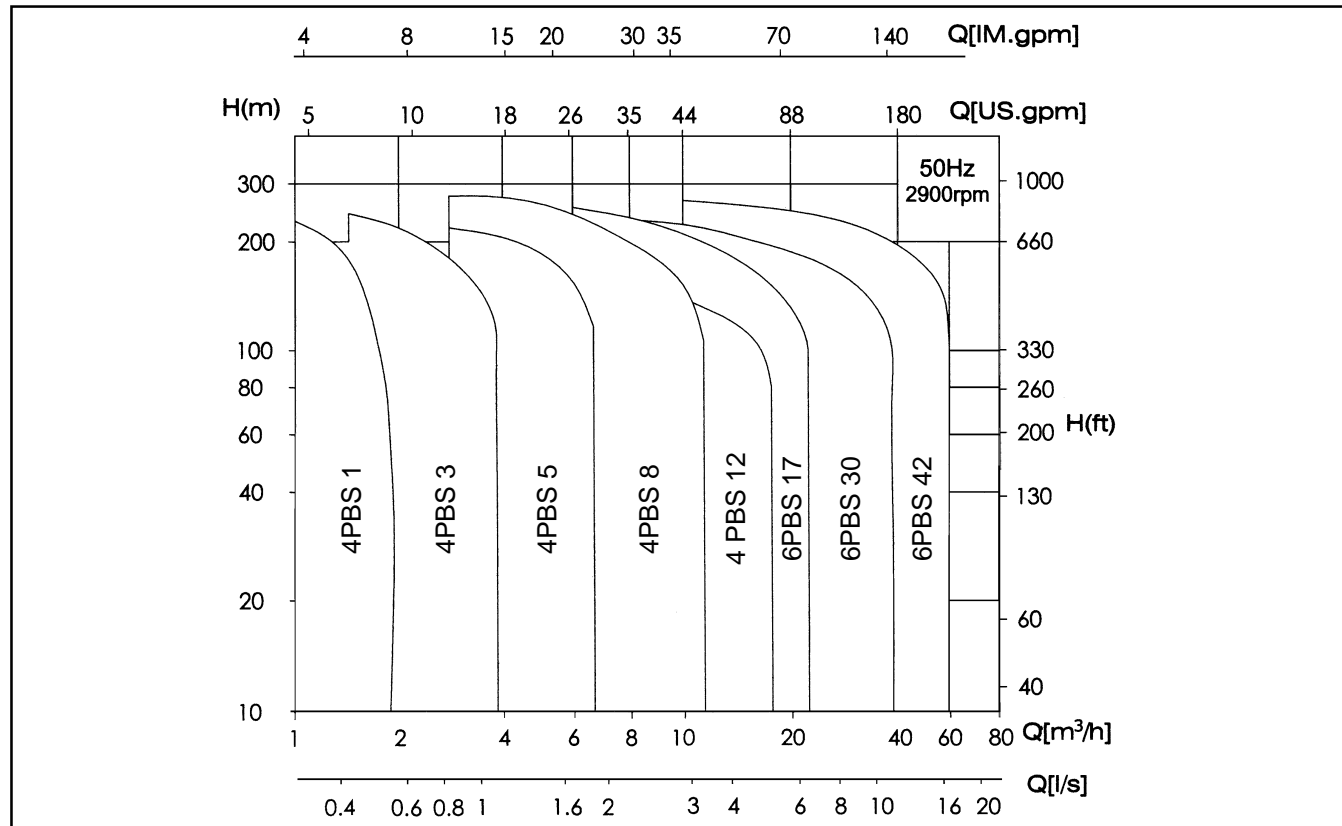
## PBS SERIES PUMP

### Material



Part No.	Name	Material
018	Motor	
013	Suction head	Stainless steel 304
010	Rod	Stainless steel 304
008	Bush	Stainless steel 304
009	Diffuser	Stainless steel 304
021	Wear ring	PVC
022	Valve base	NBR
006	Nut	Stainless steel 304
001	Discharge head	Stainless steel 304
017	Filter	Stainless steel 304
012	Shaft	Stainless steel 316
007	Impeller	Stainless steel 304
023	Sleeve	NBR
024	Floating ring	NBR
025	Washer	Stainless steel 304
004	Valve body	Stainless steel 304
003	Valve	Stainless steel 304
002	Valve cover	Stainless steel 304
016	Cable guard	Stainless steel 304

### Selection charts





## SUBMERSIBLE BOREHOLE PUMP

### Applications

The PBS series submersible borehole pump is mainly used for raw clean water supply and is ideally suited for:

- Private water supply systems
- Lowering of groundwater level
- Irrigation systems
- Industrial systems
- Pressure boosting
- Geothermal heating system

### Pumped liquids

Clean, thin, non-explosive liquids, not containing fibres or abrasive particles. Maximum content of sand about 50 g/m<sup>3</sup>.

For pumping aggressive liquids, a special submersible motor and special material of pump should be used.

Liquid temperature: up to 40 °C.

Pumps for higher liquid temperatures are available on request.

### Pump

The pump is a vertical multistage centrifugal pump with radial impellers directly coupled with oil-filled rewinding submersible motor or water-filled rewinding submersible motor.

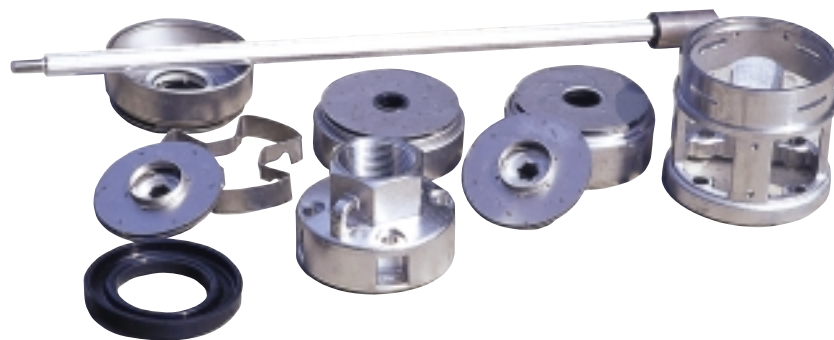
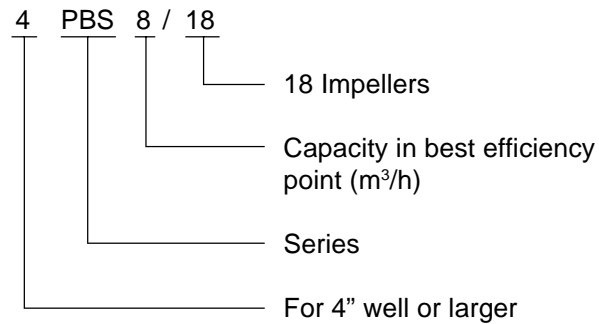
The pump part is made entirely of stainless steel and has water lubricated rubber bearings.

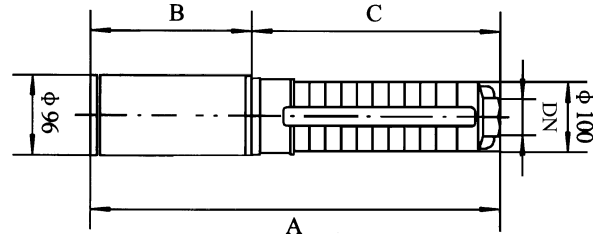
The casting stainless steel discharge chamber is more stronger with internally threaded and is designed with two attachment holes for fitting of a safety wire. A non-return valve is built into the discharge chamber.

Casting suction support is more stronger for high head pump, it is built to NEMA standards.

The maximum installation depth for pump is 350 m below the water level.

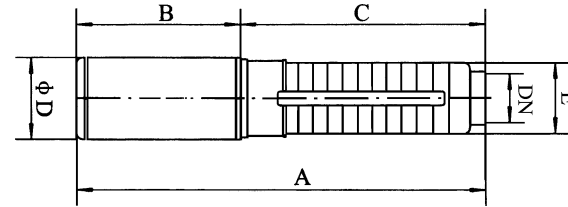
### Model code





**Technical Performance and Dimensions**

	Model	Power (Kw)	Outlet (DN)	Flowrate (M3/H)	Head (M)	A (mm)	B (mm)	C (mm)	Weight (Kg)
4PBS	1/6	0.37	1.1/4"	1	30	657	360	297	13
	1/9	0.37			46	720	360	360	14
	1/13	0.55			67	824	380	444	16
	1/17	0.75			87	938	410	528	18
	1/21	1.1			108	1062	450	612	20
	1/25	1.1			129	1146	450	696	21
	1/28	1.5			145	1259	500	759	23
	1/32	1.5			165	1343	500	843	24
	1/36	1.5			186	1427	500	927	25
	1/39	2.2			202	1560	570	990	30
	1/42	2.2			217	1623	570	1053	31
	1/46	2.2			238	1707	570	1137	32
	1/50	2.2			260	1791	570	1221	33
	4PBS	3/6			0.37	1.1/4"	3	24	657
3/9		0.55	36	740	380			360	15
3/12		0.75	49	833	410			423	17
3/15		1.1	61	936	450			486	19
3/18		1.1	74	999	450			549	20
3/22		1.5	91	1133	500			633	22
3/27		2.2	111	1308	570			738	26
3/32		2.2	131	1413	570			843	27
3/38		3.0	157	1583	620			969	33
3/43		3.0	178	1694	620			1074	34
4PBS	5/4	0.37	1.1/2"	5	15	615	360	255	10
	5/6	0.55			22	677	380	297	12
	5/8	0.75			30	749	410	339	13
	5/12	1.1			45	873	450	423	15
	5/17	1.5			64	1028	500	528	19
	5/21	2.2			79	1182	570	612	22
	5/25	2.2			94	1266	570	696	23
	5/29	3.0			108	1400	620	780	27
	5/33	3.0			123	1484	620	864	28
	5/38	4.0			142	1699	730	969	37
	5/43	4.0			161	1804	730	1074	38
4PBS	8/5	0.75	2"	8	19	835	420	415	20
	8/7	1.1			27	949	450	499	22
	8/10	1.5			39	1115	490	625	25
	8/12	2.2			47	1269	560	709	29
	8/15	2.2			59	1395	560	835	31
	8/18	3.0			71	1521	560	961	37
	8/21	4.0			83	1747	660	1087	42
	8/25	4.0			99	1915	660	1255	44
	8/30	5.5			119	2210	745	1467	51
	8/37	5.5			147	2504	745	1759	55
	8/44	7.5			174	2903	850	2053	64
	8/50	7.5			198	3155	850	2305	66
4PBS	12/5	1.5	2"	12	25	1005	490	515	20
	12/7	2.2			35	1205	560	645	22
	12/10	3.0			50	1400	560	840	29
	12/13	4.0			66	1695	660	1035	36
	12/15	5.5			76	1910	745	1165	42
	12/18	5.5			91	2105	745	1360	44
	12/21	7.5			106	2405	850	1555	66
	12/25	7.5			126	2665	850	1815	69



### Technical Performance and Dimensions

	Model	Power (Kw)	Outlet (DN)	Flowrate (M3H)	Head (M)	A (mm)	B (mm)	C (mm)	D (mm)	E (mm)	Weight (Kg)
6PBS	17/1	0.55	2 1/2"	17	7	732	390	342	96	131	19
	17/2	1.1			14	852	450	402	96		21
	17/3	2.2			22	1022	560	462	96		24
	17/4	2.2			29	1082	560	522	96		25
	17/5	3.0			36	1142	560	582	96		28
	17/6	4.0			44	1302	660	642	96		32
	17/7	4.0			51	1362	660	702	96		33
	17/8	5.5			59	1507	745	762	96		39
	17/9	5.5			66	1567	745	822	96		40
	17/10	5.5			73	1627	745	882	96		42
	17/11	7.5			81	1792	850	942	96		51
	17/12	7.5			88	1852	850	1002	96		52
	17/13	7.5			96	1912	850	1062	96		53
	17/14	9.2			103	1822	700	1122	138		65
	17/15	9.2			110	1882	700	1182	138		64
	17/16	9.2			118	1942	700	1242	138		65
	17/17	9.2			125	2002	700	1302	138		66
	17/18	11			132	2102	740	1362	138		73
	17/19	11			140	2162	740	1422	138		74
	17/20	11			147	2222	740	1482	138		75
	17/21	13			154	2312	770	1542	138		85
	17/22	13			162	2372	770	1602	138		86
	17/23	13			169	2432	770	1662	138		87
	17/24	13			176	2492	770	1722	138		88
	17/25	15			184	2602	820	1782	138		91
	17/26	15			191	2662	820	1842	138		92
6PBS	30/1	1.1	3"	30	7.5	818	450	368	96	131	22
	30/2	2.2			15	1024	560	464	96		25
	30/3	3.0			22	1120	560	560	96		28
	30/4	4.0			29	1316	660	656	96		31
	30/5	5.5			37	1497	745	752	96		38
	30/6	5.5			44	1593	745	848	96		40
	30/7	7.5			52	1794	850	944	96		49
	30/8	7.5			59	1890	850	1040	96		50
	30/9	9.2			66	1836	700	1136	138		60
	30/10	9.2			74	1932	700	1232	138		61
	30/11	9.2			81	2028	700	1328	138		62
	30/12	11			88	2164	740	1424	138		71
	30/13	11			96	2260	740	1520	138		72
	30/14	13			103	2386	770	1616	138		79
	30/15	13			110	2482	770	1712	138		80
	30/16	15			118	2628	820	1808	138		87
	30/17	15			125	2724	820	1904	138		86
	30/18	18.5			132	2880	880	2000	138		91
	30/19	18.5			140	2976	880	2096	138		92
	30/20	18.5			147	3072	880	2192	138		93
	30/21	18.5			155	3168	880	2288	138		94
	30/22	22			162	3304	920	2384	138		110
	30/23	22			169	3400	920	2480	138		111
	30/24	22			177	3496	920	2576	138		112
	30/25	22			184	3592	920	2672	138		113
	6PBS	42/1			2.2	3"	42	9	948		560
42/2		3.0	18	1061	560			501	96	29	
42/3		5.5	27	1359	745			614	96	35	
42/4		7.5	37	1577	850			727	96	41	
42/5		7.5	46	1690	850			840	96	42	
42/6		9.2	56	1653	700			953	138	59	
42/7		11	65	1806	740			1066	138	64	
42/8		13	75	1949	770			1179	138	68	
42/9		15	84	2112	820			1292	138	73	
42/10		15	94	2225	820			1405	138	74	
42/11		18.5	104	2398	880			1518	138	82	
42/12		18.5	113	2511	880			1631	138	83	
42/13		22	123	2664	920			1744	138	99	
42/14		22	132	2777	920			1857	138	101	
42/15		22	142	2890	920			1970	138	102	
42/16		26	151	3063	980			2083	138	119	
42/17		26	161	3176	980			2196	138	120	
42/18		30	170	3359	1050			2309	138	133	
42/19		30	180	3472	1050			2422	138	134	
42/20		30	189	3585	1050			2535	138	135	