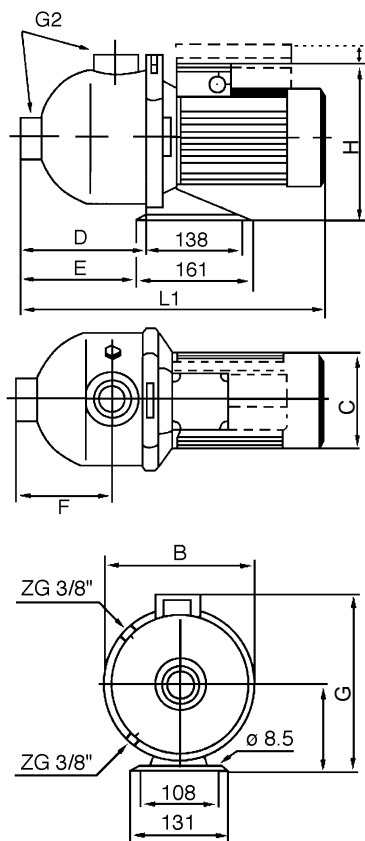


Dimension and Weight

Model	L1	H	G	G2	A	B	C	D	E	F	Motor (Kw)	Weight (Kg)
PM 2-10	400	220	210	1"/1"	110	165	145	160	150	120	0.37	10
PM 2-20	400	220	210	1"/1"	110	165	145	160	150	120	0.37	10
PM 2-30	400	220	210	1"/1"	110	165	145	160	150	120	0.55	10
PM 2-40	400	220	210	1"/1"	110	165	145	160	150	120	0.55	10
PM 2-50	400	220	210	1"/1"	110	165	170	160	150	120	0.75	10
PM 2-60	420	220	210	1"/1"	110	165	170	160	150	120	0.75	10
PM 4-10	400	220	210	1 1/4"/1"	110	165	145	160	150	120	0.55	10
PM 4-20	400	220	210	1 1/4"/1"	110	165	145	160	150	120	0.55	10
PM 4-30	445	220	210	1 1/4"/1"	110	165	145	160	150	120	0.75	10
PM 4-40	445	220	210	1 1/4"/1"	110	165	145	160	150	120	0.75	10
PM 8-10	540	220	264	2"/2"	116	230	145	280	270	178	0.75	20
PM 8-20	540	220	264	2"/2"	116	230	145	280	270	178	0.75	20
PM 8-30	550	220	264	2"/2"	116	230	170	280	270	178	1.1	25
PM 8-40	560	230	264	2"/2"	116	230	170	280	270	178	1.5	25
PM 8-50	570	230	264	2"/2"	116	230	180	280	270	178	2.2	30
PM 16-10	560	220	264	2"/2"	116	230	170	280	270	178	1.1	20
PM 16-20	570	230	264	2"/2"	116	230	180	280	270	178	2.2	25
PM 16-30	590	230	264	2"/2"	116	230	180	280	270	178	3.0	30
PMM 2-20	400	220	210	1"/1"	110	165	145	160	150	120	0.55	10
PMM 2-30	420	220	210	1"/1"	110	165	145	160	150	120	0.75	10
PMM 2-40	440	220	210	1"/1"	110	165	170	160	150	120	1.1	15
PMM 2-50	440	220	210	1"/1"	110	165	170	160	150	120	1.1	15
PMM 4-20	420	220	210	1 1/4"/1"	110	165	145	160	150	120	0.75	10
PMM 4-30	440	220	210	1 1/4"/1"	110	165	170	160	150	120	1.1	15
PMM 4-40	450	220	210	1 1/4"/1"	110	165	170	160	150	120	1.5	20
PMM 8-10	540	220	264	2"/2"	116	230	145	280	270	178	0.75	20
PMM 8-20	560	230	264	2"/2"	116	230	170	280	270	178	1.5	25
PMM 8-30	570	230	264	2"/2"	116	230	180	280	270	178	2.2	25
PMM 8-40	590	230	264	2"/2"	116	230	180	280	270	178	3.0	30
PMM 16-10	475	220	264	2"/2"	116	230	180	280	270	178	2.2	20
PMM 16-20	510	230	264	2"/2"	116	230	220	280	270	178	4.0	25
PMM 16-30	590	230	264	2"/2"	116	230	255	280	270	178	5.5	30



PM SERIES PUMP



Horizontal Multistage Stainless Steel Pumps Type PM



PARAGON PUMP COMPANY, LLC
18102 Courtney Breeze Drive
Tampa, Florida, 33647, USA
Tel : (813) 994-3356
Fax : (813) 994-1237

PARAGON PUMP (ASIA) PTE LTD
37 Kallang Pudding Road #08-08
Tong Lee Building Block B
Singapore 349315
Tel : (65) 6841-2818
Fax : (65) 6841-5988

HORIZONTAL MULTISTAGE STAINLESS STEEL PUMPS TYPE: PM

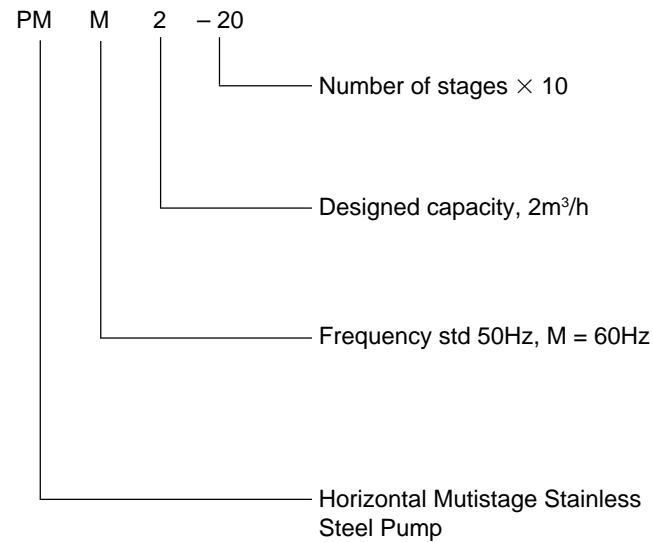
General Description

PM or Horizontal Multistage Stainless Steel Pumps are used for clean water of liquids of which chemical and physical characteristics are similar to those of water, widely used for high buildings, general industrial, circulation water in supply system... etc.

Technical Data

- a. Ambient Temperature
Maximum: +40°C
- b. Liquid Temperature
Standard design: -15°C to +90°C
For hot water design: -15°C to +120°C
- c. Max operating pressure: 10 bar
Max suction pressure is limited by max operating pressure Axial inlet and Radial outlet
- d. Electric Motor standard be supplied as:
50Hz, single phase 220V or three phase 380V, aluminium casing, IP54, classF.
60Hz, single phase 110V or three phase 220V, aluminium casing, IP54, classF.
- e. Pump's material can be supplied in 304 or 316 stainless steel.

Pump Identification Markings



Performance Curve

