



ARAGON  
U M P S  
50Hz & 60Hz

## PV SERIES



Vertical Multistage Stainless Steel Pump

**VERTICAL MULTISTAGE STAINLESS STEEL PUMP TYPE: PV**

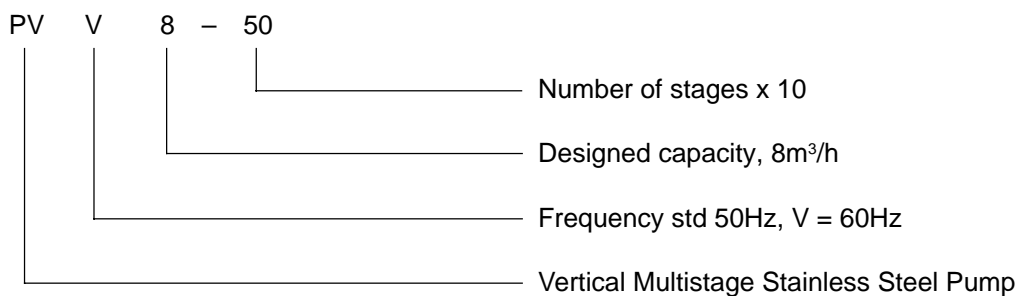
**General Description**

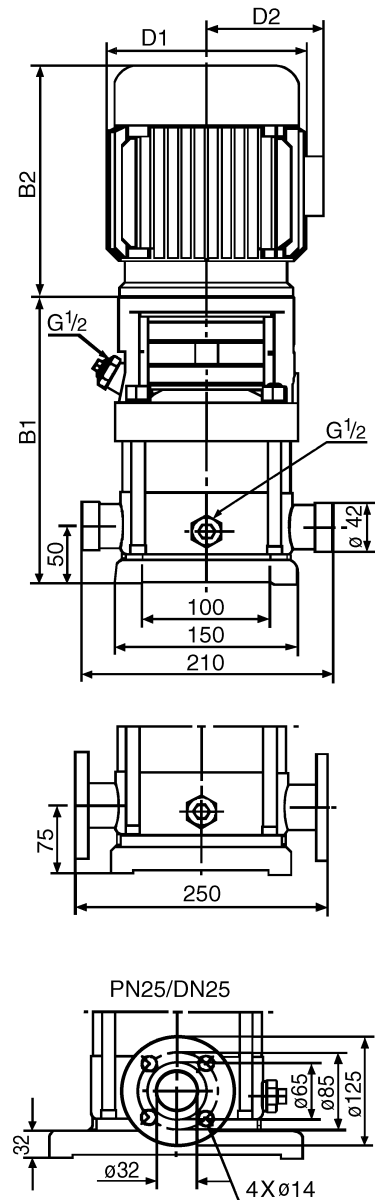
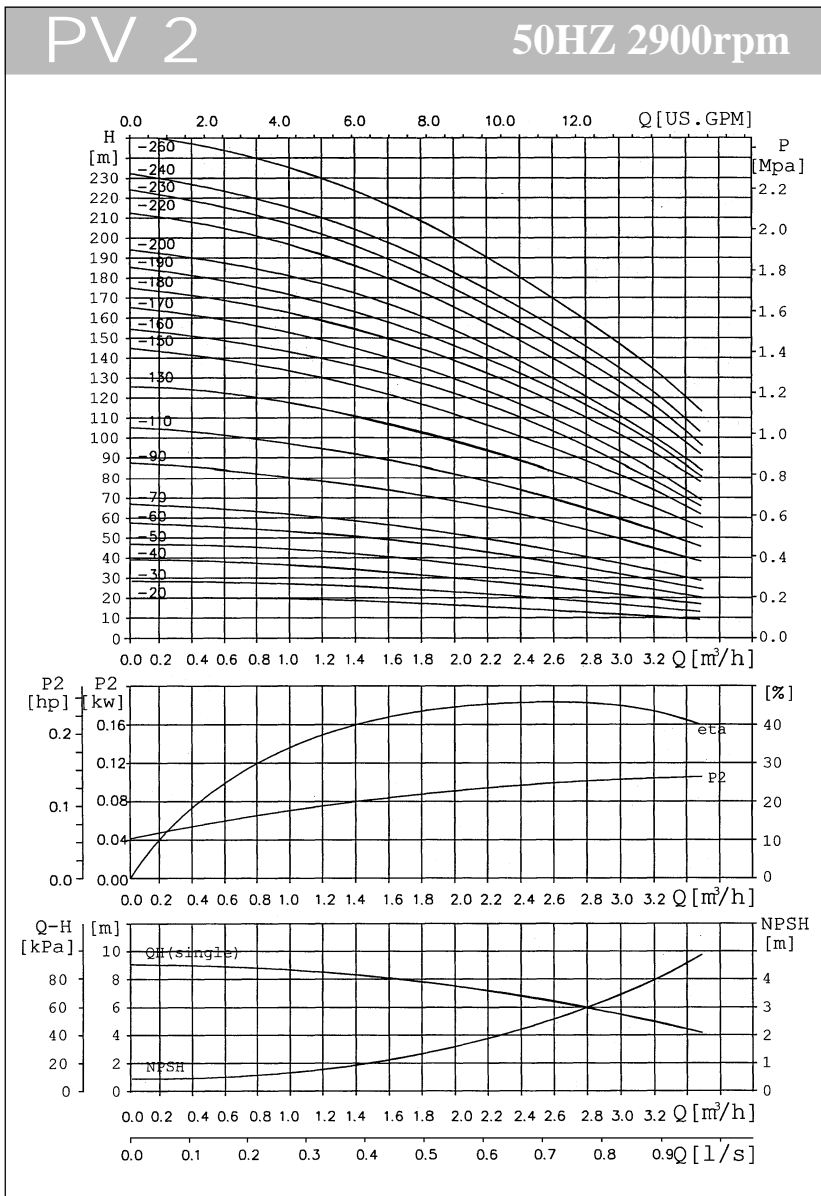
PV Vertical Multistage Stainless Steel Pumps are used for clean water of liquids of which chemical and physical characteristics are similar those of water, widely used for high buildings, plants, mining city water supply system and irrigation.

**Technical Data**

- a. Ambient Temperature  
Maximum: +40°C
- b. Liquid Temperature  
Standard design: -15°C to +90°C  
For hot water design: -15°C to +120°C (Optional)
- c. Min Suction Pressure  
According to NPSH add 0.5m water head.
- d. Electric Motor standard be supplied as:  
50Hz, single phase 220V or three phase 380V, aluminium casing, IP54, classF.  
60Hz, single phase 110V or three phase 220V, aluminium casing, IP54, classF.
- e. Pump's Material  
Standard Supply: 304 SS  
Optional Supply: 316 SS

**Pump Identification Markings**

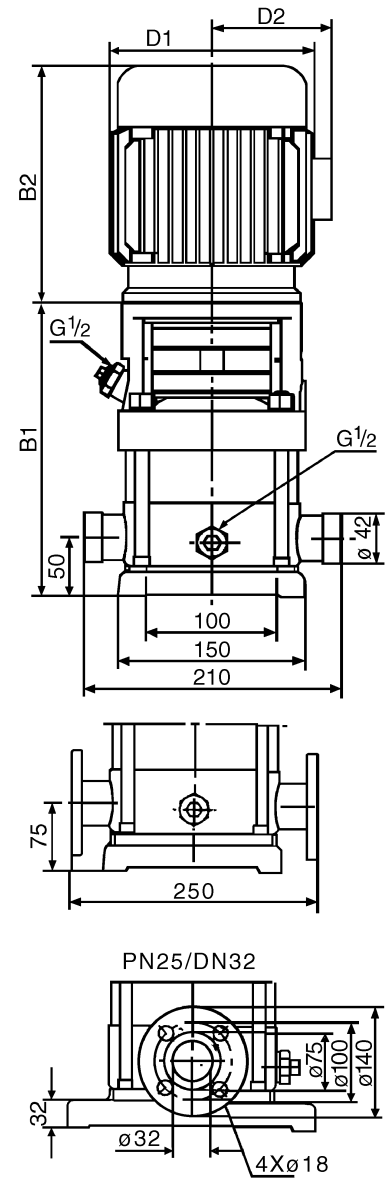
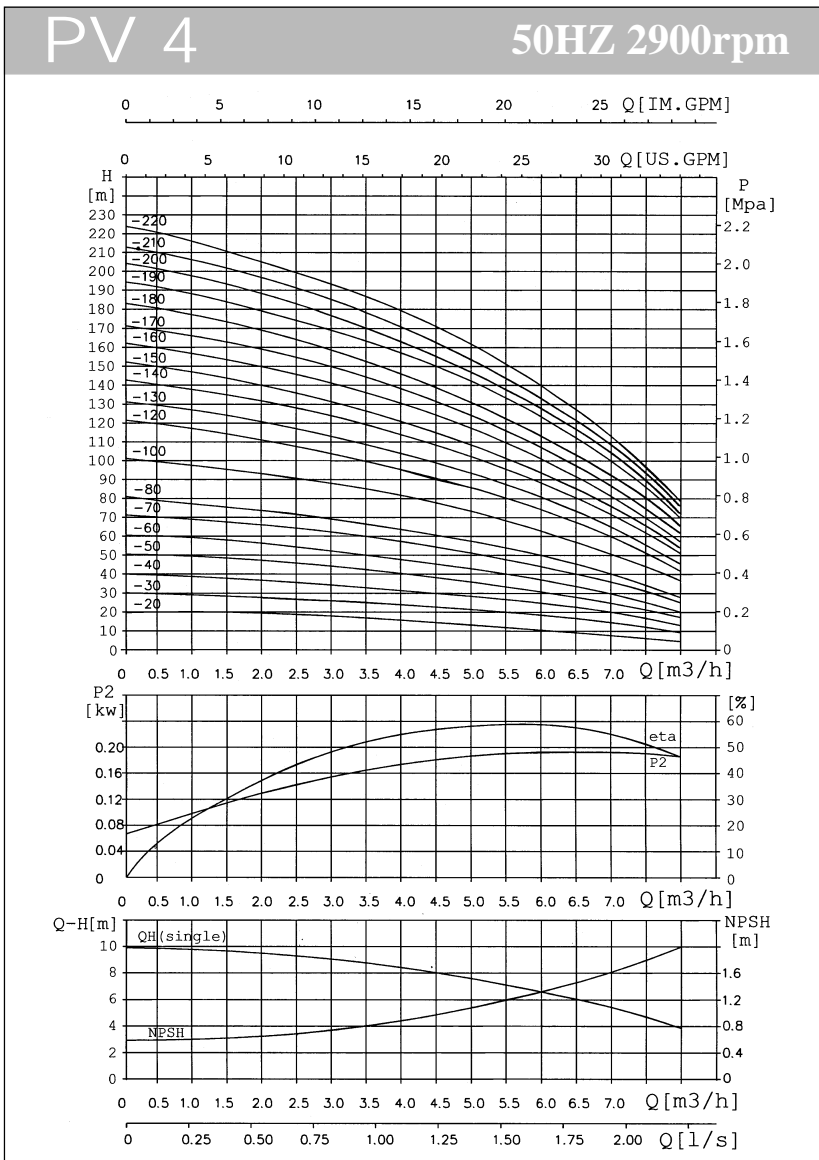




**Dimension and Weight**

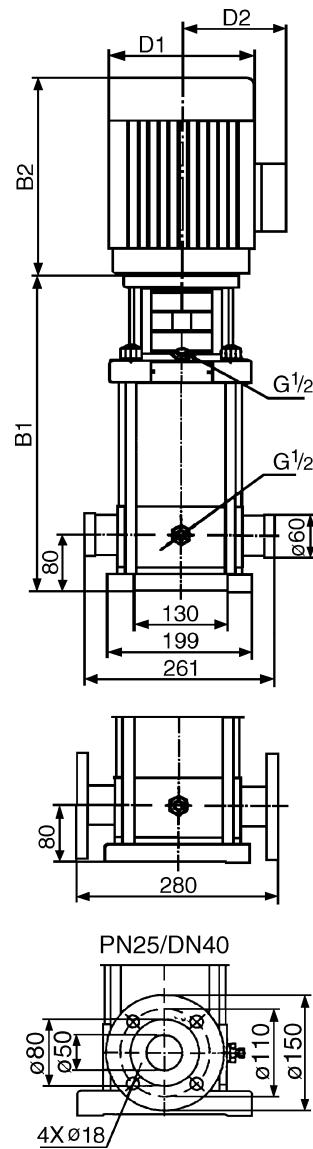
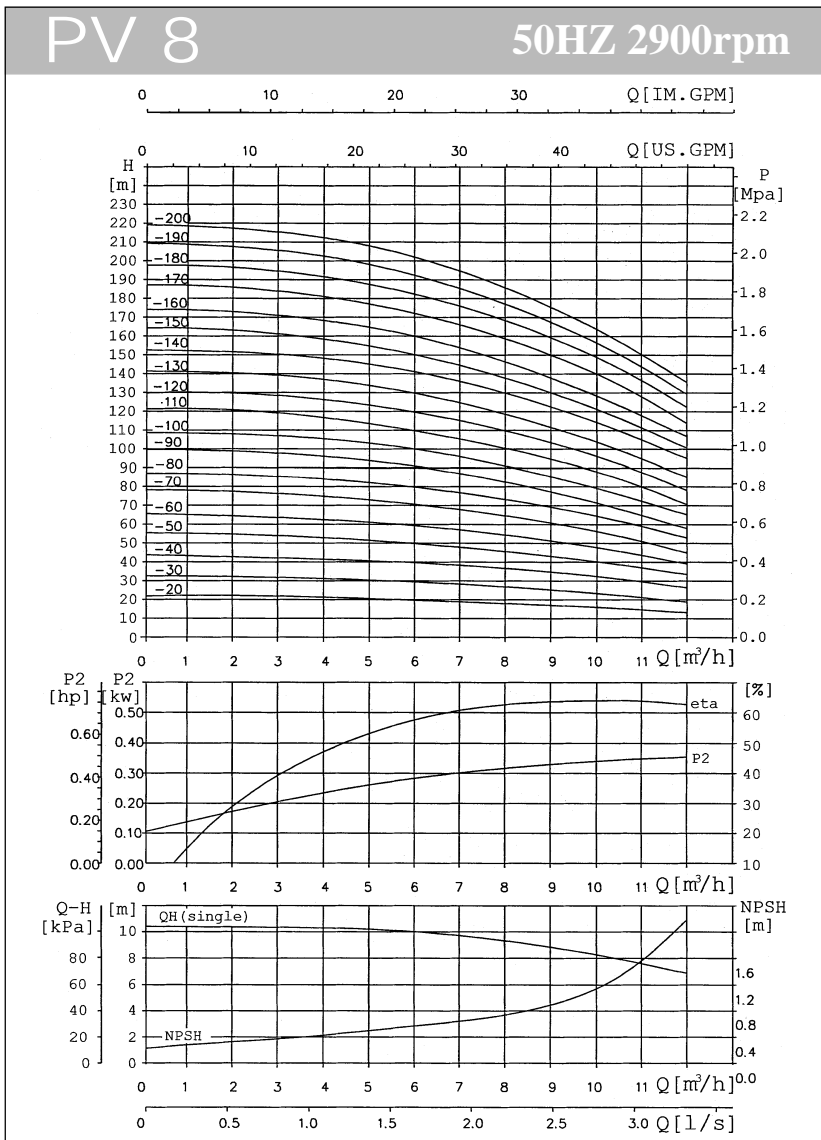
Model	Size (mm)					Weight (Kg)	Motor (Kw)
	B1	B2	B1+B2	D1	D2		
PV2-20	220	210	430	148	117	20	0.37
PV2-30	238	210	448	148	117	20	0.37
PV2-40	256	210	466	148	117	20	0.55
PV2-50	274	210	484	148	117	20	0.55
PV2-60	297	245	542	170	142	25	0.75
PV2-70	315	245	560	170	142	25	0.75
PV2-90	351	245	596	170	142	30	1.1
PV2-110	387	245	632	170	142	30	1.1
PV2-130	440	290	730	190	155	35	1.5
PV2-150	476	290	766	190	155	35	1.5
PV2-160	494	290	784	190	155	35	1.5
PV2-170	512	290	802	190	155	40	1.5
PV2-180	530	290	820	190	155	40	2.2
PV2-190	548	290	838	190	155	40	2.2
PV2-200	566	290	856	190	155	40	2.2
PV2-220	602	290	892	190	155	45	2.2
PV2-230	622	315	937	197	165	45	3.0
PV2-240	642	315	957	197	165	45	3.0
PV2-260	682	315	997	197	165	50	3.0

# PV SERIES



## Dimension and Weight

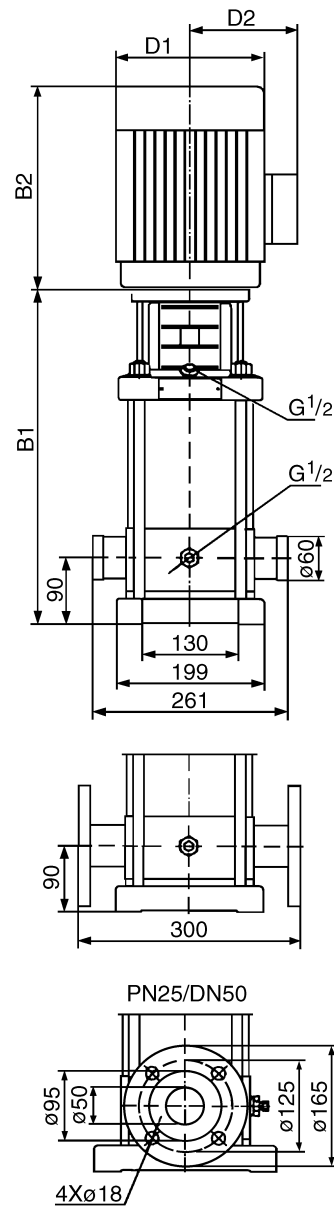
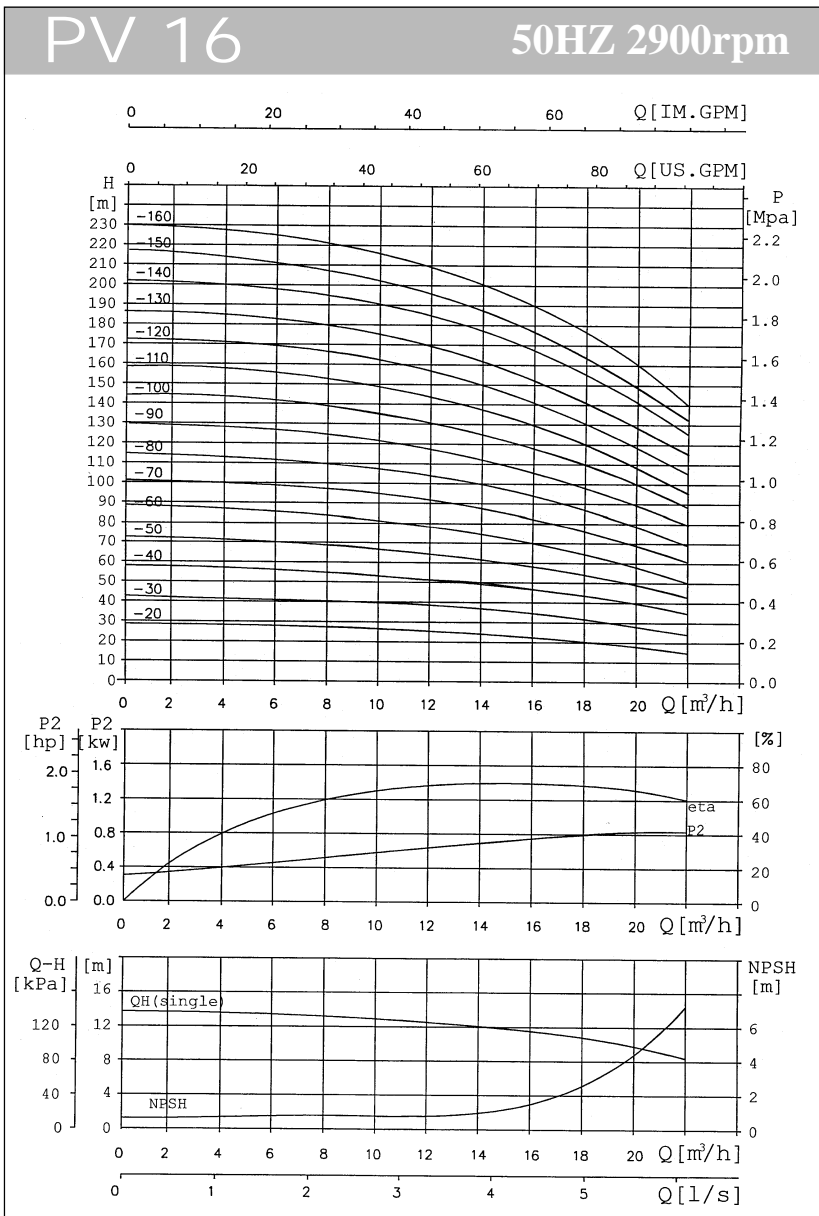
Model	Size (mm)					Weight (Kg)	Motor (Kw)
	B1	B2	B1+B2	D1	D2		
PV4-20	238	210	448	148	117	20	0.37
PV4-30	265	210	475	148	117	20	0.55
PV4-40	297	245	542	170	142	20	0.75
PV4-50	324	245	569	170	142	25	1.1
PV4-60	351	245	596	170	142	25	1.1
PV4-70	395	290	685	190	155	30	1.5
PV4-80	422	290	712	190	155	30	1.5
PV4-100	476	290	766	190	155	30	2.2
PV4-120	530	290	820	190	155	35	2.2
PV4-130	561	290	851	190	155	35	2.2
PV4-140	592	315	907	197	165	35	3.0
PV4-150	619	315	934	197	165	40	3.0
PV4-160	646	315	961	197	165	40	3.0
PV4-170	673	315	988	197	165	40	3.0
PV4-180	700	335	1035	230	188	45	4.0
PV4-190	727	335	1062	230	188	45	4.0
PV4-200	754	335	1089	230	188	45	4.0
PV4-210	781	335	1116	230	188	45	4.0
PV4-220	808	335	1143	230	188	50	4.0



**Dimension and Weight**

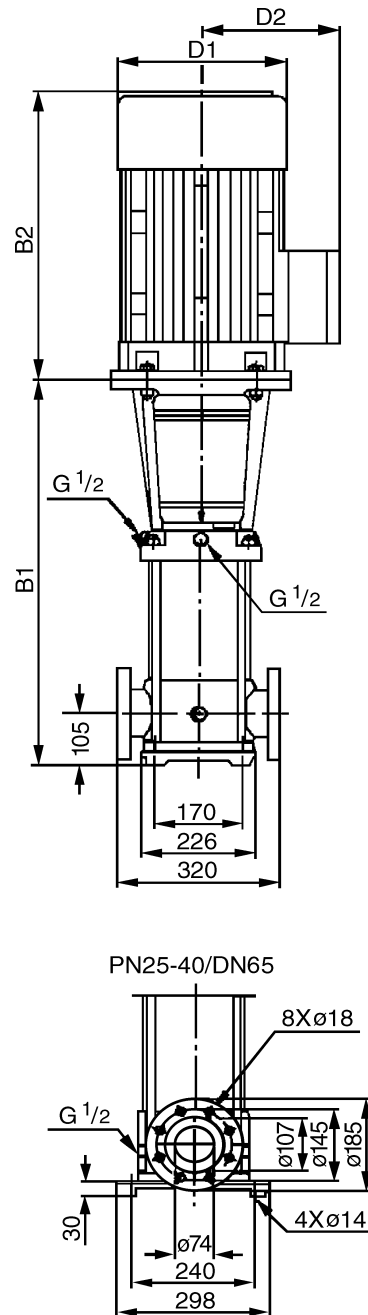
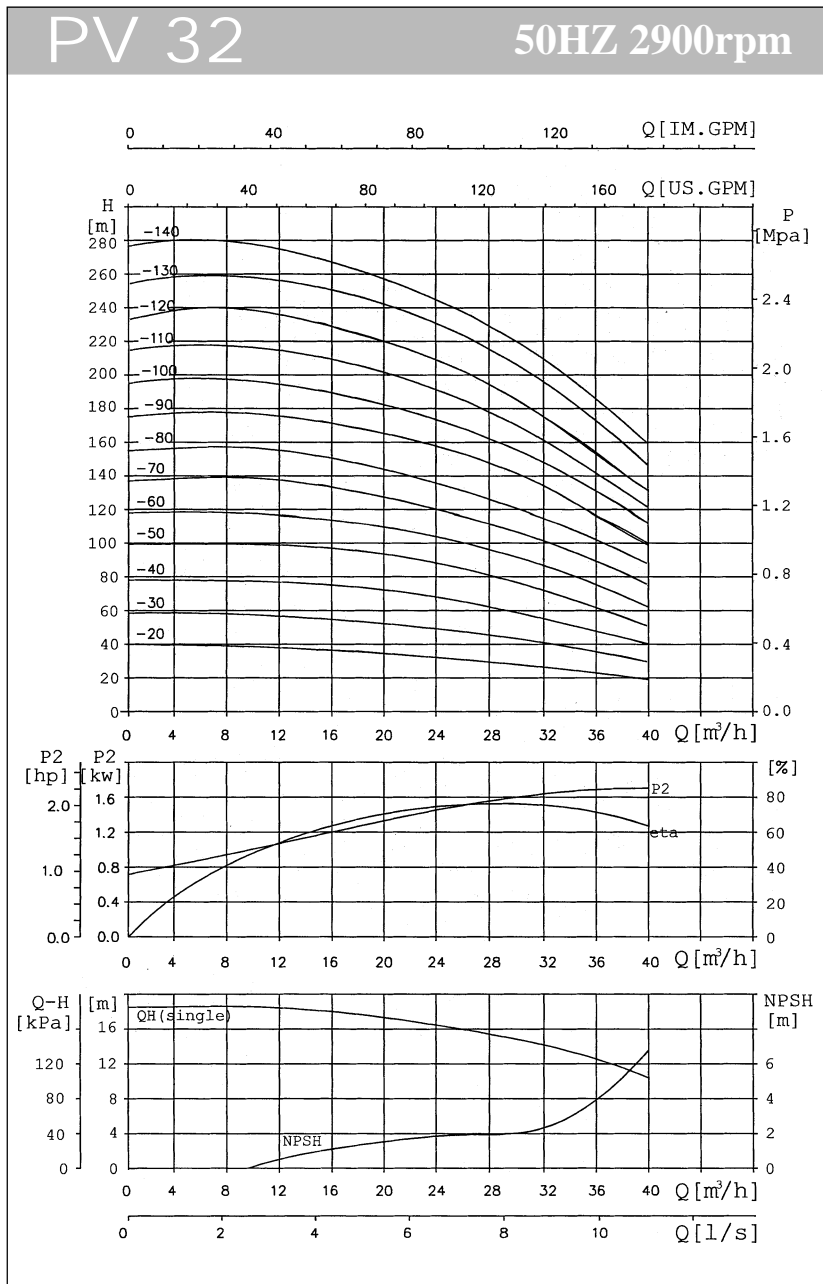
Model	Size (mm)					Weight (Kg)	Motor (Kw)
	B1	B2	B1+B2	D1	D2		
PV8-20	350	245	595	170	142	25	0.75
PV8-30	380	245	625	170	142	30	1.1
PV8-40	420	290	710	190	155	30	1.5
PV8-50	450	290	740	190	155	40	2.2
PV8-60	480	290	770	190	155	40	2.2
PV8-70	515	315	830	197	165	40	3.0
PV8-80	550	315	865	197	165	45	3.0
PV8-90	580	315	895	197	165	45	3.0
PV8-100	610	335	945	230	188	55	4.0
PV8-110	640	335	975	230	188	55	4.0
PV8-120	670	335	1005	230	188	55	4.0
PV8-130	710	430	1140	260	208	70	5.5
PV8-140	750	430	1180	260	208	80	5.5
PV8-150	780	430	1210	260	208	80	5.5
PV8-160	810	430	1240	260	208	80	5.5
PV8-170	840	430	1270	260	208	85	7.5
PV8-180	870	430	1300	260	208	90	7.5
PV8-190	900	430	1330	260	208	90	7.5
PV8-200	930	430	1360	260	208	90	7.5

# PV SERIES



### Dimension and Weight

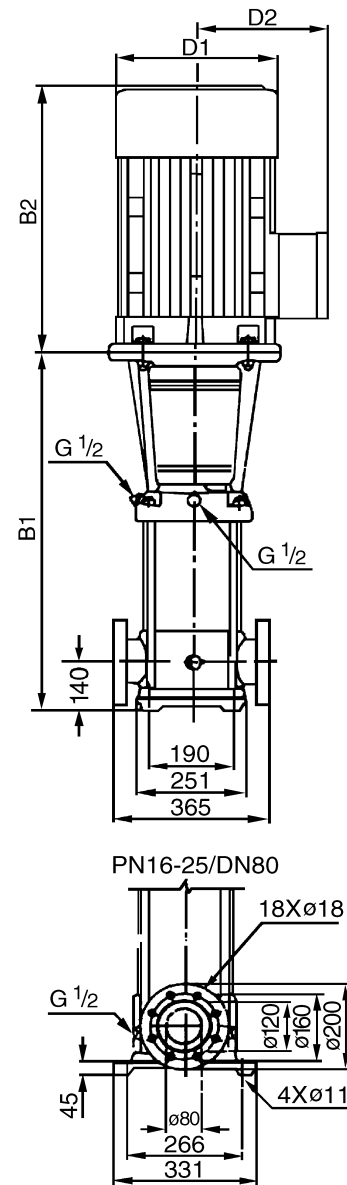
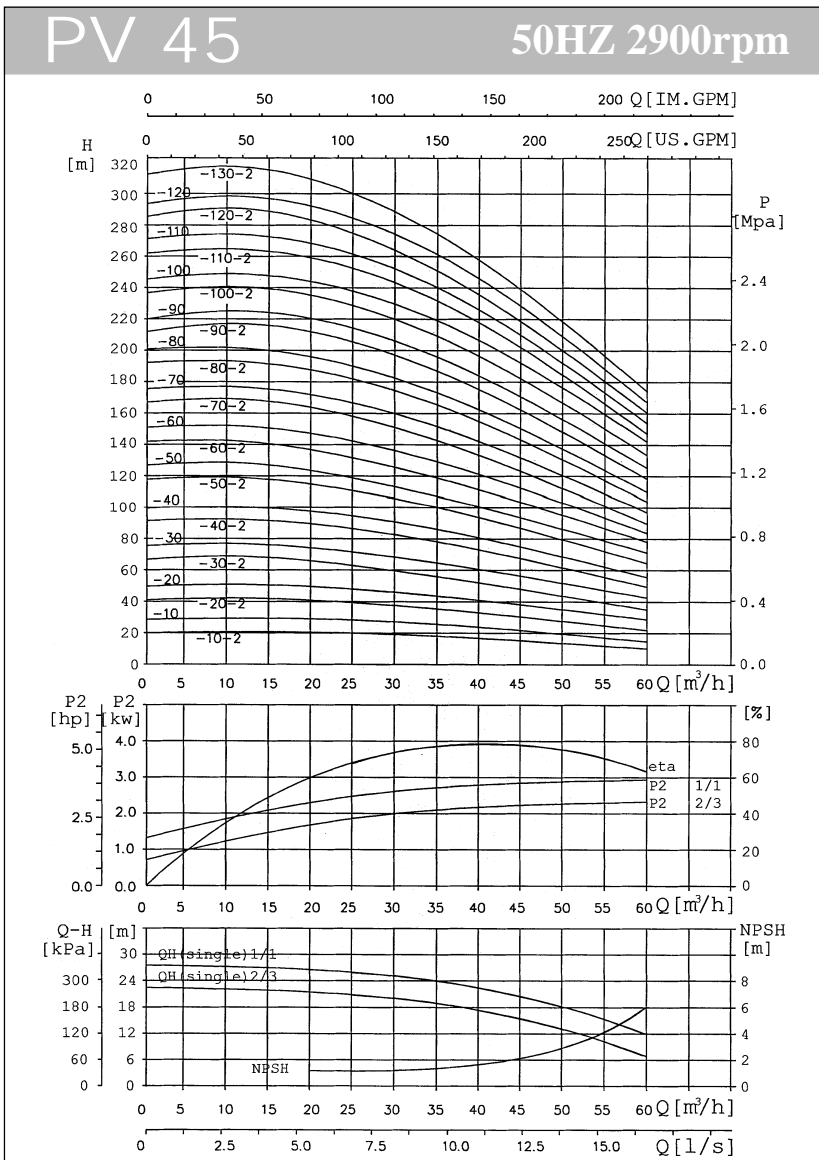
Model	Size (mm)					Weight (Kg)	Motor (Kw)
	B1	B2	B1+B2	D1	D2		
PV16-20	400	290	690	190	155	40	2.2
PV16-30	455	315	770	197	165	50	3.0
PV16-40	500	335	835	230	188	55	4.0
PV16-50	565	430	995	260	208	70	5.5
PV16-60	610	430	1040	260	208	75	5.5
PV16-70	655	430	1085	260	208	80	7.5
PV16-80	700	430	1130	260	208	80	7.5
PV16-90	760	430	1190	260	208	110	7.5
PV16-100	820	490	1310	330	255	140	11
PV16-110	865	490	1355	330	255	140	11
PV16-120	910	490	1400	330	255	145	11
PV16-130	955	490	1445	330	255	150	11
PV16-140	1000	490	1490	330	255	160	15
PV16-150	1045	490	1535	330	255	160	15
PV16-160	1090	490	1580	330	255	165	15



**Dimension and Weight**

Model	Size (mm)					Weight (Kg)	Motor (Kw)
	B1	B2	B1+B2	D1	D2		
PV32-20	575	335	910	230	188	84	4.0
PV32-30	645	430	1075	260	208	93	5.5
PV32-40	715	430	1145	260	208	102	7.5
PV32-50	890	490	1380	330	255	172	11
PV32-60	960	490	1450	330	255	176	11
PV32-70	1030	490	1520	330	255	188	15
PV32-80	1100	490	1590	330	255	192	15
PV32-90	1170	550	1720	330	255	218	18.5
PV32-100	1240	550	1790	330	255	222	18.5
PV32-110	1310	590	1900	360	285	259	22
PV32-120	1380	590	1970	360	285	263	22
PV32-130	1450	660	2110	400	310	327	30
PV32-140	1520	660	2180	400	310	331	30

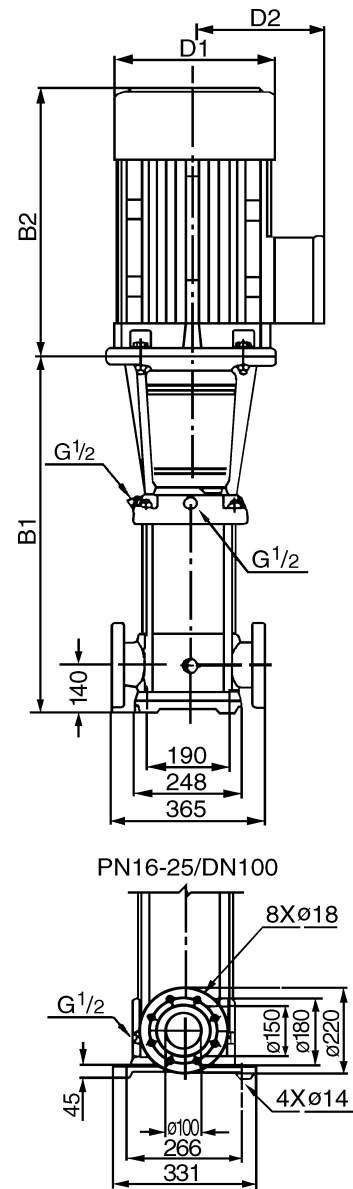
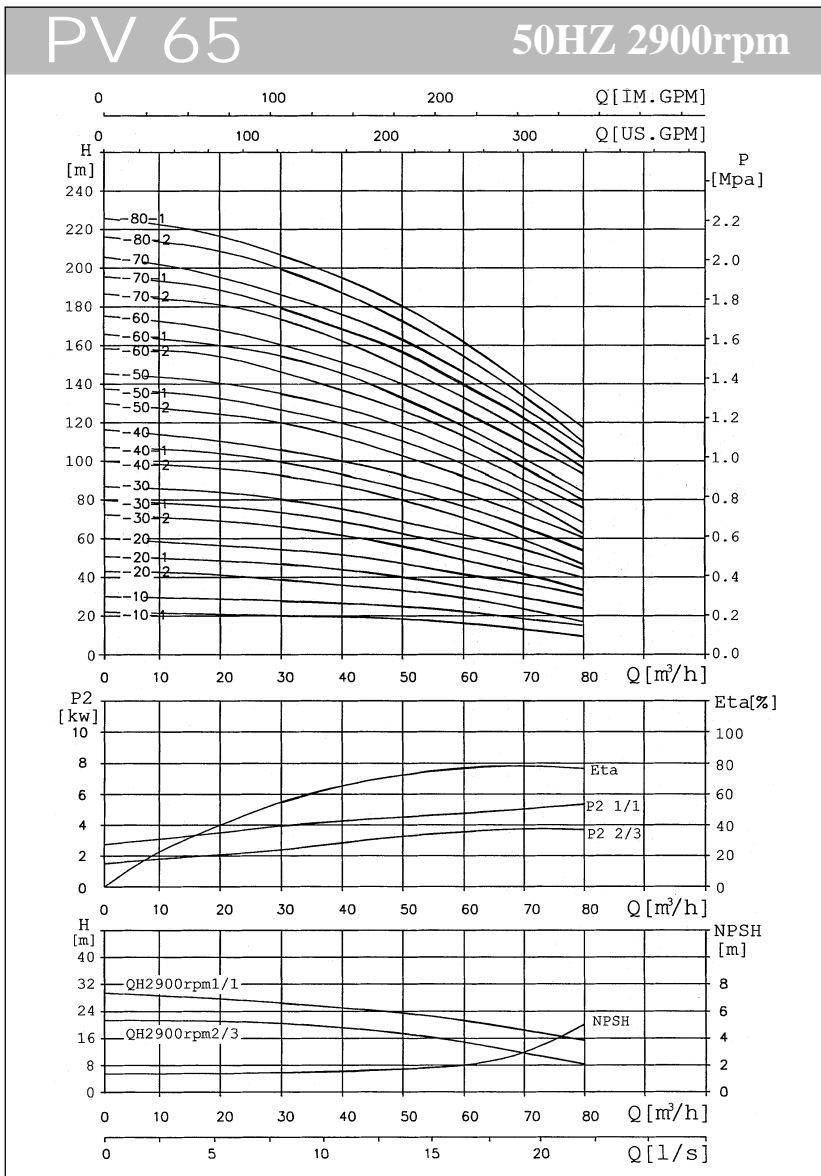
# PV SERIES



### Dimension and Weight

Model	Size (mm)					Weight (Kg)	Motor (Kw)
	B1	B2	B1+B2	D1	D2		
PV45-10-2	561	315	876	197	165	86	3.0
PV45-10	561	335	896	230	188	92	4.0
PV45-20-2	641	430	1071	260	208	102	5.5
PV45-20	641	430	1071	260	208	107	7.5
PV45-30-2	826	490	1316	330	255	175	11
PV45-30	826	490	1316	330	255	175	11
PV45-40-2	906	490	1396	330	255	187	15
PV45-40	906	490	1396	330	255	187	15
PV45-50-2	986	550	1536	330	255	208	18.5
PV45-50	986	550	1536	330	255	208	18.5
PV45-60-2	1066	590	1656	360	285	251	22
PV45-60	1066	590	1656	360	285	251	22
PV45-70-2	1146	660	1806	400	310	315	30
PV45-70	1146	660	1806	400	310	315	30
PV45-80-2	1226	660	1886	400	310	319	30
PV45-80	1226	660	1886	400	310	319	30
PV45-90-2	1306	660	1966	400	310	323	30
PV45-90	1306	660	1966	400	310	343	37
PV45-100-2	1386	660	2046	400	310	347	37
PV45-100	1386	660	2046	400	310	347	37
PV45-110-2	1466	700	2166	450	345	413	45
PV45-110	1466	700	2166	450	345	413	45
PV45-120-2	1546	700	2246	450	345	417	45
PV45-120	1546	700	2246	450	345	417	45
PV45-130-2	1626	700	2326	450	345	421	45

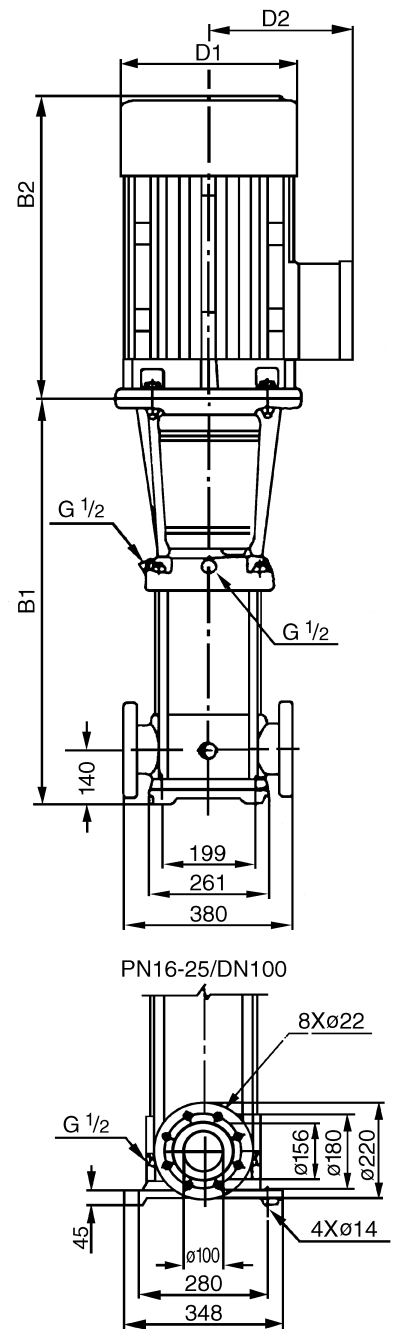
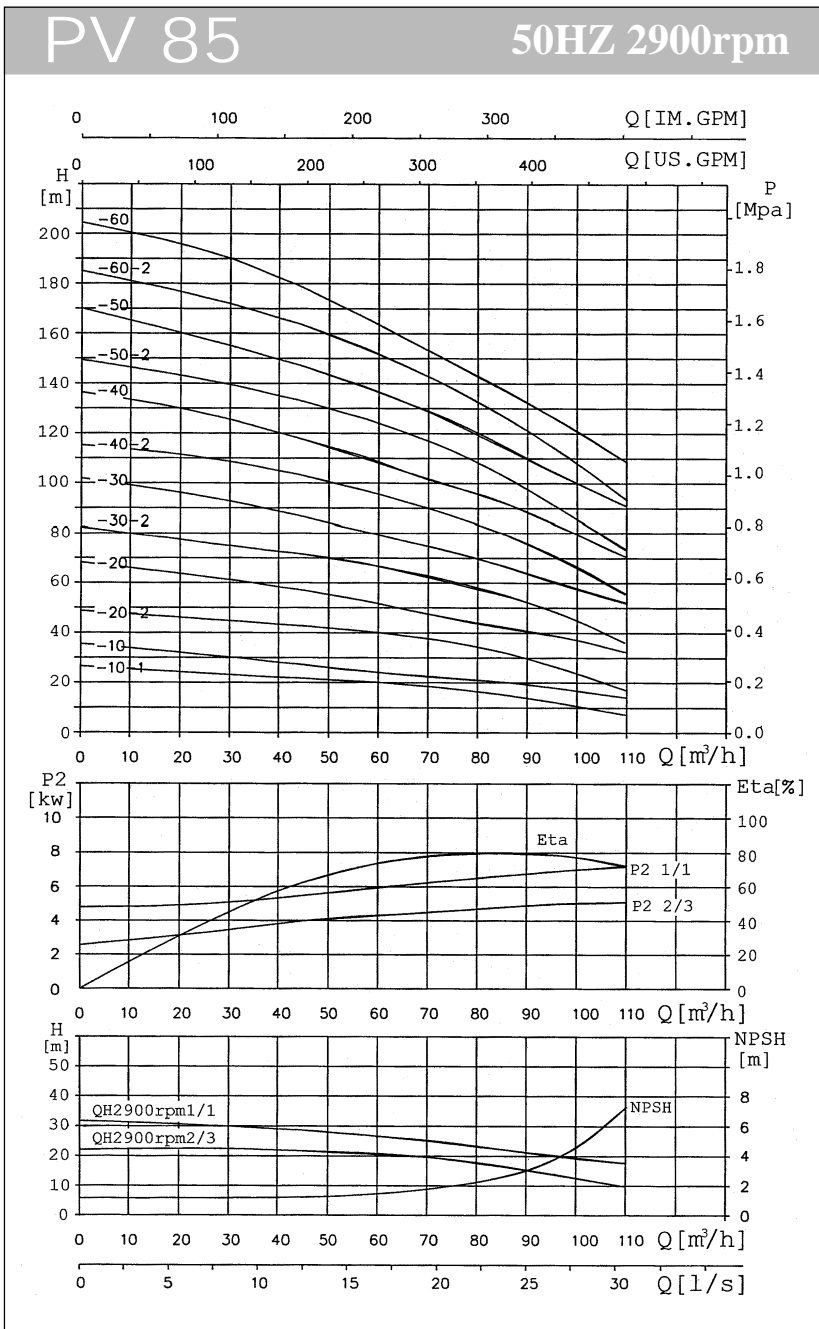




**Dimension and Weight**

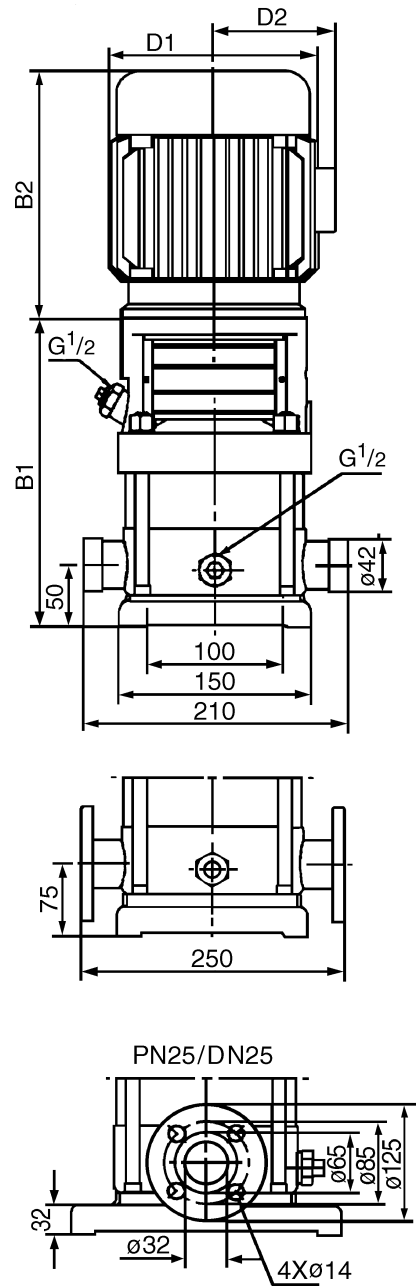
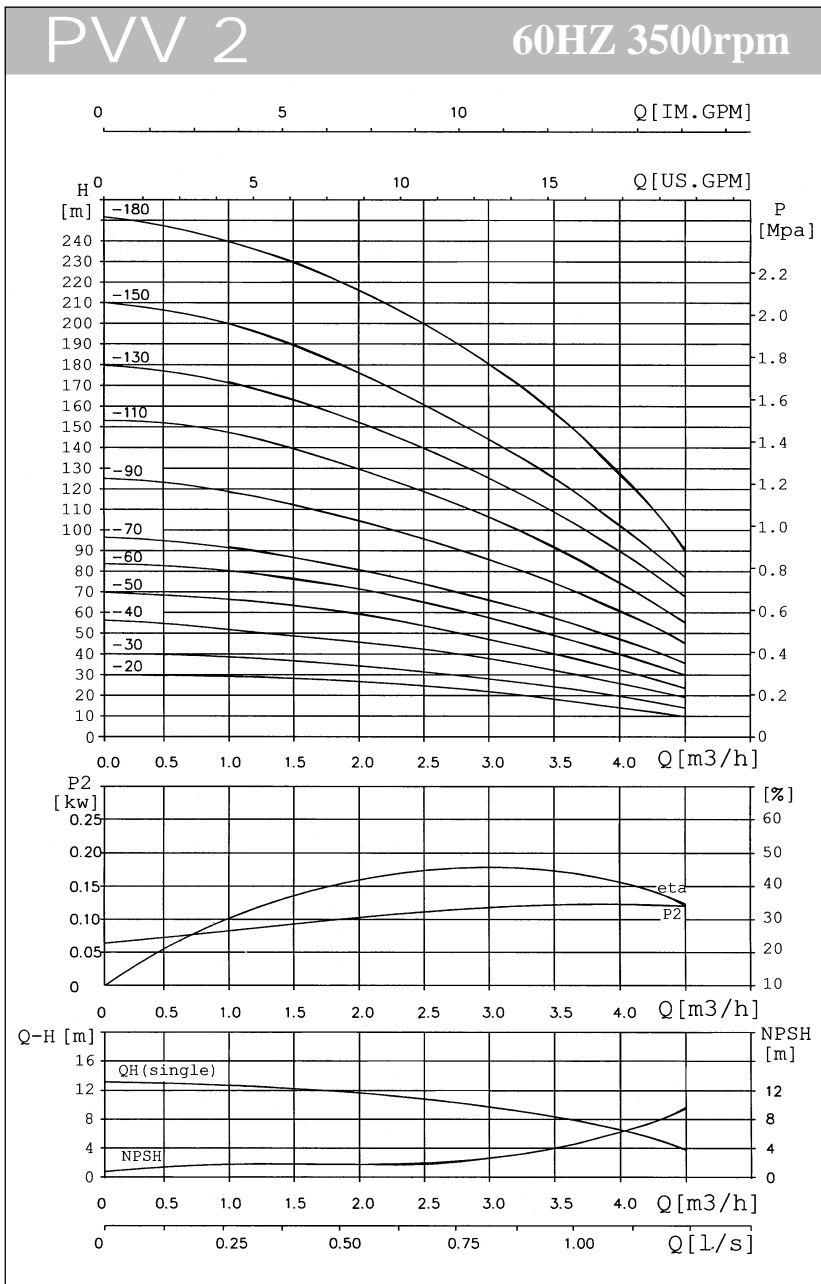
Model	Size (mm)					Weight (Kg)	Motor (Kw)
	B1	B2	B1+B2	D1	D2		
PV65-10-1	561	335	896	230	188	105	4.0
PV65-10	561	430	911	260	208	110	5.5
PV65-20-2	644	430	1074	260	208	120	7.5
PV65-20-1	754	490	1244	330	255	155	11
PV65-20	754	490	1244	330	255	155	11
PV65-30-2	836	490	1326	330	255	195	15
PV65-30-1	836	490	1326	330	255	195	15
PV65-30	836	550	1386	330	255	205	18.5
PV65-40-2	919	550	1469	330	255	208	18.5
PV65-40-1	919	590	1509	360	285	260	22
PV65-40	919	590	1509	360	285	260	22
PV65-50-2	1001	660	1661	400	310	345	30
PV65-50-1	1001	660	1661	400	310	345	30
PV65-50	1001	660	1661	400	310	345	30
PV65-60-2	1084	660	1744	400	310	350	30
PV65-60-1	1084	660	1744	400	310	370	37
PV65-60	1084	660	1744	400	310	370	37
PV65-70-2	1166	660	1826	400	310	375	37
PV65-70-1	1166	660	1826	400	310	375	37
PV65-70	1166	710	1876	400	310	435	45
PV65-80-2	1248	710	1958	460	340	440	45
PV65-80-1	1248	710	1958	460	340	440	45

# PV SERIES



### Dimension and Weight

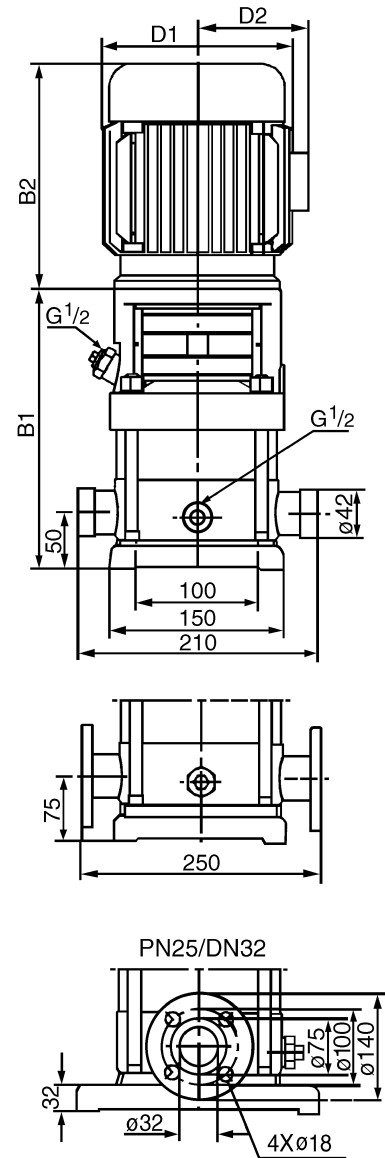
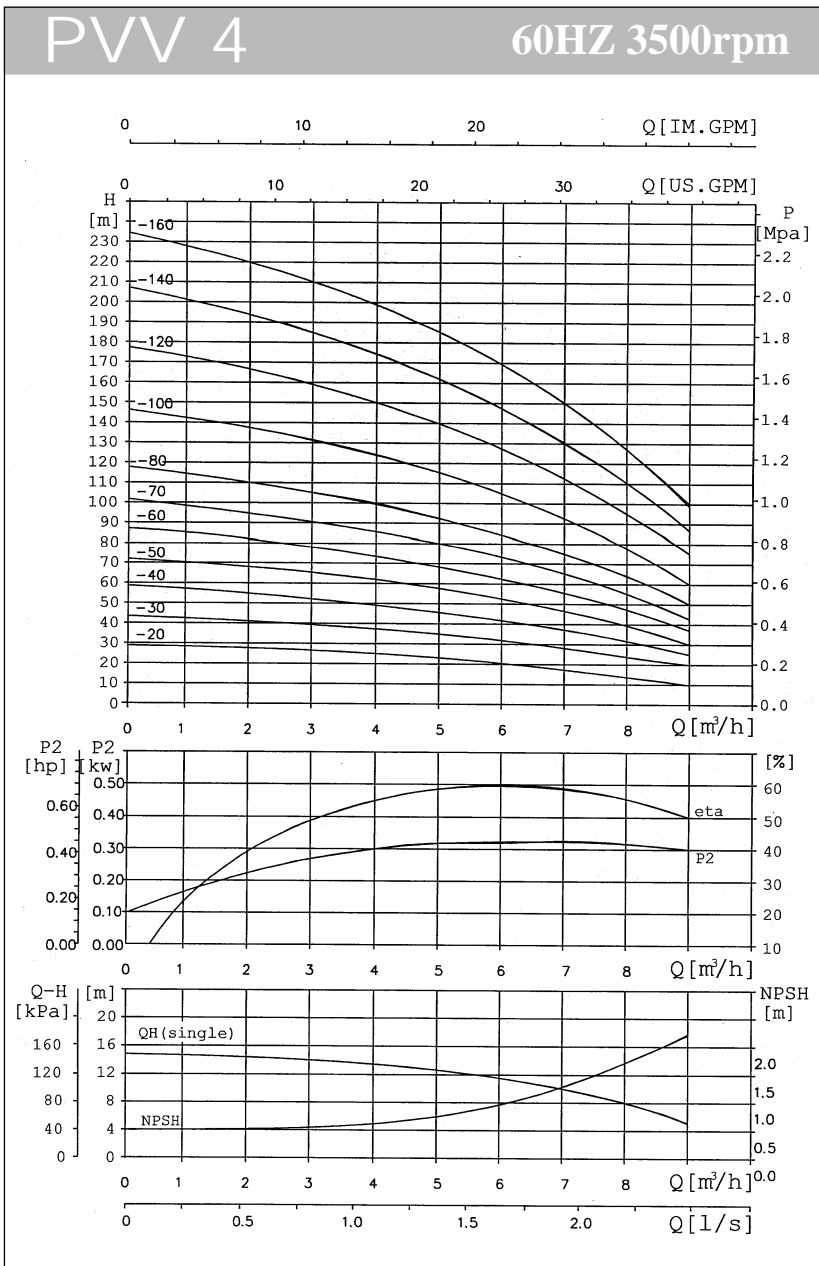
Model	Size (mm)					Weight (Kg)	Motor (Kw)
	B1	B2	B1+B2	D1	D2		
PV85-10-1	571	430	1001	260	208	120	5.5
PV85-10	571	430	1001	260	208	122	7.5
PV85-20-2	773	490	1263	330	255	165	11
PV85-20	773	490	1263	330	255	198	15
PV85-30-2	865	550	1415	330	255	212	18.5
PV85-30	865	590	1455	360	285	265	22
PV85-40-2	957	660	1617	400	310	348	30
PV85-40	957	660	1617	400	310	348	30
PV85-50-2	1049	660	1709	400	310	375	37
PV85-50	1049	660	1709	400	310	375	37
PV85-60-2	1141	710	1851	460	340	438	45
PV85-60	1141	710	1851	460	340	438	45



**Dimension and Weight**

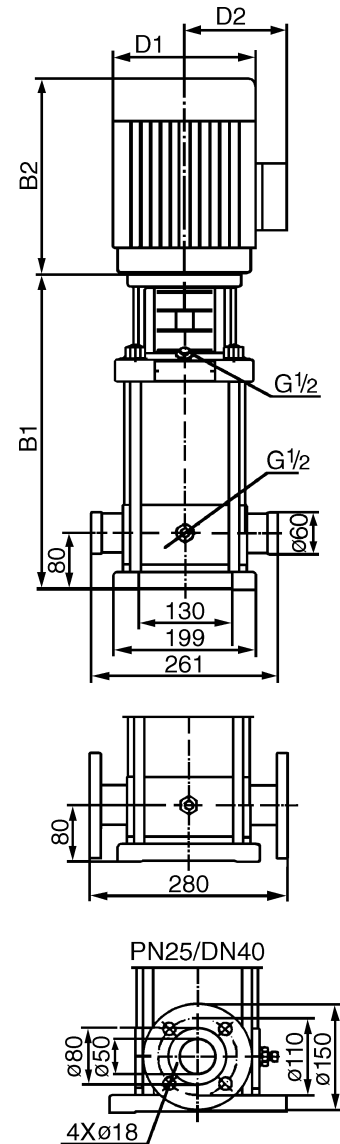
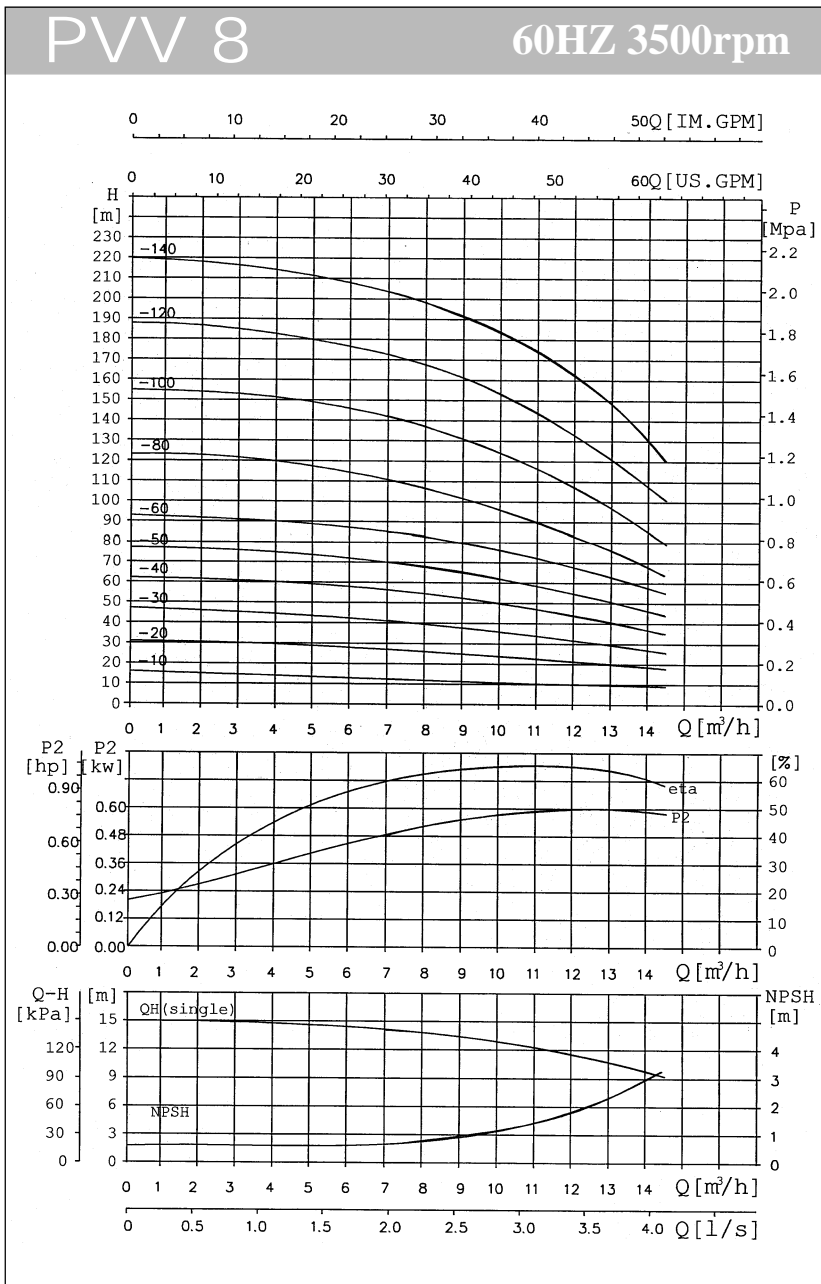
Model	Size (mm)					Weight (Kg)	Motor (Kw)
	B1	B2	B1+B2	D1	D2		
PVV2-20	220	225	445	148	117	20	0.55
PVV2-30	238	225	463	170	142	20	0.75
PVV2-40	256	245	501	170	142	25	1.1
PVV2-50	274	245	519	170	142	25	1.1
PVV2-60	297	245	542	170	142	25	1.1
PVV2-70	325	245	570	170	155	30	1.5
PVV2-90	361	265	626	190	155	35	2.2
PVV2-110	397	265	662	190	155	35	2.2
PVV2-130	450	290	740	197	165	40	3
PVV2-150	486	290	776	197	165	40	3
PVV2-180	540	325	865	230	165	45	4

# PV SERIES



### Dimension and Weight

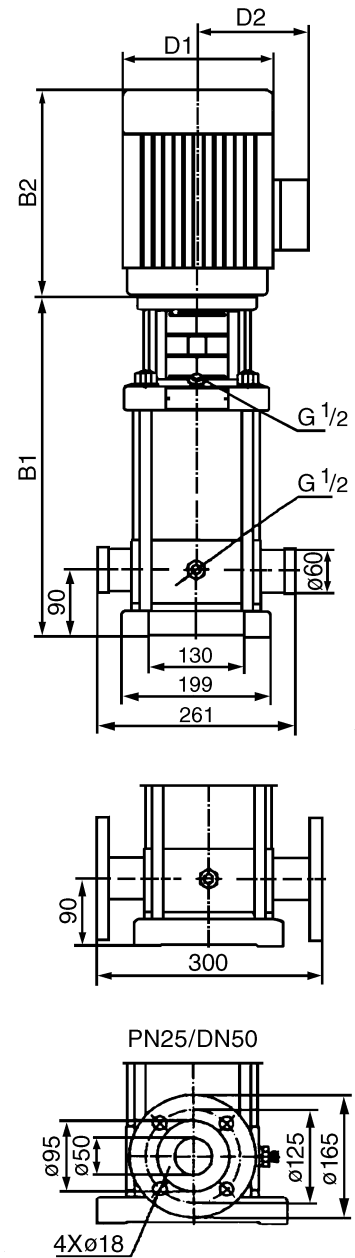
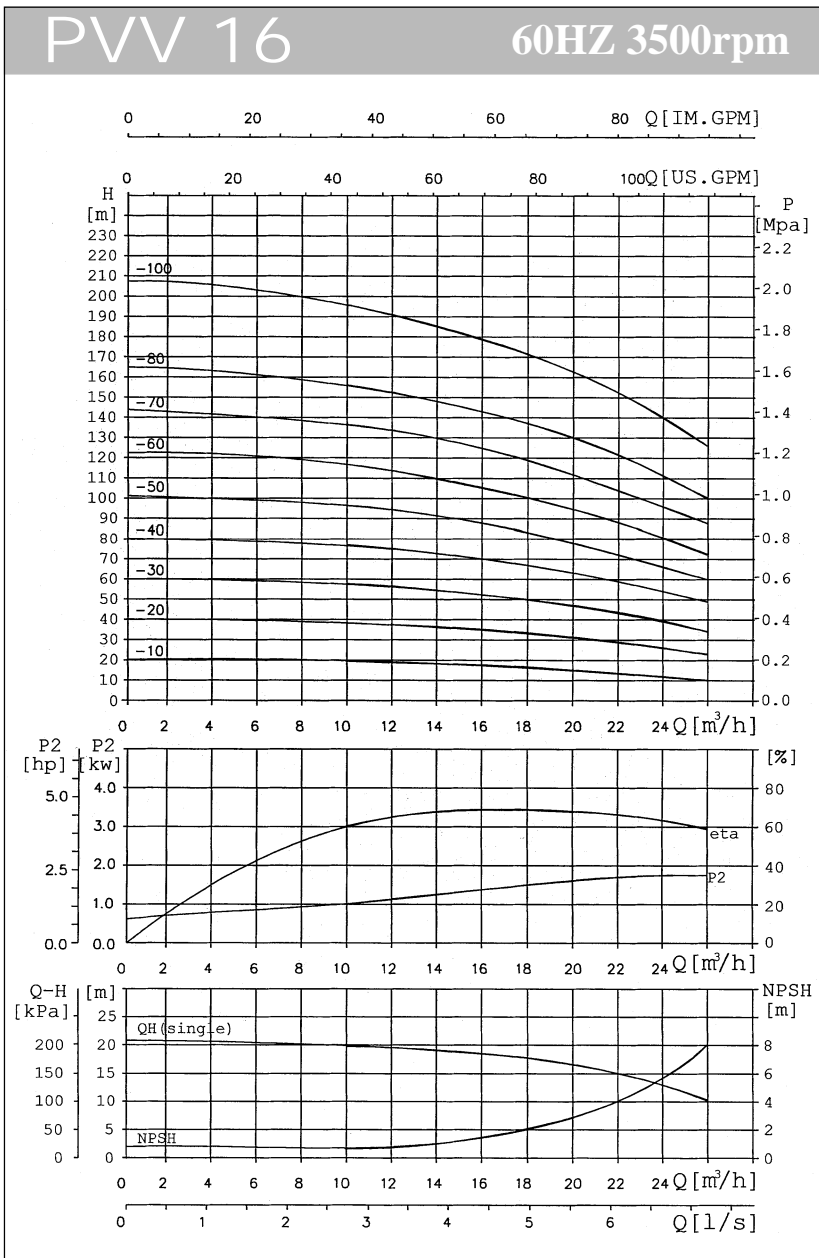
Model	Size (mm)					Weight (Kg)	Motor (Kw)
	B1	B2	B1+B2	D1	D2		
PVV4-20	241	225	466	170	142	20	0.75
PVV4-30	271	245	516	170	142	20	1.1
PVV4-40	312	245	557	190	155	25	1.5
PVV4-50	340	265	605	190	155	30	2.2
PVV4-60	367	265	632	190	155	35	2.2
PVV4-70	402	290	692	197	165	40	3
PVV4-80	429	290	719	197	165	40	3
PVV4-100	482	325	807	230	188	45	4
PVV4-120	536	325	861	230	188	45	4
PVV4-140	611	380	991	260	208	70	5.5
PVV4-160	665	380	1045	260	208	70	5.5



**Dimension and Weight**

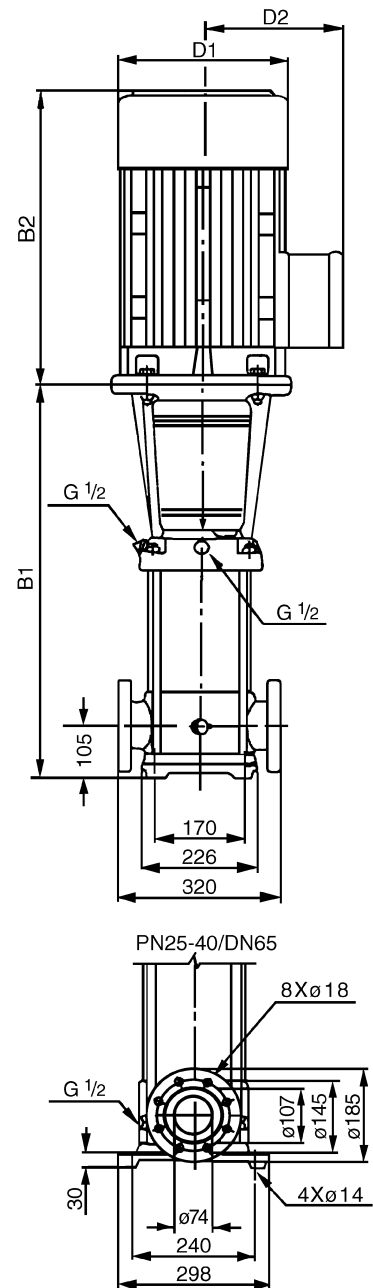
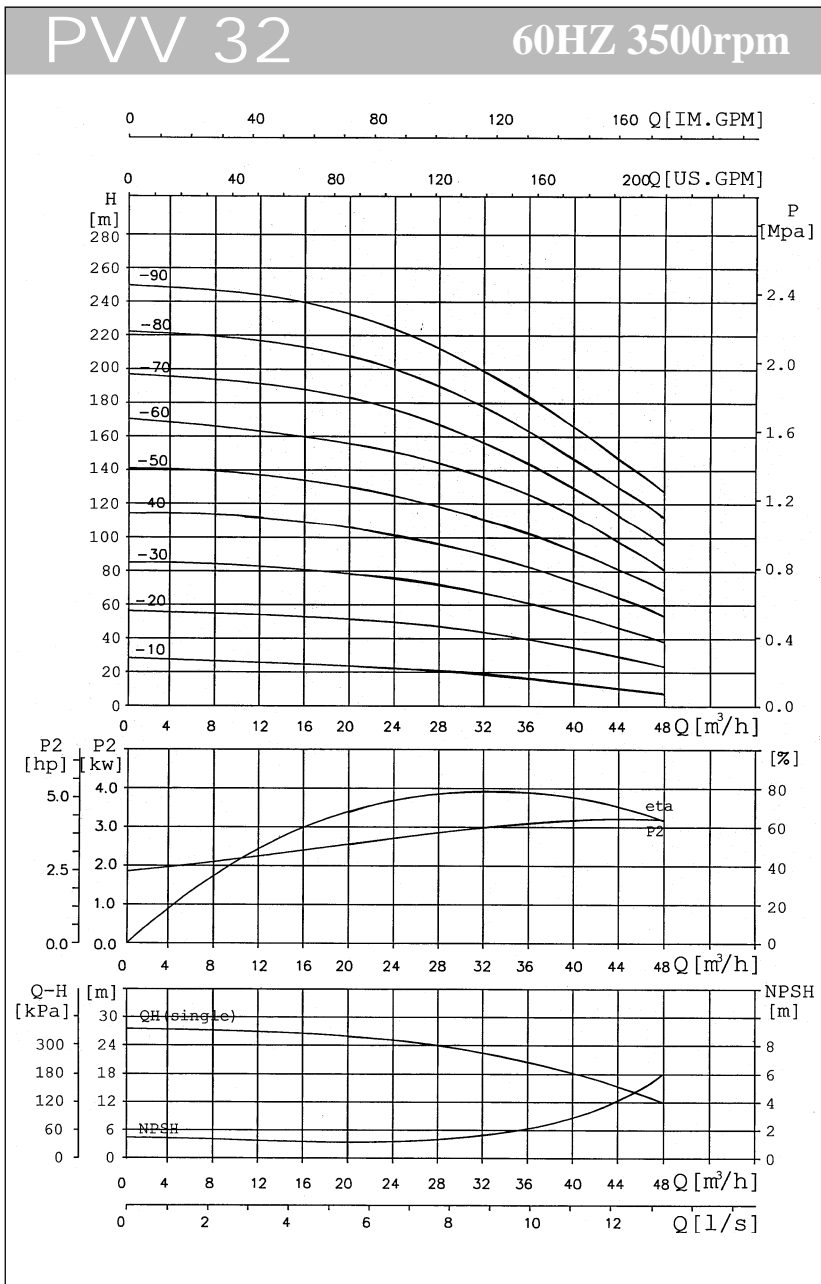
Model	Size (mm)					Weight (Kg)	Motor (Kw)
	B1	B2	B1+B2	D1	D2		
PVV8-10	350	225	575	170	142	25	0.75
PVV8-20	360	245	605	190	155	30	1.5
PVV8-30	390	265	655	192	155	35	2.2
PVV8-40	430	290	720	197	165	40	3
PVV8-50	460	290	750	197	165	45	3
PVV8-60	490	325	815	230	188	50	4
PVV8-80	570	380	950	230	188	75	5.5
PVV8-100	630	380	1010	260	208	85	7.5
PVV8-120	690	380	1070	260	208	85	7.5
PVV8-140	780	490	1270	330	255	130	11

# PV SERIES



### Dimension and Weight

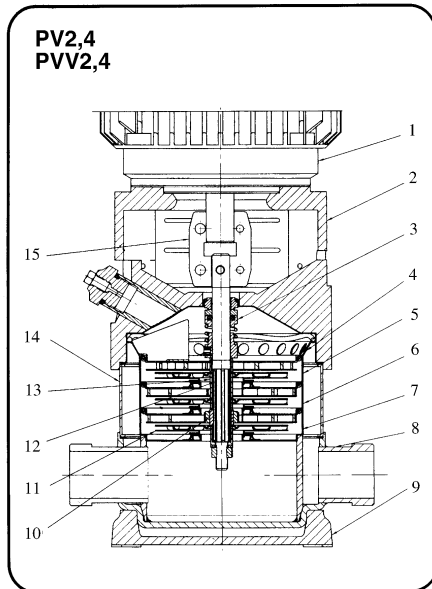
Model	Size (mm)					Weight (Kg)	Motor (Kw)
	B1	B2	B1+B2	D1	D2		
PVV16-10	400	290	690	190	155	40	2.2
PVV16-20	410	325	735	230	188	50	4
PVV16-30	475	430	905	260	208	70	5.5
PVV16-40	520	430	950	260	208	80	7.5
PVV16-50	595	490	1085	330	255	140	11
PVV16-60	640	490	1130	330	255	145	11
PVV16-70	685	490	1175	330	255	160	15
PVV16-80	730	490	1220	330	255	160	15
PVV16-100	820	550	1370	330	255	190	18.5



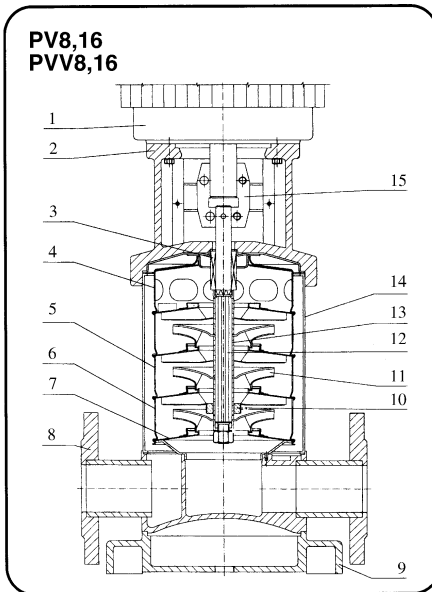
### Dimension and Weight

Model	Size (mm)					Weight (Kg)	Motor (Kw)
	B1	B2	B1+B2	D1	D2		
PVV32-10	505	335	840	230	188	95	4.0
PVV32-20	575	430	1005	260	208	115	7.5
PVV32-30	750	490	1240	330	255	175	11
PVV32-40	820	490	1310	330	255	210	15
PVV32-50	890	550	1440	330	255	240	18.5
PVV32-60	960	550	1510	330	255	250	18.5
PVV32-70	1030	590	1620	360	285	285	22
PVV32-80	1100	660	1760	400	310	330	30
PVV32-90	1170	660	1830	400	310	340	30

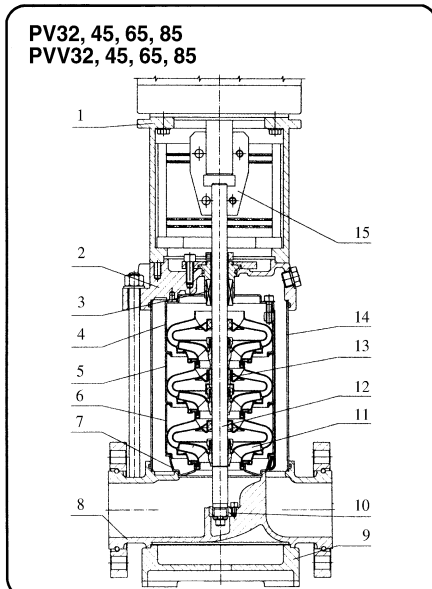
**General Arrangement Drawing**



Item No	Name	Material	AISI/ASTM
1	Electric motor		
2	Motor base	Cast iron	ASTM25B
3	Mechanical seal	Tungsten Carbide/Graphite	
4	Discharge diffuser	Stainless steel	304
5	Support diffuser	Stainless steel	304
6	Diffuser	Stainless steel	304
7	Inducer	Stainless steel	304
8	Suction & discharge head	Stainless steel	304
9	Pump base	Cast iron	ASTM25B
10	Bearing	Tungsten carbide	
11	Impeller	Stainless steel	304
12	Shaft	Stainless steel	304
13	Sleeve	Stainless steel	304
14	Cylinder	Stainless steel	304
15	Coupling	Alloy	
	Rubber parts	FPM	



Item No	Name	Material	AISI/ASTM
1	Electric motor		
2	Motor base	Cast iron	ASTM25B
3	Mechanical seal	Tungsten Carbide/Graphite	
4	Discharge diffuser	Stainless steel	304
5	Support diffuser	Stainless steel	304
6	Diffuser	Stainless steel	304
7	Inducer	Stainless steel	304
8	Suction & discharge head	Stainless steel	304
9	Pump base	Cast iron	ASTM25B
10	Bearing	Tungsten carbide	
11	Impeller	Stainless steel	304
12	Shaft	Stainless steel	304
13	Sleeve	Stainless steel	304
14	Cylinder	Stainless steel	304
15	Coupling	Alloy	
	Rubber parts	FPM	

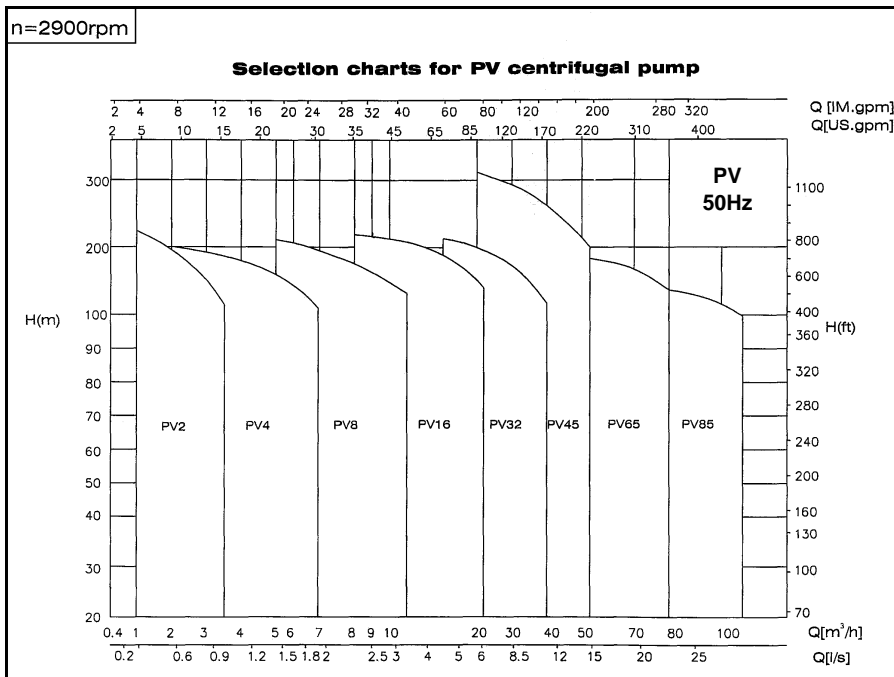


Item No	Name	Material	AISI/ASTM
1	Motor base	Cast iron	ASTM25B
2	Pump head	Cast iron	ASTM25B
3	Mechanical seal	Tungsten Carbide/Graphite	
4	Discharge diffuser	Stainless steel	304
5	Support diffuser	Stainless steel	304
6	Diffuser	Stainless steel	304
7	Inducer	Stainless steel	304
8	Suction & discharge head	Stainless steel or cast iron	304 or ASTM25B
9	Pump base	Cast iron	ASTM25B
10	Bearing	Tungsten carbide	
11	Impeller	Stainless steel	304
12	Shaft	Stainless steel	304
13	Sleeve	Stainless steel	304
14	Cylinder	Stainless steel	304
15	Coupling	Carbon steel	
	Rubber parts	FPM	

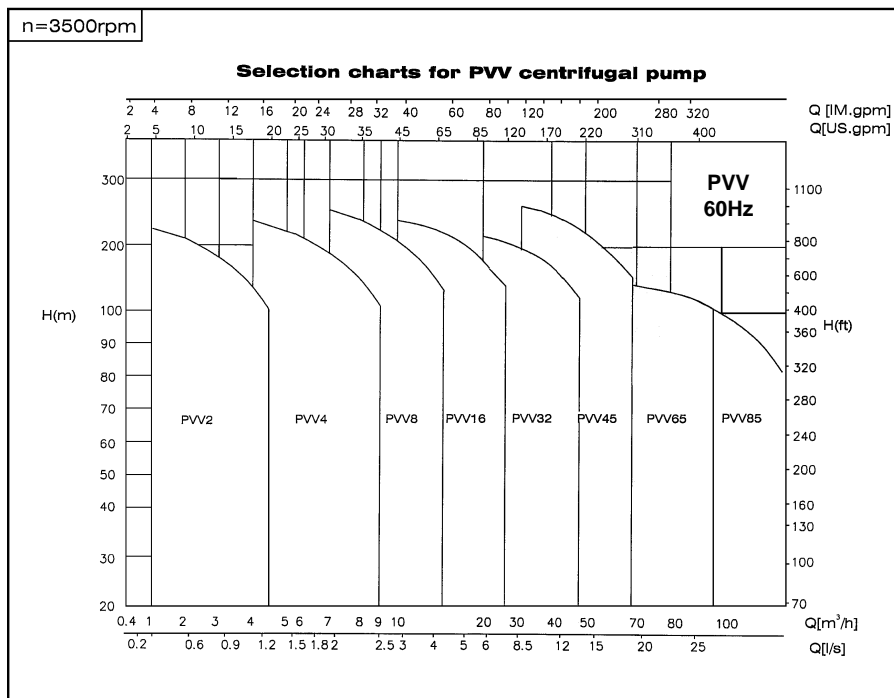


**PERFORMANCE CURVES:**

**50HZ 2900 rpm**



**60HZ 3500 rpm**



**PARAGON PUMP COMPANY, LLC**  
 18102 Courtney Breeze Drive  
 Tampa, Florida, 33647, USA  
 Tel : (813) 994-3356  
 Fax : (813) 994-1237

**PARAGON PUMP (ASIA) PTE LTD**  
 37 Kallang Pudding Road #08-08  
 Tong Lee Building Block B  
 Singapore 349315  
 Tel : (65) 6841-2818  
 Fax : (65) 6841-5988