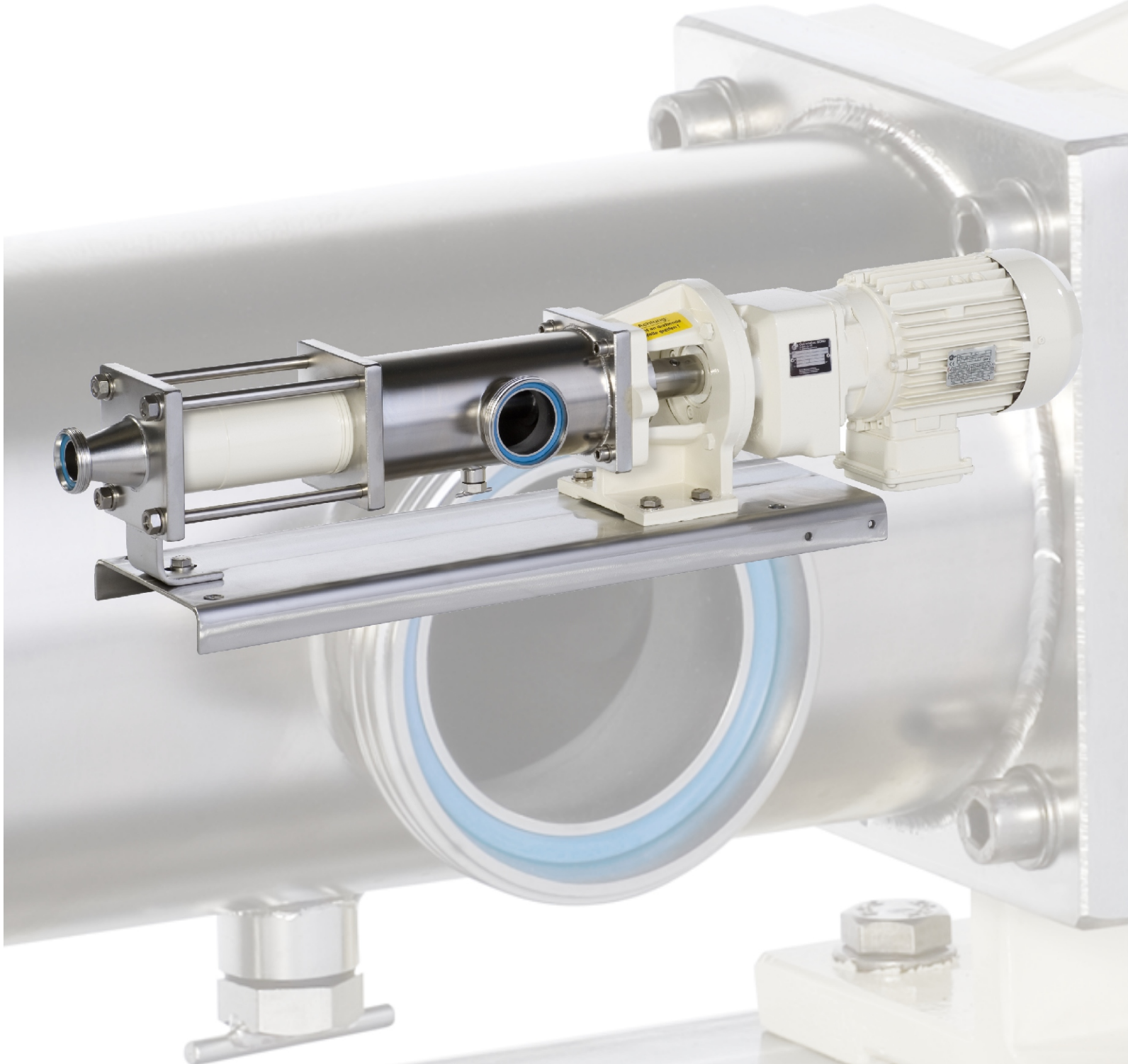
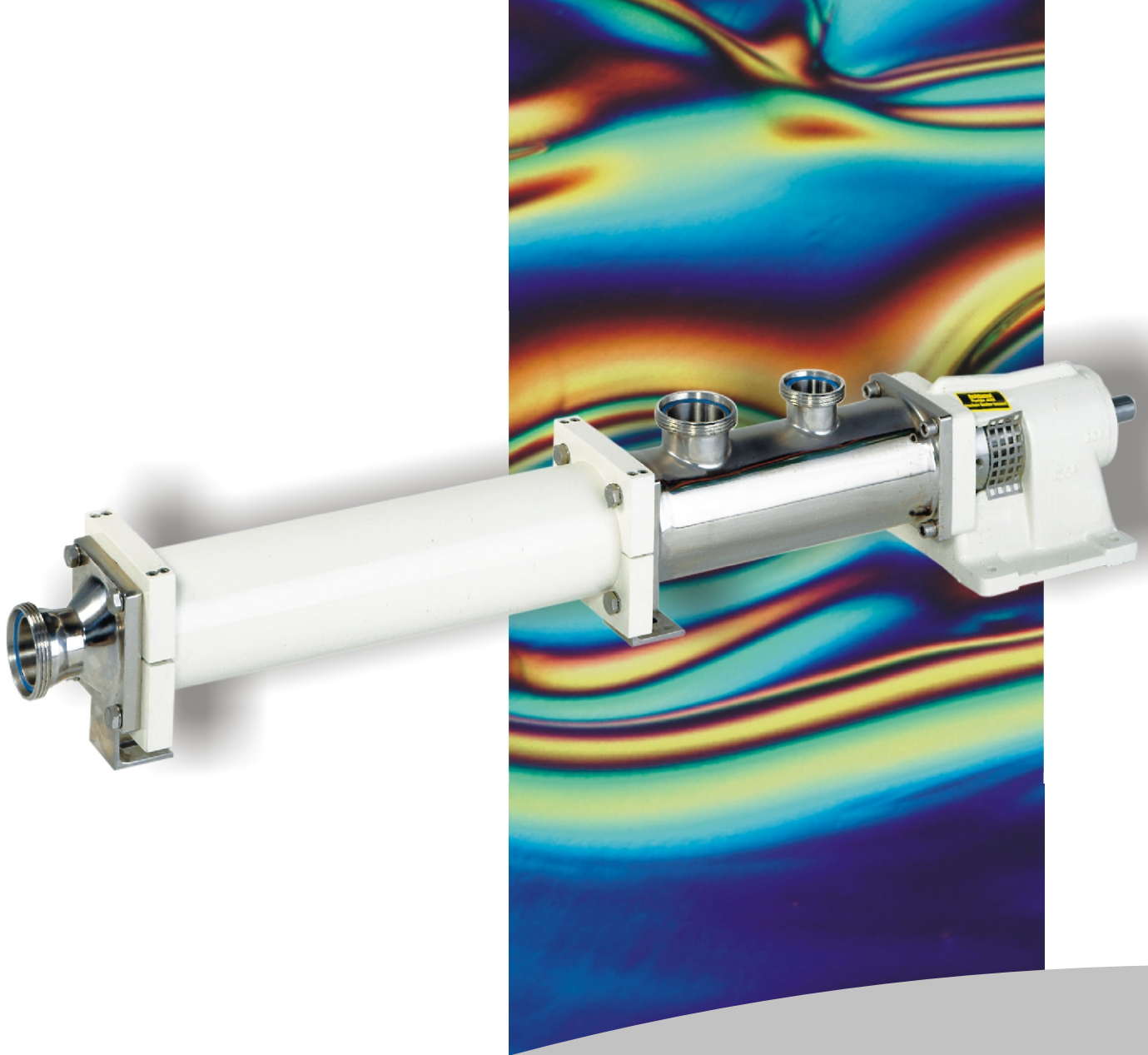


Excentric screw pumps

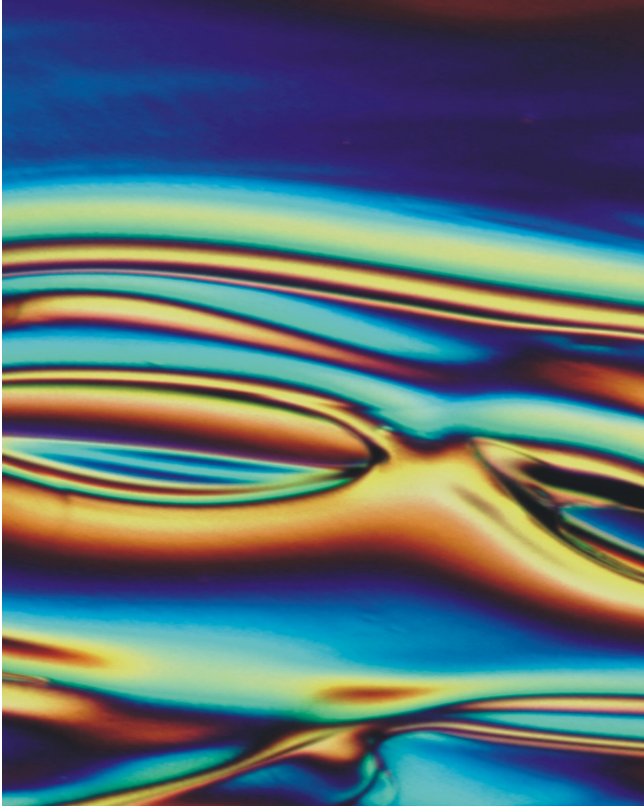




Eccentric screw pumps

Pomac excentric screw pumps are designed to achieve maximum pump performance combined with minimal product damage. Specific attention is paid to the geometry of the rotor and the stator. The pumps are suitable for

working pressures up to 24 bar. The application range comprises a capacity of up to 200 m³/h. The pumps are completely made of stainless steel. The pump is easily cleaned resulting in less maintenance time.



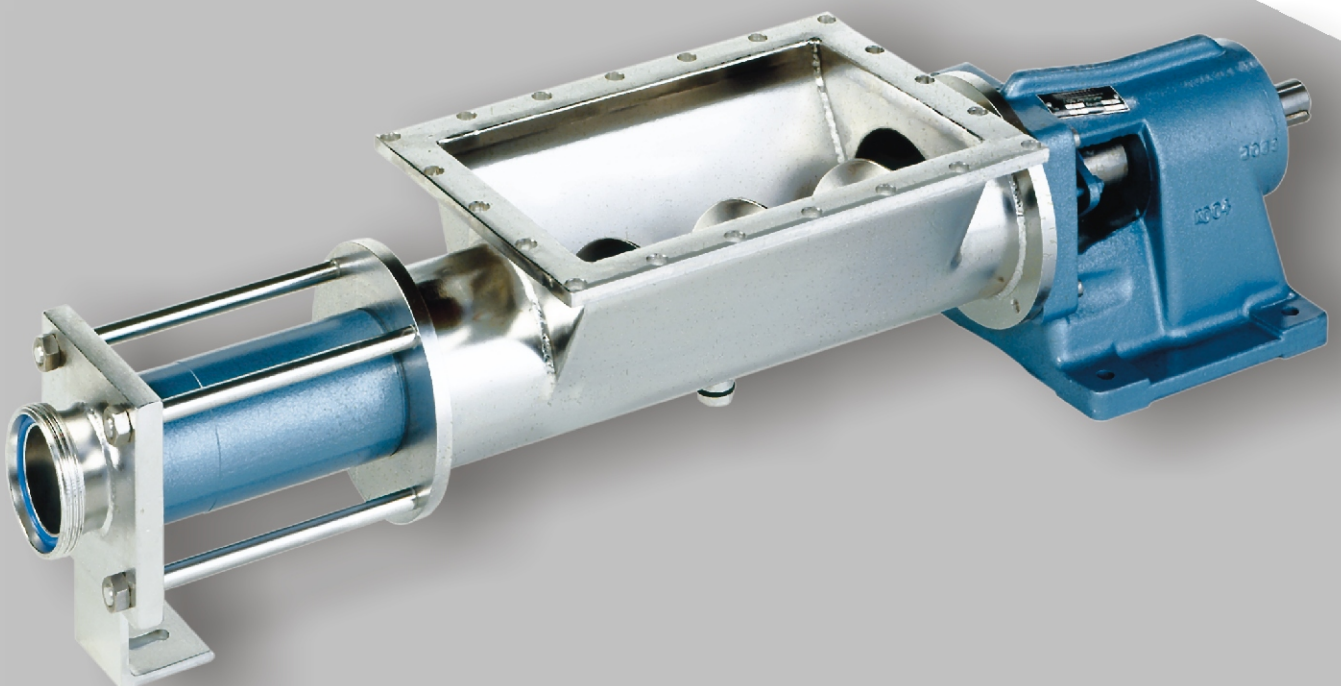
Applications

It's sphere of application comprises liquids with low and high viscosities.

These can also be encumbered with fibrous or abrasive admixtures as well as with gases.

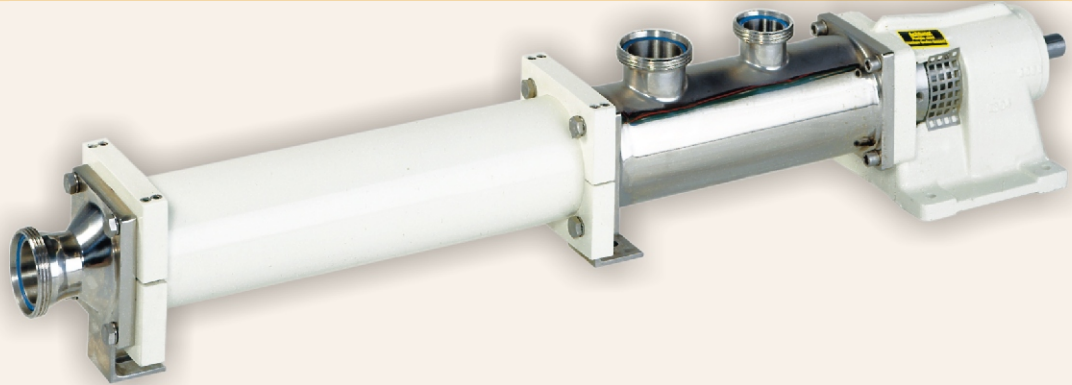
Their sphere of application extends even to those pastes which can be still be shoved through a piping system.

- **The foodstuffs industry**
Apple purée, ice-cream, sausage mixture, honey, mustard, tomato pulp, mayonnaise, cheese, jams, concentrates, essences, curds, fats, oils, jellies, chocolate moss, sugar solutions, molasses, milk of lime, meat extracts, rubbish, sewage, glue, broths, fish oil, fish liver, vegetables and potato fodder
- **The beverages industry**
Wines, beers, spirits, liqueurs, yeast, syrup, herbs, stone fruit mash, pomaceous fruit mash and grape mash, thick juice, draff, milk, whey, cream, yoghurt, cheese, desserts, and curds
- **The pharmaceutical industry**
Dispersions, suspensions, emulsions, pastes, creams, fangos, enzymes, blood and lecithin
- **The cosmetic industry**
Skin creams, concentrates, hair shampoos, essences, soaps, hand washing pastes, bathing additional agents, lotions, gelatines, and oils
- **The varnish and paint industry**
Dispersion colours, dispersion points, varnish bonds, pastes, rough plaster paint, water soluble varnishes, acrylic paints, resins, plasters, colour pastes, bonding agents, tile bonding agents, knifing filler, and glazier's putty



Construction series SR

Sanitary design, rapid cleaning design, CIP design, SIP design



Characteristics:

- Rapid dismantling possibilities
- Stainless steel welded construction, AISI 304, AISI 316 L, AISI 316 TI
- Electrolytic hand polished surface up to $Ra < 0,2\text{mm}$
- CIP and SIP cleaning connections, enabling this construction series to meet the highest hygienic demands of the foodstuffs and pharmaceutical industries
- Construction according to the US 3-A Sanitary Standard
- Rubber qualities with the FDA approval
- Open polished knuckle joints
- Mechanical seals available in most common materials combinations
- Conveyance from 0.05 to 100 cbm/h
- Conveyance pressures up to 24 bar

Construction series M

The construction series M eccentric screw pumps make ideal universal pumps for wineries, fruit juice pressing houses, breweries and distilleries. Entire stone fruits, debarred and non-debarred grape mashes, yeast, draff, wine, cider, and concentrates are propelled along easily.



Characteristics:

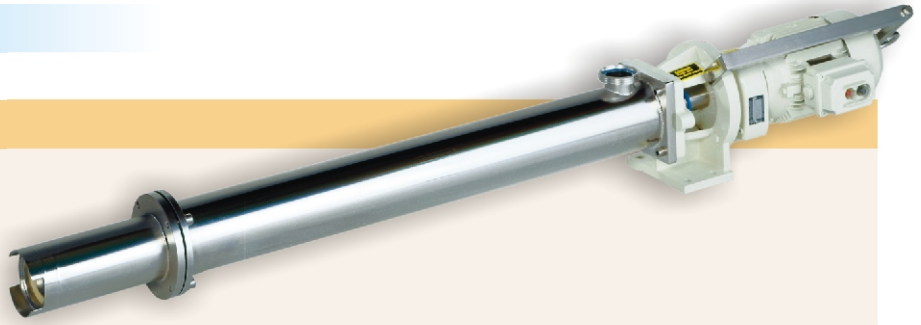
- Particularly suitable for drawing off and for filtration
- Great self-suction capacity up to 6 mwc
- Easy to clean, no dirty corners or dead space clearance volumes
- Compact, mobile construction shape
- Vibrationless operation with a special cavity rotor
- All the parts that come into contact with the conveying substance are made of stainless steel AISI 304, AISI 316 L, or AISI 316 TI
- All the pumps are fitted with pole changer motor safeguard switches (2 rotary frequencies, 2 rotation directions)

Construction series TP

Barrel pumps

Characteristics:

- Conveys amounts of up to 60 cbm/h
- Viscosities up to 200,000 mPas
- Submergible depths up to 5000 mm
- Manometric lift up to 24 bar
- For the conveyance of high viscosity solutions from tanks, barrels and excavation sites
- Tank lid fastener
- Vertical wall fasteners
- Materials stainless steel AISI 304, AISI 316 L or AISI 316 TI



Construction series F and FT

The construction series F is the universal one for all branches of industry.

The pumps of construction series FT have large funnel openings and feeder screws for the conveyance of non-liquid products.

Characteristics series F:

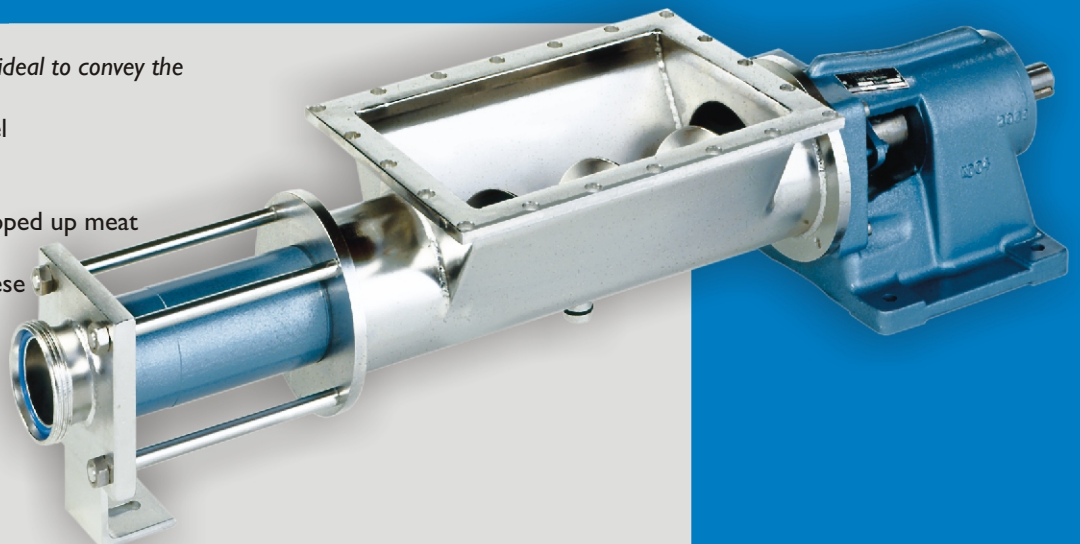
- Conveys amounts up to 200 cbm/h
- Conveyance pressure up to 24 bar
- Materials stainless steel AISI 304, AISI 316 L or AISI 316 TI
- Rotors (material AISI 304, AISI 316), alloy chrome steel hardened; hollow tube rotors for low vibration (AISI 304, AISI 316), hard chrome sheeting
- Stators out of different natural rubber qualities and synthetic rubber qualities like neoprene, EPDM, nitrile, nitrile light, CIP and SIP resistant qualities, PTFE

Characteristics series FT:

- Conveys amounts up to 150 cbm/h
- Conveyance pressure up to 24 bar
- Modification to the funnel, feed screws, conveyors and the mixing tanks
- The feeding screws have diameters of up to 300 cm

The construction series FT is ideal to convey the following for example:

- Potato and vegetable peel
- Entire stone fruits
- Entire pears
- Sausage for broiling, chopped up meat
- Chunks of cheese
- Soft cheese, cottage cheese
- Marzipan
- Coconut butter in cubes
- Grope mash
- Fruit and vegetable mash
- Dehydrated more
- Noodle dough
- Sugar mosses

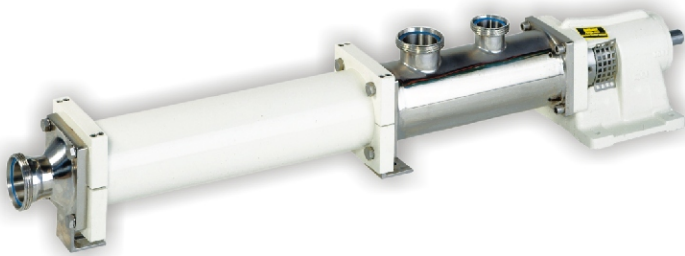


Q [m³/h]	pump/stages	[bar]	0.1		0.15		0.25		0.5		0.75		1.0		1.5		2.0		2.5		3.0		3.5		4.0		5.0		7.5		10		12.5		15		20								
			l/min	kW	l/min	kW	l/min	kW	l/min	kW	l/min	kW	l/min	kW	l/min	kW	l/min	kW	l/min	kW	l/min	kW	l/min	kW	l/min	kW	l/min	kW	l/min	kW	l/min	kW	l/min	kW	l/min	kW	l/min	kW	l/min	kW					
SP 2/2	1	500	0.12	720	0.12	1150	0.12																																						
	2	570	0.12	790	0.12	1230	0.18																																						
	4	780	0.12	990	0.18	1450	0.25																																						
SP 3/1	1	130	0.12	330	0.18	650	0.25	950	0.25																																				
	2	160	0.12	420	0.18	720	0.25	1040	0.37																																				
	4	210	0.18	580	0.25	810	0.37	1100	0.55																																				
	6	260	0.25	730	0.37	960	0.55	1250	0.55																																				
SP 3/2	4	270	0.25	480	0.25	720	0.55	1000	0.55																																				
	6	320	0.25	500	0.37	750	0.55	1060	0.75																																				
	8	360	0.37	560	0.55	820	0.55	1100	0.75																																				
	12	420	0.55	620	0.55	940	0.75	1220	1.1																																				
SP 4/1	1	110	0.25	170	0.25	310	0.25	480	0.25	630	0.37	950	0.55	1100	0.55	1420	0.75																												
	2	120	0.25	190	0.25	340	0.25	500	0.37	650	0.37	1000	0.55	1220	0.55	1500	0.75																												
	4	130	0.25	200	0.25	360	0.37	510	0.37	670	0.37	1030	0.55	1380	0.75	1570	0.75																												
	6	150	0.25	220	0.37	380	0.37	530	0.37	800	0.55	1100	0.75	1480	0.75	1670	1.1																												
SP 4/2	4	90	0.25	150	0.25	280	0.37	410	0.37	580	0.55	930	0.75	1330	0.75	1630	1.1																												
	6	110	0.37	170	0.37	290	0.37	430	0.55	590	0.55	940	0.75	1340	1.1	1650	1.1																												
	8	130	0.37	190	0.37	310	0.55	440	0.55	600	0.55	960	1.1	1350	1.1	1670	1.5																												
	12	200	0.55	230	0.55	350	0.55	470	0.75	630	0.75	990	1.1	1370	1.5	1700	1.5																												
SP 4/4	8	110	0.55	170	0.55	300	0.55	420	0.75	560	0.75	830	1.1	1100	1.5	1350	1.5																												
	12	130	0.55	210	0.55	340	0.75	450	0.75	600	1.1	860	1.5	1120	1.5	1380	2.2																												
	18	150	0.55	280	0.75	420	0.75	550	1.1	670	1.1	930	1.5	1170	2.2	1420	2.2																												
	24	210	0.75	330	0.75	560	1.1	660	1.5	750	1.5	980	2.2	1230	2.2	1500	3.0																												
SP 45/1	1	130	0.25	200	0.25	280	0.25	370	0.25	550	0.37	730	0.37	910	0.55	1090	0.55	1270	0.55	1400	0.75																								
	2	150	0.25	220	0.25	300	0.25	390	0.37	570	0.37	750	0.55	920	0.55	1110	0.55	1290	0.55	1440	0.75																								
	4	190	0.25	250	0.37	330	0.37	420	0.37	590	0.37	770	0.55	950	0.75	1130	0.75	1310	0.75	1500	0.75																								
	6	240	0.25	300	0.37	380	0.37	470	0.37	630	0.55	810	0.55	980	0.75	1170	1.1	1350	1.1	1560	1.1																								
SP 45/2	4	130	0.25	210	0.37	290	0.37	370	0.37	530	0.55	660	0.55	820	0.75	970	0.75	1120	0.75	1280	1.1																								
	6	160	0.37	240	0.37	320	0.37	400	0.55	560	0.55	690	0.75	840	0.75	990	1.1	1150	1.1	1300	1.1																								
	8	210	0.37	290	0.55	370	0.55	450	0.55	590	0.75	710	0.75	860	1.1	1010	1.1	1170	1.5	1320	1.5																								
	12	310	0.55	420	0.75	470	0.75	550	0.75	650	1.1	770	1.1	920	1.5	1070	1.5	1220	2.2	1380	2.2																								
SP 45/4	8	130	0.55	230	0.55	320	0.75	420	0.75	590	1.1	780	1.1	960	1.5	1150	1.5	1330	2.2	1460	2.2																								
	12	150	0.55	250	0.55	350	0.75	440	1.1	610	1.1	800	1.5	980	2.2	1170	2.2	1350	3.0	1470	3.0																								
	18	190	0.75	290	1.1	380	1.1	480	1.5	650	1.5	830	2.2	1020	3.0	1200	3.0	1380	4.0	1480	4.0																								
	24	250	1.1	350	1.5	450	1.5	550	2.2	710	2.2	890	3.0	1080	3.0	1260	4.0	1420	4.0	1510	5.5																								
SP 5/1	1	140	0.55	180	0.55	270	0.55	350	0.55	430	0.55	530	0.55	620	0.55	700	0.75	890	0.75	1280	0.75																								
	2	160	0.55	200	0.55	290	0.55	370	0.55	450	0.55	540	0.55	630	0.75	720	0.75	910	0.75	1310	1.1																								
	4	200	0.55	240	0.55	320	0.55	400	0.55	480	0.75	570	0.75	660	0.75	750	1.1	940	1.1	1380	1.5																								
	6	270	0.55	300	0.55	380	0.75	470	0.75	550	1.1	640	1.1	730	1.1	820	1.5	1010	1.5	1450	2.2																								
SP 5/2	4	160	0.75	200	0.75	280	0.75	340	0.75	440	0.75	440	0.75	500	1.1	560	1.1	700																											

The Pomac delivery program - besides the pump assortment in this brochure - comprises an extensive choice of:

- . stainless steel hygienic pumps
- . lobe pumps
- . impeller pumps
- . magnet driven pumps

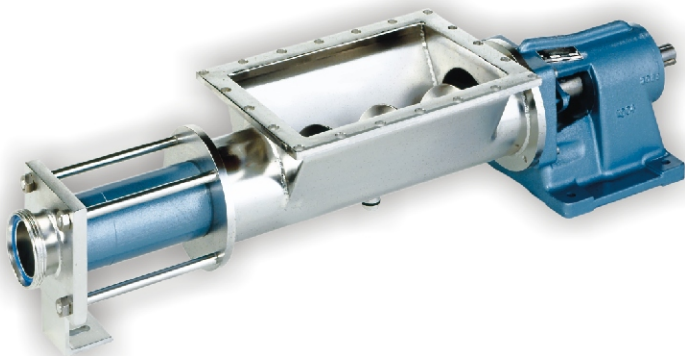
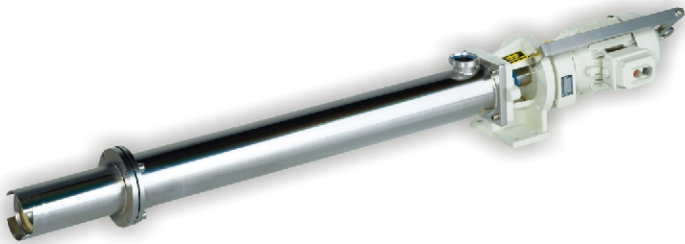
More detailed information on these pump types is available and will be sent to you on request.



Pomac Pumps produces and supplies a complete range of stainless steel centrifugal and positive displacement pumps for the international market. These pumps are used in food and drug industries as well as in pharmaceutical and chemical industries.

The Pomac organisation is characterised by a high degree of customer focussing, flexibility, good service and fast deliveries.

Pomac guarantees high quality and reliability in every detail!



Pomac Pumps

Pomac b.v.

Feithspark 13 - 9356 BX Tolbert
P.O. Box 32 - 9356 ZG Tolbert
Holland

tel +31 (0)594 512877

fax +31 (0)594 517002

E-mail: info@pomacpumps.com

www.pomacpumps.com