



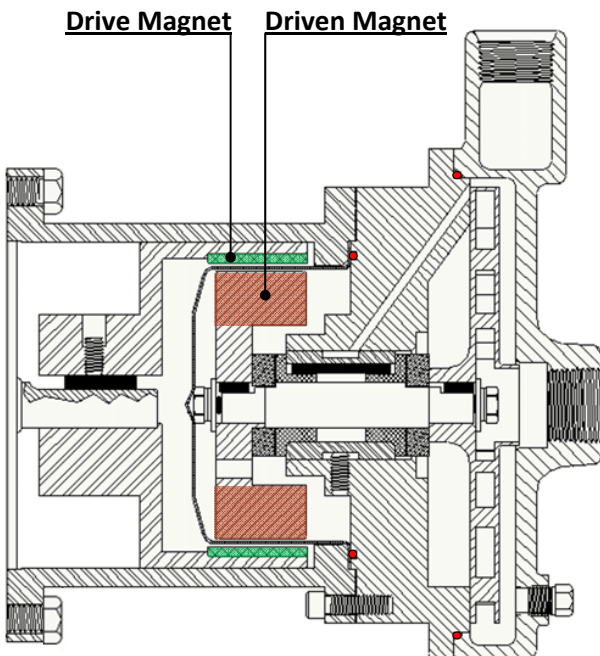
## Features

- Leak-proof, magnetic drive
- Eliminates seals to reduce friction wear
- High temperature capacity
- Threaded pump connections

## Applications

- Toxic or Explosive Fluids
- Aggressive Chemicals
- Biodiesel Production
- Water Treatment
- Galvanic Processes, Surface Treatments
- Scrubber Applications
- Pharmaceutical Industry

## Cross Section – Magnets



## HP

### Pump Models

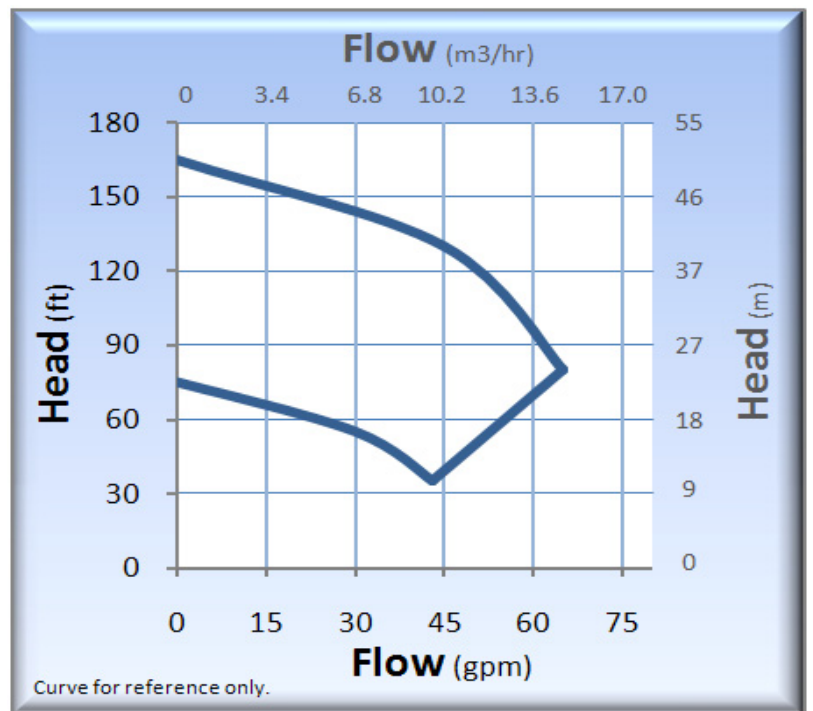
- HP75MDSS – 316 Stainless Steel
- HP100MDSS – 316 Stainless Steel

## Standard Specifications

- HP75MD Discharge 3/4" FNPT, Suction 3/4" FNPT
- HP100MD Discharge 1" MNPT, Suction 1" FNPT
- Maximum Impeller Diameter: 6.00"
- Impeller Material: 316SS
- Motor: NEMA C Face
- O-rings: Viton
- Bushings: Carbon Graphite
- Thrust Washers: Ceramic
- Magnets: Samarium Cobalt

*Note: Contact factory for additional options*

## Performance Curve – 60 Hz



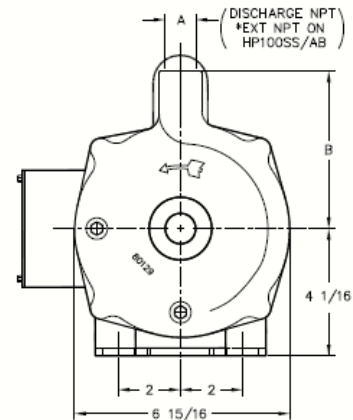
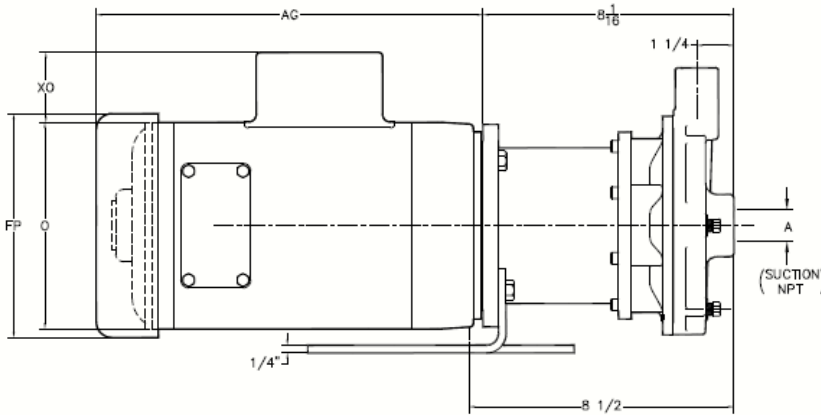
# HP (MAG DRIVE)

Technical Information	
Max Flow	65 GPM (15 m3/hr)
Max Head	165 feet (50 m)
Minimum Flow	0.5 GPM (0.12 m3/hr)
Max Working Pressure	300 PSI (21 bar)
Max Temp.	350°F (177°C)*

\* Temperature limits will vary depending on O-ring material and type of liquid being pumped.

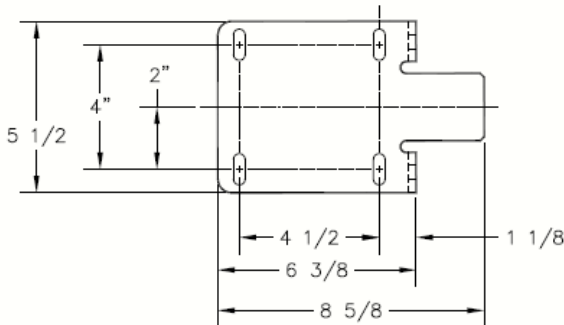
Materials of Construction	
HPMD	SS
Volute	316 Stainless Steel
Impeller	316 Stainless Steel
Bracket	316 Stainless Steel
Fasteners	316 Stainless Steel
O-ring	Viton (STD), Teflon, Buna, EPR, Neoprene, Kalrez, & Fluoro-Silicon
Shaft	316 Stainless Steel (STD), Tungsten Carbide Coated
Bushings	Carbon (STD), Silicon Carbide
Thrust Washers	Ceramic (STD), Silicon Carbide
Magnet Cup	316 Stainless Steel
Magnets	Samarium Cobalt

## Dimensions (HP Mag-Drive)



MATERIAL	MODEL	A	B
SS	HP75SS	3/4	5 1/4
SS	HP100SS	1	5

NOTE:  
ALL DIMENSIONS ARE ROUNDED TO THE NEAREST 1/16 INCH.



**Note:**

Motors 5 HP and above require VFD or soft starter. Motor dimensions are for reference only and will vary by model and make.

HP	RPM	FRM	MOTOR END DIMENSIONS			
			AG	FP	O	XO
1/4	1800	56C	7 3/4	6 1/8	5 3/8	2 1/16
1/3	1800	56C	8 1/4	6 1/8	5 3/8	2 1/16
1/2	1800	56C	8 3/4	6 1/8	5 3/8	2 1/16
1/3	3600	56C	8 1/2	6 1/8	5 3/8	2 1/16
1/2	3600	56C	8 3/4	6 1/8	5 3/8	2 1/16
3/4	3600	56C	9 1/4	6 1/8	5 3/8	2 1/16
1	3600	56C	9 3/4	6 1/8	5 3/8	2 1/16
1 1/2	3600	56C	10 1/2	7 3/16	6 7/8	2 1/4
2	3600	56C	11 1/8	7 3/16	6 7/8	2 1/4
3	3600	56C	12 3/8	7 3/16	6 7/8	2 1/4
5	3600	184C	13 5/8	8 1/2	7 7/8	2 1/4



Contact factory for special pump configurations,  
same day, and next day delivery options.



21775 Eighth Street East  
Sonoma, CA 95476-0329  
MAIN (707) 938-8441  
TOLL FREE (800) 345-7867  
FAX (707) 938-0764  
E-mail: [sales@pricepump.com](mailto:sales@pricepump.com)  
Website: [www.pricepump.com](http://www.pricepump.com)



Rev. Date: May 2009