



SP150AI  
Shown

## Features

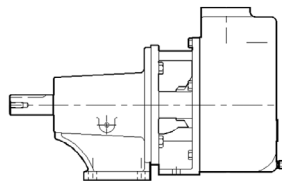
- **Pump Design** – Compact, close coupled
- **Teflon Seal** – Type 9 available
- **Flush Options** – Recirculating

## Applications

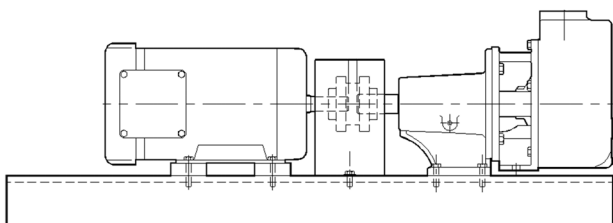
- Chemical Sump Pumps
- Ground Water Remediation
- Waste Water Treatment
- Pumping Solvents
- Deionized Water
- Chemical Process
- Agricultural Chemicals
- Dewatering

## Optional Configurations

- **Air Motor:** Up to 1-1/2 HP
- **Power Frame Mounting:**



- **Long-Coupled Mounting:**



## SP150 (Self Priming)

### Pump Volute / Impeller Materials

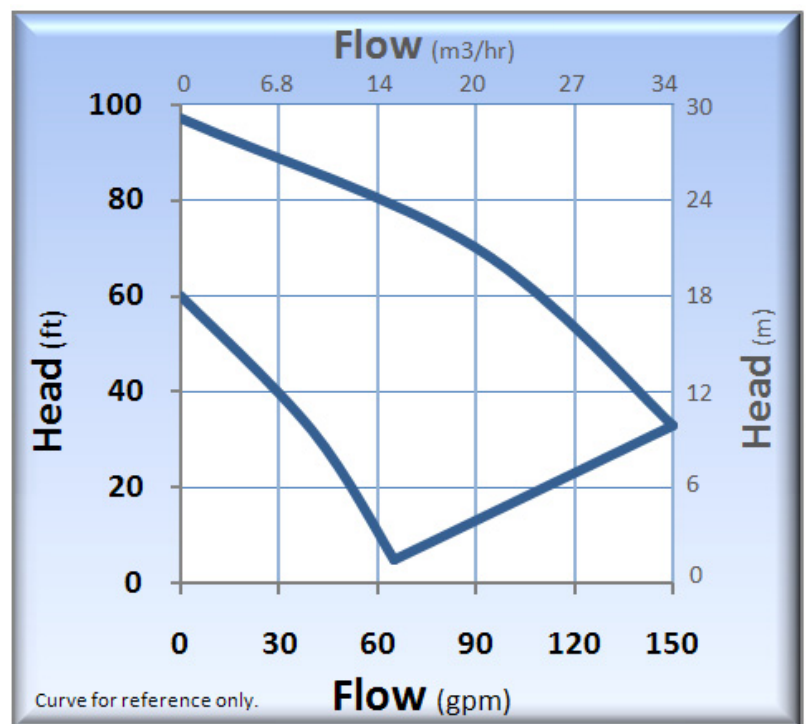
- SP150 (AI) – Cast Iron / Cast Iron
- SP150 (SF) – Cast Iron / 316SS
- SP150 (SS) – 316SS / 316SS

## Standard Specifications

- SP150 Discharge 1-1/2" FNPT, Suction 1-1/2" FNPT
- Maximum Impeller Diameter: 4.75"
- Maximum Impeller Vane Height: 0.50"
- Stub Shaft: 5/8" 316SS
- Motor: NEMA C Face (Multiple enclosures available)
- Mechanical Seal:
  - Single, 3/4" Type 21 Buna, Carbon vs. Ceramic (AI, SF)
  - Single, 3/4" Type 21 Viton, Carbon vs. Ceramic (SS)

*Note: Additional seal options available*
- Gasket: Syn. Fiber (AI, SF) and PTFE (SS)

## Performance Curve – 60 Hz



# SP150

Technical Information	
Max Flow	150 GPM (27 m3/hr)
Max Head	97 feet (46 m)
Min. Flow	10 GPM (2.3 m3/hr)
Max Solid Size	0.060" (1.5 mm)
Max Working Pressure	(Type 8 Seal) 325 PSI (22.4 bar)
	(Type 9 Seal) 350 PSI (24.1 bar)
	(Type 21 Seal) 150 PSI (10.3 bar)
Max Temp.	300°F (149°C)*

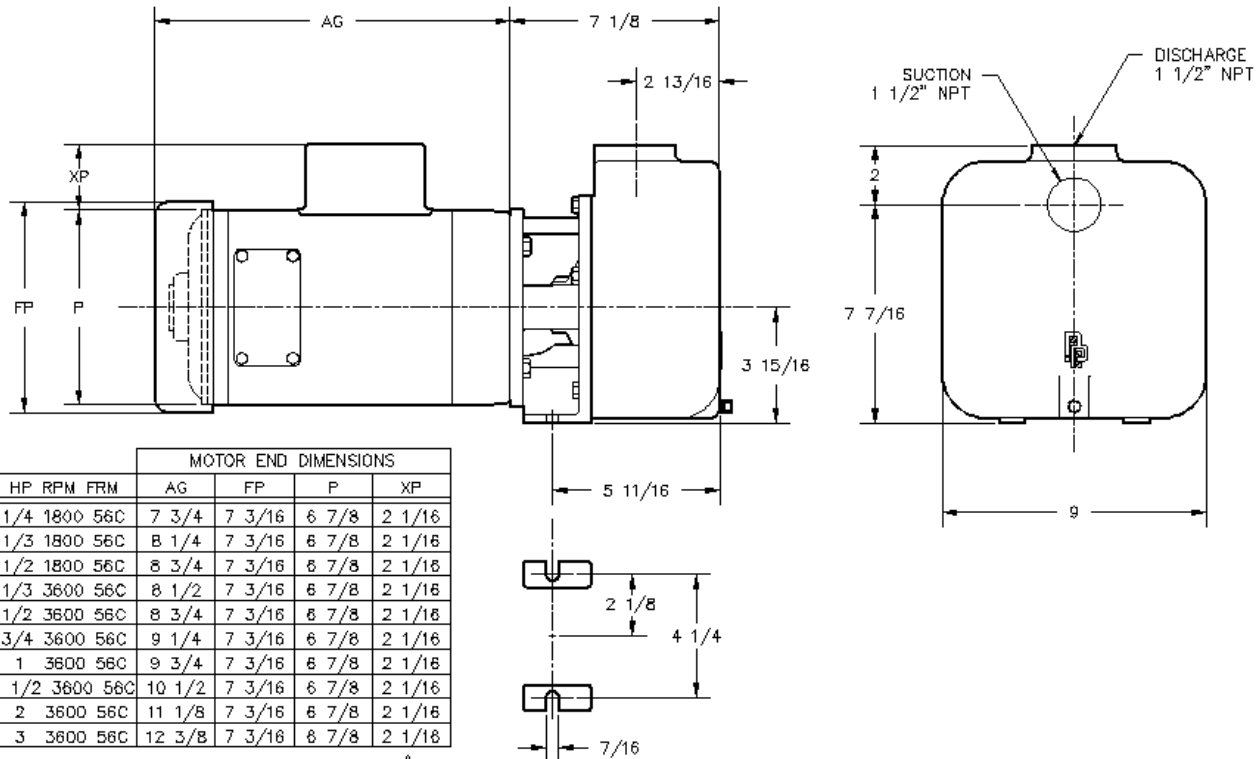
\* Temperature limits are based on standard seal and gasket materials, and will vary according to the liquid being pumped.

Materials of Construction			
SP150	AI	SF	SS
Volute / Diffuser	Cast Iron	Cast Iron	316SS
Impeller	Cast Iron	316SS	316SS
Bracket	Cast Iron	Cast Iron	316SS
Gaskets	Syn. Fiber	Syn. Fiber	Teflon
Fasteners	316SS	316SS	316SS

Priming Times (Minutes: Seconds)				
Impeller Size	5 ft.	10 ft.	15 ft.	20 ft.
4.25/.07	1:30	3:45	6:30	12:25
4.63/.12	1:00	2:25	5:25	10:00
4.75/.25	0:38	1:15	2:48	6:15
4.75/.50	0:20	0:35	1:05	2:25

Notes: For all other impeller sizes, interpolate to achieve approximate times.

## Dimensions (SP150)



HP	RPM	FRM	MOTOR END DIMENSIONS			
			AG	FP	P	XP
1/4	1800	56C	7 3/4	7 3/16	6 7/8	2 1/16
1/3	1800	56C	8 1/4	7 3/16	6 7/8	2 1/16
1/2	1800	56C	8 3/4	7 3/16	6 7/8	2 1/16
1/3	3600	56C	8 1/2	7 3/16	6 7/8	2 1/16
1/2	3600	56C	8 3/4	7 3/16	6 7/8	2 1/16
3/4	3600	56C	9 1/4	7 3/16	6 7/8	2 1/16
1	3600	56C	9 3/4	7 3/16	6 7/8	2 1/16
1 1/2	3600	56C	10 1/2	7 3/16	6 7/8	2 1/16
2	3600	56C	11 1/8	7 3/16	6 7/8	2 1/16
3	3600	56C	12 3/8	7 3/16	6 7/8	2 1/16

**NOTE:**

- MOTOR DIMENSIONS WILL VARY BY MODEL AND MAKE, DIMENSIONS ARE TO BE USED FOR REFERENCE ONLY.
- ALL DIMENSIONS ARE ROUNDED TO THE NEAREST 1/8 INCH.
- DIMENSION "XP" APPLIES TO SINGLE PHASE MOTORS ONLY.



Contact factory for special pump configurations, same day, and next day delivery options.

21775 Eighth Street East  
 Sonoma, CA 95476-0329  
 MAIN (707) 938-8441  
 TOLL FREE (800) 345-7867  
 FAX (707) 938-0764  
 E-mail: [sales@pricepump.com](mailto:sales@pricepump.com)  
 Website: [www.pricepump.com](http://www.pricepump.com)



Rev. Date: May 2009