



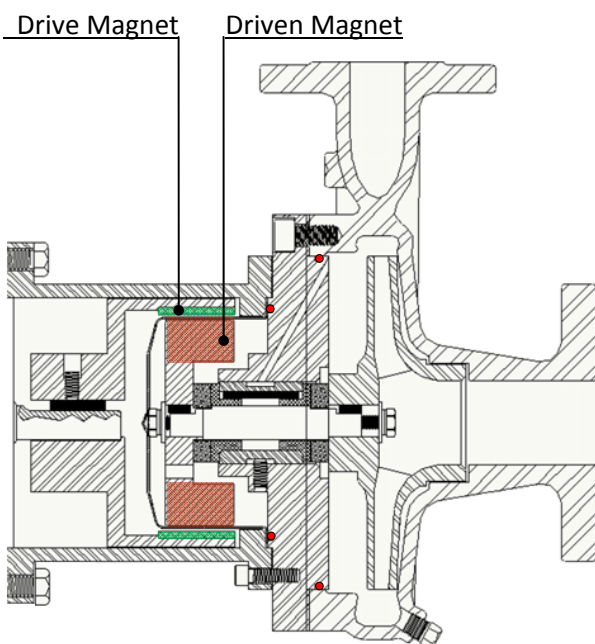
## Features

- Leak-proof, magnetic drive
- Eliminates seals to reduce friction wear
- High temperature capacity
- 150 lb. centerline ANSI flange pump connections

## Applications

- Toxic or Explosive Fluids
- Aggressive Chemicals
- Biodiesel Production
- Water Treatment
- Galvanic Processes, Surface Treatments
- Scrubber Applications
- Pharmaceutical Industry
- Vapor Degreasers

## Cross Section - Magnets



## XL

### Pump Models

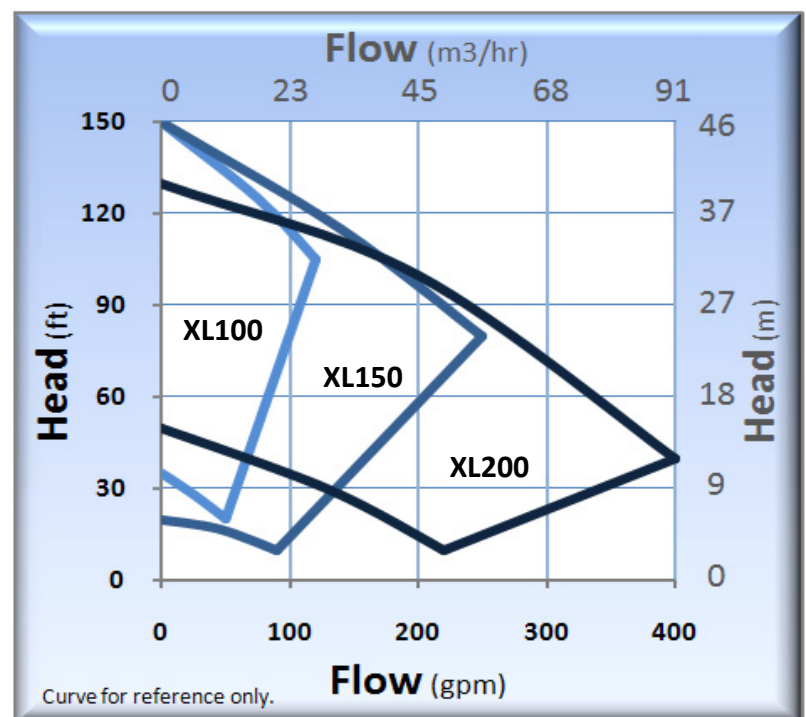
- XL100MDSS – 316 Stainless Steel
- XL150MDSS – 316 Stainless Steel
- XL200MDSS – 316 Stainless Steel

## Standard Specifications

- XL100MD Discharge 1", Suction 1-1/2" ANSI flanges
- XL150MD Discharge 1-1/2", Suction 3" ANSI flanges
- XL200MD Discharge 2", Suction 3" ANSI flanges  
*Flanges: 150 lb. Centerline ANSI Dimensioned*
- Maximum Impeller Diameter: 5.98"
- Impeller Material: 316SS
- Motor: NEMA C Face
- O-rings: Viton
- Bushings: Carbon Graphite
- Thrust Washers: Ceramic
- Magnets: Samarium Cobalt

*Note: Contact factory for additional options*

## Performance Curve – 60 Hz



# XL (MAG DRIVE)

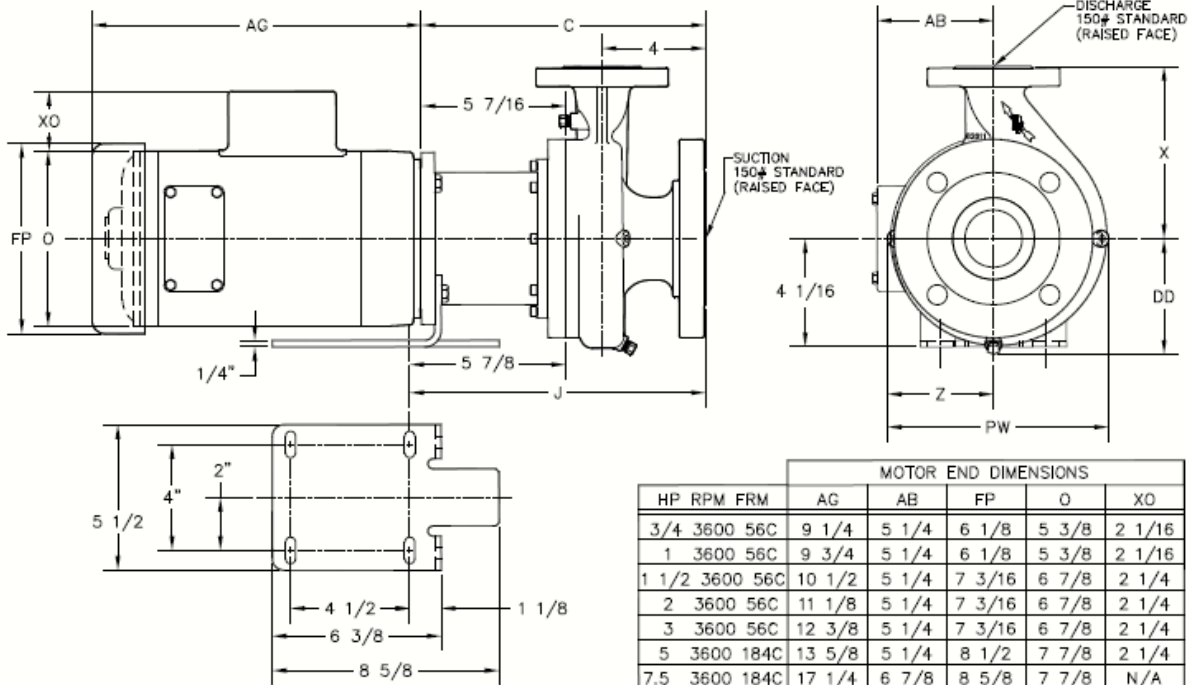
Technical Information	
Max Flow (XL100MD)	120 GPM (27 m3/hr)
Max Flow (XL150MD)	250 GPM (57 m3/hr)
Max Flow (XL200MD)	400 GPM (91 m3/hr)
Max Head	150 feet (46 m)
Min. Flow (XL100MD)	10 GPM (2.3 m3/hr)
Min. Flow (XL150MD)	35 GPM (7.9 m3/hr)
Min. Flow (XL200MD)	50 GPM (11 m3/hr)
Max Working Pressure	300 PSI (21 bar)
Max Temp.	350°F (177°C)*

\* Temperature limits will vary depending on O-ring material and type of liquid being pumped.

Materials of Construction	
XLMD	SS
Volute	316 Stainless Steel
Impeller	316 Stainless Steel
Bracket	316 Stainless Steel
Fasteners	316 Stainless Steel
O-ring	Viton (STD), Teflon, Buna, EPR, Neoprene, Kalrez, & Fluoro-Silicon
Shaft	316 Stainless Steel (STD), Tungsten Carbide Coated
Bushings	Carbon (STD), Silicon Carbide
Thrust Washers	Ceramic (STD), Silicon Carbide
Magnet Cup	316 Stainless Steel
Magnets	Samarium Cobalt

## Dimensions (XL Mag-Drive)

	PUMP END DIMENSIONS						
	C	DD	PW	J	X	Z	SUCTION DISCHG
XL100	10 3/4	4 1/16	8	11 1/8	6 1/2	3 7/8	1-1/2" 1"
XL150	10 3/4	4 3/8	8 3/8	11 1/8	6 1/2	4	3" 1-1/2"
XL200	11	4 3/8	8 3/4	11 3/8	8 1/4	4 1/16	3" 2"



MOTOR END DIMENSIONS							
HP	RPM	FRM	AG	AB	FP	O	XO
3/4	3600	56C	9 1/4	5 1/4	6 1/8	5 3/8	2 1/16
1	3600	56C	9 3/4	5 1/4	6 1/8	5 3/8	2 1/16
1 1/2	3600	56C	10 1/2	5 1/4	7 3/16	6 7/8	2 1/4
2	3600	56C	11 1/8	5 1/4	7 3/16	6 7/8	2 1/4
3	3600	56C	12 3/8	5 1/4	7 3/16	6 7/8	2 1/4
5	3600	184C	13 5/8	5 1/4	8 1/2	7 7/8	2 1/4
7.5	3600	184C	17 1/4	6 7/8	8 5/8	7 7/8	N/A
10	3600	184C	16 1/2	8	10 1/4	9 5/8	N/A
15	3600	184C	19 7/8	7 1/2	10 3/8	9 1/2	N/A

- NOTES:  
 1. MOTOR DIMENSIONS WILL VARY BY MODEL AND MAKE. DIMENSIONS ARE TO BE USED FOR REFERENCE ONLY.  
 2. DIMENSION "XO" APPLIES TO SINGLE PHASE MOTORS ONLY.  
 3. ALL DIMENSIONS ARE ROUNDED TO THE NEAREST 1/8 INCH.

Note: Motors 5 HP and above require VFD or soft starter.

**PRICE PUMP CO.**

21775 Eighth Street East  
 Sonoma, CA 95476-0329  
 MAIN (707) 938-8441  
 TOLL FREE (800) 345-7867  
 FAX (707) 938-0764  
 E-mail: [sales@pricepump.com](mailto:sales@pricepump.com)  
 Website: [www.pricepump.com](http://www.pricepump.com)

Contact factory for special pump configurations,  
 same day, and next day delivery options.

Member of:  
**Hydraulic INSTITUTE**



Rev. Date: May 2009