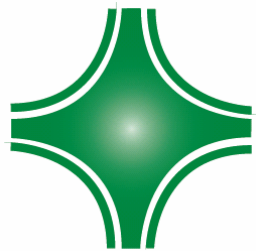
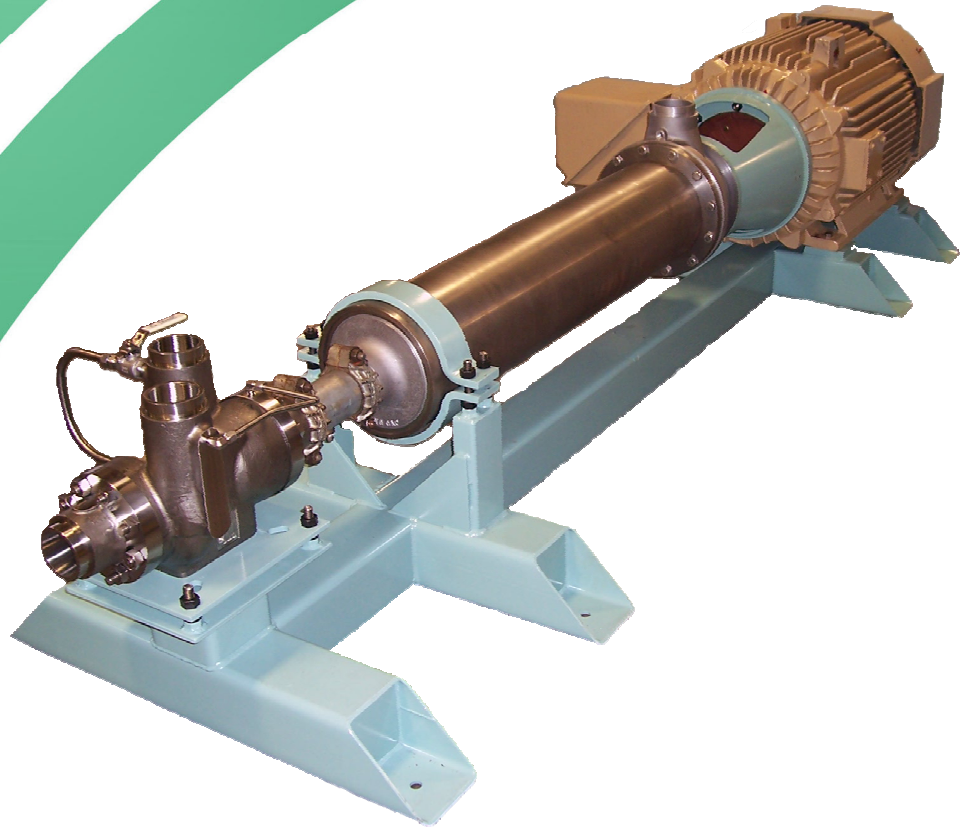


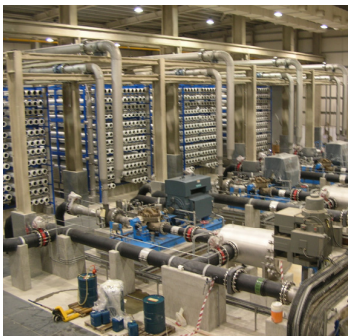
Bringing 20 years of RO experience in advance pump technology  
to create the Lowest Total Life Cycle Cost solution  
for RO high pressure service

# MSRO PUMPS

for Reverse Osmosis Industry



**PUMP**ENGINEERING, INC.



HIGH EFFICIENCY/LOW MAINTENANCE HIGH PRESSURE PUMP  
SPECIFICALLY DEVELOPED FOR THE RO INDUSTRY

MOTOR - 2 POLE 50 OR 60 HZ NEMA AND IEC  
FOOT-MOUNTED MOTORS AVAILABLE WITH ENCLOSURES, VOLTAGE,  
AND VARIABLE FREQUENCY DRIVE RATED TO SUIT LOCAL CONDITION

ALL BEARINGS PRODUCT LUBRICATED - NO OIL OR GREASE  
ADVANCED HYDRAULICS - DESIGNED WITH ANSYS BLADE  
MODELER FOR HIGHEST EFFICIENCY IN THE INDUSTRY  
NO PUMP DISASSEMBLY TO MAINTAIN MECHANICAL SEAL  
API 682 MECHANICAL SEAL OPTION  
API 610 FLUSH/QUENCH OPTION

ELASTOMERIC OR STAINLESS STEEL DISC COUPLING

MOTOR-PUMP ADAPTER ELIMINATES  
ALIGNMENT PROCEDURE

VICTAULIC SUCTION CONNECTION STANDARD  
150 LB. ANSI FLANGE OPTION

SCH. 80 DUPLEX STAINLESS STEEL BARREL CASING

VICTAULIC DISCHARGE CONNECTION STANDARD  
300 AND 600 LB. ANSI FLANGE OPTION

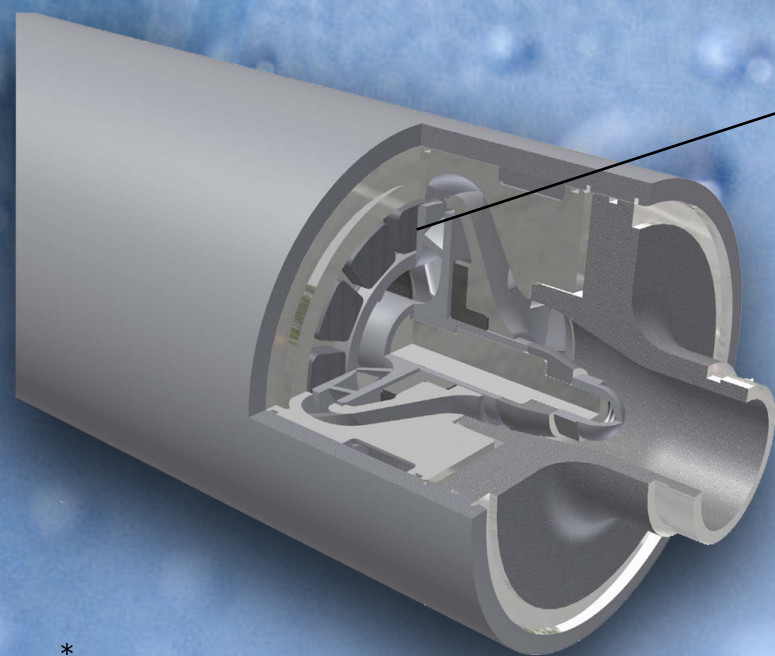
6 X 6 SQUARE TUBE  
RIGID BASE

ANSI 5610 UNIVERSAL STANDARD  
MECHANICAL SEAL REQUIRES NO  
PUMP DISASSEMBLY FOR MAINTENANCE

HIPERAX™ WAUKESHA THRUST BEARING  
MAXIMIZES EFFICIENCY BY ELIMINATING  
BALANCE DRUM/DISC LEAKAGE AND  
RETURN LINE

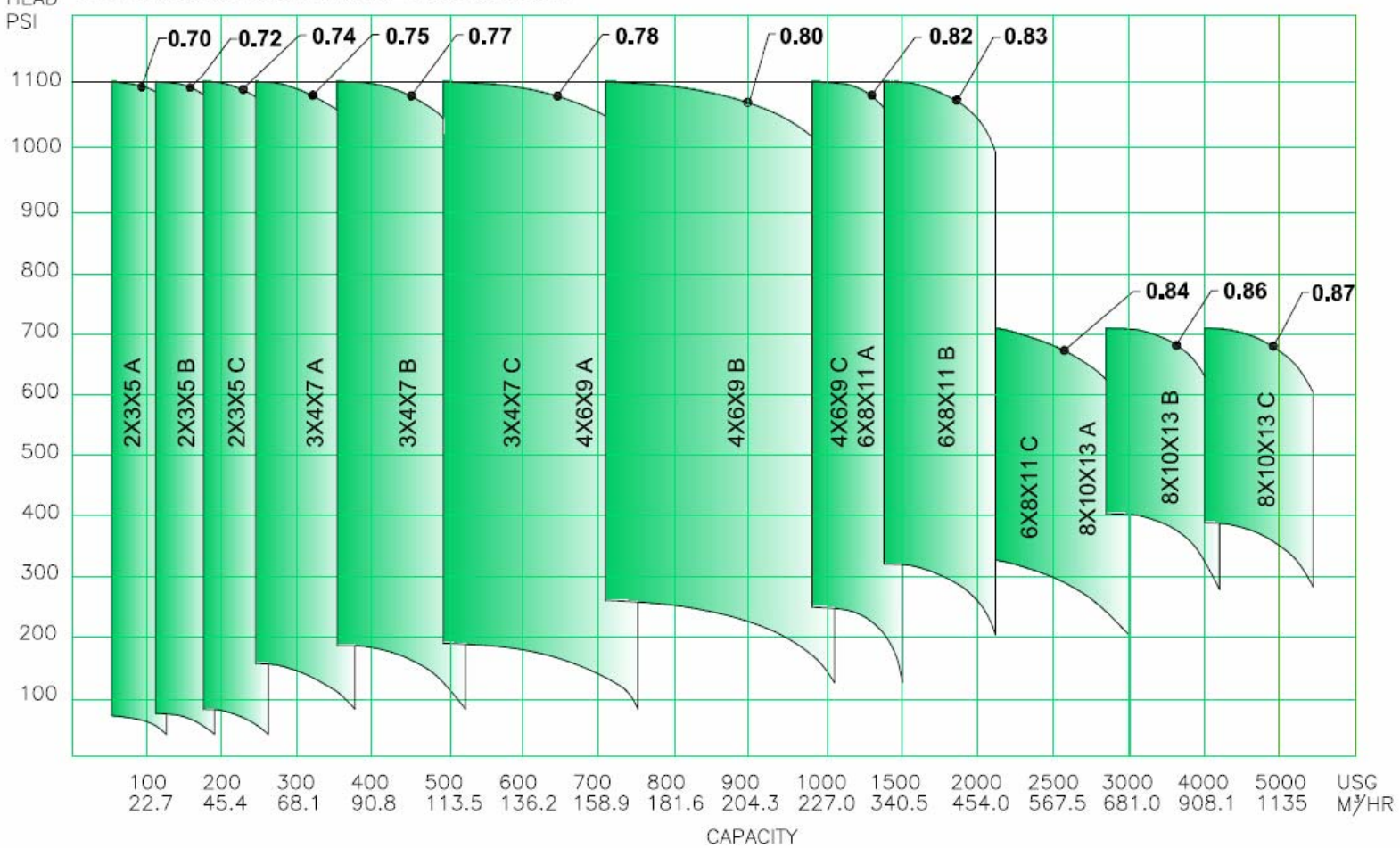
ALL DUPLEX 2205  
HIGH EFFICIENCY INVESTMENT CAST  
IMPELLERS AND DIFFUSER STAGES

THE HEAVY DUTY INDUSTRIAL PUMP  
FOR RO SERVICE



\* US PATENT PENDING

**HYDRAULIC COVERAGE MSRO PUMP**



# PUMPENGINEERING, INC.

1004 West Hurd Road

Monroe, MI 48162 USA

Tel: +1 (734) 242-1772

Fax: +1 (734) 242-9777

[www.pumpengineering.com](http://www.pumpengineering.com)

[info@pumpengineering.com](mailto:info@pumpengineering.com)

## GLOBAL SUPPORT NETWORK

WITH OFFICES IN

AUSTRALIA | CANADA | CHINA | EGYPT | EUROPE | INDIA | ITALY | JAPAN | KOREA | SAUDI ARABIA | SPAIN | UAE | USA