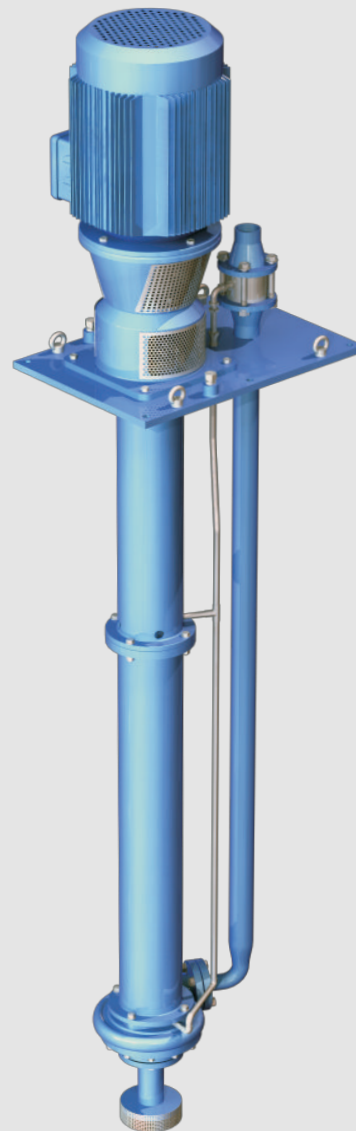




► The power of proven technology

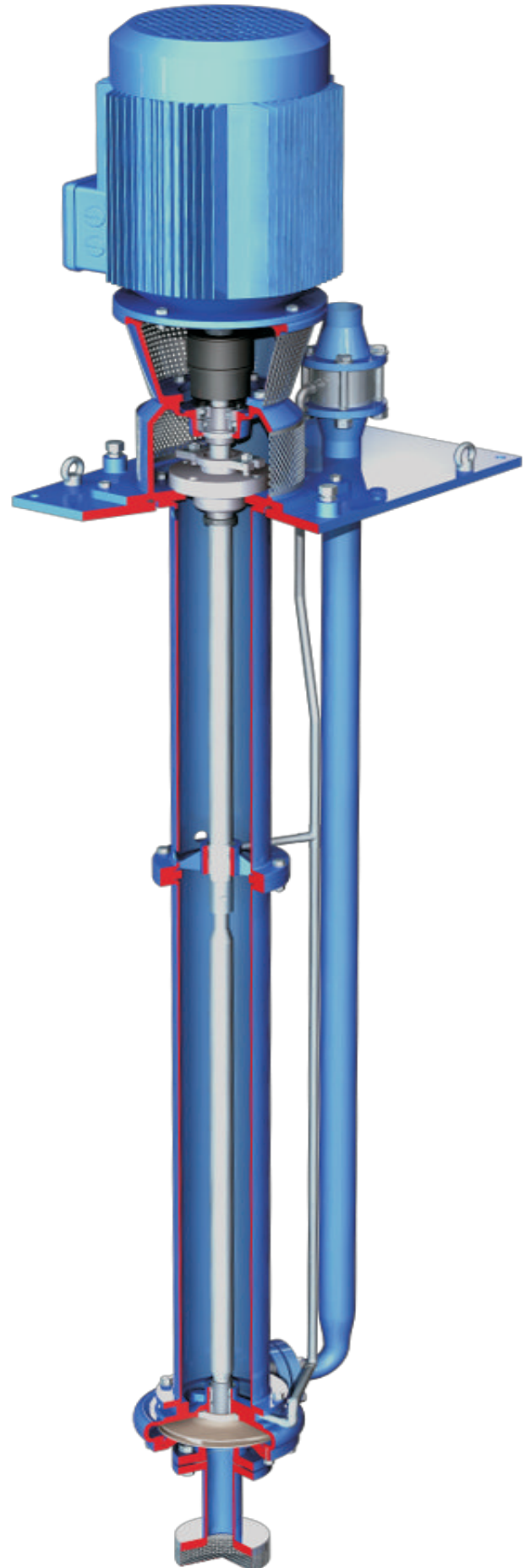
TAN



Vertically suspended,  
Line shaft driven pumps

## General design description

- The submersible pumps of the TAN range feature different bearing and hydraulic designs
- These pumps are available for overall length up to 5.5 m
- These pumps are suitable for clean and slightly polluted liquids



### Technical data

Max. Capacity 1200 m<sup>3</sup>/h  
Max. Head 120 m.l.c.  
Max. Temperature 200° C  
Max. Speed 1800 rpm  
Design pressure 16 bar

## Applications



**General industry**  
TAN pumps can be used for all kind of sump duties, the mining industry, steel works, pulp & paper, communal water installations.

**Petrochemical industry**  
TAN pumps are used in draining waste water collecting basins.

## Features and benefits

- Motor and pump shaft are connected by means of a flexible coupling
- Pumps can be equipped with a suction pipe to permit operation in deep pits
- Standard equipped with greased bearing, upon request oil lubrication will be possible
- IEC standard motors, upon request in explosion proof design
- For special applications pumps can be provided with a wide variety of mechanical seals

### Electric motor

- Mounted on a steel made motor support lantern piece
- Accurate alignment by means of adjusting bolts
- Customer specified or standard IEC flange motor 'V1 (IM 3011)'

### Coupling

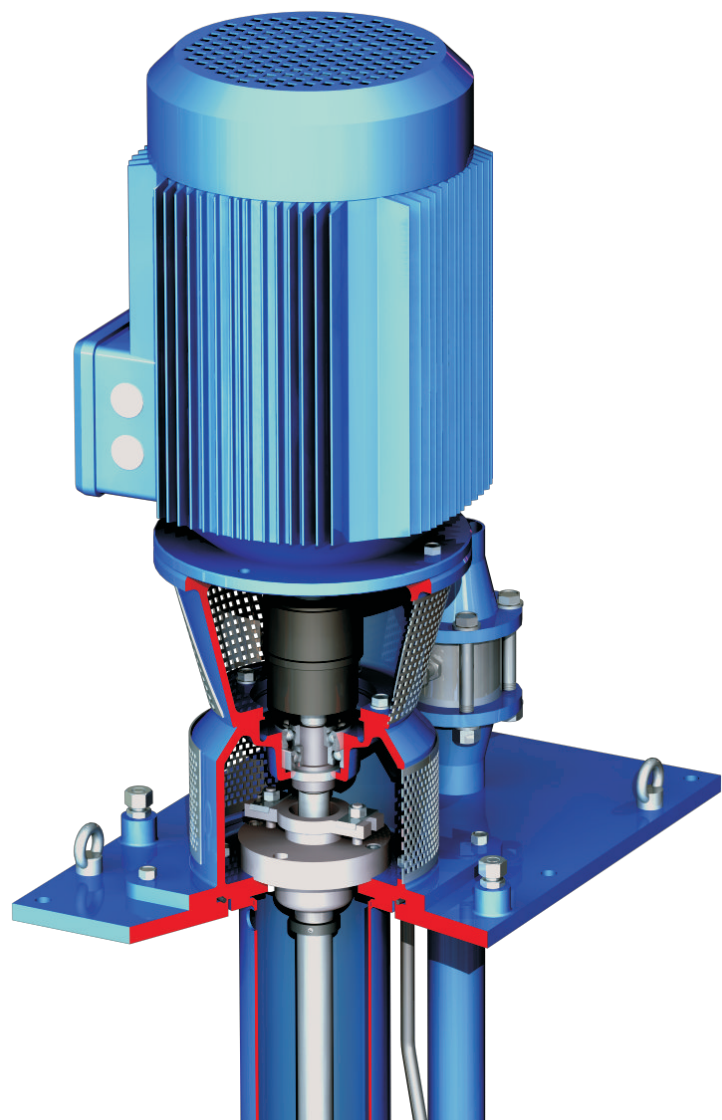
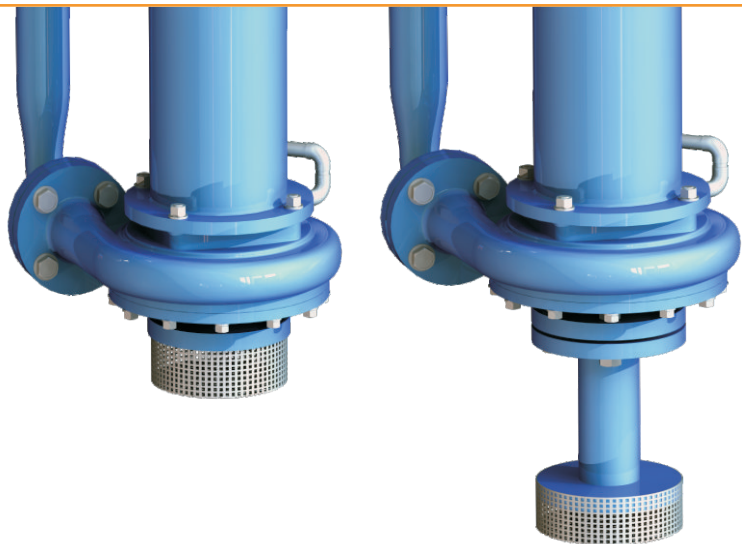
- Standard fitted with flexible coupling
- Optionally available with membrane coupling or non-sparking coupling
- Coupling guard to prevent entrance to the rotating parts

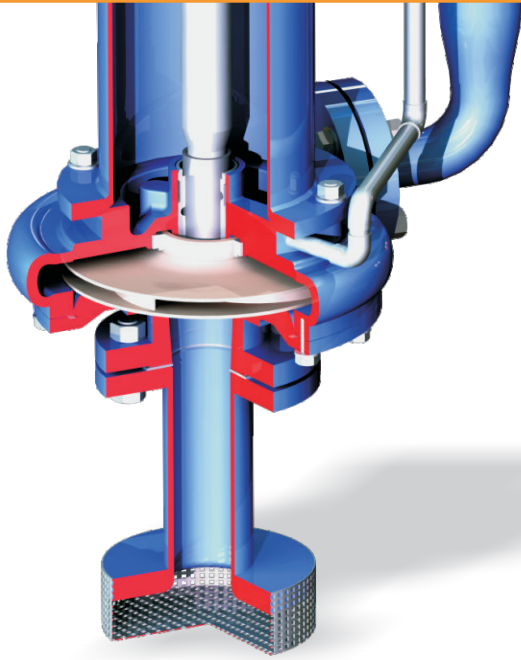
### Delivery connection

- Flanges according to ISO 7005 PN 16
- Flanges according to ANSI B16.5 150 lbs

### Baseplate

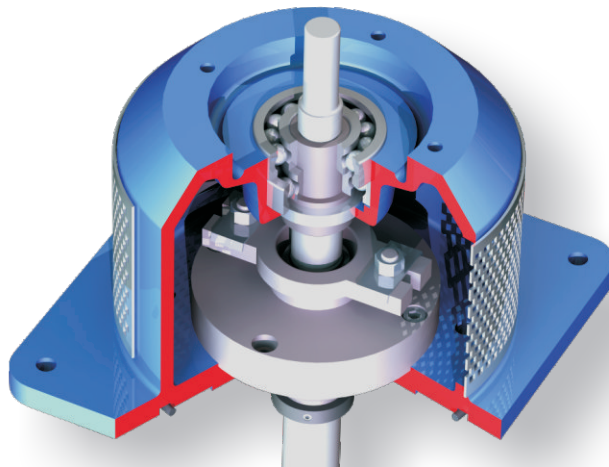
- Standard version is a rectangular plate
- Can be adapted to the size of the pit according to customer specifications
- Lifting lugs for easy maintenance
- Provided with earthing boss





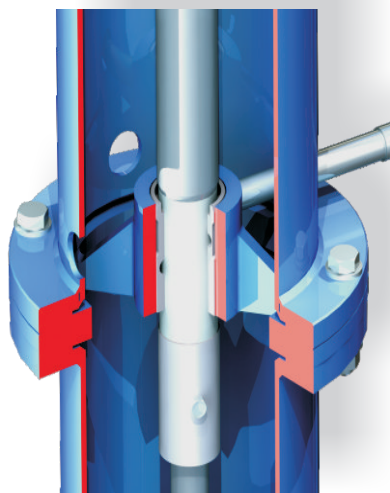
### Benefits

- Available in several materials
- High pump efficiency
- Suited for a wide span of duties
- Easy maintenance
- Compact, space saving construction
- Low maintenance cost
- Designed to meet specific lengths and application requirements
- Base plate designed to meet existing support arrangements



### Ball bearing construction

- Two paired angular-contact ball bearing for axial loads on the pump shaft
- Grease lubricated



### Slide bearings

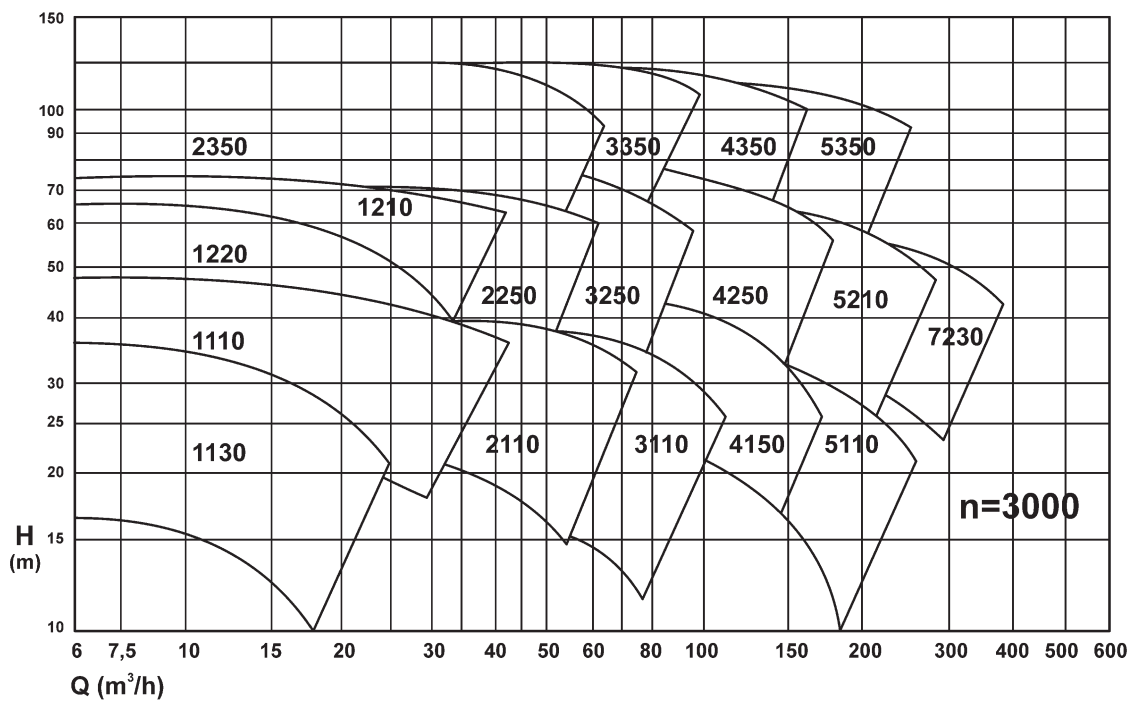
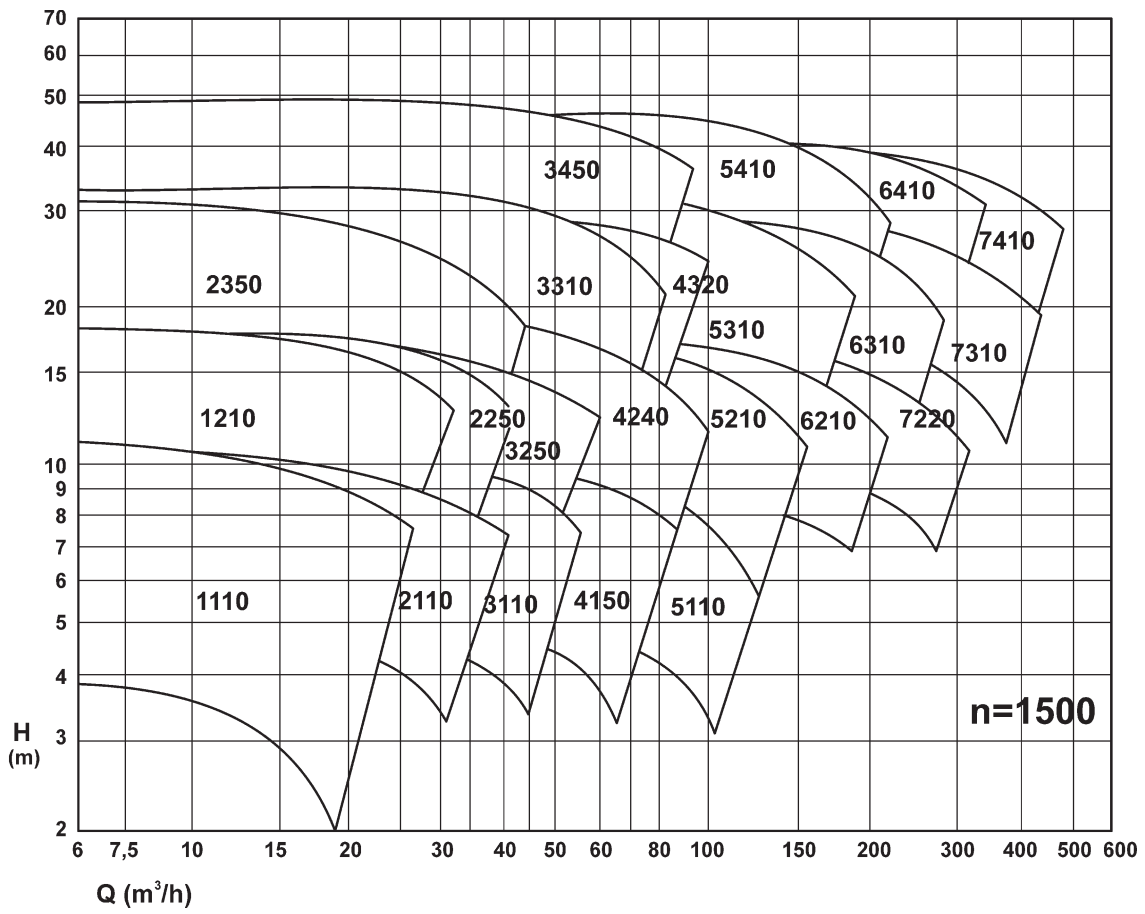
- Pump shaft provided with slide bearings
- Number of slide bearings depending on the length of the pump shaft

## Materials

Alternative materials according to customer specifications.  
The standard impeller is a closed impeller, but for contaminated liquids, containing fibres, a half open impeller or a vortex impeller is available on request.

<b>Parts</b>	<b>Standard available materials</b>		
Pump casing	stainless steel	cast steel	cast iron
Impeller	stainless steel	bronze	cast iron
Shaft	stainless steel	bearing group 4: steel	
Collumn pipe	stainless steel	steel	
Discharge pipe	stainless steel	steel	
Slide bearings	carbon		

# Curves





### **Rodelta Pumps International B.V.**

- |                               |  |
|-------------------------------|--|
| ▲ Enschedesestraat 234        | ▲ Phone: +31(0)742455200   |
| ▲ 7553 CM Hengelo             | ▲ Fax: +31(0)742455201   |
| ▲ PO Box 650, 7550 AR Hengelo | ▲ E-mail: <a href="mailto:info@rodelta.com">info@rodelta.com</a> |
| ▲ The Netherlands             | ▲ Internet: <a href="http://www.rodelta.com">www.rodelta.com</a> |