

Roper Pumps

ROC
Series



Roper Pumps' "ROC" goes with the flow and performs spotlessly in stainless steel

ROC Solid Service



The leading force behind liquids.®

Applications

- Chemical processing
- Pharmaceutical industries
- Injection and transfer applications of acids and solvents
- Trademarked design

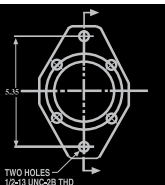
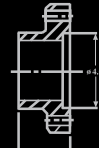
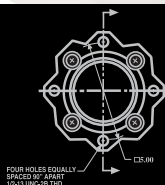
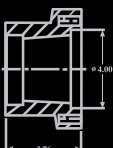
Features

- Heavy duty stainless steel gear pumps for optimum chemical capability
- Back pull-out design for easy maintenance without disturbing piping
- One-piece "D" style bushings eliminate the need for wearplates and provide positive alignment and gear support
- Capable of operating at nominal motor speeds

- Good for up to 300psi differential pressures
- No integral relief valve available, external relief recommended

Options

- Various drive arrangements available. Close-coupled bracket and magnetic drive arrangements available for the small series.



ROC Series

Pump Model	Theoretical Capacity	Maximum Speed	Maximum Flow at Maximum Speed (0 Discharge Pressure)	Maximum Pressure	Port Connection
X2.5	.00025GPR(.946 CC/REV)	3600 RPM	0.9GPM (.204 M ³ /HR)	300 PSI (20 Bar)	1/2"NPT"
X5	.0005GPR(1.89 CC/REV)	3600 RPM	1.8GPM (.41 M ³ /HR)	300 PSI (20 Bar)	1/2"NPT"
1	.001GPR(3.79 CC/REV)	3600 RPM	3.6GPM (.82 M ³ /HR)	300 PSI (20 Bar)	1/2"NPT"
2	.002GPR(7.57 CC/REV)	3600 RPM	7.2GPM (1.64 M ³ /HR)	300 PSI (20 Bar)	1/2"NPT"
3	.003GPR(11.36 CC/REV)	3600 RPM	10.8GPM (2.45 M ³ /HR)	300 PSI (20 Bar)	3/4"NPT"
7	.007GPR(26.5 CC/REV)	1800 RPM	12.6GPM (2.86 M ³ /HR)	300 PSI (20 Bar)	1-1/2"NPT"
12	.012GPR(45.42 CC/REV)	1800 RPM	21.6GPM (4.91 M ³ /HR)	300 PSI (20 Bar)	1-1/2"NPT"
18	.018GPR(68.14 CC/REV)	1800 RPM	32.4GPM (7.36 M ³ /HR)	300 PSI (20 Bar)	2"NPT"

Materials of Construction

Housing	Gears/Shaft	Bearings	O'Rings
<ul style="list-style-type: none"> • 316SS • ASTM A743 	<ul style="list-style-type: none"> • 17-4pH SS • ASTM A564 Type 630 	<ul style="list-style-type: none"> • Carbon Graphite 	<ul style="list-style-type: none"> • PTFE
<p>Options</p>		<ul style="list-style-type: none"> • Silicon Carbide 	

Key Features

- Helical gears for quiet operation
- Bi-directional rotation
- Back pullout design for easy disassembly without disturbing piping
- "D" style bushings
- Two moving parts for less wear and reduced maintenance
- Seal flexibility - single or double
- Close coupled or foot mount design

Option

- Magnetic drive option for sealless design

