

Roper Pumps

Z

Series

A reliable performer, Roper Pumps' "Z" Series is open to easy maintenance and has a wide choice of seals.

Reliable and Versatile



The leading force behind liquids.

Applications

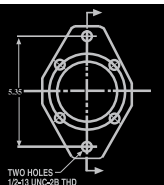
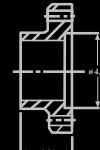
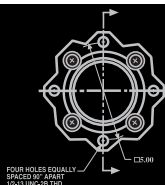
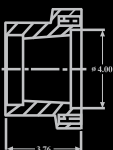
- Excellent for mixing, transferring, blending and recirculating a variety of fluids
- Ideal for the chemical and petroleum markets

Features

- Cast iron helical gear pump
- Two-piece backplate for flexible sealing options
- Many parts interchangeable with 3600 series
- Differential pressures to 125 psi
- Up to 165 gpm

Options

- ANSI flanges
- Single, double and cartridge sealing options
- Integral relief valve and integral gear reducer
- Outboard bearing, depending on drive and seal arrangements



Z Series

Pump Model	Theoretical Capacity	Maximum Speed	Maximum Flow at Maximum Speed (0 Discharge Pressure)	Maximum Pressure	Port Connection
Z11	.11GPR(416.4 CC/REV)	750 RPM	82.5GPM (18.7 M ³ /HR)	125 PSI (8.6 Bar)	2"NPT"
Z17	.17GPR(643.5 CC/REV)	750 RPM	127.5GPM (29.0 M ³ /HR)	125 PSI (8.6 Bar)	3"NPT"
Z22	.22GPR(832.8 CC/REV)	750 RPM	165GPM (37.5 M ³ /HR)	125 PSI (8.6 Bar)	4"NPT"

Materials of Construction

Housing	Gears/Shaft	Bearings	Port Arrange	Seal
<ul style="list-style-type: none"> Ductile Iron 	<ul style="list-style-type: none"> Hardened Iron Hardened Steel 440SS 	<ul style="list-style-type: none"> Bronze Carbon Iron PTFE 	<ul style="list-style-type: none"> Thru Ports Right Angle 	<ul style="list-style-type: none"> Single Double Cartridge

Key Features

- Helical gears for quiet operation
- Bi-directional rotation
- Option for integral gearbox
- Two-piece backplate design for flexible seal options
- Seal flexibility - single, double or cartridge
- Cast construction
- Flush/Drain ports on seal housing

- Options**
- Relief valve
 - Port locations
 - Outboard bearing
 - Internal relief valve

