

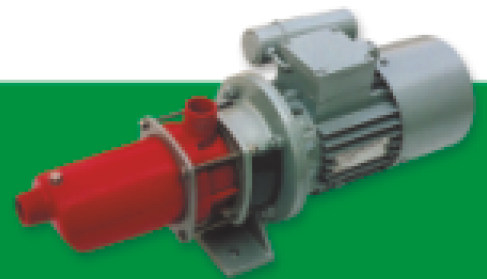
... moving fluids positively

The most versatile pump for

Light Industrial,

Agricultural and

Domestic applications

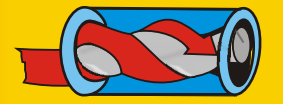


DC series

Progressive Cavity Pumping Principle

Roto's DC series pump comprises of a precision machined, single external helix metallic rotor and a double internal helix elastomer stator. Due to special profile of rotor and stator, a sealing line is formed along the axis of the rotor which is maintained either at static or at dynamic condition.

As the rotor turns within the stator, these cavities progress from suction to discharge end of the pump carrying the fluid.



Cavity movement through 180° of rotor rotation

Distinctive design features and benefits

- Positive displacement
- Stainless steel internal rotating parts
- Simple and easy to maintain
- Compact and light weight
- Self priming upto 6 m
- Discharge head upto 30m
- Silent and non-pulsating operation
- Standard IEC frame sized motors

Material options

- UV resistant Acetyl-co-polymes housing for pump sizes 11, 12 & 31
- Cast Iron casing for pump sizes 41 & 51
- Stainless steel hard chrome plated Rotor
- Natural, Nitrile, high Nitrile, EPDM, Chloro Sulphonated rubber & Fluoro elastomer stator

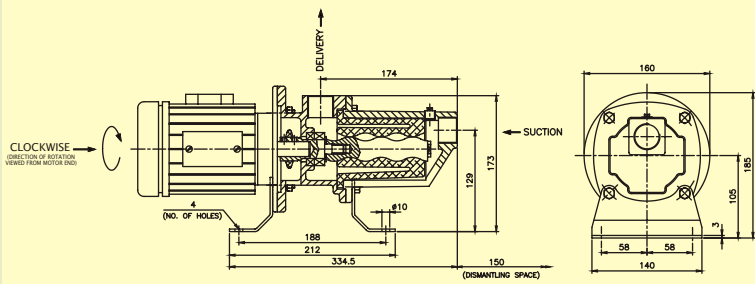
Performance Table of DC Pumps

Pump Type	Port Size	Pump Speed	Max. Suction Lift	Capacity & Power	Total head from all causes			
					0	10	20	30
DC-11	R1	1430	7 Meter	LPH	750	670	570	490
				KW	0.18	0.18	0.18	0.18
				GPM	3.3	2.9	2.5	2.1
				HP	0.25	0.25	0.25	0.25
DC-12	R1	2800	5 Meter	LPH	1500	1340	1140	980
				KW	0.25	0.25	0.25	0.25
				GPM	6.6	5.9	5.0	4.3
				HP	0.37	0.37	0.37	0.37
DC-31	R1	1430	6 Meter	LPH	1700	1520	1300	1120
				KW	0.37	0.37	0.37	0.37
				GPM	7.5	6.7	5.7	4.9
				HP	0.5	0.5	0.5	0.5
DC-41	Rp1-½	1450	4.6 Meter	LPH	4080	3860	3600	3400
				KW	0.55	0.55	0.55	0.55
				GPM	18	17	15.8	15.0
				HP	0.75	0.75	0.75	0.75
DC-51	Rp1-½	1450	4 Meter	LPH	7700	7500	7140	6700
				KW	1.1	1.1	1.1	1.1
				GPM	34.0	33.0	31.4	29.4
				HP	1.5	1.5	1.5	1.5

NOTE : Above Figures are approximate and tested with water at 30 degree celsius

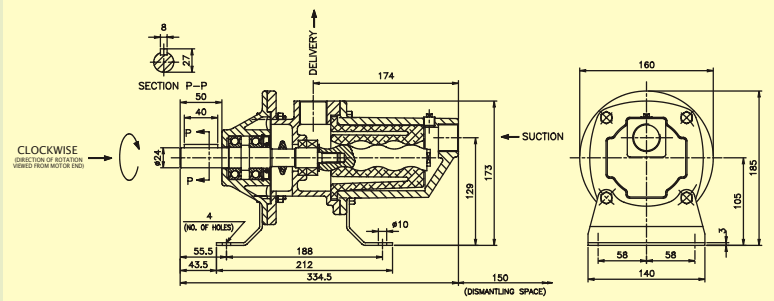
D I M E N S I O N A L D E T A I L S

DCCB-011/012/031 PUMP



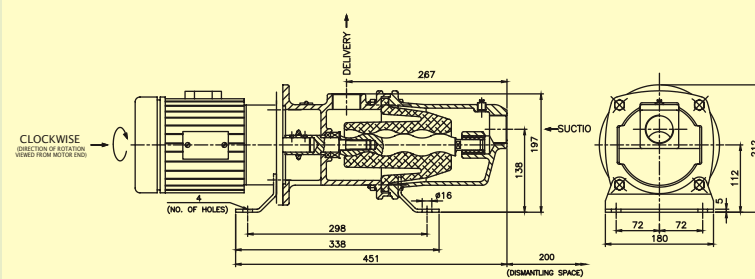
WEIGHT = 3 kg

DCAB-011/012/031PUM P



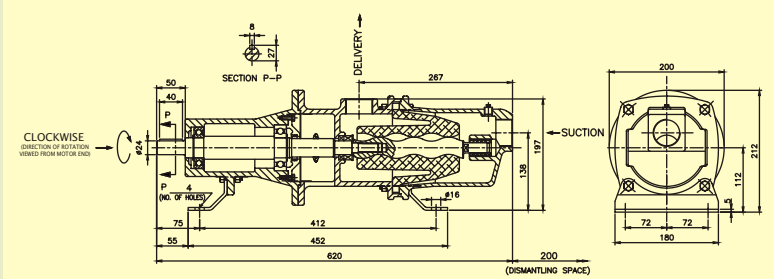
WEIGHT = 4 kg

DCCA-041 /051 PUMP



WEIGHT = 17 kg

DCAA-041 /051 PUMP



WEIGHT = 30 kg

* Excluding motor weight

ALL DIMENSIONS ARE IN MM

TYPICAL APPLICATIONS

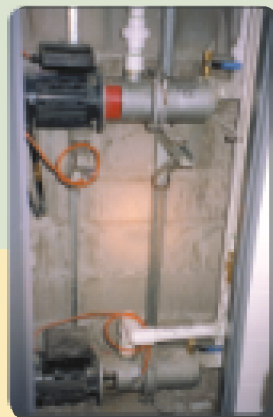
- Dosing chemicals and sampling in water treatment plants
- Transfer duties in food processing, winery and oils
- Transfer and filtering of chemicals and oils
- Circulation & injection of oils and chemicals
- Drainage of septic tanks and waste oil sumps
- Oil water separator
- Drawing water from wells, creeks or shallow bores
- Hosing down of cattle and cattle sheds
- Automatic water pressure systems
- Brine injection
- Circulation of water to feeding ponds and sprinkler systems.
- Solar water pumping



Battery of DC-31
Pumps for dosing application



DC-11
Portable barrel emptying pump



DC-41
Wall mounted pumps for dewatering



DC-12
Pump for sprinkler system



DC-51
Pump for hot water application



Roto's New Manufacturing Plant near New Delhi

Strong Manufacturing Base

Roto's new integrated manufacturing plant with an in-house Polymer unit and its other plant at Duty Free Zone are located in Noida, near New Delhi. Spread over 20,000 sq. meters, the plants have sophisticated machine tools & testing facilities that ensure a consistent world-class quality, matching today's demanding customer expectations. All critical components are manufactured in-house to ensure 100% quality conformance. Roto's state-of-the-art R&D facility translates concepts to prototypes and prototypes into final products. Headed by some of the finest pump professionals, it is equipped with a battery of solid H stations and sophisticated Test beds with Data Acquisition and Analysis System to ensure comprehensive validation of pump design.

Roto's world class products are available through a wide network of branches in India, its own Warehouse - Marketing offices at Australia and U.K. And a strong network of dedicated distributors spread across the globe.

Over 35 years of fluid engineering expertise

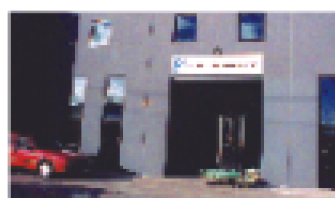
Roto's application expertise has been gained over three decades in providing fluid engineering solutions to over 4000 customers world - wide. The Roto excellence spanning over 1500 types of fluids, is a valuable asset for you to bank upon for more efficient and cost effective solutions to your fluid handling requirements.



U.K. Office



Plant at Duty Free Zone



Australia Office

ROTO PUMPS LTD.

Marketing Head Office

Roto House, Noida Special Economic Zone, Noida - 201305, India. Tel.: +91 120 2562240, Fax.: +91 120 2562561. E mail: contact@rotopumps.com Website: www.rotopumps.com

Australia

35, Pelmet Crescent, Thomastown, Victoria 3074, Tel.: +61 3 94620133 Fax.: +61 3 94620323 E mail: melb@rotopumps.com.au

United Kingdom

Unit 3, Greg Street, Reddish Stockport Cheshire SK5 7BS Tel.: +44 (0) 1614775511 Fax: +44 (0) 1614747900 Email: sales@rotopumps.co.uk

