

# rovatti pompe

POMPE AUTOADESCANTI PER MOTORE IDRAULICO

## SAI series

HYDRAULIC MOTOR DRIVEN SELF PRIMING PUMPS



### *FLESSIBILITÀ NELLE PRESTAZIONI*

Le prestazioni della pompa possono essere facilmente regolate agendo sull'alimentazione dell'olio idraulico del motore

### *VERSATILITÀ DI INSTALLAZIONE*

La pompa si adatta facilmente a molteplici tipi di installazione

### *SEMPLICE MANUTENZIONE*

Gli alberi pompa e motore separati agevolano ampiamente le operazioni di installazione e manutenzione

### *CUSTOMIZED PERFORMANCES*

Working speed and relevant pump performances are adjusted by hydraulic motor oil operating pressure

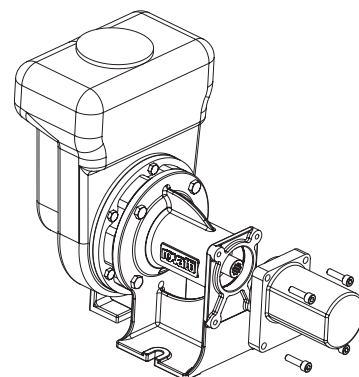
### *INSTALLATION VERSATILITY*

The pump is suitable for different applications and installations

### *EASY MAINTENANCE*

Separated pump and motor shafts simplify installation and maintenance

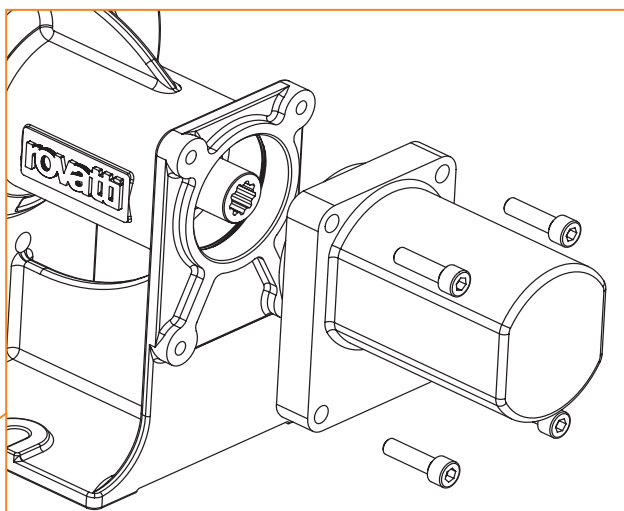
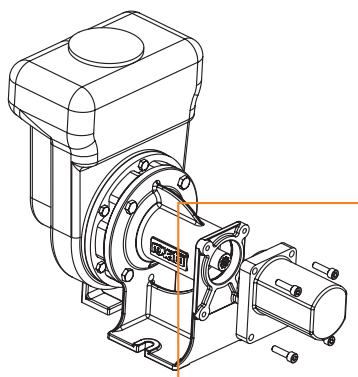
IDEALI PER IL RIEMPIMENTO DI CISTERNE E IL TRASFERIMENTO DI LIQUIDI  
THE IDEAL SOLUTION FOR TANK FILLING AND LIQUID TRANSFER



## ASSEMBLAGGIO / ASSEMBLING

Le pompe **SAI Rovatti** adottano una soluzione costruttiva dell'albero (9 teeth DIN 5482) che permette una semplice installazione del motore idraulico.

**Rovatti SAI** pumps have a special splined coupling shaft design (9 teeth DIN 5482) for easy installation of the hydraulic motor.

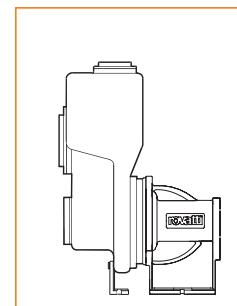


## LIMITI D'IMPIEGO / OPERATING LIMITS

Le pompe autoadescanti **Rovatti serie SAI** trovano largo impiego nell'irrigazione e nel trasferimento idrico in applicazioni agricole e industriali. Queste pompe sono particolarmente adatte al pompaggio di acqua pulita, sabbiosa o leggermente fangosa per il riempimento di cisterne e in impianti di trasferimento.

**Rovatti** self-priming centrifugal pumps **SAI series** are used in irrigation and water transfer in agricultural and industrial applications. These pumps are particularly suitable for pumping clear, sandy and slightly muddy waters in tank filling and transfer pipeline.

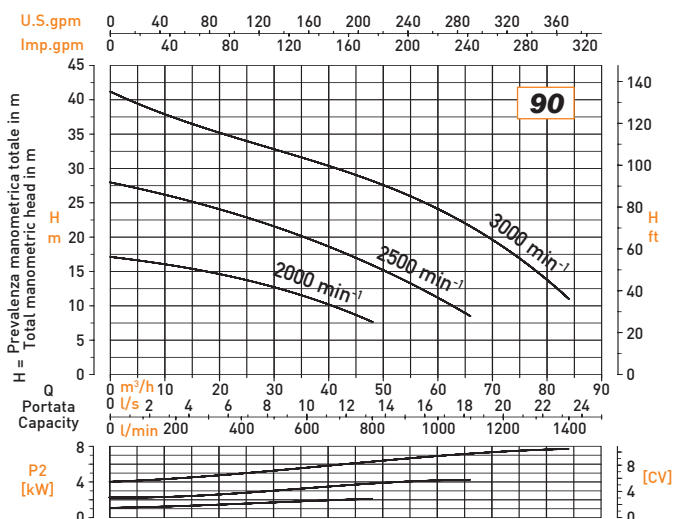
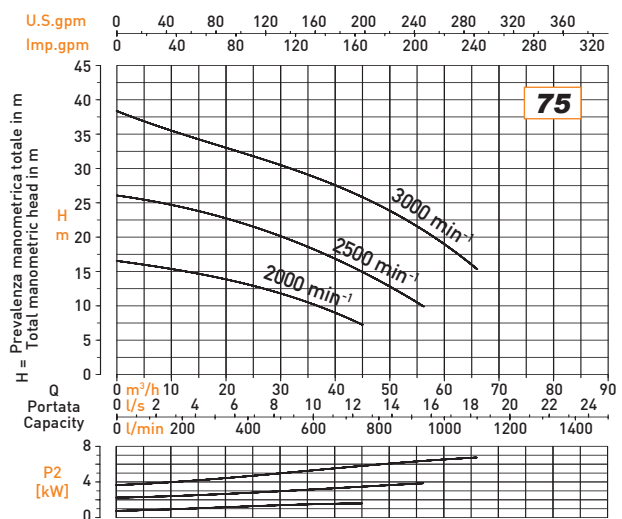
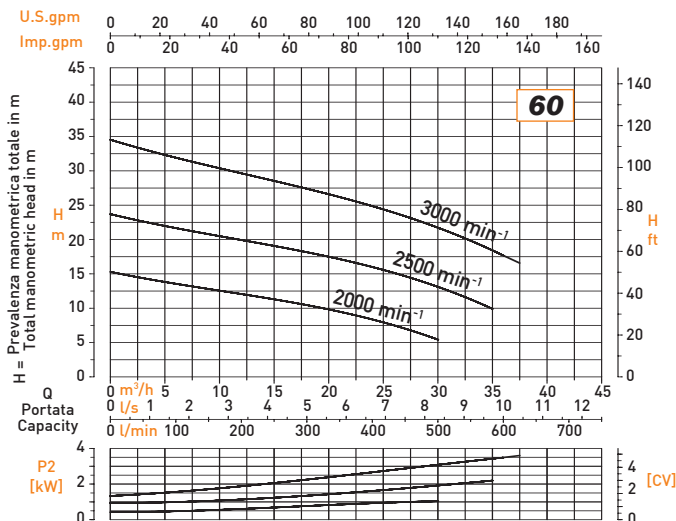
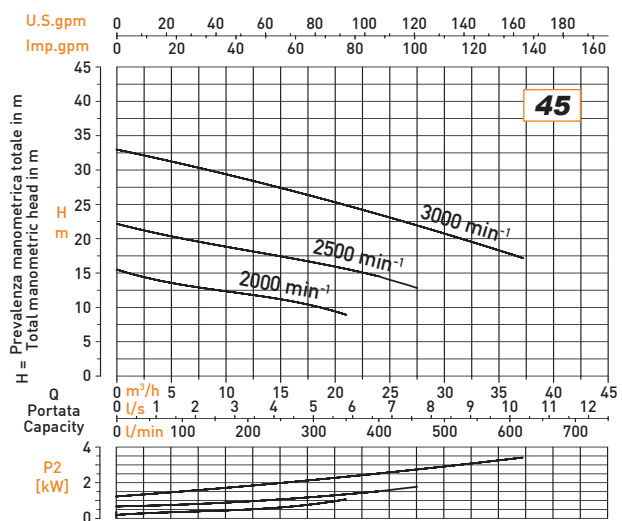
Portata massima / Maximum capacity	80 m <sup>3</sup> /h
Prevalenza massima / Maximum head	38 m
Contenuto massimo sostanze solide / Maximum solid content	100 g/m <sup>3</sup>
Temperatura massima liquido pompato / Maximum temperature of pumped liquid	≤ 60°C
Tempo massimo di funzionamento a portata nulla / Maximum running time with closed delivery (Q= zero)	2 min



## MATERIALI / MATERIALS

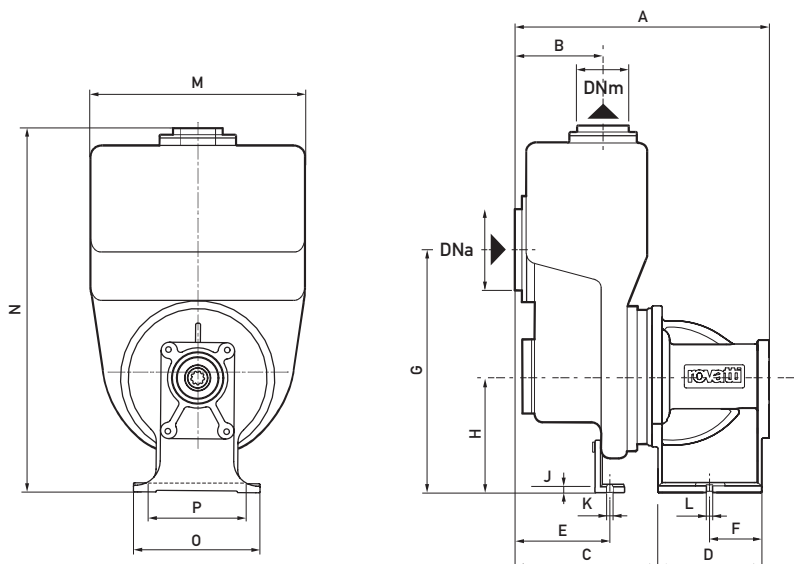
DESCRIZIONE / DESCRIPTION	MATERIAL / MATERIAL	ESECUZIONI SPECIALI / SPECIAL EXECUTIONS
Corpo pompa / Pump body	Ghisa / Cast iron	-
Girante / impeller	Ghisa / Cast iron	Ghisa trattamento cataforesi / Cast iron cathodoresis threaded
Albero pompa / Pump shaft	Acciaio inox / Stainless steel	-
Supporto cuscinetti / Bearings housing	Ghisa / Cast iron	-
Tenuta meccanica / Mechanical seal	SiC / SiC / NBR	SiC / SiC / VITON
Guarnizioni / Gaskets	NBR	VITON

## CARATTERISTICHE / PERFORMANCES

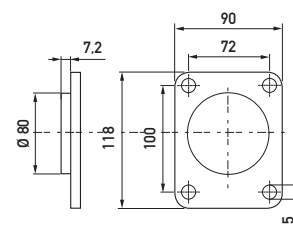


## DIMENSIONI DI INGOMBRO E PESI / OVERALL DIMENSIONS AND WEIGHTS

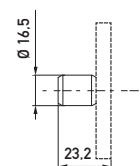
(Dimensioni in mm / pesi in Kg - Dimensions in mm - weights in Kg)



### MOTOR FLANGE CONNECTION

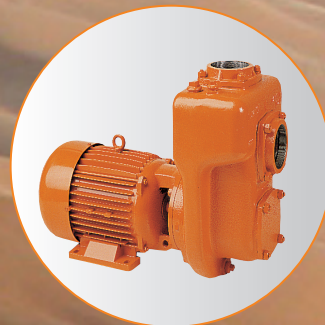
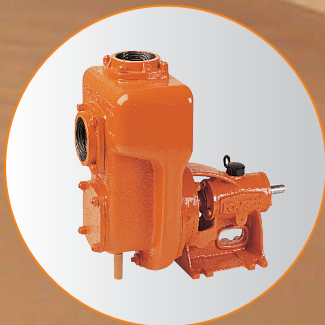


### MOTOR SHAFT CONNECTION



Tipo Type	DNa	DNm	A	B	C	D	E	F	G	H	J	K	L	M	N	O	P	Tipo Type
SAI45	1" 1/2	1" 1/2	330	109	87	125	104	63	270	140	6	20	12	230	404	155	125	27
SAI60	2"	2"	330	109	87	125	104	63	270	140	6	20	12	230	404	155	125	28
SAI75	2" 1/2	2" 1/2	387	124	129	125	44	63	300	140	6	20	12	270	457	155	125	39
SAI90	3"	3"	387	124	129	125	44	63	300	140	6	20	12	270	457	155	125	40

# Carrying liquids wherever you need



**rovatti pompe**

**Rovatti A. & Figli Pompe SpA**  
42042 FABBRICO (Reggio Emilia) - ITALIA  
Tel. +39 0522 665000 Fax +39 0522 665020  
E-mail [info@rovatti.it](mailto:info@rovatti.it) [www.rovatti.it](http://www.rovatti.it)