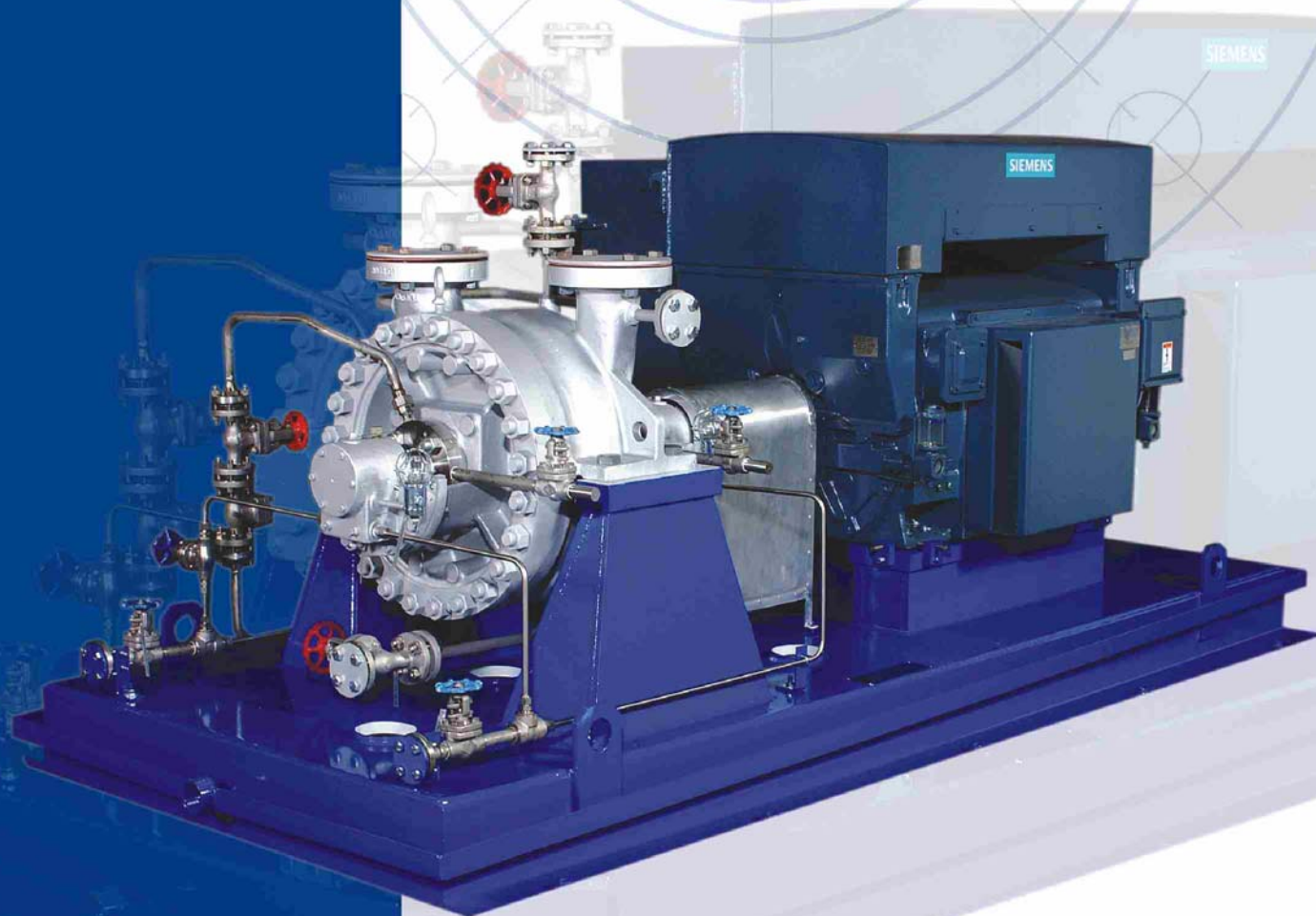




RON

Heavy Duty, Two stage,
API 610 Process Pump



RON

Process Pump

For over 50 years the name Ruhrpumpen has been synonymous worldwide with innovation and reliability for pumping technology.

The pumps of the RON model are heavy-duty centrifugal process pumps for universal applications.

The pumps meet the stringent specifications of API Standard 610 and reflect the many years of our experience in the design, manufacture, quality assurance and operation of process pumps under heavy duty conditions. These pumps also comply with the requirements specified in ISO 9905.

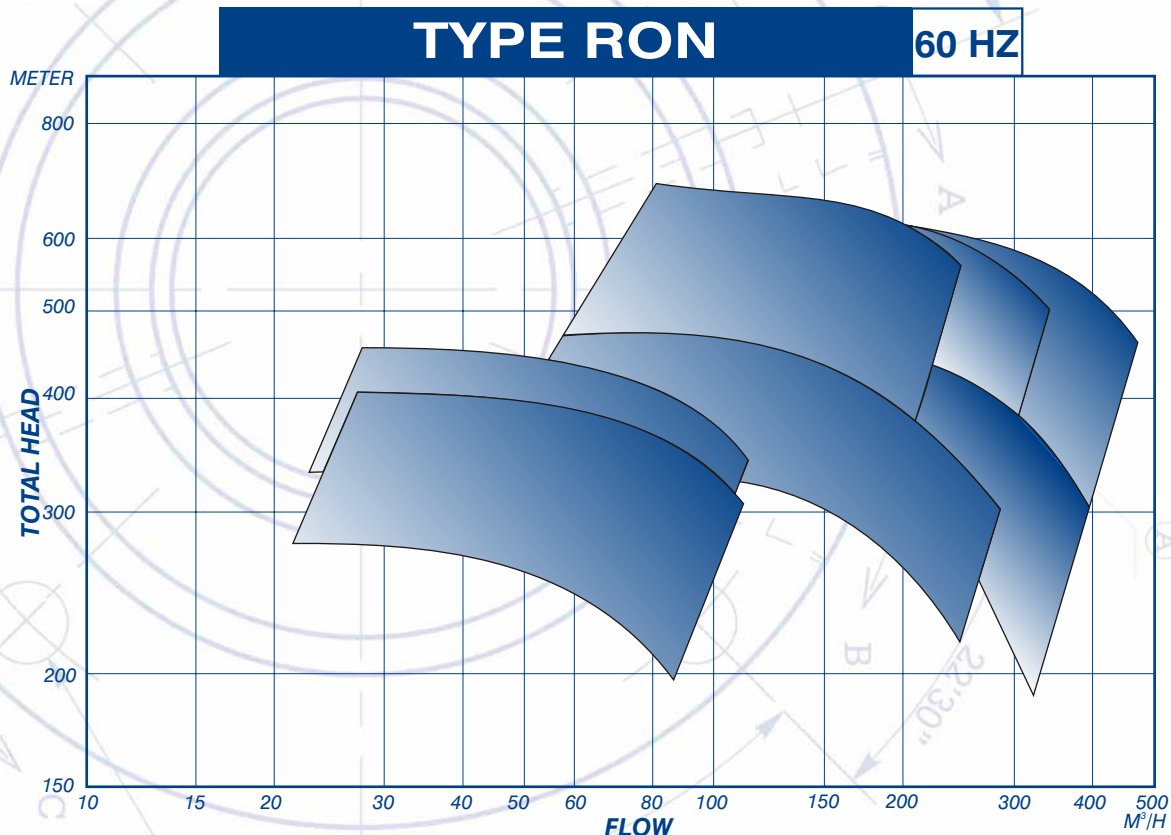
Qualified specialists in all departments ensure the pumps and equipment from our facilities are able to operate under the most severe conditions.

Intensive research and development ensures that the products of Ruhrpumpen are continuously improved to meet the latest technical requirements.

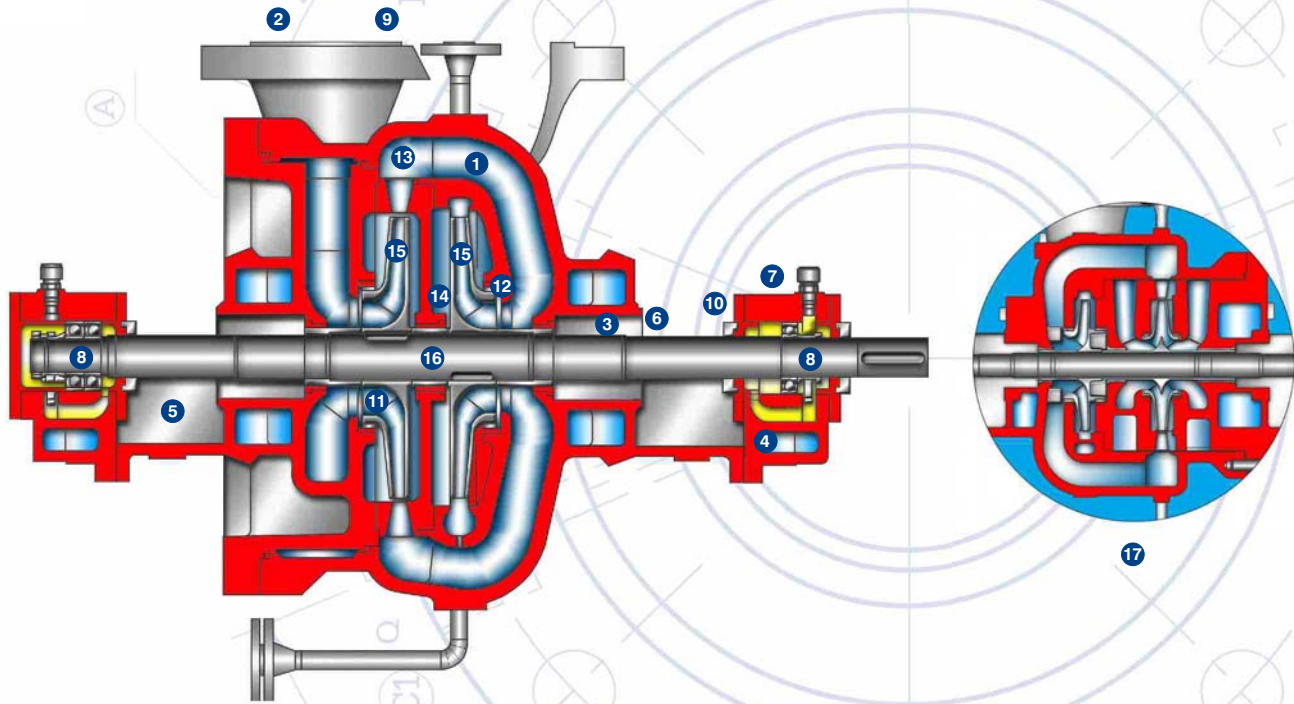
It is only possible to achieve these aims by means of highly sophisticated CNC controlled machines in our modern machine shop, supplemented by our test and development departments as well as the latest industry standard inspection and control procedures. All done in our ISO 9001 certified facilities.

The application of modern, reliable methods, data processing and sophisticated software with high performance, state of the art IT offers our customers high reliability and speed in all working processes, from planning and production to the delivery of spare parts.

The instant availability of spare parts, together with first class service, ensures customers that they have selected the right partner.



API 610 Compliant



- 1 Six radially split pump casing sizes centerline mounted. Suction and discharge branches are arranged top-top.
- 2 All applicable branch flange connections available. Flange connection sizes to ANSI B 16.5.
- 3 Amply dimensioned shaft sealing chamber for housing all commercial mechanical seal designs.
- 4 For higher pumping temperature cooling of the shaft sealing chambers and bearing housings can also be provided.
- 5 Ring oil ball bearings with Trico oilers are standard.
- 6 Shaft deflection less than 0.03 mm in the area of the mechanical seal due to the ample pump shaft dimensions and the balancing of the hydrodynamic radial loads.
- 7 Single-piece bearing housing, air cooled. Alternatively, cooling by integrally cast cooling channels with external piping connections for cooling water pipes according to API 610, Annex D.
- 8 Anti-friction bearings with a service life of more than 25,000 h even under arduous conditions.
- 9 Due to the top-top arrangement of the suction and discharge branches on the casing, inspection and maintenance of the RON pumps do not present any problems.
- 10 Wear-free labyrinth Inpro/Seal™ oil return bores, alternatively radial sealing rings.
- 11 Impellers with a high accuracy of shape and excellent surface finish, resulting in high efficiencies and low NPSH values.
- 12 Exchangeable impeller and case wear rings. Clearances according to API 610, latest edition.
- 13 The one-piece diffuser ensures proper balancing of the radial forces and thus helps to reduce the bearing load.

Product Description

Horizontal arrangement.
 Process design.
 Modular design system.
 Two stage.
 Single suction, opposed impeller arrangement; for low NPSH-value double suction first stage impeller on higher capacity range.
 Centerline mounted.
 API 610.

Broad Application Range

Refineries.
 Oil fields.
 Petrochemical plants.
 Chemical plants.

Performance Data

Capacity	Q 18 to 800 m ³ /h	75 to 3520 gpm
Head	H 170 to 650 m	560 to 2130 ft
Discharge flange size	2½ to 10š	
Max. Pressure	96 bar	1390 psig
Temperature	to 400°C	750°F

- 14 Exchangeable interstage bushing in the diffuser. Clearances according to API 610.
- 15 Balancing of the axial forces by symmetrically opposed arrangement of the impellers.
- 16 Low-vibration operation due to dynamic balancing both of the individual impellers and the complete rotor.
- 17 Single-acting, balanced mechanical seal of cartridge type. Double acting is also possible.

Other Ruhrpumpen Products



Ruhrpumpen, Inc.
4501 South 86th East Ave.
Tulsa, Oklahoma 74145 USA
Phone: 918-627-8400
Fax: 918-624-2471
e-mail info@ruhrpumpen.com

Ruhrpumpen GmbH
Stockumer Strasse 28 58453 Witten/Germany
P.O. Box 63 09 58432 Witten/Germany
Phone: (+ +49) 23 02/661-03
Fax: (+ +49) 23 02/661-3 03
e-mail: info@ruhrpumpen.de

Ruhrpumpen, S.A.
Nöquel No. 9204 Ciudad Industrial Mitras,
García, N.L. México 66000
Phone: (+52)(81) 8158-5500
Fax: (+52)(81) 8158-5501
e-mail: wdm@corporacioneg.com

www.ruhrpumpen.com
e-mail: info@ruhrpumpen.com

A/August/02



Specialist for Pumping Technology

A
Corporación 
Company

For more information:

