

OPERATING LIMITS

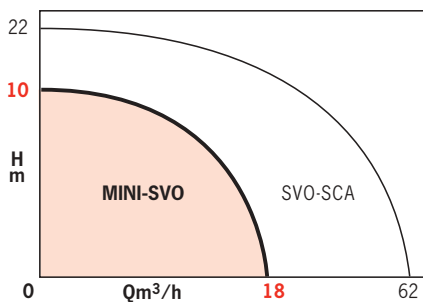
| | |
|----------------------|----------------------|
| Flow rates up to: | 18 m ³ /h |
| Head up to: | 10 m CL |
| Temperature range: | 0 to + 40°C* |
| Max immersion depth: | 5 m |
| Max free passage: | Ø 35 mm |
| ND discharge port: | G1 1/2 |

* max 60°C during 5 mn

MINI-SVO

SUBMERSIBLE PUMPS

Lifting of domestic waste
and sewage water
2 pole - 50 Hz



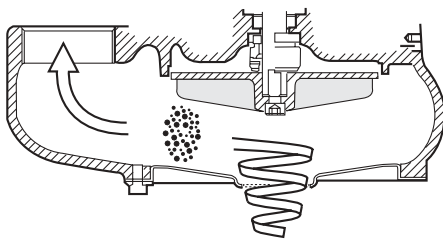
APPLICATIONS

Lifting of domestic waste water:

- sewage water
- rain water loaded with mud and non rigid particles with traces of hydrocarbons or washing products.

For:

- Housing.
- Garages.
- Parking lots.
- Restaurants.
- Boiler rooms.



Roue VORTEX



MINI-SVO-204-0.5T



MINI-SVO-204-0.6MF

MINI-SVO

ADVANTAGES

- Suited for small sumps: small size and vertical discharge port
- Reliable: double sealing (mechanical seal + lip seal) and vortex impeller
- Safety in case of motor out-of-water occasional operation: oil bath motor
- Long life: tough materials
- Automatic operation: integrated float switch (single-phase version) ; optional (three-phase version).
- No particular maintenance. Easy impeller cleaning thanks to fast disassembly. Low weight.
- Supplied ready for fitting (single-phase version)
- Quiet operation

DESIGN

• Hydraulic part

Single block, centrifugal single-stage impeller.
Axial suction under pump casing.
Vertical discharge.
G1½ threaded port.
Vortex impeller.
Double sealing at shaft passage by mechanical and lip seals.

• Motor

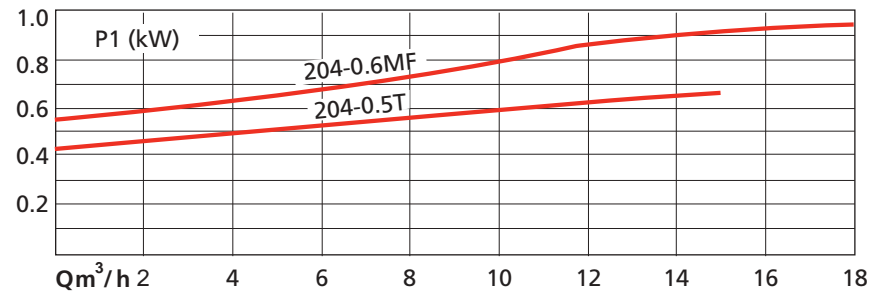
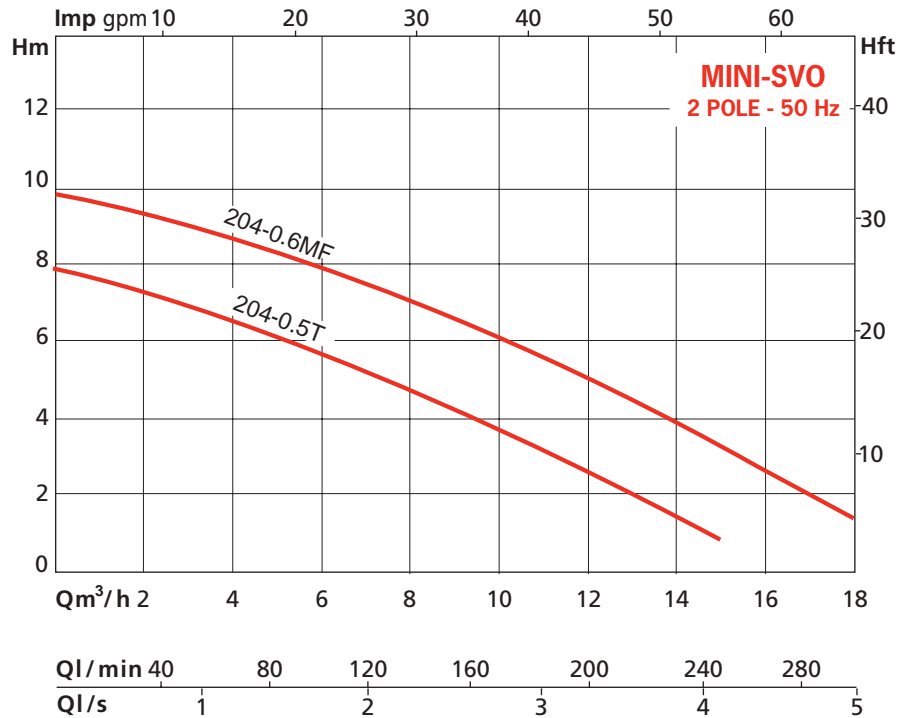
Submersible to semi-submersible
Oil bath.

Single-phase version: automatic start and stop by float switch, thermal protection by automatic reset integrated probe, condenser integrated.

Three-phase version: mandatory thermal protection to be added.

Rotation speed : 2900 rpm
Windings, 1-phase : 230V
3-phase : 400V
Frequency : 50 Hz
Insulation category : B
Protection index : IP 68

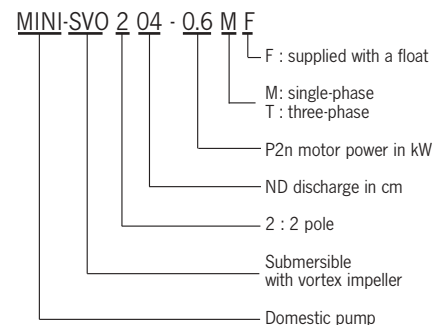
HYDRAULIC PERFORMANCES



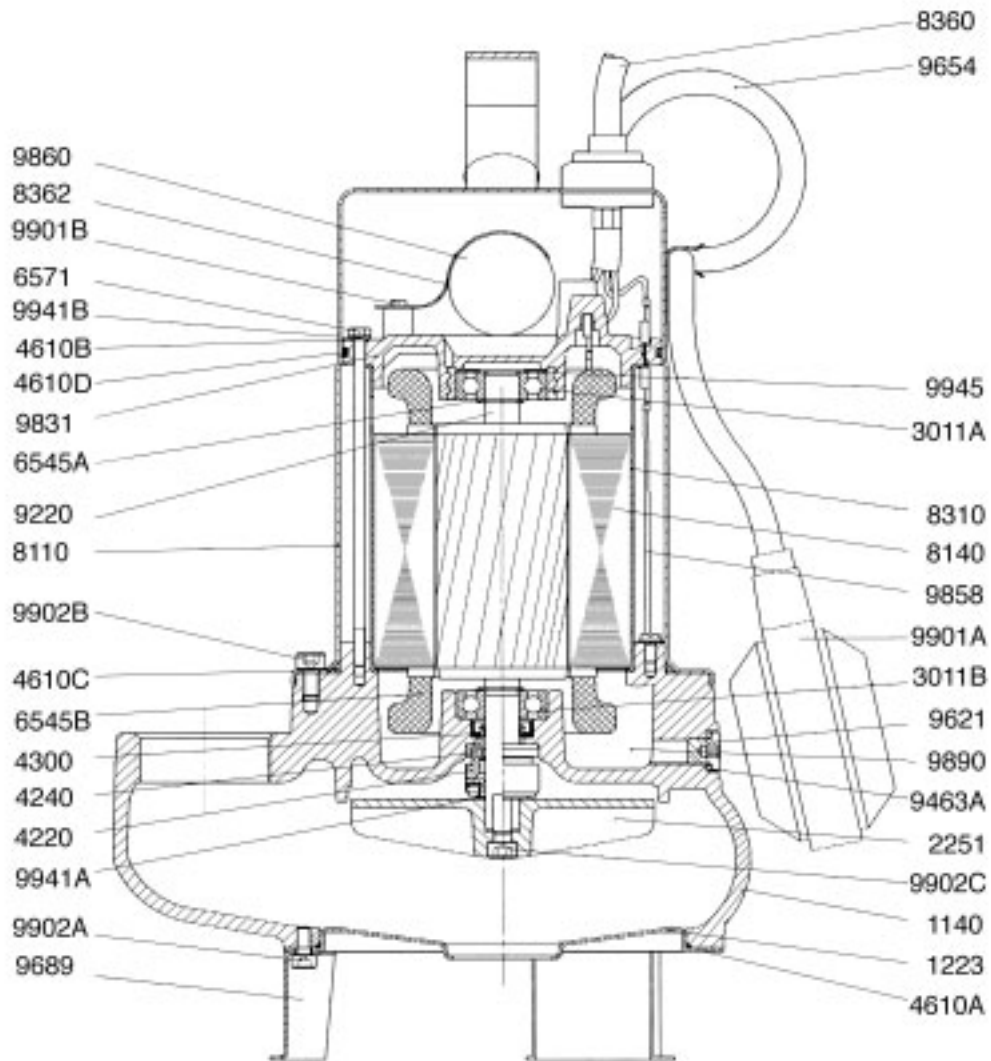
STANDARD CONSTRUCTION

| Main parts | Material |
|-----------------|---------------------|
| Pump casing | Cast iron GJL200 |
| Motor sleeve | Stainless Steel 304 |
| Motor shaft | Stainless Steel 416 |
| Suction lid | Stainless Steel 304 |
| Vortex impeller | Composite |
| Mechanical seal | Carbon/alumin |

IDENTIFICATION



SECTIONAL VIEW (MINI-SVO-204 06MF)

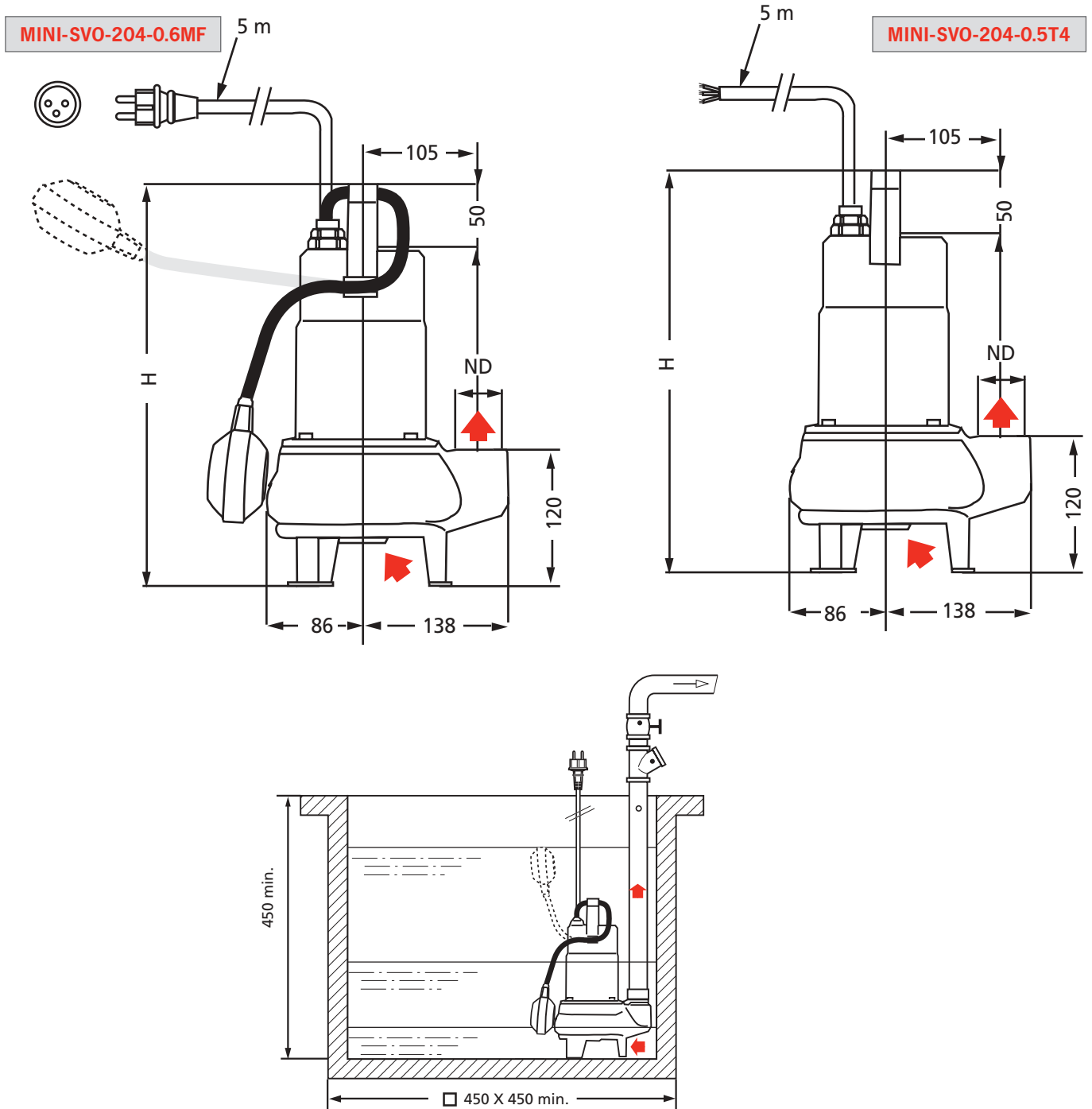


PARTS LIST

- | | | |
|--|---|--|
| 1140 - Discharge casing | 6571 - Assembly strut | • 9860 - Condenser |
| 1223 - Suction lid | 8110 - Motor sleeve | 9890 - Oil |
| • 2251 - Vortex impeller | 8140 - Stator | 9901A - Ground screw |
| 3011A - Upper bearing | 8310 - Stator sleeve | 9901B - Jumper fitting screw |
| 3011B - Lower bearing | • 8360 - Supply cable with plug and connector | 9902A - Bracket foot fitting screw |
| • 4220 - Mechanical seal rotating part | 8362 - Jumper | 9902B - Motor sleeve fitting screw |
| • 4240 - Mechanical seal fixed part | 9220 - Rotor shaft | 9902C - Wheel fitting screw |
| • 4300 - Sealing lip ring | • 9463A - Sealing ring under 9621 | 9941A - Mechanical seal support washer |
| • 4610A - O-ring (between 1140 and 1223) | 9621 - Oil chamber cap | 9941B - Washer under strut 6571 |
| 4610B - O-ring (under 9941B) | • 9654 - Float cable | 9945 - Elastic washer |
| • 4610C - O-ring (between 1140 and 8110) | • 9689 - Support foot | |
| • 4610D - O-ring (between 9831 and 8110) | 9831 - Rear bearing flask | |
| 6545A - Upper clip | 9858 - Ground wire | |
| 6545B - Lower clip | | |

(•): recommended spare parts

ELECTRICAL DATA AND DIMENSIONS



| ORDER REFERENCE | P1 kW | I (A) 1 ~ 230V 3 ~ 400V | Capacitor μ F | NDD | NDS \varnothing mm | H max. mm | cable L m | Mass kg | |
|--------------------|-------|----------------------------|----------------------|-----|-------------------------|--------------|--------------|------------|------|
| MINI-SVO-204-0.5T4 | 0.68 | - | 1.9 | - | G1 $\frac{1}{2}$ | 35 | 352 | 5 | 10 |
| MINI-SVO-204-0.6MF | 0.94 | 4.7 | - | 14 | G1 $\frac{1}{2}$ | 35 | 367 | 5 | 11.8 |

MINI-SVO

ACCESSORIES



- Safety switch 439-E24D
Ref.: 016894



- NIVO 430
Sewage water with cable 10 m
Ref.: 4027319



- EUROFLOT 423VR
Clear water - (cable 5 m)
Ref.: 4048052



- Yn 4205 Control panel
(2-pumps installation) - Ref.: 4035803



- Yn 7100 Control panel
(1 & 2-pumps installation) - Ref.: 4061607

RECOMMENDED ACCESSORIES

Single and three-phase motors

- Cable (not supplied by SALMSON).
- Ball operated check valve
Ref.: PRC-4004712.
- Isolating valves
Ref.: 4015489
- "ALARMSON" overflow sound alarm
Ref.: 4051111
- Dual manifold for the installation of 2 pumps (not supplied by SALMSON).
- Regulator cable passage wall console
Ref.: 4013188

MINI-SVO three-phase motor

Clear water lifting

- 1 pump installation:
 - Yn 7100 control panel
+ 2 EUROFLOT 423R
 - Safety switch with "439-E24D" 24V transformer (ref.: 016894) connected with a "EUROFLOT 423 R" type float switch.

Sewage water lifting

- 1 pump installation (3-phase):
 - Yn 7100 control panel + 2 float type NIVO430
 - Yn 4100 control panel + 3 float type NIVO430
- 2 pumps installation:
 - Yn 4205 control panel + 4 level regulators "NIVO430".

FEATURES

a) Electrical

- Single-phase 230V - 50 Hz
Permanent condenser and thermal protection by probe integrated to the pump.
Network connection using a standardized male plug, 2 pole + ground.

- Three-phase 400V - 50 Hz
Mandatory motor protection to be added
 - either using a safety switch
Ref.: 439-E24
 - or a control panel
Ref.: Yn 4000 with level control panels.

b) Installation

- Fixed installation in a sump
- Motor shaft always vertical
- Rigid piping

c) Packaging

- SINGLE and THREE-phase pumps supplied packaged under recyclable cardboard box, with 5m cable and handle.
Single-phase pump supplied with float switch and electric plug.

d) Maintenance

- See (•) recommended spare parts or following kits:

- "Sealing" kit: mechanical seal + lip ring and gaskets (all versions).
Ref.: 4051807

- "Cables and float" kit: supply cable with plug float cable and connector, all factory-mounted. (Three-phase version).
Ref.: 4051816

- "Electrical supply cable" kit: electrical supply cable without plug + factory assembled connector. (Three-phase version)
Ref.: 4051820