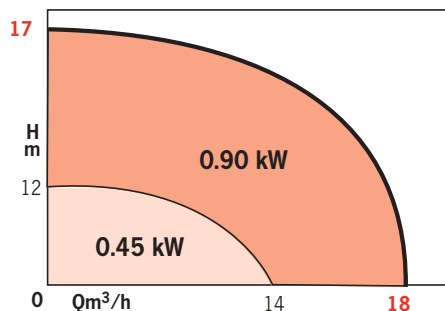


OPERATING LIMITS

Flows rates up to:	18 m ³ /h
Heads up to:	17 m
Temperature range:	+ 3° to 35°C
Free passage:	10 mm
ND of discharge orifice	40



• Euroflot 423 - Float switch



• SBS 204 - Pump for fixed and mobile installations



• Yn 4200 - Control box (2 pumps)



• Alarmson

SBS 2-204

SUBMERSIBLE PUMPS

Lifting of wastewater containing little pollution
50 Hz

APPLICATIONS

Domestic or small-scale commercial use

Fluids: Ph around 7

Maximum chlorine content: 150 mg/litre.

- Lifting of domestic wastewater, valve water, water containing sludges and particles, etc.
- For housing, garages, car parks, etc.

- Draining of boiler room sumps.
- Emptying of cellars and pools.
- Whenever the total head is high (geometric height and distance).
- Drying of cellars and land.
- Discontinuous operation – pump completely submerged.

SBS 2-204

ADVANTAGES

- Stainless materials.
- Composite hydraulic.
- 1.4301 stainless steel motor.
- Designed for domestic and small-scale commercial use.
- G1 1/2 threaded direct hydraulic connection.
- Coupling to connect and protect the body.
- Supplied with 2 couplings.
- Max. particle size: 10 mm.
- Double tightness through mechanical seals fitted in tandem.

- Outside temperature: 3° to + 40°C

Intermittent operation:

- S3: 25% (2.5 min. of operation, 7.5 min. break).
- S1: 200 operating hours per year.
- Recommended number of start-ups: 20/hr.
- Maximum number of start-ups: 50/hr.
- Nominal diameter of the discharge coupling: 1 1/2".
- Immersion depth: 5 m owing to the length of the cable.

DESIGN

• Hydraulic part

Single-piece, common pump-motor shaft.
Single-stage, vertical axle.
Semi-open impeller.
Vertical discharge.
Supplementary chamber filled with oil.

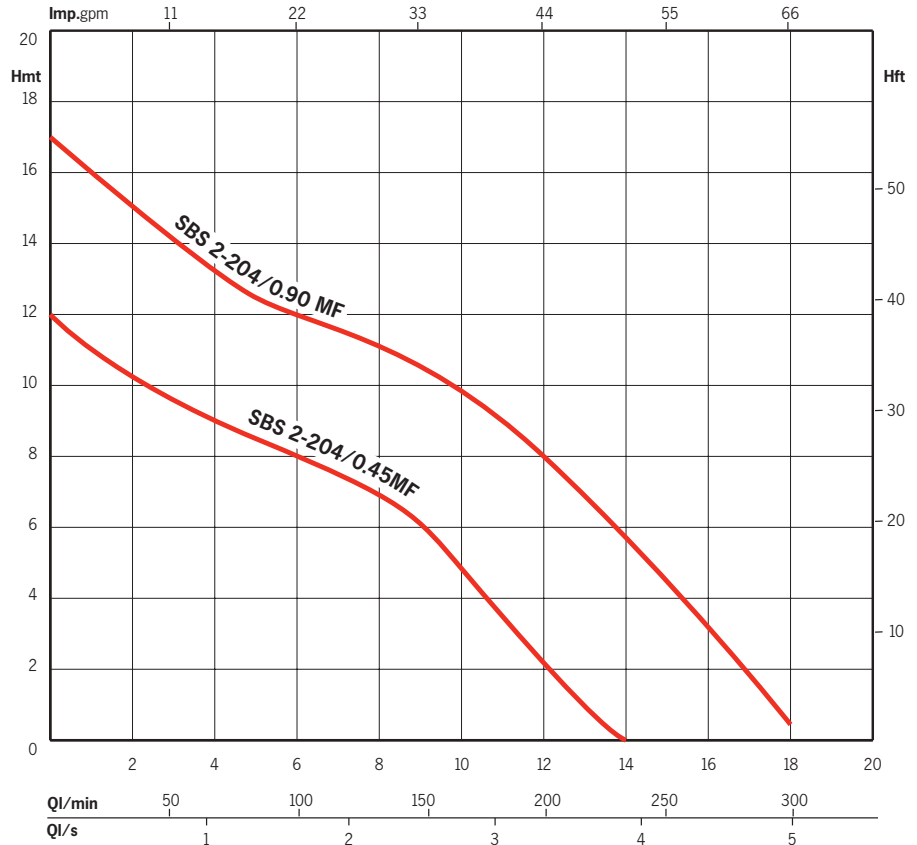
• Motor

Motor protected from overloads by thermal protection.

Cable: type H07 RN-F 7G1.5

Speed : 2900 rpm
Winding 1-phase : 230 V
Frequency : 50 Hz
Insulation class : F (155°C)
Protection index : IP68 at 10 m

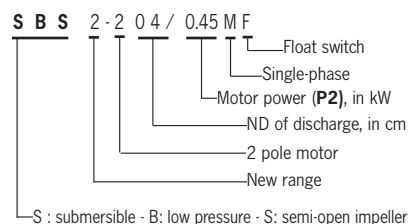
HYDRAULIC PERFORMANCES AT 2900 RPM



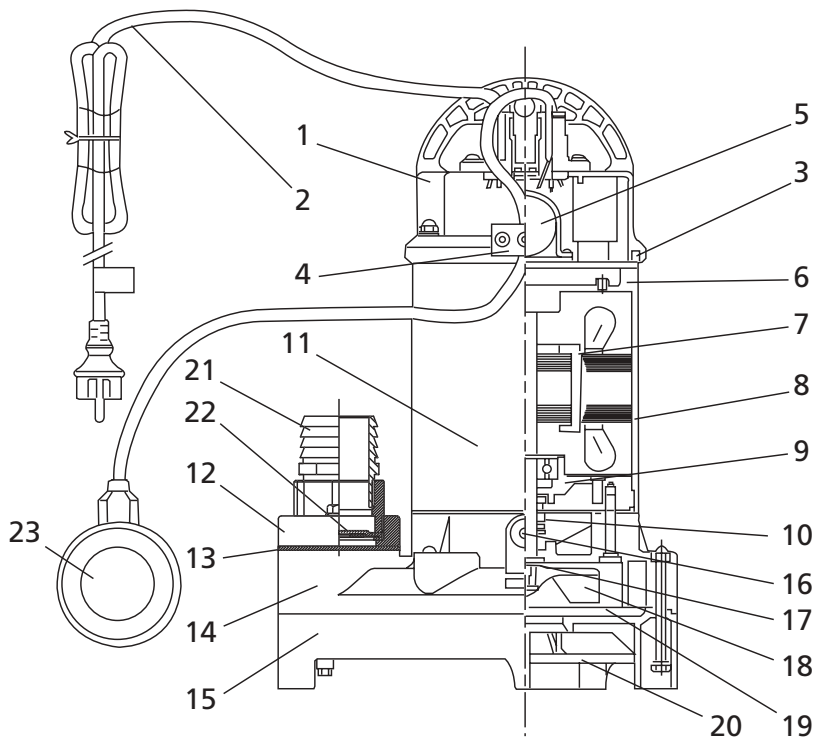
STANDARD CONSTRUCTION

Main parts	Material
Hydraulic	Glass fibre reinforced polypropylene
Base	Glass fibre reinforced polypropylene
Impeller	PBTP polybutylenterephthalate
Two-metal shaft	SM 20C/sts 401
Motor sleeve	Stainless steel (1.4301)
Seal	NBR 610
Mechanical seal	Si Carbide/Si Carbide.

IDENTIFICATION



SECTIONAL DRAWING



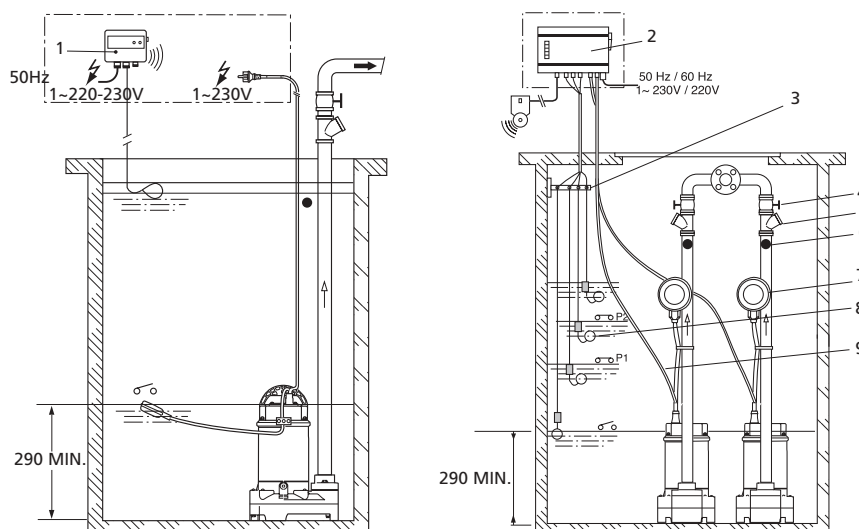
PARTS LIST

- 1 – Cover with handle
- 2 – Complete pump cable
- 3 – Cover seal
- 4 – Cable holder
- 5 – Capacitor
- 6 – Bearing (upper)
- 7 – Complete rotor
- 8 – Stator
- 9 – Bearing (lower)
- 10 – Mechanical seal
- 11 – Motor sleeve
- 12 – ND 40-11/2" discharge counterflange
- 13 – Flange seal
- 14 – Upper part of pump body
- 15 – Lower part of pump body
- 16 – Oil drain screw with seal
- 17 – Washer
- 18 – Impeller
- 19 – Body seal
- 20 – Strainer
- 21 – ND40 grooved attachment
- 22 – Check valve
- 23 – Float switch

INSTALLATION DIAGRAMS

FIXED INSTALLATION

Pump with mounting leg, a complete lifting system and a control and protection unit with 3 level regulators for 1 pump or 4 regulators for 2 pumps.

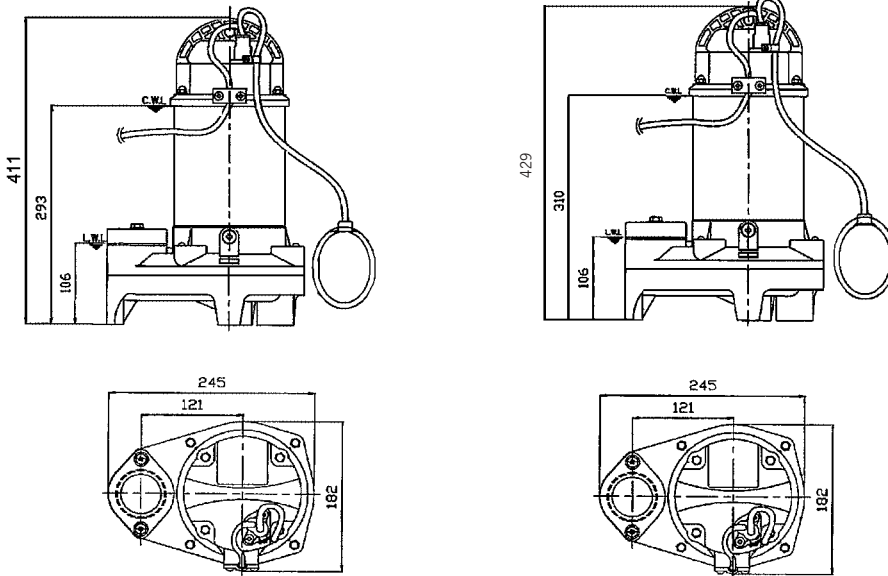


PARTS LIST

- 1 – Alarmson
- 2 – Control box (1 or 2 pumps)
- 3 – Wall console
- 4 – Isolation valve
- 5 – Check valve
- 6 – Air vent hole to be created
- 7 – Original float switch fixed in operating position
- 8 – Level regulator with cable
- 9 – Power supply cable

SBS 2-204

ELECTRICAL DATA AND DIMENSIONS



Order reference	Item n°	P2 kW	P1 kW	I.(A) 1 x 230V	Capacitor μF -5 ou +1	Cable Ømm ²	Mass kg
SBS 2-204/0.45MF	2042904	0.45	0.454	2.3	18 μF/400V	1	15
SBS 2-204/0.90MF	2042905	0.90	0.935	4.3	24 μF/400V	1	13

ACCESSORIES SUPPLIED WITH THE PUMP



- 1"1/2 socket coupling for flexible pipe



- 1"1/2 threaded connection coupling for flexible pipe

EXAMPLES OF RECOMMENDED ACCESSORIES



- Alarmson Ref.: 4061111



- Quick coupling kit for flexible pipe Ref.: 4027322

FEATURES

a) Electrical

230 V - 50 Hz single-phase.
Built-in thermal protection protects the pump against abnormal operation owing to use without water or too frequent start-ups.

b) Assembly

- Flooded sump installation:
 - fixed with rigid piping,
 - mobile with siamese coupling and flexible pipe.

- Connection to the system either via G1"1/2 threaded coupling or socket coupling.

c) Packaging

— Pump supplied in recyclable cardboard packaging with a 4 conductor electric cable 5m long and a mains earth connection.

- accessories :** built-in check valve and float switch,
1"1/2 threaded connection coupling,
1"1/2 socket coupling for flexible pipes.

RECOMMENDED ACCESSORIES

- Protection disconnector
- G1"1/2 check valve (if the pump valve is replaced)
Ref.: 4013153
- Full flow isolation valve
Ref.: 4015489
- Control and protection unit for 2 pumps: type Yn 4200
- Euroflot 423 switch (for system with Yn 4200)
- Quick coupling kit
Ref.: 4027322
- G1"1/2 flexible discharge pipe
Ref.: 018826
- Alarmson - **Ref.: 4051111**
- Raceway wall bracket - **Ref.: 4013188**
- Lifting chain for systems using flexible pipes
Ref.: 4031693