



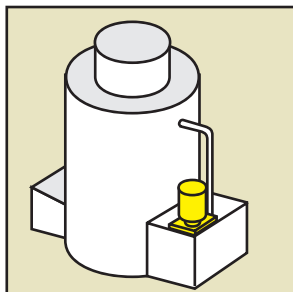
HIGH EFFICIENCY LOW ENERGY USAGE

- **Flows to 650 U.S. GPM or 115 FT. TDH @ 60 Hz (2050 l/m or 24m @ 50 Hz)**
- **Non-metallic solution contact CPVC construction** (See a chemical resistance chart)
- **Can run dry indefinitely, no bearings**
- **Heavy duty PTFE vapor seal**
Protects motor bearing and end bell.
- **In-tank or out-of-tank**
- **Chemical duty motor (7.5 - 20.0 HP)**
Sealed oversized bearings. Cast iron end bells with vapor seal. Corrosion resistant epoxy enamel finish. Stainless steel nameplate. Service factor 1.15.
- **Includes PVC pump mounting plate**
- **Standard column length 19"**

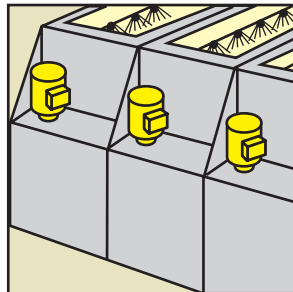
The **Series 'EHM' Vertical Pump** features a cantilevered CPVC sleeved stainless steel shaft which eliminates bearings and conventional pump seals, resulting in a pump that can run dry without damage. A compound impeller prevents liquid from rising in the column while the fully-enclosed bottom impeller provides high hydraulic efficiency at low horsepower.

The pump drive shaft is stainless steel and is protected by a heavy duty CPVC impeller sleeve assembly. A vapor seal between the rotating shaft and pump column protects the motor and motor bearings. The complete pump assembly features non-metallic solution contact.

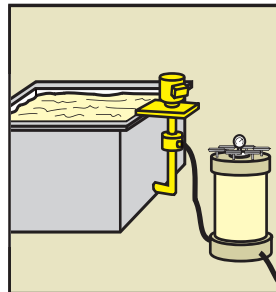
The high efficiency impeller provides "pump-down" capabilities to 9 ft. below the inlet when using a suction extension. Viton® "O"-rings, discharge pipe assembly and suction strainer are available as options.



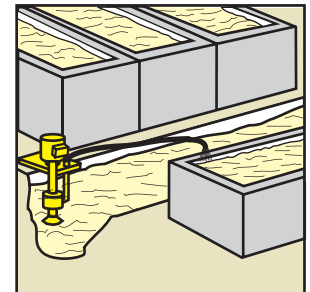
FUME SCRUBBING



PCB WET
PROCESSING



OUT OF TANK
PUMPING and FILTRATION

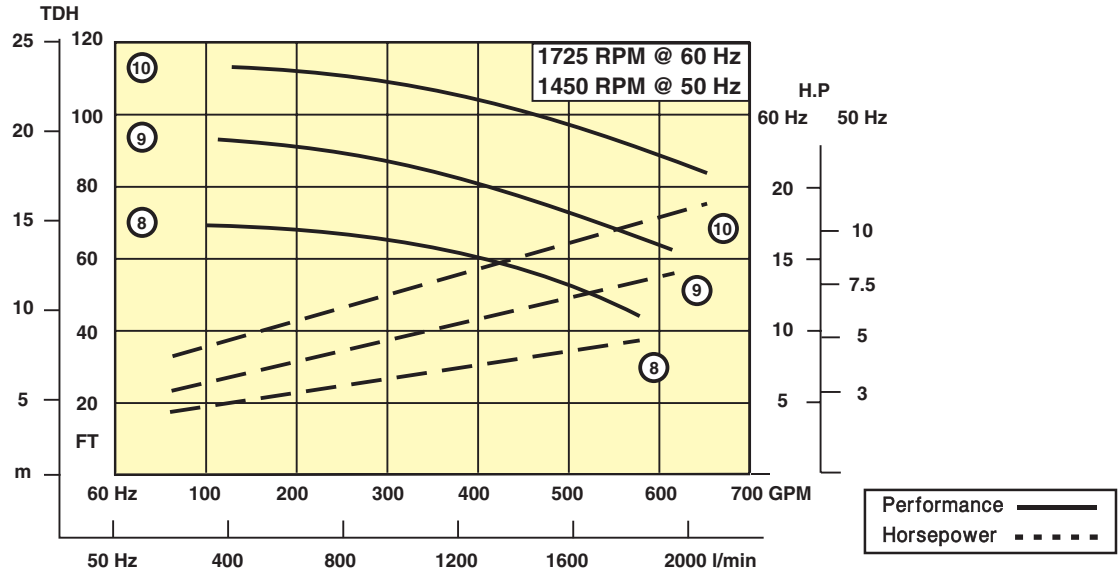


SUMP DRAINING
and WASTE TREATMENT

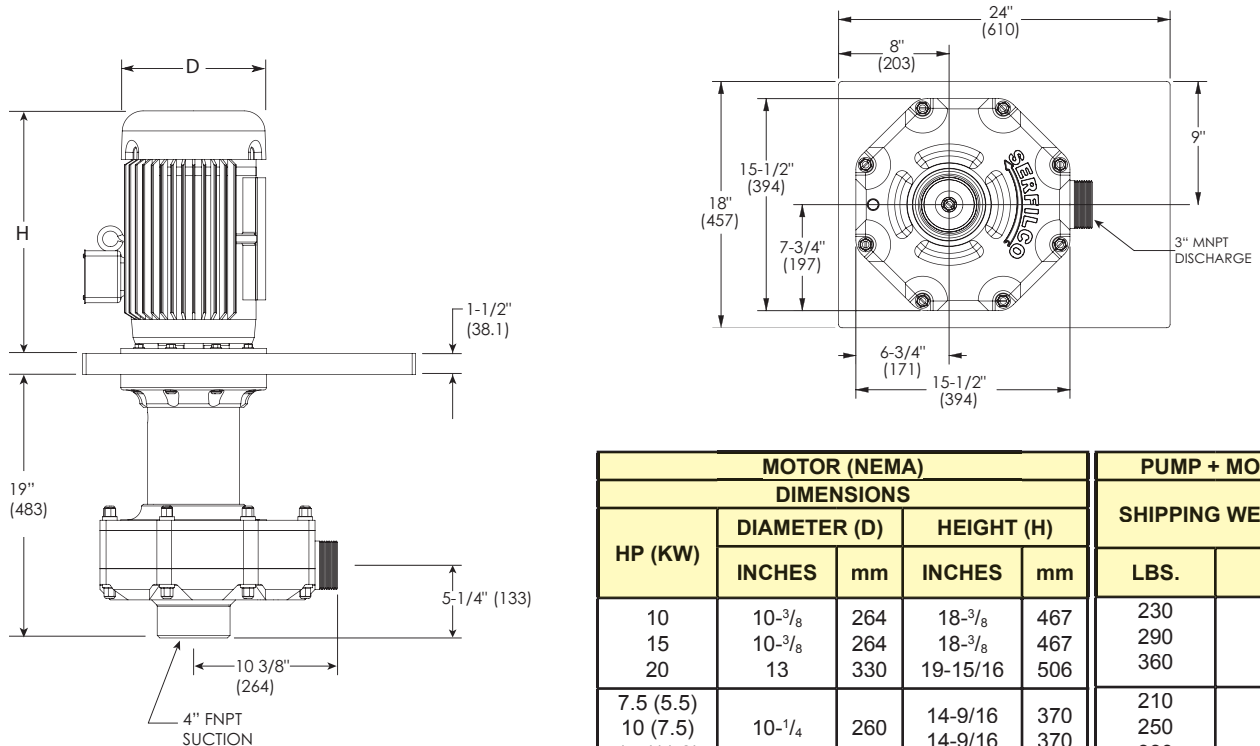
SERIES 'EHM' Specifications

Pump models are constructed of CPVC with CPVC sleeved stainless steel shaft. The mounting plate is PVC and includes a PTFE vapor seal. Standard "O"-rings are EPDM (ethylene propylene). The compound design impeller is fully enclosed for maximum efficiency.

Series 'EHM' pumps offer non-metallic solution contact. The chemical duty motors are 208-230/460V/3/60 @ 3450 or 1725 RPM and 190-208/380-415V/3/50 @ 2850 or 1450 RPM, TEFC, NEMA "C" face, painted with two-part epoxy enamel. These pumps can be used with up to a 9 ft. (2.7 m) suction extension under certain conditions.



DIMENSIONS Inches (mm)



MOTOR (NEMA)				PUMP + MOTOR		
DIMENSIONS				SHIPPING WEIGHTS		
HP (KW)	DIAMETER (D)		HEIGHT (H)		LBS.	kg.
	INCHES	mm	INCHES	mm		
10	10- ³ / ₈	264	18- ³ / ₈	467	230	105
15	10- ³ / ₈	264	18- ³ / ₈	467	290	132
20	13	330	19-15/16	506	360	163
7.5 (5.5)	10-1/4	260	14-9/16	370	210	95
10 (7.5)			14-9/16	370	250	113
15 (11.0)			14-9/16	370	330	150

SERIES 'EHM' Specifications and Ordering Information

TO ORDER, use Price Code Number

TABLE I

For standard CPVC pump-motor combination, select model from TABLE I.
For custom pump-motor combination, select from TABLE II

Select flow curve number providing the desired performance. Then match to Model Number listed below. Motor HP is non-overloading at full capacity.

TYPICAL 60 Hz MODELS		
FLOW CURVE NO.	MODEL	PRICE CODE NO.
8	EHM 3-8SC-H10.0	45-1886
9	EHM 3-9SC-H15.0	45-1897
10	EHM 3-10SC-H20.0	45-1808

TYPICAL 50 Hz MODELS		
FLOW CURVE NO.	MODEL	PRICE CODE NO.
9	EHM 3-9SC-H10.0 (7.5kW)	45-1895 A
10	EHM 3-10SC-H15.0 (11.0kW)	45-1809

TABLE II

To determine pump model for a specified GPM, TDH, and specific gravity, select performance point on curve. Determine required HP by moving vertically to corresponding number dotted line. Read required HP at right ordinate and multiply by S.G. Select pump, impeller and motor and construct Model and Price Code No.

EXAMPLE: PUMP + IMPELLER + MOTOR = PRICE CODE NO.
EHM 3 + -9SC + H15.0 = 45-1897

PUMP		
MODEL	MATERIAL	PRICE CODE NO.
EHM 3	CPVC-19"	45-18

IMPELLER		
FLOW CURVE NO.	ADD TO . . .	
	MODEL	PRICE CODE NO.
8	-8SC	8
9	-9SC	9
10	-10SC	0

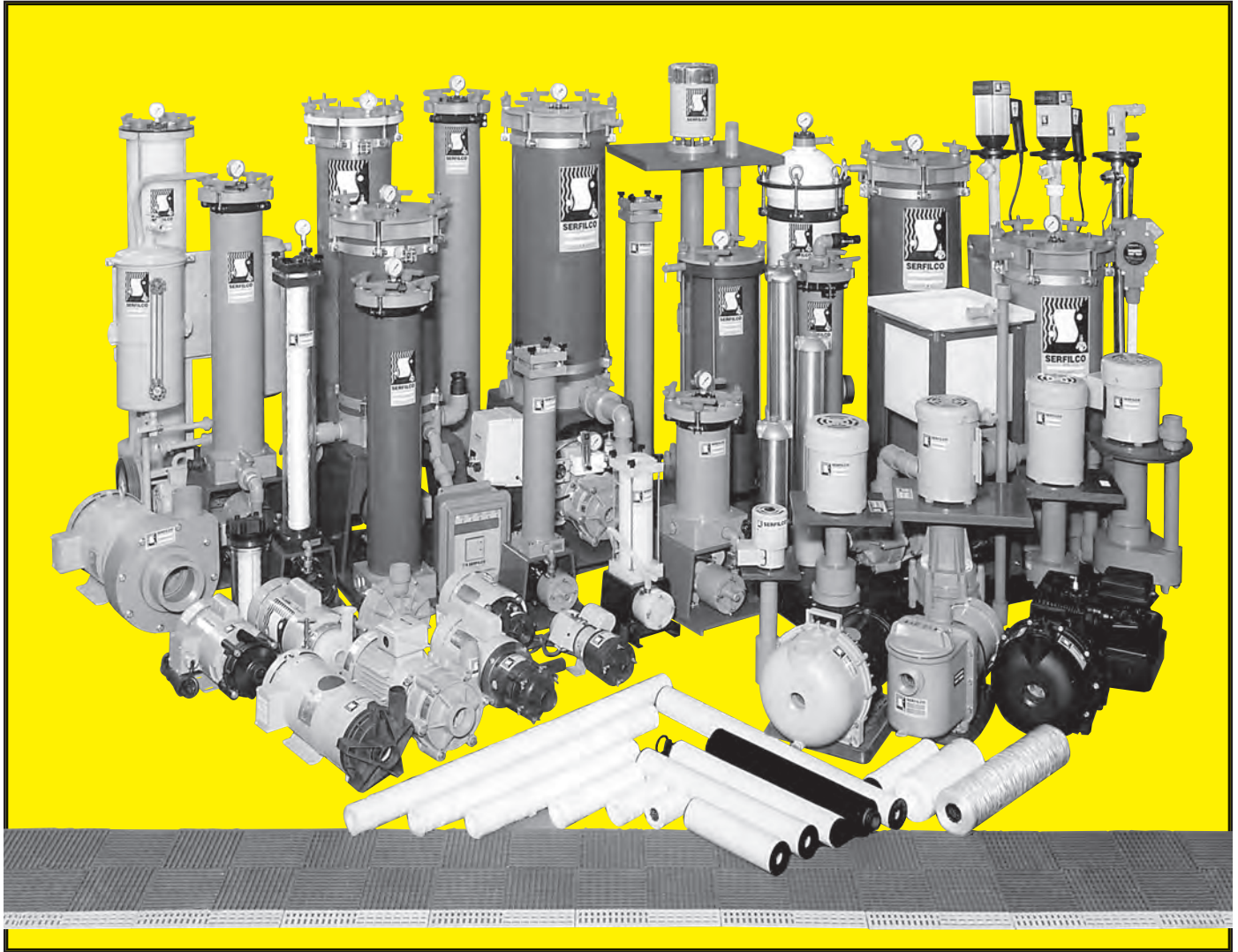
MOTOR ¹			
FREQ RPM	STD. HP (kW)	ADD TO . . .	
		MODEL NO.	PRICE CODE NO. ¹
60 Hz 1725	10	-H 10.0	6
	15	-H 15.0	7
	20	-H 20.0	8
50 Hz 1450	7.5	-H 7.5	4A
	10	-H 10.0	5A
	15	-H 15.0	9

¹ 60 Hz = 208-230/460/3/60
50 Hz = 190-208/380/415/3/50
To order pump without motor, use 0 for motor Price Code No.

OPTIONAL

DESCRIPTION	ADD SUFFIX TO MODEL	ADD TO OR SEPARATE PRICE CODE NO.
Viton "O"-rings (installed)	-V	V
Titanium shaft for extremely corrosive atmosphere. (installed)	-T	T
Discharge pipe assembly	-DPA	45-1241
Suction strainer	-ST	45-1242
Suction extension, CPVC		
12"	K12	46-0089
24"	K24	46-0090
36"	K36	46-0091

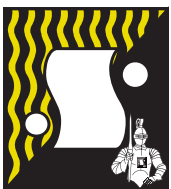
ALSO AVAILABLE FROM SERFILCO:



Your one-stop source for pumping, filtration and purification needs!

SERFILCO can help you realize the economic value of clarification and purification of your process solutions and waste streams. Our wide range of pumps, filters, packaged systems, accessories and related control instruments make it possible for you to take advantage of one-stop shopping for all of your liquid handling needs. With modern filtration technology at work in your facility, you can reduce waste, lower your manufacturing costs, and enhance product integrity.

We've been serving industry worldwide for over 40 years. We're ready to serve you, too!



SERFILCO[®]

2900 MacArthur Blvd. (800) 323-5431
Northbrook, IL. 60062-2005 U.S.A. (847) 509-2900
email: sales@serfilco.com Fax: (847) 559-1141
www.serfilco.com

DISTRIBUTED BY