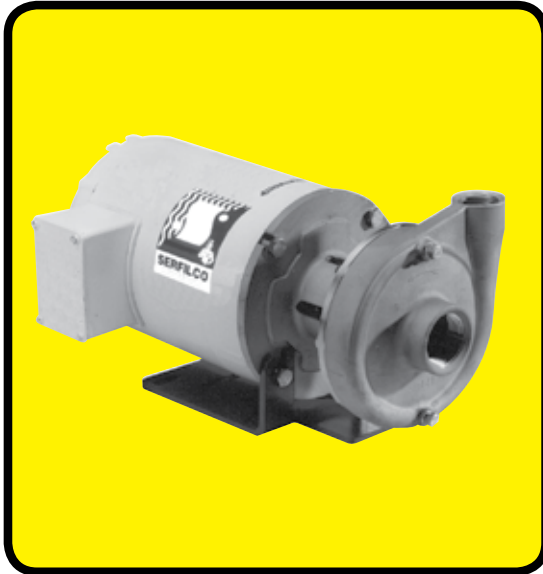




SERIES 'HCI' METAL HORIZONTAL PUMPS SERIES 'HSS' METAL HORIZONTAL PUMPS

2



HEAVY DUTY CAST IRON or 316SS CONSTRUCTION FOR:

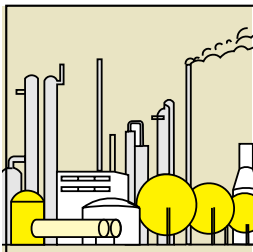
**ACIDS / ALKALIES / SOLVENTS
WET PROCESSING SOLUTIONS
D. I. WATER / FERTILIZERS**

- Flows to 160 U. S. GPM or 90 ft. TDH @ 60 Hz
(510 LPM or 19.5m @ 50 Hz)
- Available in cast iron or all 316 stainless steel solution contact
- Single or double mechanical seal
Carbon/ceramic
Viton® or EPDM elastomers
- 316 stainless steel shaft adapter
- Centrifugal, quiet, vibration-free
- Includes steel mounting base
- Motors are standard NEMA 'C' face
TEFC or explosion-proof

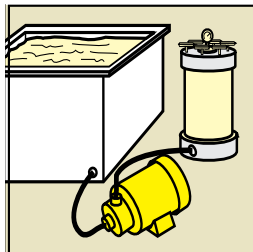
The Series 'HCI' and 'HSS' horizontal pumps feature compact close-coupled design. A high efficiency semi-open impeller allows for less clogging and quick cleaning.

Since the components are cast, there are no welds to break. Also, cast construction provides a superior corrosion resistance over similar welded styles.

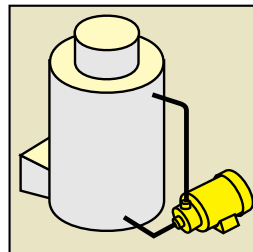
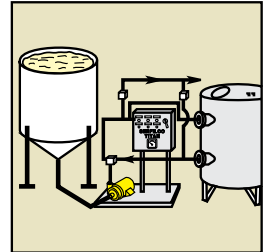
The Series 'HCI' and 'HSS' pumps feature the most widely accepted industrial mechanical seal designated as Type 21. This seal is mounted "in-board" and, thus tends to be self-cleaning. The seal is available as a single seal solution flush or as a double seal which uses external liquid as a flush. By adding the double seal, these pumps can better handle abrasives / salts and be protected from running dry.



PETROCHEMICAL



CLEANING & DESCALING

FUME SCRUBBING
& SPRAYING

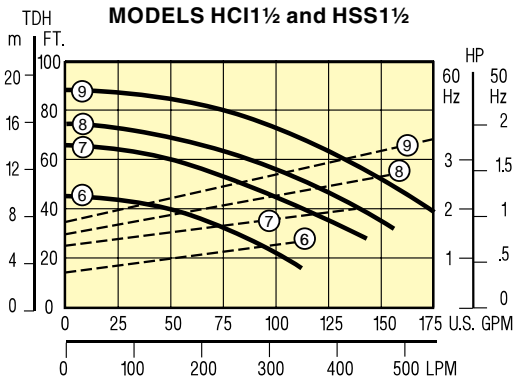
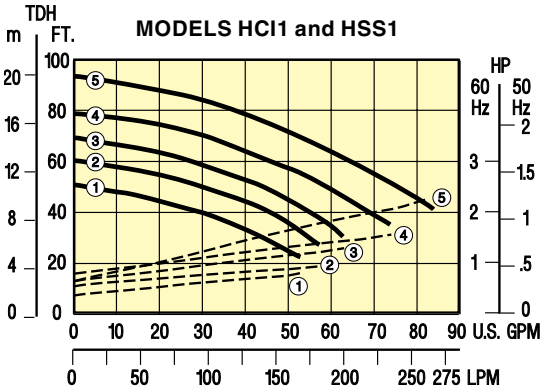
WASTEWATER TREATMENT



SERIES 'HCI' PUMPS Performance and Dimensions
SERIES 'HSS' PUMPS Performance and Dimensions

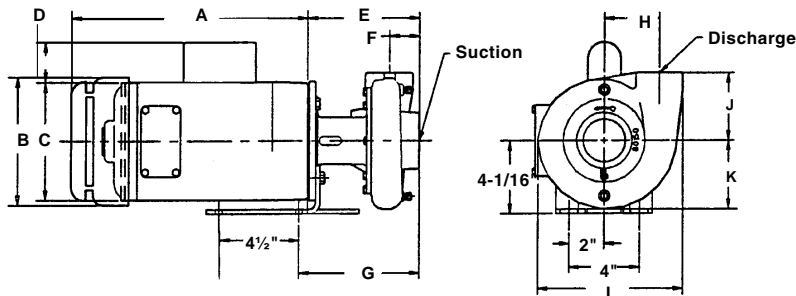
Pumps are constructed of cast iron or 316 stainless steel for maximum corrosion resistance. Gasket is a synthetic fiber with cast iron; Teflon® with 316SS. Both the single and double inboard seal assemblies are available in either EPDM or Viton®. Double seal is recommended for flushing the seal chamber with water

when abrasives are present or for certain other critical conditions. The stainless steel shaft adapter protects the motor shaft and allows the use of standard NEMA motor. Motors are 3450 RPM @ 60Hz or 2850 RPM @ 50 Hz, TEFC or EXP. Single phase TEFC motors include 8 ft. (2.4m) line cord.



DIMENSIONS

MODEL	HP	SUCT. DISCH.		DIMENSIONS (inches)											WEIGHT Lbs. (kg.)
		NPT (in)		A	B	C	D	E	F	G	H	J	K	L	
HCI1 & HSS1	3/4	1-1/4	1	9-1/4	6-1/8	5-3/8	2-1/16	5-3/4	1-3/8	6-1/4	2-3/4	3-1/2	3-1/8	7	39 (18)
	1			9-3/4	6-1/8	5-3/8	2-1/16								43 (20)
	1-1/2			10-1/2	7-3/16	6-7/8	2-1/16								49 (22)
HCI1½ & HSS1½	1	2	1-1/2	9-3/4	6-1/8	5-3/8	2-1/16	6-1/4	1-11/16	6-3/4	3-1/8	3-13/16	3-7/8	8-1/4	63 (29)
	1-1/2			10-1/2	7-3/16	6-7/8	2-1/16								57 (26)
	2			11-1/8	7-3/16	6-7/8	2-1/4								62 (28)
HSS1½	3			12-3/8	7-3/16	6-7/8	2-1/4								65 (29)





2

TO ORDER

TABLE I

Select pump-motor model from flow curve number providing the desired performance. Motor horsepower is non-overloading for 1.0 specific gravity and 60 Hz operation.

HSS1 PUMP - MOTOR single seal (230-460V/3/50-60) TEFC		
FLOW CURVE NO.	MODEL NUMBER	PRICE CODE NO.
1	HSS1-1V(M2)-D.75	61-0112G
2	HSS1-2V(M2)-D1.5	61-0122H
3	HSS1-3V(M2)-D1.5	61-0132H
4	HSS1-4V(M2)-D2.0	61-0142J
5	HSS1-5V(M2)-D3.0	61-0152J
HSS1½ PUMP - MOTOR single seal (230-460V/3/50-60) TEFC		
6	HSS1½-6V(M2)-D1.5	62-0162H
7	HSS1½-7V(M2)-D2.0	62-0172J
8	HSS1½-8V(M2)-D3.0	62-0182K
9	HSS1½-9V(M2)-D5.0	62-0192L

TABLE II

Determine pump-motor model for a specified GPM, TDH, mechanical seal and specific gravity. Select performance point on curve and size horsepower from corresponding numbered dotted line vertically above or below performance point. Read required horsepower at right ordinate and multiply by specific gravity. Select pump model components and Price Code Numbers from Table II.

PUMP		IMPELLER		
MODEL	PRICE CODE NO.	FLOW CURVE NO.	ADD TO . . . MODEL	PRICE CODE NO.
HCI1	61-03	1	1	1
HCI1½	62-03	2	2	2
HSS1	61-01	3	3	3
HSS1½	62-01	4	4	4
		5	5	5
		6	6	6
		7	7	7
		8	8	8
		9	9	9

MECHANICAL SEAL

MATERIAL (SOLUTION CONTACT)	ADD TO . . .	
	MODEL NUMBER	PRICE CODE NO.
SINGLE MECHANICAL SEAL		
EPDM, carbon, ceramic	L(M1)	1
Viton, carbon, ceramic	V(M2)	2
DOUBLE MECHANICAL SEAL		
EPDM, carbon, ceramic	L(M1xM1)	3
Viton, carbon, ceramic	V(M2xM1)	4

TEFC MOTOR ¹ (3450 RPM / 2850 RPM)

HP	SINGLE PHASE ²		THREE PHASE ²	
	ADD TO . . .		ADD TO . . .	
	MODEL	PRICE CODE NO.	MODEL	PRICE CODE NO.
.75	-C.75	B	-D.75	F
1	-C1.0	C	-D1.0	G
1.5	-C1.5	D	-D1.5	H
2.0	—	—	-D2.0	J
3.0	—	—	-D3.0	K
5.0	—	—	-D5.0	L

¹ For explosion-proof motors (UL and CSA approved for Class I, Group D or Class II, Group F & G), add X to Model No. and Price Code No. EXP motors are 60 Hz only.

² Single phase - 115-208-230V/1/60 or 220-440V/1/50
 Three phase - 208-230-460V/3/60 or 380-415V/3/50.
 All motors are 3450 or 2850 RPM.