



SERIES 'HF' HORIZONTAL PUMP

2



Available with optional flange connections and long-coupled.

HIGH FLOW, HIGH TDH ANSI DIMENSIONAL HIGH EFFICIENCY /LOW ENERGY USAGE

- **Flows to 400 U.S. GPM or 170 ft. TDH @ 60 Hz** (1250 L/min or 42 m @ 50 Hz)
- **Non-metallic solution contact**
High-temperature polypropylene or CPVC
(Refer to a chemical resistance chart)
- **Centrifugal – quiet, vibration free**
- **Choice of single or double mechanical seal**
with EPDM or Viton® elastomers
- **Choice of long or close-coupled**
- **Chemical Duty motor – standard**
Sealed oversized bearings, cast iron end bells, corrosion resistant two-part epoxy coating, stainless steel nameplate
- **ANSI dimensional — with optional flanged connections**

The Series 'HF' Horizontal Pump represents the next generation of molded pumps from SERFILCO. The 'HF' retains a robust design and non-metallic solution contact to meet the most demanding applications while providing the choice of materials of construction and economy found in all of our molded pumps.

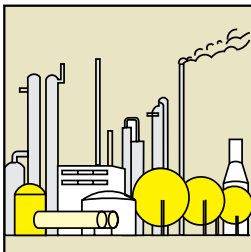
The 'HF' is offered in a choice of SERFILCO exclusive high-temperature polypropylene or CPVC construction and is ANSI dimensional with the optional flanged connections.

The totally enclosed impeller is molded to close tolerances

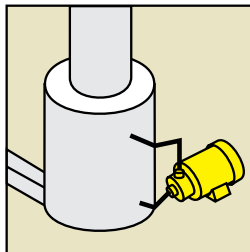
which allows peak horsepower efficiency across a broad range of operational flow and head requirements.

The external mechanical seal and impeller sleeve design isolates metal components to provide non-metallic solution contact with the pumped liquid. The standard (M8) seal assembly has silicon carbide seal faces and is the most durable and longest lasting mechanical seal available. Double mechanical seal models require water lubrication of the seal faces and allow the pump to be used for solutions containing abrasives, high salt concentrations and for electroless plating solutions.

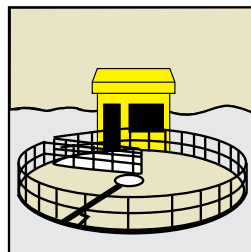
TYPICAL APPLICATIONS



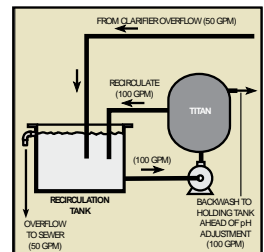
PETROCHEMICAL



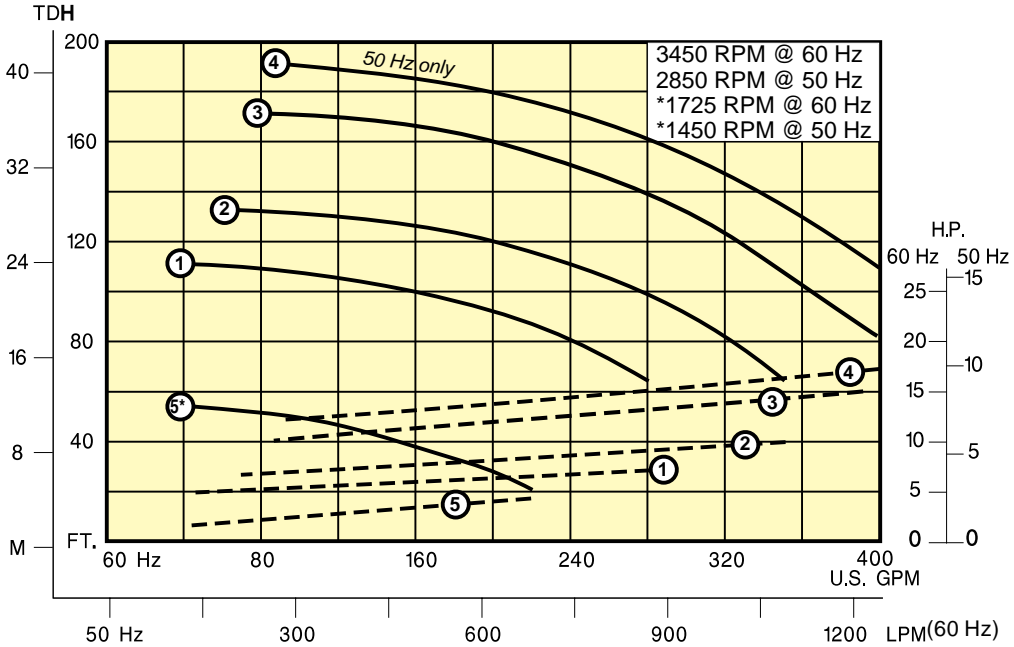
– FUME SCRUBBING
– COOLING TOWER



– WASTE TREATMENT
– PROCESS WATER

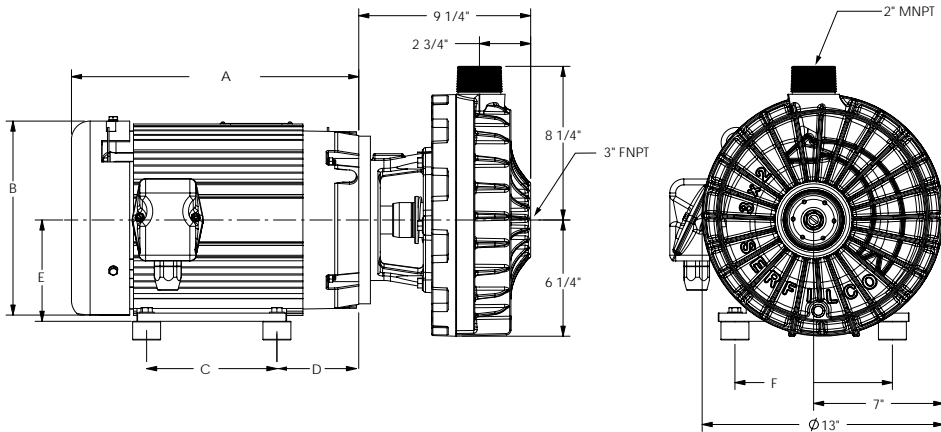


FILTER SYSTEM



DIMENSIONS

(50 Hz)



MOTOR FRAME	HP	DIMENSIONS in. (mm)					
		A*	B*	C	D	E*	F
184TC	5.0	14.0(356)	8.7(221)	5.5(140)	2.8(71)	4.5(114)	7.5(191)
213TC	7.5	15.5 (394)	10.4(263)	5.5(140)	3.5(89)	5.3(135)	8.5(216)
215TC	10.0	15.4(390)	10.4(263)	7.0(178)	4.4(111)	5.5(140)	8.5(216)
215TC	15.0	15.4(390)	10.4(263)	7.0(178)	4.4(111)	5.5(140)	8.5(216)

* Motor dimensions will vary with motor manufacturer



2

Pumps are molded of SERFILCO exclusive high-temperature polypropylene or CPVC and have sleeved stainless steel shafts for non-metallic solution contact. All models have an enclosed impeller and externally mounted Type 21 mechanical seal with silicon carbide seal faces. ANSI 150 lb. flange connections are optional. Standard O-rings are EPDM (ethylene propylene).

External hardware not in liquid contact is stainless steel. Motor is coated with two-part epoxy.

A double mechanical seal is recommended for solutions containing abrasives, high temperature and other critical service.

TO ORDER use Price Code Number

*FOR STANDARD PUMP-MOTOR COMBINATION, SELECT MODEL FROM TABLE I.
FOR CUSTOM PUMP-MOTOR COMBINATION, SELECT FROM TABLE II ON PAGE 4*

TABLE I STANDARD MODELS

60 Hz MODELS				
FLOW CURVE	MODEL NUMBER	PRICE CODE NO.	MODEL NUMBER	PRICE CODE NO.
	CPVC		PPP- POLYPROPYLENE	
1	HF3x2CM1L(M8)-D7.5	47-5011A	HF3x2PM1L(M8)-D7.5	47-5111A
2	HF3x2CM2L(M8)-D10.0	47-5021B	HF3x2PM2L(M8)-D10.00	47-5121B
3	HF3x2CM3L(M8)-D15.0	47-5031C	HF3x2PM3L(M8)-D15.0	47-5131C
5	HF3x2CM5L(M8)-H5.0	47-5051D	HF3x2PM5L(M8)-H5.0	47-5151D

50 Hz MODELS				
FLOW CURVE	MODEL NUMBER	PRICE CODE NO.	MODEL NUMBER	PRICE CODE NO.
	CPVC		PPP- POLYPROPYLENE	
1	HF3X2CM1L(M8)-D7.5-50	47-5011E	HF3X2PM1L(M8)-D7.5-50	47-5111E
2	HF3X2CM2L(M8)-D7.5-50	47-5021E	HF3X2PM2L(M8)-D7.5-50	47-5121E
3	HF3X2CM3L(M8)-D10.0-50	47-5031F	HF3X2PM3L(M8)-D10.0-50	47-5131F
4	HF3X2CM4L(M8)-D10.0-50	47-5041F	HF3X2PM4L(M8)-D10.0-50	47-5141F
5	HF3X2CM4L(M8)-H5.0-50	47-5051G	HF3X2PM5L(M8)-H5.0-50	47-5151G

