

TYPICAL APPLICATIONS

Single fixture 12 VDC potable water installations. Other uses include combinations with electric faucet systems. This pump may be used for general water transfer. For other applications, contact SHURflo.

PUMP

Type	Wobbler Pump
Ports	3/8" Barb
Liquid	130 °F [54 °C] Max
Prime	Flooded Inlet
Inlet PSI	30 PSI [2.1 Bar] Max
Run Dry	No

ELECTRICAL

Motor	12VDC Permanent Magnet, Intermittent Duty
	Splash-proof Housing
Protection	Thermal Overload, Automatic Restart
Leads	16 AWG, 17" [43 cm] Red +, 17" [43 cm] Black -
Fuse	5 Amp Time Delay Recommended
Control	No Control

MATERIALS

Housing	Ryton
Wobbler	Ryton
Hardware	Stainless Steel

APPROVALS

c-UL

WARRANTY

1 Year Limited Warranty
See SB-1041 & SB-1050 For Full Warranty Details

SHIPPING

Net Weight (Boxed)	5 Lb [2.3Kg] each
Carton Weight	12 each, 52 Lb [24 Kg]
Carton Size	24"L x 18"W x 11"H [61cm x 46cm x 28cm]

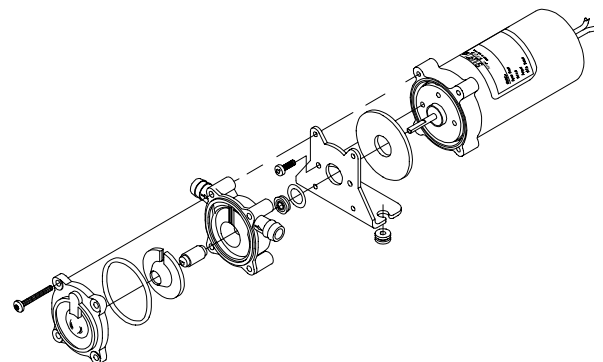
RELATED DOCUMENTS

Catalog	MS-030-083
	MS-030-084
Installation Manual	911-420
Maintenance	911-420
Applications Spec Guide	MS-020-005
Warranty	SB-1041/SB-1050

Nautilus

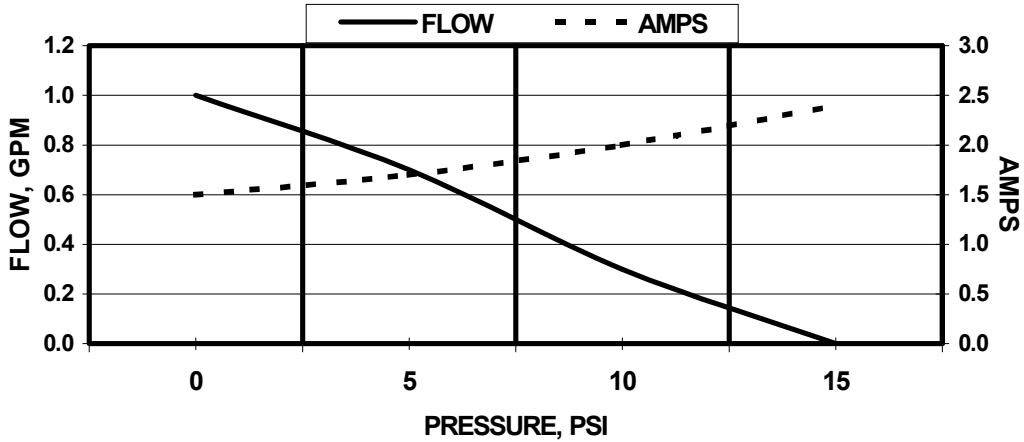


Exploded View---No Parts Kits Available

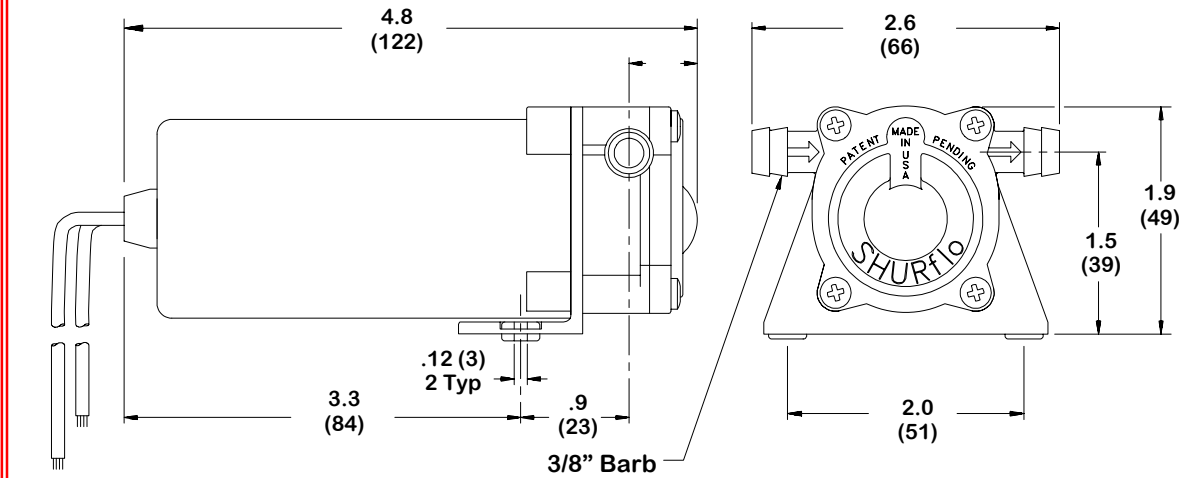


Typical Performance @ 12 VDC

PRESSURE		FLOW		CURRENT
BAR	PSI	GPM	LPM	AMPS
0.0	0	1.0	3.7	1.5
0.3	5	0.7	2.6	1.7
0.7	10	0.3	1.1	2.0
1.0	15	0	4.9	2.4



Typical Dimensions



* ISO Registered Facility

SHURflo
First in Fluid Innovation

SHURflo reserves the right to update specifications, prices, or make substitutions.

SHURflo ★
12650 Westminster Ave.
Santa Ana, CA 92706-2100
(800) 854-3218 (714) 554-7709
FAX (714) 554-4721
Shipping/UPS: 12650 Westminster Ave.
Garden Grove, CA 92843

SHURflo East
52748 Park Six Court
Elkhart, IN 46514-5427
(800) 762-8094
(219) 262-0478
FAX (219) 264-2169
© 2001

SHURflo Ltd.
Unit 5 Sterling Park
Gatwick Road, Crawley
West Sussex, RH10 2QT
United Kingdom
+44 1293 424000
FAX +44 1293 421880