

TYPICAL APPLICATIONS

RV maceration. This pump is for intermittent duty only. This pump is not listed for potable water use. This pump may be used for general water transfer. For other applications, contact SHURflo.

PUMP

Type Flexible impeller
 Ports Inlet: 1-1/2" Barb and NPT-M
 Outlet: 1" Barb
 Liquid 130 °F [54 °C] Max
 Prime 4 feet [2.7 M]
 Run Dry 2 minutes. Not Recommended.

ELECTRICAL

Motor 12VDC Permanent Magnet, Intermittent Duty
 Protection Thermal Overload, Automatic Restart
 Leads 14 AWG, 12" [31 cm]
 Fuse 20 Amp Recommended
 Control None.

MATERIALS

Housings Phenolic
 Impeller Nitrile
 Hardware Stainless Steel

APPROVALS

CSA, ISO 8846, meets 33CFR 183.410 ignition protection

WARRANTY

1 Year Limited Warranty
 See SB-1041 For Full Warranty Details

SHIPPING

Net Weight (Boxed) 6 Lb [2.7Kg] each
 Carton Weight 6 each, 36 Lb [17 Kg]
 Carton Size 24"L x 18"W x 6"H
 [61cm x 46cm x 15cm]

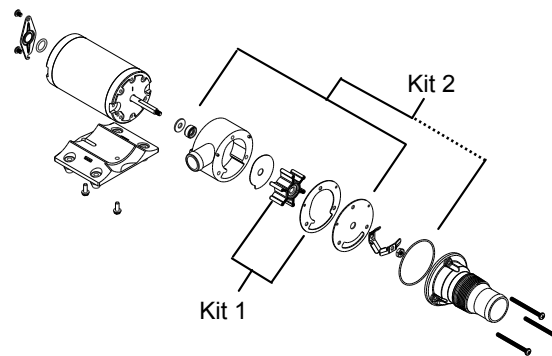
RELATED DOCUMENTS

Catalog MS-030-083
 Installation Manual 911-566
 Maintenance 911-566
 Applications Spec Guide MS-020-005
 Warranty SB-1041

Macerator



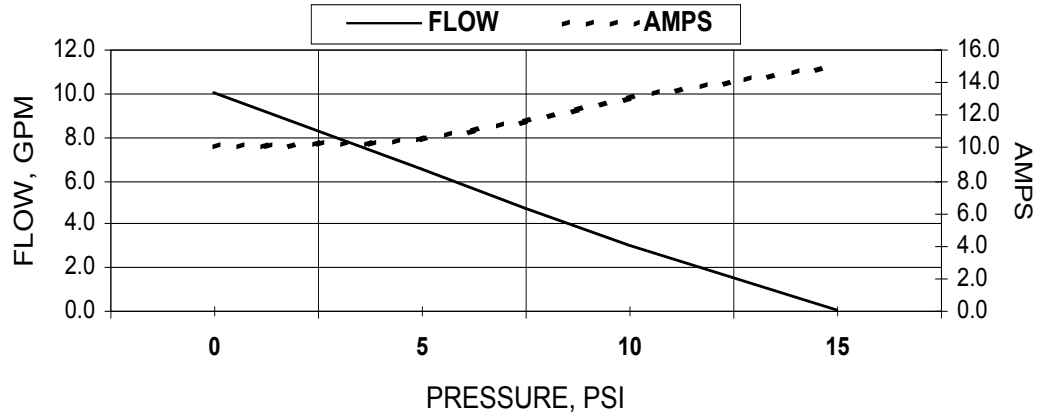
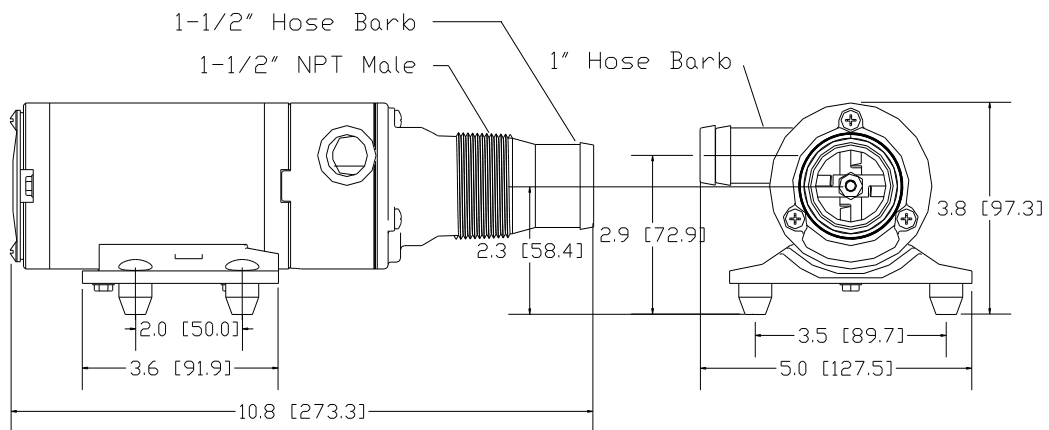
Parts Kits



Number	Component	Parts Kit
Kit 1	Impeller Kit	94-571-00
Kit 2	Pump Head Kit	94-570-00

Typical Performance

PRESSURE		FLOW		CURRENT
BAR	PSI/Ft. Head	GPM	LPM	AMPS
0.0	0/0	10	37	10
0.34	5/11.5	6.5	24.6	10.5
0.68	10/23	3	11.3	13
0.71	10.5/24	2	7.5	13.7
Blocked	Blocked	0	0	15


Typical Dimensions


* ISO Registered Facility



SHURflo reserves the right to update specifications, prices, or make substitutions.

SHURflo, LLC ★
 5900 Katella Ave.
 Cypress, CA 90630
 (800) 854-3218 (562) 795-5200
 FAX (562) 795-7564
 Shipping/UPS: 5900 Katella Ave. Bldg. C
 Cypress, CA 90630

SHURflo, LLC East
 52748 Park Six Court
 Elkhart, IN 46514-5427
 (800) 762-8094
 (574) 262-0478
 FAX (574) 264-2169
 © 2001-2005

SHURflo Ltd. Europe, Middle East
 Unit 5 Sterling Park
 Gatwick Road, Crawley
 West Sussex, RH10 2QT
 United Kingdom
 +44 1293 424000
 (800) 854-3218
 FAX +44 1293 421880