

Generalities

The vertical pumps VCI-M, VLI-M and VLI-A are intended for pumping of fluids requiring stainless steel construction in the most various fields of industrial activities.

SOMEFLU vertical pumps fit your needs accordingly to the installation requirements:

VCI-M length under base plate 200 to 440 mm depending of model.

VLI-M length under base plate 700 to 800 mm depending of model.

VLI-A length under base plate 600-800-1000-1100-1350-1750 mm.

VCI-M, VLI-M, VLI-A pumps offer flow rates up to 60 m³/h (264 US gpm) and a discharge head up to 30 mcl (98 ft).

For higher characteristic up to 300 m³/h (1320 US gpm) use our VI range.



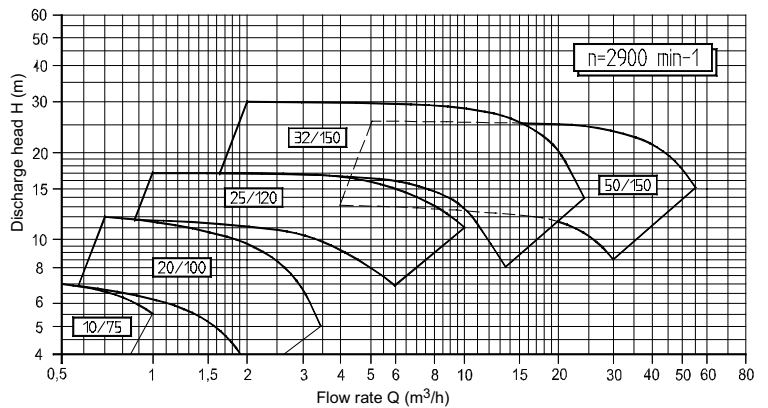
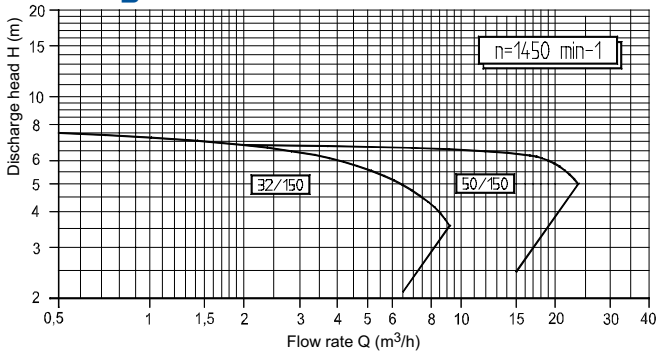
ATEX conformity 

For the EC zone, all vertical pumps are available certified as per ATEX 94/6/CE.

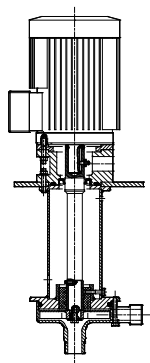
II 2/3 GcT4 (others on demand).

Voluntary certification INERIS 06 ATEX 3005X.

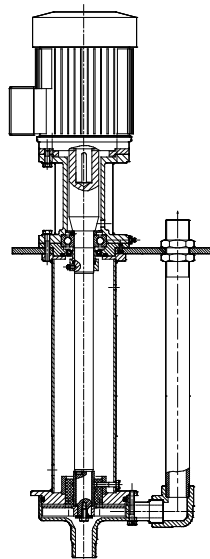
Diagrams



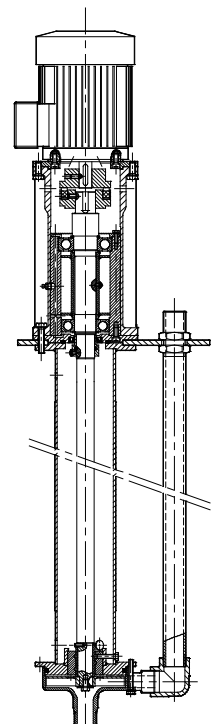
VCI-M



VLI-M



VLI-A

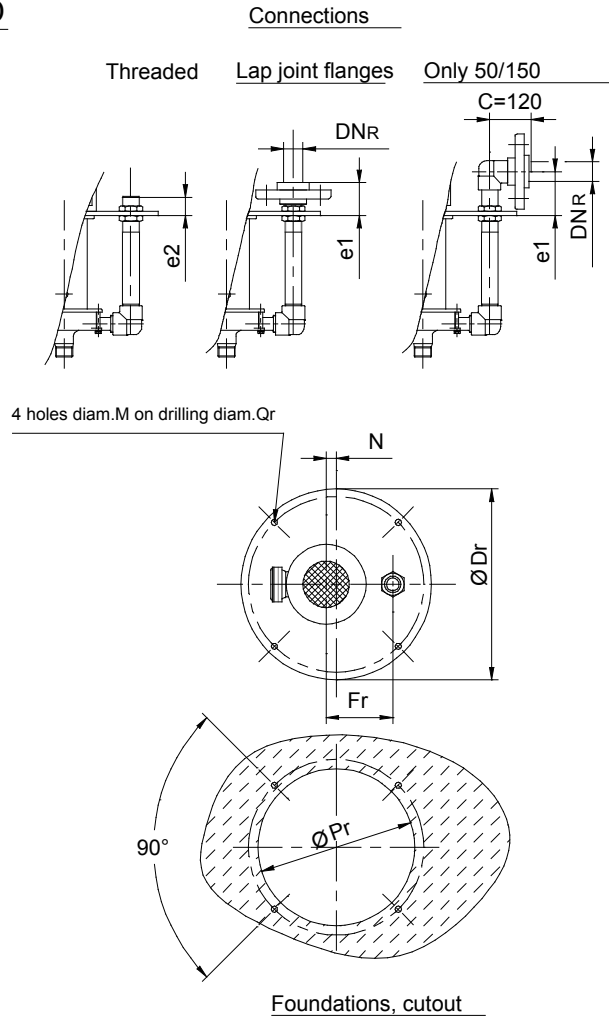
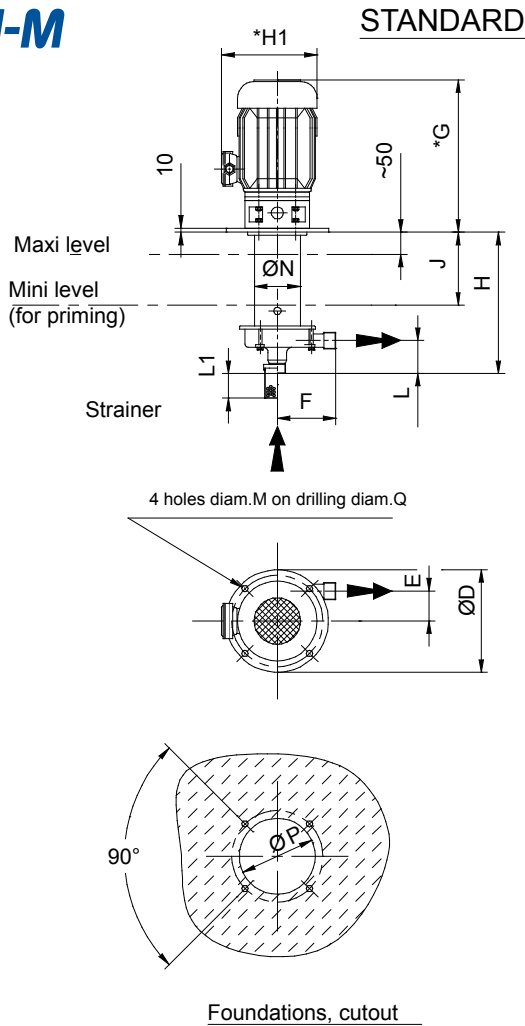


Construction

All components in contact with pumped liquid are made of Stainless Steel.

- X2 Cr Ni Mo 17-12-2 (AISI 316L).
- X1 Ni Cr Mo Cu 25-20-5 (AISI 904L) on demand.

VCI-M



n = 2900 min⁻¹

Types	P in Kw	Threaded connections		Motors 3 phases - IP55		Weight in kg	Motors 3 phases - ATEX		Weight in kg	Pumps dimensions										Weight in kg	Cutout				Options		
		T	e2	*G	*H1		Motor	*G		*H1	Motor	D	Dr	E	F	Fr	N	H	J		M	L	Pump	P	Pr	Q	Qr
10/75	0,45	1/4"	47	280	151	6				180	200	33	66	85	22	200	110	12	52		135	160	155	180	10	55	45
20/100	0,45	3/4"	45	280	151	6				180	250	43	90	115	37	220	105	12	59		135	205	155	225	20	55	35
	1,1		"	"	208		9,7	360	252	20,5	"	"	"	"	"	"	"	"	"	"	"	"	"	"	"	"	"
25/120	1,1	1"	65	298	208	9,7	356	252	20,5	220	290	50	110	140	43	300	170	12	70,5		170	250	200	265	25	75	72
	2,2		"	328	228	16	381	319	40	"	"	"	"	"	"	"	"	"	"	"	"	"	"	"	"	"	"
32/150	2,2	1 1/4"	50	333	228	16	386	"	40	250	360	63	130	166	53	350	205	14	81,5		195	300	225	330	32	59	72
	3		"	378	238	20	428	324,5	45	"	"	"	"	"	"	"	"	"	"	"	"	"	"	"	"	"	"
	4		"	"	"	24,4	436	349	56	"	"	"	"	"	"	"	"	"	"	"	"	"	"	"	"	"	"
50/150	5,5	2"	88	456	265,5	34,4	546	386	82	360	435	55	130	205	60	373	205	14	91		300	385	330	405	50	128	72
	7,5		"	"	"	"	39	"	"	82	"	"	"	"	"	"	"	"	"	"	"	"	"	"	"	"	

Dimensions in mm (subject to change)

* Subject to change depending on manufacturers

Application fields

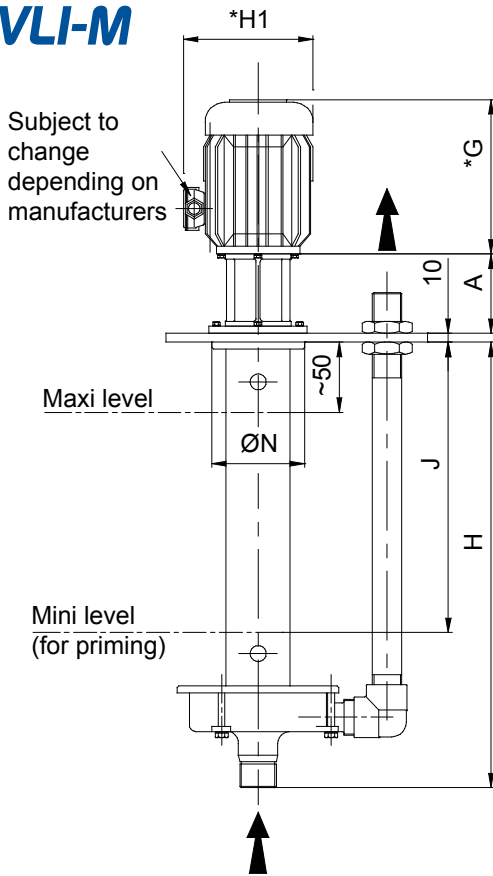
- Surface treatment bath – Chemical nickel.
- Pickling units.
- Cleaning machine (caustic soda, solvents etc.)
- Alkaline effluents transfer.

Main advantages

- Compact model.
- Reliability and robustness due to massive design and lost wax casting.
- Open or closed impeller.
- Motors normalized as per IEC standards.
- Simplified maintenance.
- Optional mounting outside the tank.

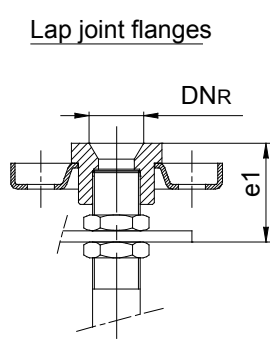
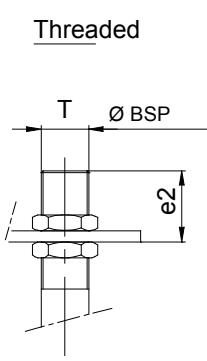
FP 07.02 EN

VLI-M

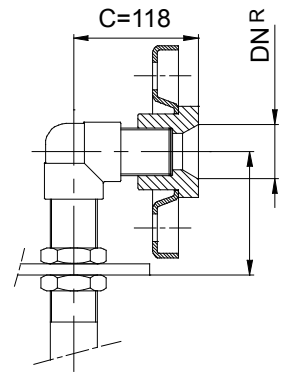


Subject to change depending on manufacturers

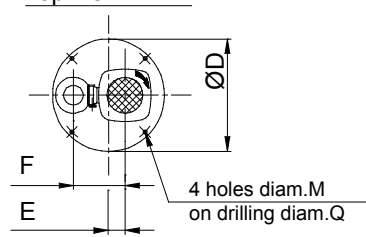
Connections



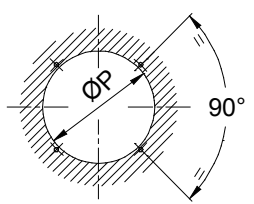
Only 50/150



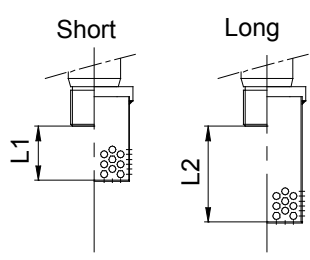
Top view



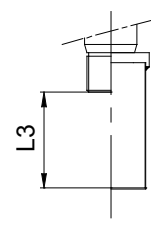
Foundations, cutout



Strainers



Extension pipe



Types	P in Kw	Threaded connections		Motors 3 phases - IP55			Motors 3 phases - ATEX			Pumps dimensions								Weight in kg Pump	Cutout		Options									
		T	e2	*G	*H1	Motor	*G	*H1	Motor	A	D	E	F	H	J	M	N		P	Q	Flanges			Strainer						
																					DNR	e1	Short	Long	Pipe					
10/75	0,45	1/4"	50	172	156	6				116	200	22	85	700	558	12	100		160	180	10	56	45	**	**					
20/100	0,45	3/4"	55	172	156	10	273	256	21	126	250	37	115	700	441	12	100		205	225	20	63	35	**	**					
	1,1		216	202	126					"	"	"	"	"	"	"	"		"	"	"	"	"	"	"	"	"	"	"	"
25/120	1,1	1"	60	215	208	16	314	269	40	163	290	43	140	700	531	12	100		245	265	25	78	72	**	**					
	2,2		245	228	"					"	"	"	"	"	"	"	"		"	"	"	"	"	"	"	"	"	"	"	"
	3		"	"	"					"	"	"	"	"	"	"	"		"	"	"	"	"	"	"	"	"	"	"	"
32/150	2,2	1 1/4"	63	245	228	16	319	298	40	176	360	53	166	800	620	14	148		300	330	32	70	72	**	**					
	3		"	290	238					20	340	325	45	"	"	"	"		"	"	"	"	"	"	"	"	"	"	"	
	4		"	"	"					22	348	349	56	"	"	"	"		"	"	"	"	"	"	"	"	"	"	"	"
	5,5		"	350	265					33	440	386	82	194	"	"	"		"	"	"	"	"	"	"	"	"	"	"	"
50/150	5,5	2"	74	350	265	33	440	386	82	194	375	60	176	822	593	14	148		320	345	50	111	72	**	**					
	7,5		"	"	"					39	"	"	"	"	"	"	"		"	"	"	"	"	"	"	"	"	"	"	
	11		"	387	315					54	549	485	150	"	"	"	"		"	"	"	"	"	"	"	"	"	"	"	"

Dimensions in mm (subject to change)

* Subject to change depending on manufacturers

**Lenght on demand

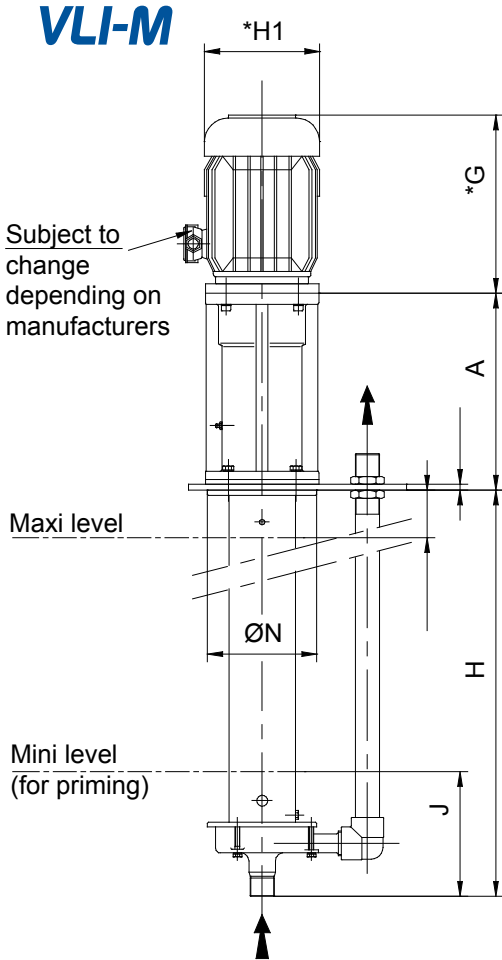
Application fields

- Surface treatment bath – Chemical nickel.
- Pickling units.
- Cleaning machine (caustic soda, solvents).
- Alkaline effluents transfer.

Main advantages

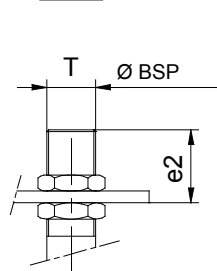
- Reliability and robustness due to massive design and lost wax casting.
- Opened or closed impeller.
- Motors normalized as per IEC standards.
- Simplified maintenance.
- Optional mounting outside the tank.

VLI-M

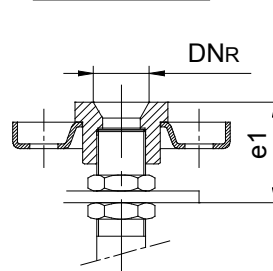


Connections

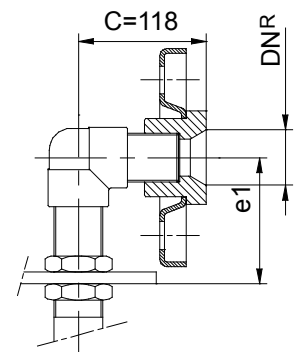
Threaded



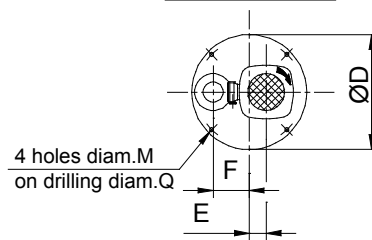
Lap joint flanges



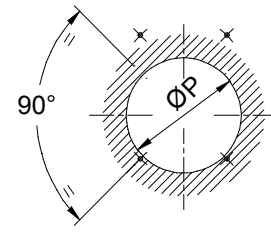
Only 50/150



Top view

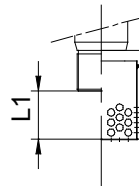


Foundations, cutout

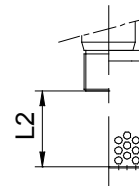


Strainers

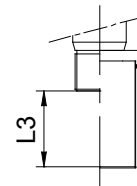
Short



Long



Extension pipe



n = 2900 min⁻¹

Types	P in Kw	Threaded connections		Motors 3 phases - IP55		Weight in kg	Motors 3 phases - ATEX		Weight in kg	Pumps dimensions								Weight in kg	Cutout			Options							
		T	e2	*G	*H1		Motor	*G		*H1	Motor	A	D	E	F	J	M		N	Pump	P	Q	Flanges				Strainer		
																							DNR	e1	Short	Long	Pipe		
25/120	1,1	1"	60	215	208	9,7	273	256	24	335	360	53	113	165	14	188		300	330	25	70	72	**	**					
	2,2		245	228	16	314	269	35	355	"	"	"	"	"	"	"		"	"	"	"	"	"	"	"				
	3		290	238	20	355	298	45	"	"	"	"	"	"	"	"		"	"	"	"	"	"	"	"				
32/150	2,2	1 1/4"	64	245	228	16	314	269	35	345	360	53	113	165	14	188		300	330	32	74	72	**	**					
	3		290	238	20	355	298	45	355	"	"	"	"	"	"	"		"	"	"	"	"	"	"					
	4		"	"	"	22	363	308	53	"	"	"	"	"	"	"		"	"	"	"	"	"	"	"				
50/150	5,5	2"	74	290	238	20	355	298	45	355	375	60	116	200	14	188		320	345	50	93	111	**	**					
	4		"	"	"	22	363	308	53	"	"	"	"	"	"	"		"	"	"	"	"	"	"					
	5,5		350	265	32,5	549	411	95	375	"	"	"	"	"	"	"		"	"	"	"	"	"	"	"				
	7,5		"	"	"	39	"	"	100	"	"	"	"	"	"	"		"	"	"	"	"	"	"	"				
11	"	425	330	62	599	476	163	401	"	"	"	"	"	"	"	"	"	"	"	"	"	"	"						

n = 1450 min⁻¹

Types	P in Kw	Threaded connections		Motors 3 phases - IP55		Weight in kg	Motors 3 phases - ATEX		Weight in kg	Pumps dimensions								Weight in kg	Cutout			Options							
		T	e2	*G	*H1		Motor	*G		*H1	Motor	A	D	E	F	J	M		N	Pump	P	Q	Flanges				Strainer		
																							DNR	e1	Short	Long	Pipe		
25/120	1,1	1"	60	218	190	11,5	314	269	35	355	360	53	113	165	14	188		300	330	25	70	72	**	**					
32/150	2,2	1 1/4"	64	290	200	20	314	269	35	355	360	53	113	165	14	188		"	"	"	"	"	"	"	"				
50/150	3	2"	74	290	200	22,5	355	298	45	355	375	60	116	200	14	188		"	"	"	"	"	"	"	"				

Dimensions in mm (subject to change)

* Subject to change depending on manufacturers

**Lenght on demand

Application fields

- Surfaces treatment bath.
- Pickling units.
- Coating units.
- Alkaline effluents tranfer.

Main advantages

- Similar to VLI-M type but with bearing.
- Lenght from 600 to 1750 mm.
- Motor dismantling without pump dismantling.
- Reliability and robustness Alkaline to massive design and lost wax casting.
- Open or closed impeller.
- Motors normalized as per IEC standards.

FP 07.02 EN