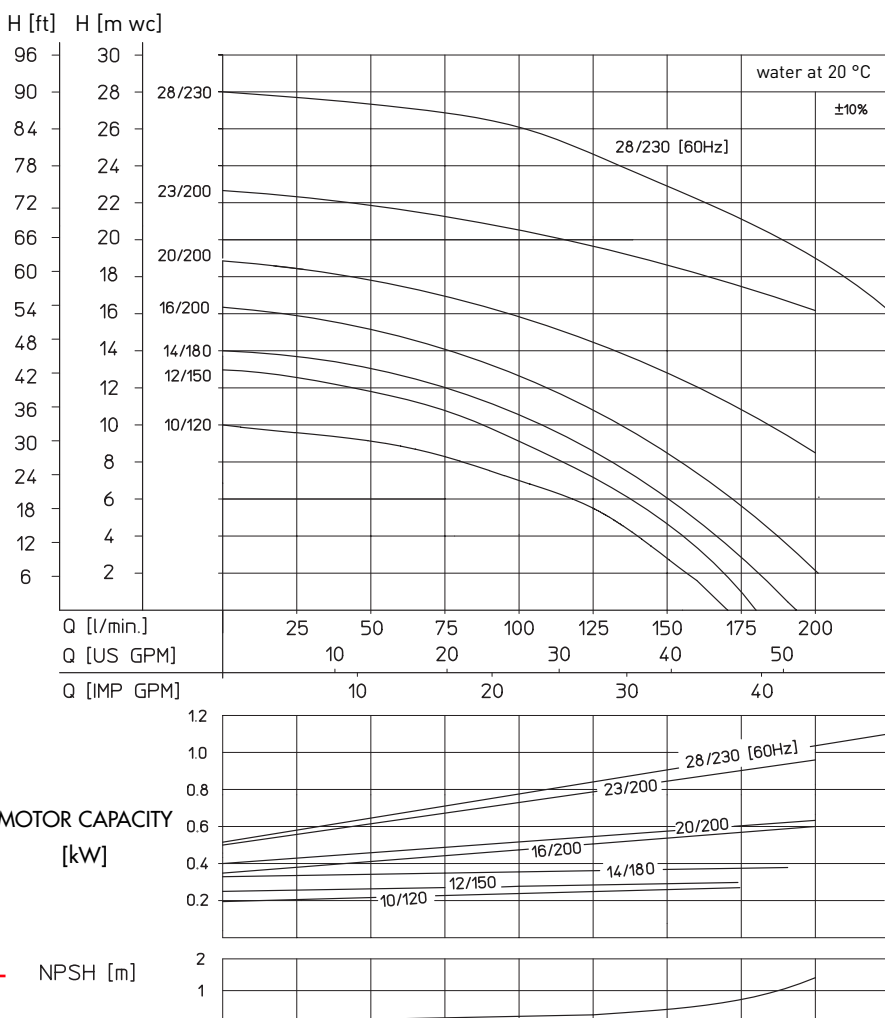




- Delivery rate up to 230 l/min
- Delivery head up to 28 m wc
- No shaft seal required
- For aggressive and neutral liquids
- Made of PP, PVDF and stainless steel
- Protection class IP 55
- ATEX design available

Magnetically coupled centrifugal pumps of type 3 are non-self-priming pumps that operate in horizontal position and are made in monobloc design. A magnetic coupling connects the pump to the motor and transmits the power of the motor to the impeller.

PERFORMANCE CHARTS:



STANDARD DESIGN:

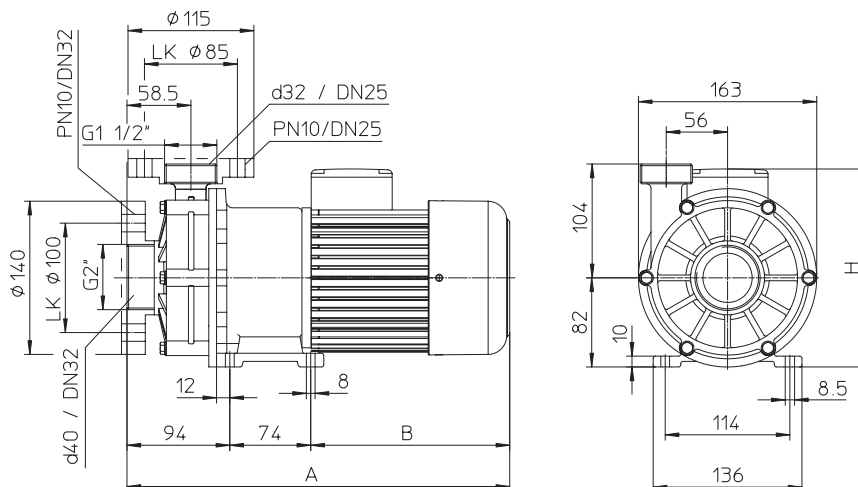
Housing, impeller and impeller magnet coating are made of glass-fibre reinforced PP plastic or PVDF or stainless steel. Sleeve bearings, starting rings and centering shaft are made of 99.7% pure oxide ceramic, and the O-ring sealing of the housing is made of either FKM or EPDM. (See table on page 7 for other materials.)



TECHNICAL DATA												
Size	10/120	12/150		14/180		16/200		20/200		23/200	28/230	
Maximum delivery rate [l/min]	160	175		190		200		200		200	230	
Maximum delivery head [m wc]	10	13.0		14.0		16.5		19.5		23.0	28	
Maximum density [g/cm ³]*	1.6	1.15	1.8	1.1	1.65	1.22	1.4	1.2	1.3	1.6	1.5	
Motor capacity P2 at 50 Hz [kW]	0.37	0.37	0.55	0.37	0.55	0.55	0.75	0.75	1.1	1.5	–	
Motor capacity P2 at 60 Hz [kW]	0.44	0.44	0.66	0.44	0.66	0.66	0.9	0.9	1.32	1.8	1.8	
Current rating (400 V) [A]	1.02	1.02	1.6	1.02	1.6	1.6	2.2	2.2	2.8	3.25	3.25	
Rated speed at 50 Hz [min ⁻¹]	2900	2900		2900		2900		2900		2900	–	
Rated speed at 60 Hz [min ⁻¹]	3440	3440		3440		3440		3440		3440	3440	
Dimension A [mm]	350	350	366	350	366	366	366	366	385	400	400	
Dimension B [mm]	182	182	198	182	198	198	198	198	216	230	230	
Dimension H [mm]	181	181	181	181	181	181	181	181	181	130	130	
Weight (PP/PVDF approx.) [kg]	7.8	7.8	8.8	7.8	8.8	8.8	9.0	9.0	11.5	14.5	15.0	
Voltage**	230 V ac or 230/400 V three-phase current											
Protection class	hose-proof according to IP 55											
Ports	suction side G 2						discharge side G 1 1/2					
Recommended maximum flow rate	suction side 1 m/s						discharge side 3 m/s					
Material	PP				PVDF				stainless steel			
Maximum temperature	80 °C				95 °C				100 °C			
Maximum system pressure at 20 °C	2.5 bar				3.5 bar				8.0 bar			

* To deliver liquids with a higher relative density, we also offer all our pumps with smaller impeller diameters which, however, reduce delivery rates and heads of the pumps.

**Other voltages available upon request.



STANDARD DESIGN:

Housing, impeller and impeller magnet coating are made of glass-fibre reinforced PP plastic or PVDF or stainless steel. Sleeve bearings, starting rings and centering shaft are made of 99.7 % pure oxide ceramic, and the O-ring sealing of the housing is made of either FKM or EPDM. (See table on page 7 for other materials.)

Position of the terminal box: standard position is on top (if you need it mounted on the right or the left, please indicate when placing your order).

Position of the discharge port: vertical position is standard (differing positions at 12 x 30° are possible, please indicate when placing your order).