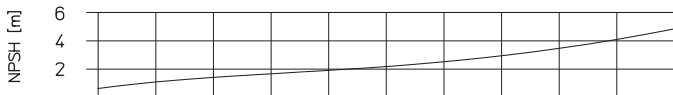
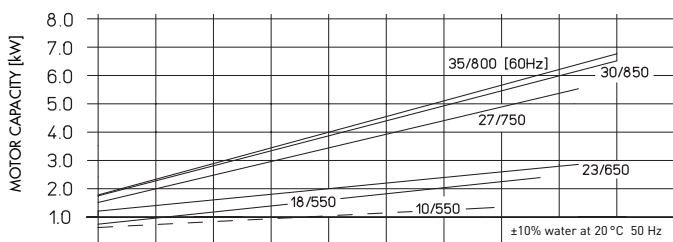
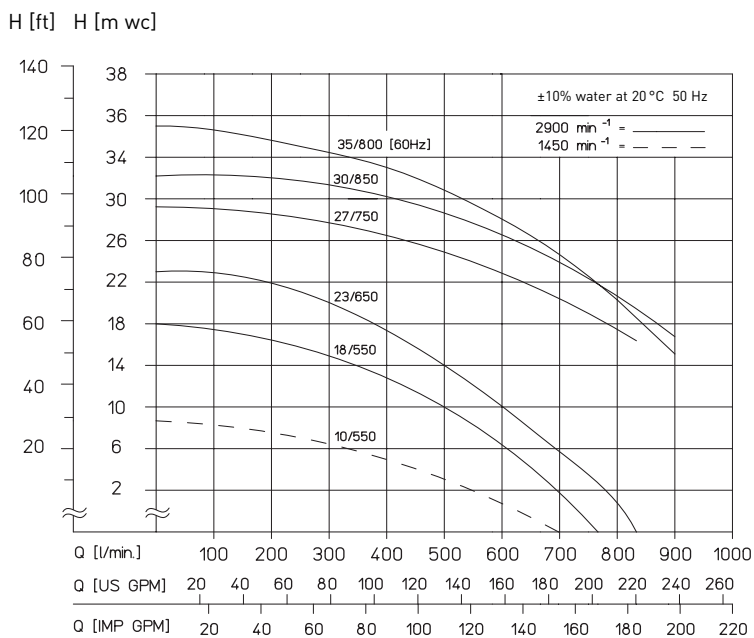




- Delivery rate up to 900 l/min
- Delivery head up to 35 m wc
- No shaft seal required
- For aggressive and neutral liquids
- Made of PP or PVDF
- Protection class IP 55

Magnetically coupled centrifugal pumps of type 4.5 are non-self-priming pumps that operate in horizontal position and are made in monobloc design. A magnetic coupling connects the pump to the motor and transmits the power of the motor to the impeller.

PERFORMANCE CHARTS:



STANDARD DESIGN:

Housing, impeller and impeller magnet coating are made of glass-fibre reinforced PP plastic or PVDF. Sleeve bearings, starting rings and centering shaft are made of 99.7% pure oxide ceramic, and the O-ring sealing of the housing is made of either FKM or EPDM. (See table on page 7 for other materials.)

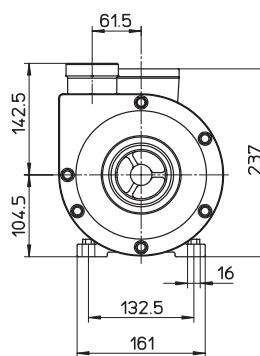
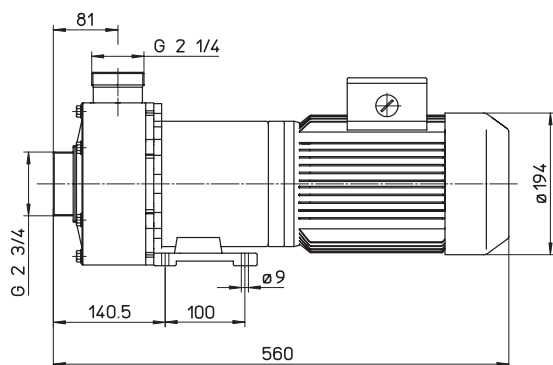


TECHNICAL DATA

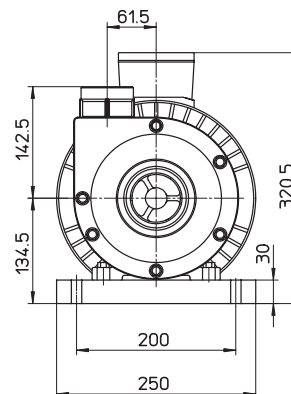
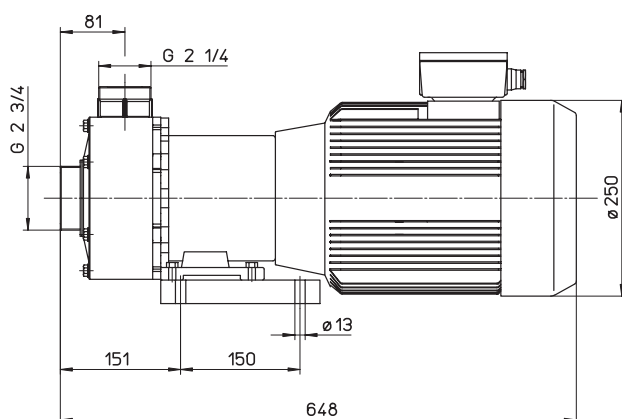
Size	10/550	18/550		23/650	27/750	30/850	35/800
Maximum delivery rate [l/min]	700	750		833	833	900	900
Maximum delivery head [m wc]	9.0	18.0		22.0	28.0	32	35
Maximum density [g/cm ³]*	1.6	1.35	1.8	1.45	1.0	1.15	1.0
Motor capacity P2 at 50 Hz [kW]	2.2	3.0	4.0	4.0	5.5	7.5	–
Motor capacity P2 at 60 Hz [kW]	2.64	3.6	4.8	4.8	6.6	9.0	6.6
Current rating (400 V) [A]	4.9	6.25	8.1	8.1	11.0	14.5	13.8
Rated speed at 50 Hz [min ⁻¹]	1450	2900		2900	2900	2900	–
Rated speed at 60 Hz [min ⁻¹]	1750	3440		3440	3440	3440	3440
Weight [kg]	28.0	34.0	36.0	37.0	47.0	57.0	48.5
Voltage**	230/400 V three-phase current						
Protection class	hose-proof according to IP 55						
Ports	suction side G 2 3/4			discharge side G 2 1/4			
Recommended maximum flow rate	suction side 1 m/s			discharge side 3 m/s			
Material	PP			PVDF			
Maximum temperature	80 °C			95 °C			
Maximum system pressure at 20 °C	5.0 bar			6.0 bar			

* To deliver liquids with a higher relative density, we also offer all our pumps with smaller impeller diameters which, however, reduce delivery rates and heads of the pumps.

**Other voltages available upon request.



standard motor
up to 4.0 kW



standard motor
up to 7.5 kW

Position of the terminal box: standard position is on top (if you need it mounted on the right or the left, please indicate when placing your order).

Position of the discharge port: vertical position is standard (differing positions at 12 x 30° are possible, please indicate when placing your order).