

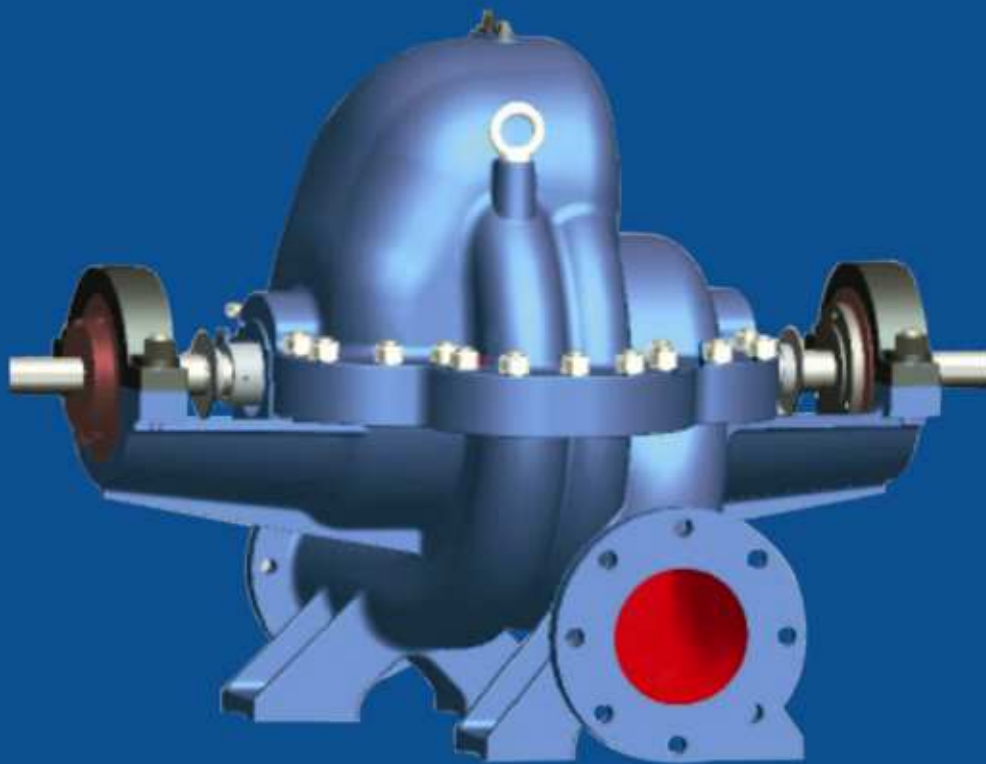
iHT Series
SPLIT CASE PUMPS

Your Necessity, Our Innovation



Enriching Lives

KIRLOSKAR BROTHERS LIMITED



Energy Efficient | Dual Drive | Compact Design | Leakage Proof | Low Downtime



Single stage



Two stage pump

Innovative- iHT series Horizontally Split Casing Pump

Kirloskar Brothers Limited (KBL) is the world leader in manufacturing horizontal split case pumps. Over the years we have taken feedback from our customers and understood their needs and converted them into an innovative design. i-HT is a 2900 rpm horizontal axially split casing, centrifugal pump with new features from the house of Kirloskar Brothers Ltd.

i-HT is available in single and double stage construction backed up with maintenance friendly design and with optimum efficiencies. This new generation split case pump is designed for externally removable type bearing housing, DIN cavity mechanical seal, Impeller nut and sleeve arrangement, Easy wear ring fitment and lot of superior maintenance friendly features apart from operational advantages like dual drive.

Pump Details

Delivery Sizes	: Upto 300 mm
Discharge	: 30-1300 m ³ /hr
Head	: 30 to 250 Mtr.
Speed	: 2900 rpm
St. Box	: M. Seal for Single stage. M.Seal /Pack for double stage.
Flanges	: As per BS 4504 PN16
Liquid temp	: 8.0 - 90 C



Application

- Suitable for Fire fighting
- Primary & secondary HVAC application
- High pressure boosting system
- Mines Dewatering
- Cooling tower
- Recirculation
- Industrial utility water application
- Desalination
- Water supply
- Paper plant
- Steel plant for high pressure injection
- Sugar plant

Constructional Features

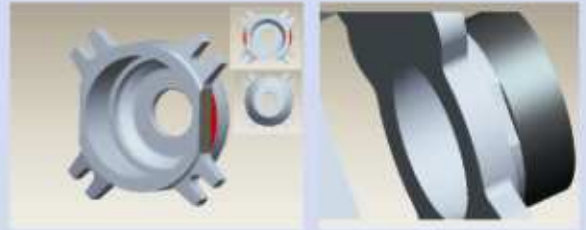
iHT pumps are horizontally split casing single/double stage centrifugal pumps. All single stage pumps provided with double suction type impeller and fitted with DIN 24960 cavity mechanical seal. The impeller is centrally placed on a sturdy designed shaft and the entire rotating assembly is dynamically balanced to provide a smooth trouble free longer and efficient operation.

Special Features

Easy bearing removal

Provision for pull- bearing housing and bearing

- No need to remove upper half casing
- No need to take rotating unit out
- Use the puller to remove the housing
- Use the puller and remove the bearing
- Saves 2-3 assembly hours and down time



Simplicity in replacement of wear ring in the pump



Top view lower half casing
(conventional way)



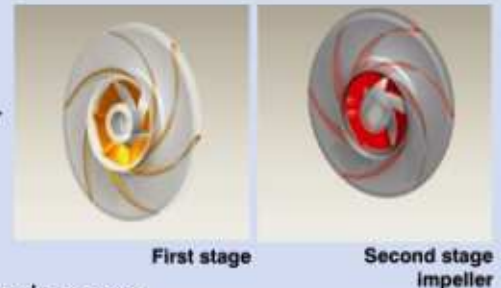
Top view lower half casing
(Innovative way)

User Benefits:

- Easy assembly and dismantling due visualization
- No skill required for casing ring fitment
- Reduction in down time

Mistake proof assembly of two stage impeller

- First stage & second stage impeller fitting dimensions differ
- Mistake of interchangeability is totally eliminated in assembly
- No skill or hydraulic expertise required at assembly due to pokayoke
- This will reduce 10-12 hrs of rework time in case any mistake happens



Better heat dissipation, lesser grease refill



- UHMWPE plastic material is used in iHT series pumps
- It is light weight and excellent resistance to any corrosion due to weather condition
- Good in heat dissipation resulting in maintaining lower temp in bearing housing
- Reduces the frequency of grease refill

Dual drive two stage pump

- Two stage pump in this series will be supplied with dual drive
- Pump can be rotated CW or CCW as per the demand at site without any modification /change at site
- Same pump can be connected to motor and engine at a time by clutch arrangement
- Stand by pump can be eliminated



